

# GIVING YOUR SMILE A SECOND CHANCE

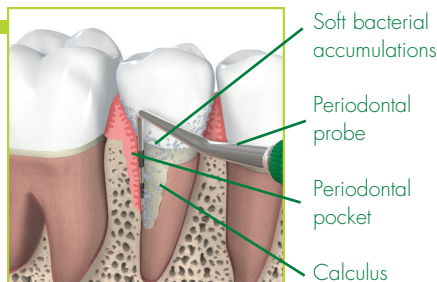
## DENTAL TISSUE REGENERATION WITH STRAUMANN® EMDOGAIN

### THE PROBLEM . . . *Loss of Dental Tissue*

Bacteria collect between the teeth and gums, causing plaque to form. When plaque is not removed with regular brushing and flossing, gums can become reddened, swollen, and may bleed. Inflamed gums can destroy the fibers that anchor your teeth to the jaw bone, causing bone loss. Healthy fibers and bone are necessary to preserving your teeth.



Advanced periodontal disease with loss of tooth support resulting in the formation of a deep periodontal pocket.

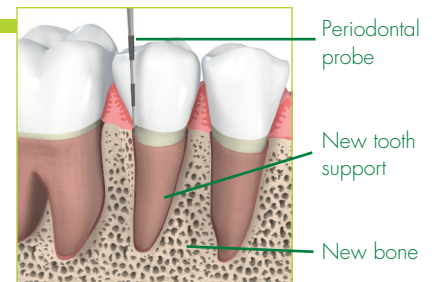


### THE SOLUTION . . . *Straumann® Emdogain*

Emdogain utilizes an animal protein (porcine) to help regenerate the fibers that are responsible for tooth attachment. Emdogain helps promote the reformation of tooth attachment fibers upon application of Emdogain, and can continue to spur development of new fibers for up to one year. Emdogain mimics your body's natural generation process of tooth attachment fibers. Scientifically documented and researched, over 1 million patients worldwide use Emdogain to treat loss of dental tissue.



Lost tooth support has been regained following treatment with Emdogain.



### AFTER YOUR SURGERY

#### WEEK 1

- Do not brush the treated area
- Avoid hard foods and crispy foods
- Rinse with antiseptic mouthwash as instructed by your dentist

#### WEEKS 2-6

- Removal of stitches
- Continue to rinse with the antiseptic mouthwash
- About six weeks after the surgery, you can start brushing the teeth in the treated area carefully but only on the inside and outside, not in the spaces between the teeth
- Continue to follow your dentist's specific instructions concerning the use of dental floss between the teeth in the treated area

#### MONTHS 2-12

Arrange further visits to your dentist to monitor the healing process and for professional oral hygiene maintenance

#### MONTH 12

Visit your dentist for x-rays and oral hygiene maintenance

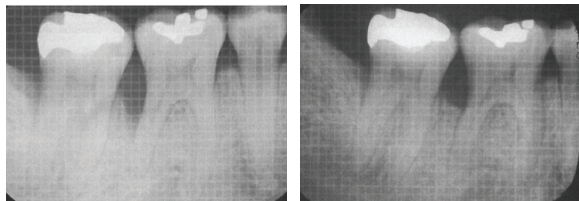
*The information in these pages is intended to provide some basic information on the topic of dental health. Your dental professional will provide specific instructions about your dental care following surgery.*

# STRAUMANN® EMDOGAIN

## CAN HELP ACHIEVE EXCELLENT RESULTS

### INTRABONY DEFECTS

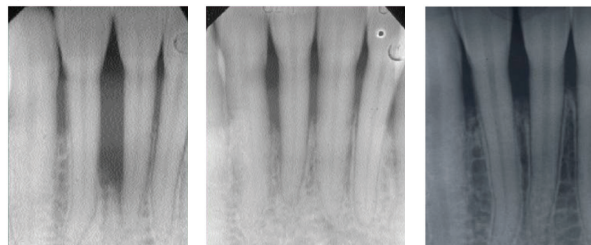
By kind permission of Froum SJ et al. J Periodontol 2001



Before treatment

12 months

By kind permission of Dr. Gunnar Heden, Karlstad, Sweden



Before treatment 5 years

8 years

### RECESSION DEFECTS

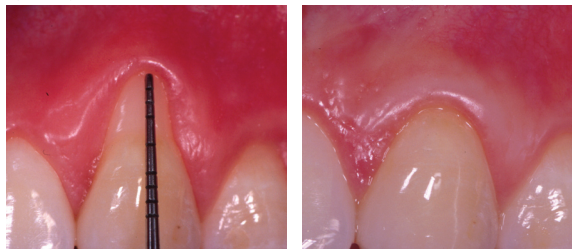
By kind permission of Nunn M.J. Periodontol 2003



Before treatment

12 months

By kind permission of Prof G. Zuchelli, Bologna, Italy

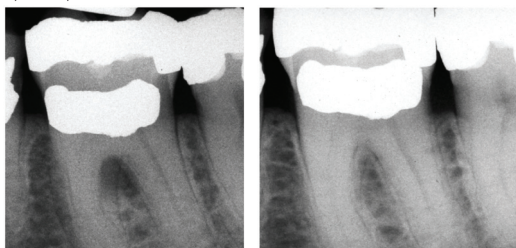


Before treatment

8 months

### CLASS 2 FURCATION DEFECTS

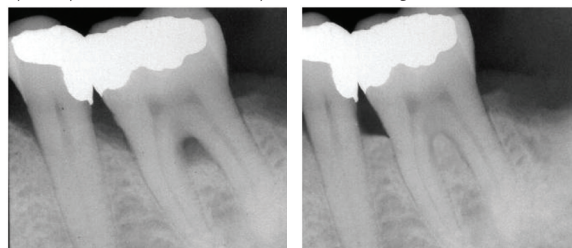
By kind permission of Dr. Gunnar Heden Karlstad, Sweden



Before treatment

12 months

By kind permission of Dr. Anthony Polimeni, Huntington, NY



Before treatment

15 months

#### Contraindications

Straumann Emdogain should not be used in patients with disorders or conditions including, but not limited to the following: uncontrolled diabetes or other uncontrolled systemic diseases, disorders or treatments that compromise wound healing, chronic high dose steroid therapy, bone metabolic diseases, radiation or other immunosuppressive therapy and infections or vascular impairment at the surgical site.

**GREATER PHOENIX**  
Periodontics & Implants

CHAD M CRAVATTA DMD, MS

2220 west southern avenue • suite 101 • mesa, az 85202

(480) 834.6005 • (800) 404.6921

www.greaterphoenixpi.com