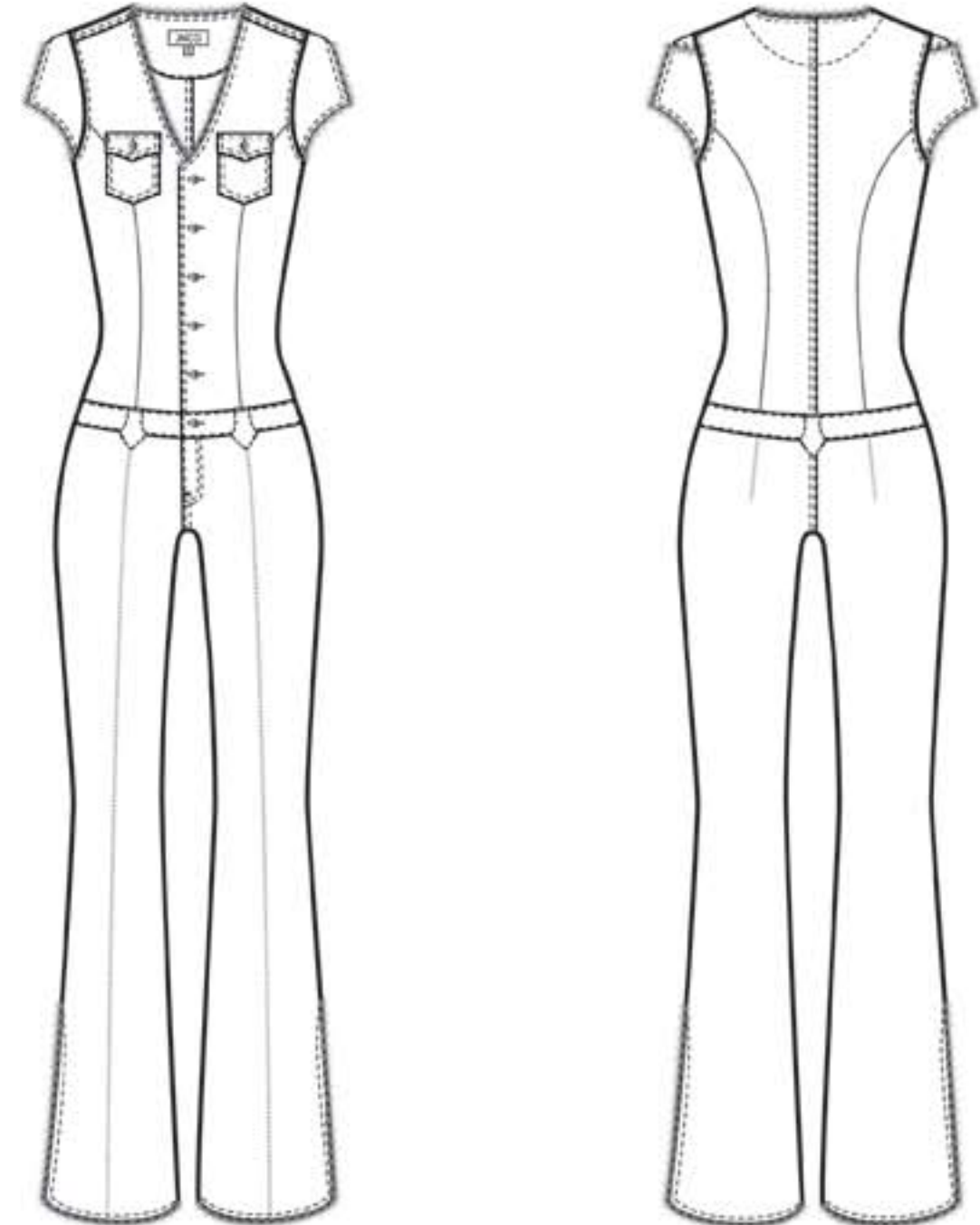
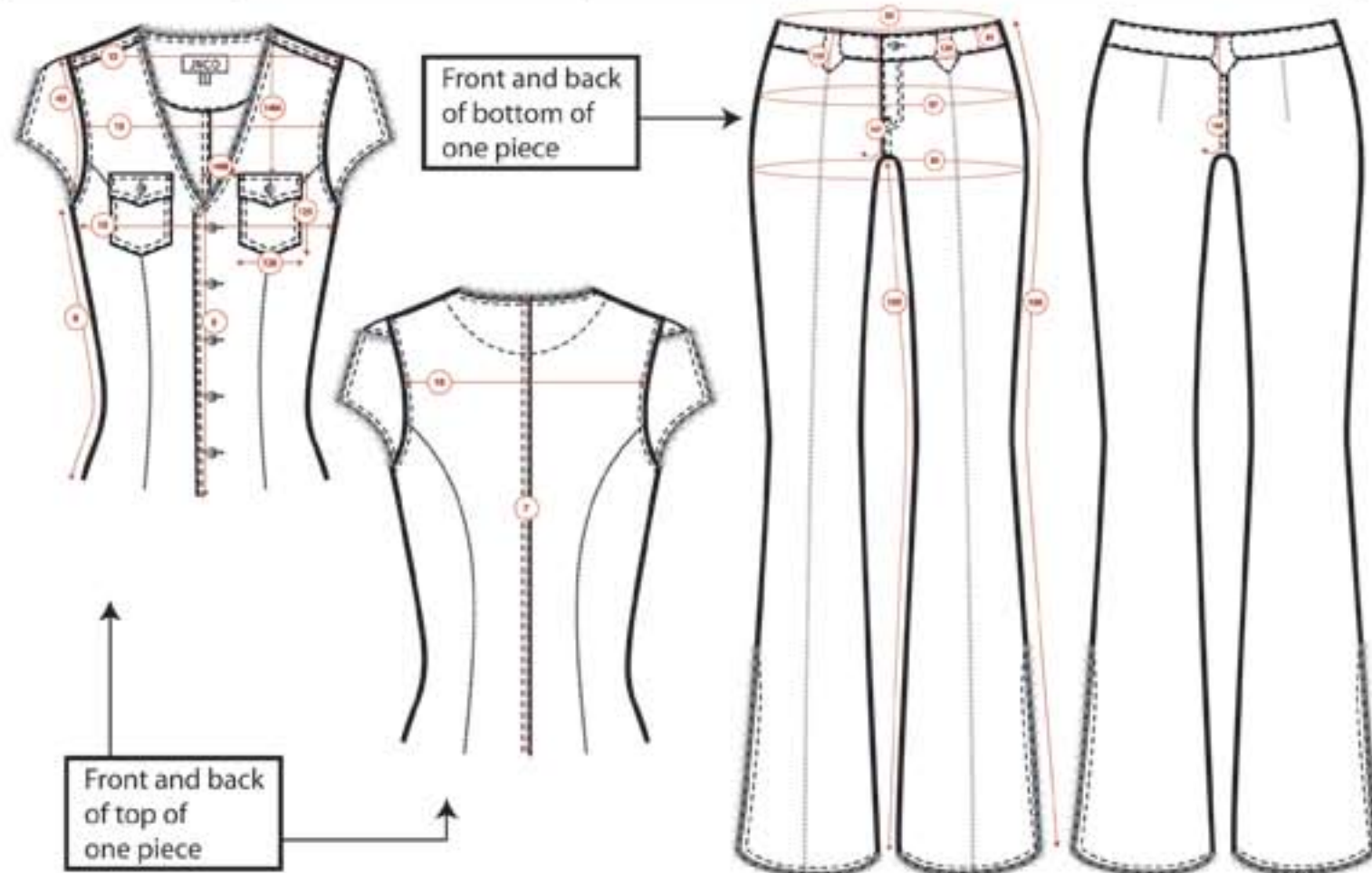


COMPANY NAME	JNCO	BLOCK OR REF STYLE: none	
SEASON	Spring	Description	One piece denim catsuit, chest patch pockets, tulip cap
STYLE NAME	Denim Catsuit	sleeves, pintucked princes seams, pintucked legs, princes seams, pintucked	
STYLE NUMBER	spwdc05892	blanace line on front leg, raw edges on neckline, sleeve and side leg vents.	
DIVISION	Women's Casual	FABRIC	100% cotton denim

COMPANY NAME	JNCO	BLOCK OR REF STYLE: none	
SEASON	Spring	Description	One piece denim catsuit, chest patch pockets, tulip cap
STYLE NAME	Denim Catsuit	sleeves, pintucked princes seams, pintucked legs, princes seams, pintucked	
STYLE NUMBER	spwdc05892	blanace line on front leg, raw edges on neckline, sleeve and side leg vents.	
DIVISION	Women's Casual	FABRIC	100% cotton denim



CODE	MEASURE NAME	MEASUREMENT	TOLERANCE
5.	FRONT BODICE LENGTH	17 5/8	3/8
6.	CENTER FRONT BODICE LENGTH	9 7/8	3/8
7.	CENTER BACK BODICE LENGTH	28 3/8	3/8
8.	SIDE SEAM BODICE LENGTH	11 3/8	3/8
10.	CHEST WIDTH CIRCUMFERENCE	33	1/2-3/4
13.	ACROSS SHOULDER	14 1/4	1/4
15.	ACROSS CHEST	10 3/4	1/4
16.	ACROSS BACK	13 1/4	1/4
43.	CURVED ARMHOLE WIDTH CIRCUMFERENCE	8 3/8	3/8
81.	WAISTBAND DEPTH	1 5/8	1/8
83.	WAISTBAND CIRCUMFERENCE	32 5/8	1/2-3/4
87.	HIGH HIP WIDTH CIRCUMFERENCE	37	1/2-3/4
89.	LOW HIP WIDTH CIRCUMFERENCE	27	
105.	INSEAM	31 1/2	3/8

CODE	MEASURE NAME	MEASUREMENT	TOLERANCE
106.	OUTSEAM	36 3/8	3/8
107.	FRONT RISE	7 3/4	3/8
108.	BACK RISE	12 1/2	3/8
125.	APPLIED POCKET HEIGHT WITH FLAP	4	1/8
126.	APPLIED POCKET WIDTH WITH FLAP	3 1/4	1/8
129.	BELT LOOP WIDTH	1 1/8	1/8
130.	BELT LOOP HEIGHT	1 3/4	1/8
148A.	TOP POCKET VERTICAL	8 1/2	1/8
148B.	TOP POCKET HORIZONTAL	2 1/2	1/8
151A.	FRONT TORSO LENGTH	17 1/8	1/2
152A.	BACK TORSO LENGTH	30	1/2
153.	TOTAL GARMENT LENGTH FRONT	53 1/8	3/4
154.	TOTAL GARMENT LENGTH BACK	55	3/4

	PRODUCT NUMBER	NAME	COLOR	PLACEMENT
SHELL	den3546f	denim	acid wash	entire garment
LABEL 1	lab1654t	logo label	black	CB neck
LABEL 2	lab9872v	sizd label	black	attached to center bott of logo label
BUTTON	btn321989	metal shank	nickel	CF placket, center top of pocket