

COAST NEWS



YOUR COMMUNITY IN YOUR HANDS

AVILA BEACH • SHELL BEACH • PISMO BEACH • GROVER BEACH • ARROYO GRANDE • HALCYON • OCEANO

Western monarch butterflies can still be seen fluttering in the eucalyptus trees at the Pismo State Beach Monarch Butterfly Grove located on Highway 1. The butterflies flock to the Central Coast each year seeking shelter from the freezing northern winters. Typically the butterflies start their migration to their summer sites in the Sierras, Florida, Canada and the Great Lakes Region in North America in early March.
Photo by Christopher Gardner



Bigger Is Better

By Theresa-Marie Wilson

Revised plans for a large-scale hotel project at West Grand Avenue and Highway 1 were unanimously approved by the Grover Beach Planning Commission last week.

Initial designs proposed for the Grover Beach Lodge and Conference Center included a 150-room full-service hotel, 7,476 square feet of indoor conference space with an additional 3,500 square feet of outdoor “flex” space, a full-service restaurant and bar, a second story pool and patio on the 13-acre site.

The revised plan follows a recommendation by the Planning Commission in 2011 that the City Council approve the project but consider expanding the size of the conference center by 20 to 50 percent in order to provide more substantial

See *Bigger*, page 27

AG Puts a Hold on State Water Purchase

By Theresa-Marie Wilson

Citing high costs and a desire to analyze alternative options, the Arroyo Grande City Council put a hold on the proposed June ballot measure which would ask voters to authorize the city to purchase state water.

The council voted 4-1 to meet in June to evaluate cost comparisons between multiple sources of water, how much water is required for future development and whether or not to place the measure on the November ballot. Tim Brown dissented.

“I do believe that in the end, at least for our purposes, state water will prove to be the most effective,” council member Jim Guthrie said.

See *Water*, page 27

Doubts Cast on Adequacy of Diablo Seismic Studies

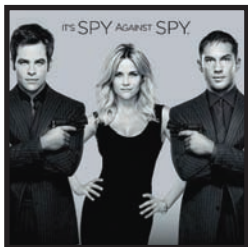
By Jack Beardwood

A pair of highly credible witnesses has testified that Pacific Gas & Electric’s studies of possible earthquake hazards near the Diablo Canyon Nuclear Power Plant are inadequate.

Testimony from Dr. Douglas Hamilton, who was part of PG&E’s Diablo Canyon geosciences team from 1971 to 1998, and State Sen. Sam Blakeslee, who is a Ph.D. with several years of experience in the field of seismology, has been delivered by Alliance for Nuclear Responsibility to the California Public Utilities Commission (CPUC) for a hearing to review the utility’s

See *Diablo*, page 28

INSIDE INFORMATION



This Means War is a great date movie page 11



Young at Heart page 13



Eagles Tackle CIF page 22



Doo-Wop Comes to the Clark page 30