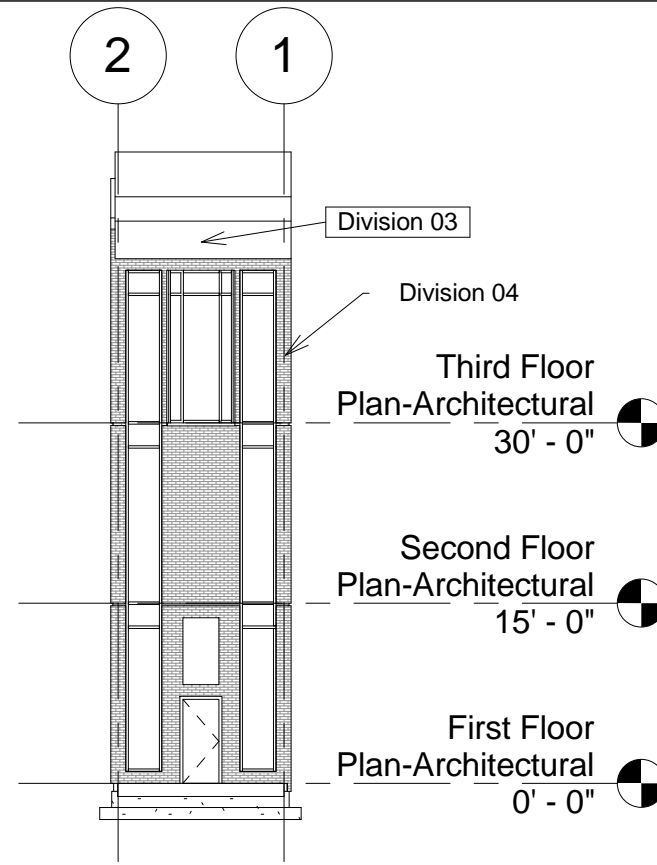
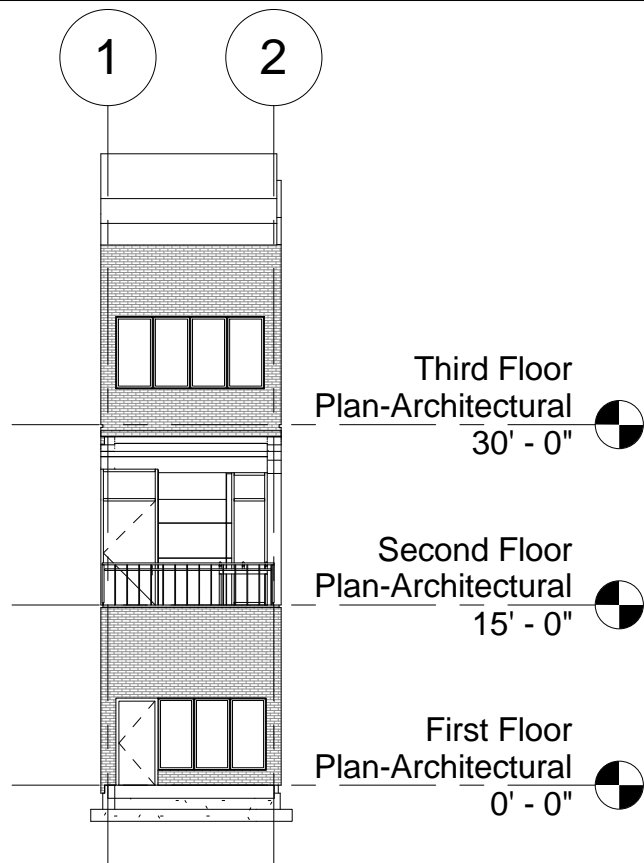


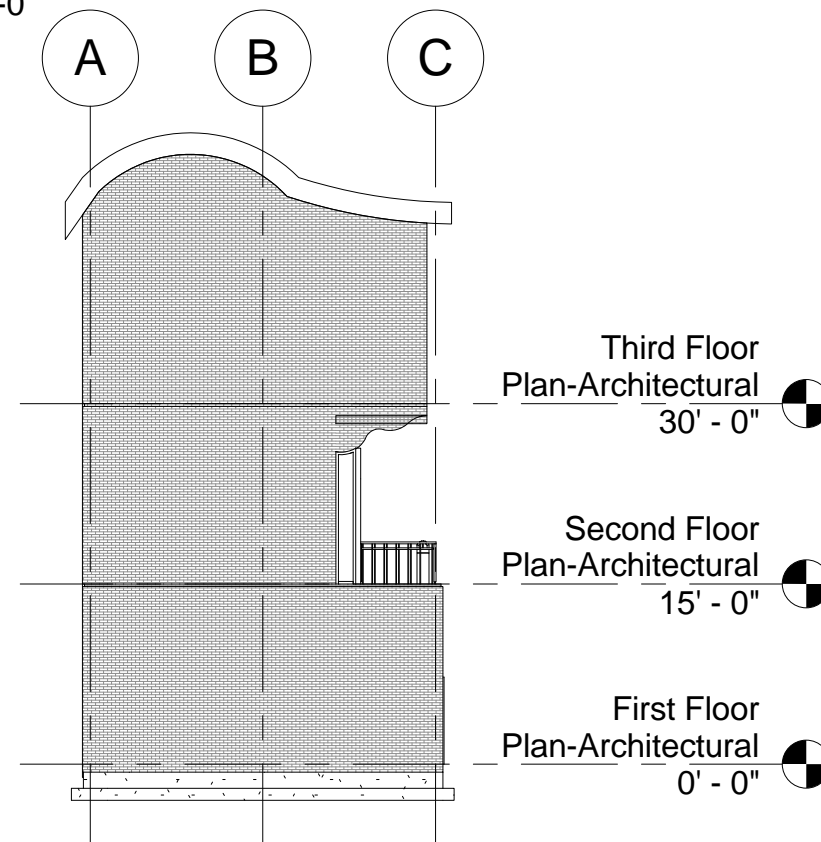
① East
1/16" = 1'-0"



② North
1/16" = 1'-0"



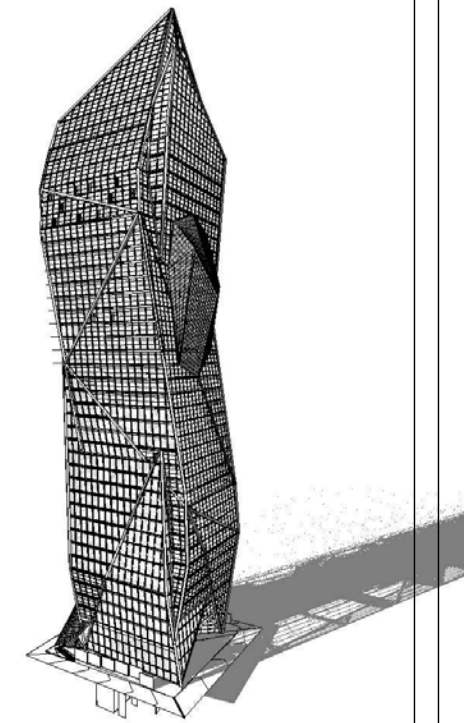
③ South
1/16" = 1'-0"



④ West
1/16" = 1'-0"

Keynote Legend 1	
Key Value	Keynote Text
Division 03	Concrete
Division 04	Masonry

University of Oregon



Row House

Building Elevations

Project Number 001

Date June 9, 2011

Drawn By Author

Checked By PQR

Sara Ruzomberka

Scale A104
1/16" = 1'-0"