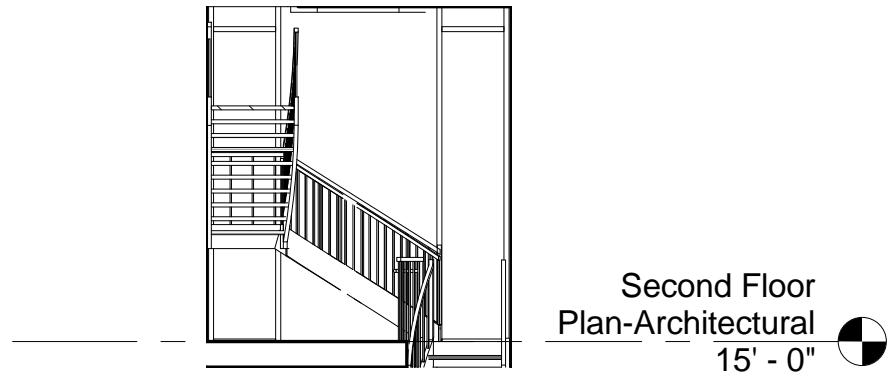
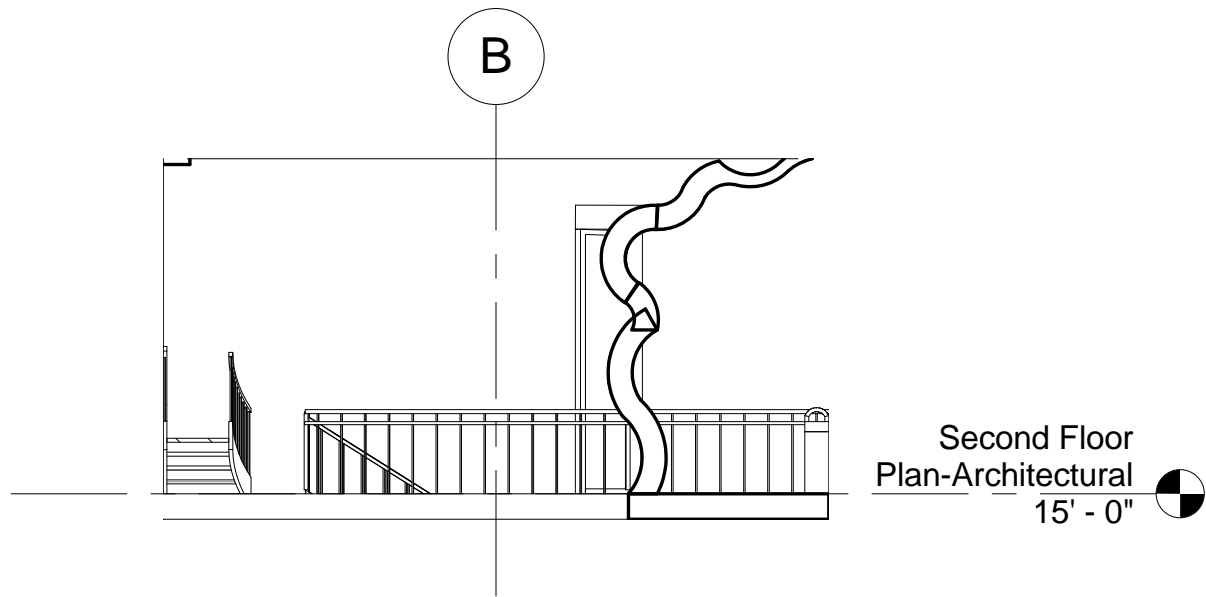


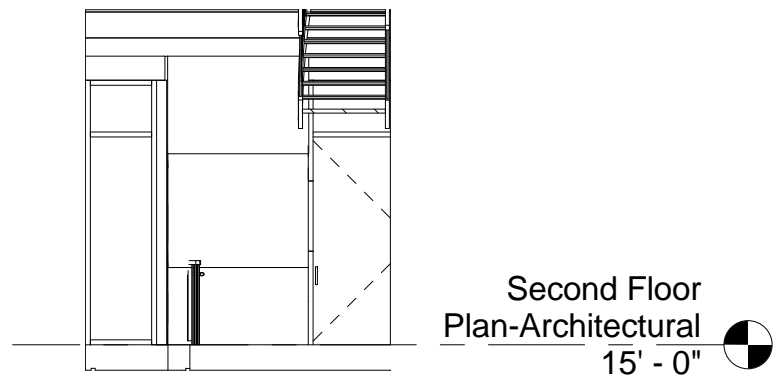
1 A
1/8" = 1'-0"



2 B
1/8" = 1'-0"

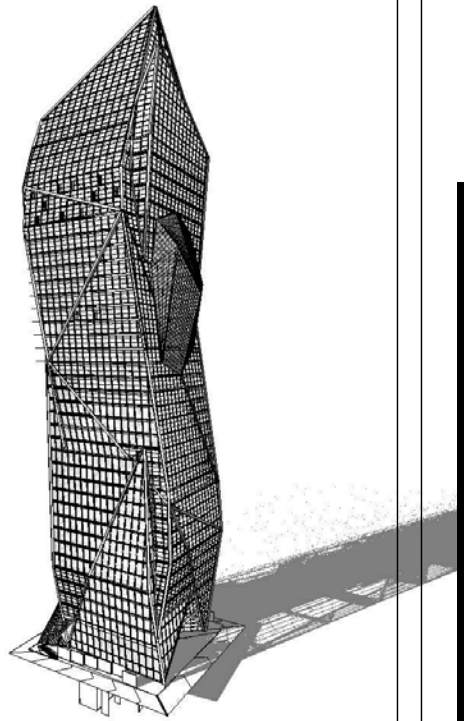


3 C
1/8" = 1'-0"



4 D
1/8" = 1'-0"

University of Oregon



Row House

Interior Elevations

Project Number 001

Date June 9, 2011

Drawn By SLR

Checked By Checker

Designer

A106

Scale 1/8" = 1'-0"