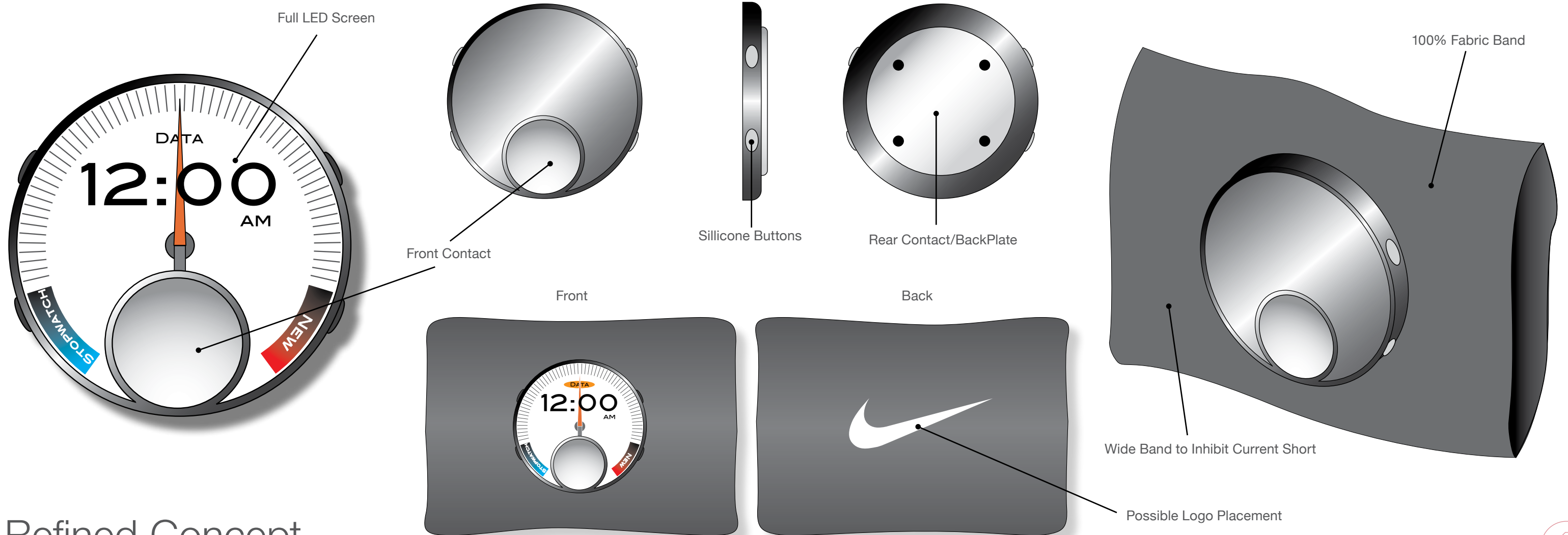
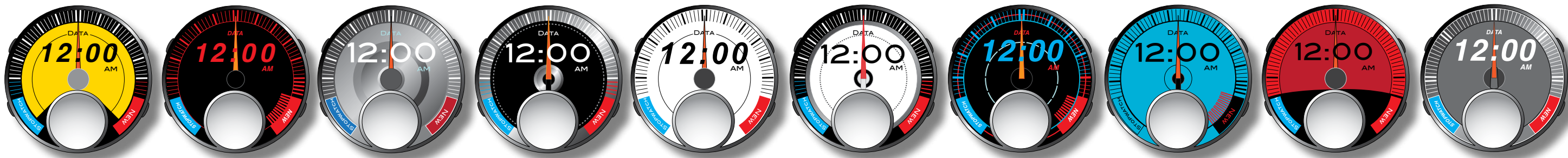
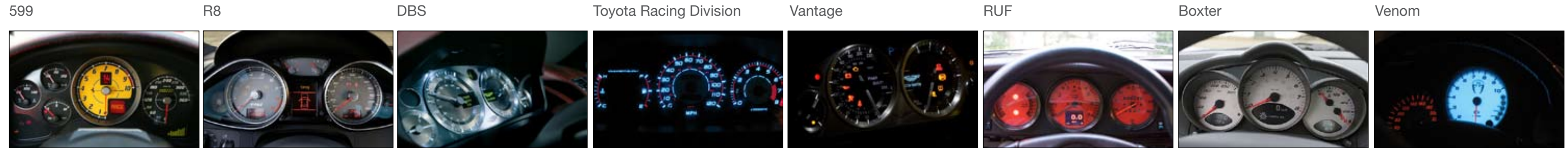


Phase 2 Concept Development

The refined design concept was chosen off an automotive aesthetic. The face is a full LCD display and was modeled after a performance car gage. This style appears as if the user has a real-time gage to monitor their body's performance. After filtering through multiple gage samples, a final direction was chosen. The final concept features a wide, stretchable fabric band that is breathable and prevents the current from shorting.



Refined Concept

