

Observation Sketch of I-Beam Connection to Wall Framing

2 X 4 DOUBLE TOP PLATE

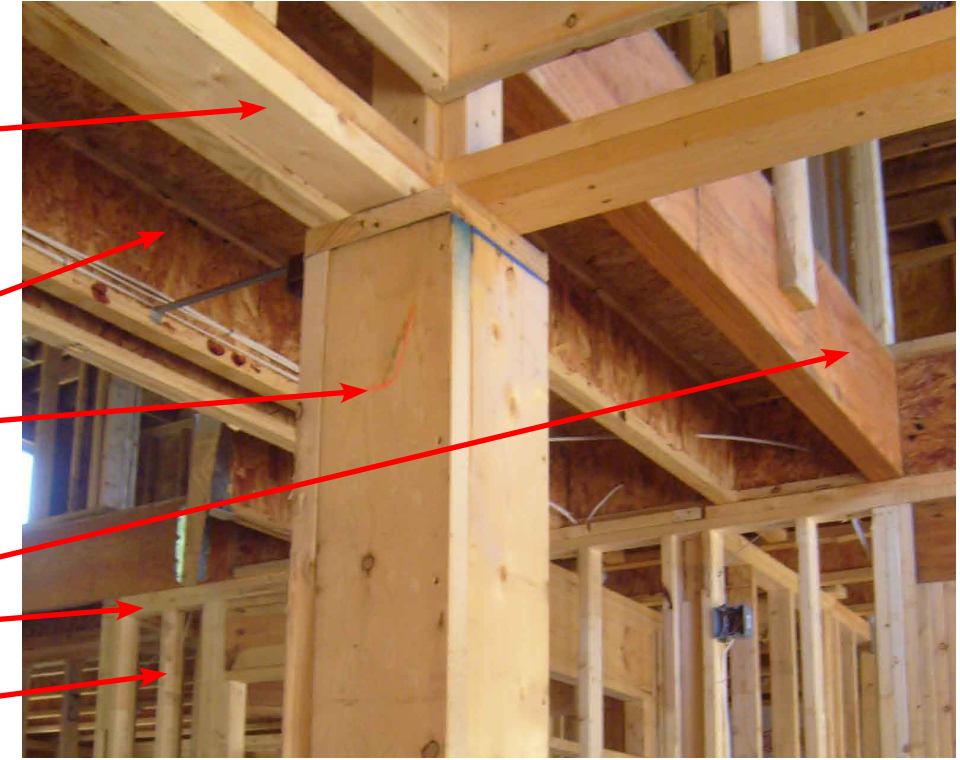
GEORGIA PACIFIC I-BEAMS

2 X 8'S FOR COLUMN POST

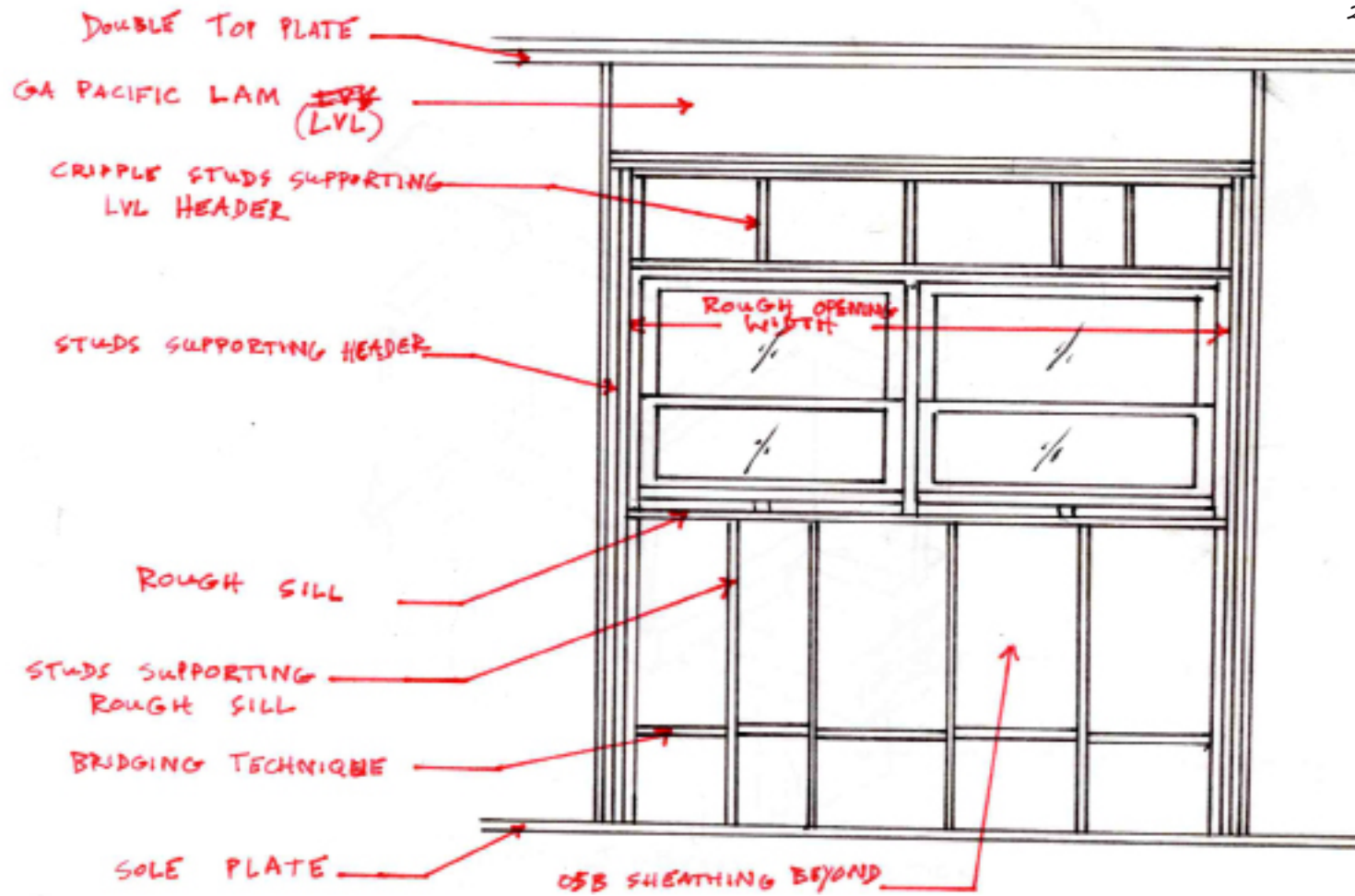
GEORGIA PACIFIC LAM LVL 1.5 E

2 X 4 DOUBLE TOP PLATE

2 X 4 WALL STUD FRAMING



Observation of Support systems for 2nd Floor



Documented Sketch of a Typical Window Framing System

2 X 10? CEILING JOISTS @ 16" OC

JOIST HANGERS

GEORGIA PACIFIC LAM LVL 1.5 E

JOIST HANGER

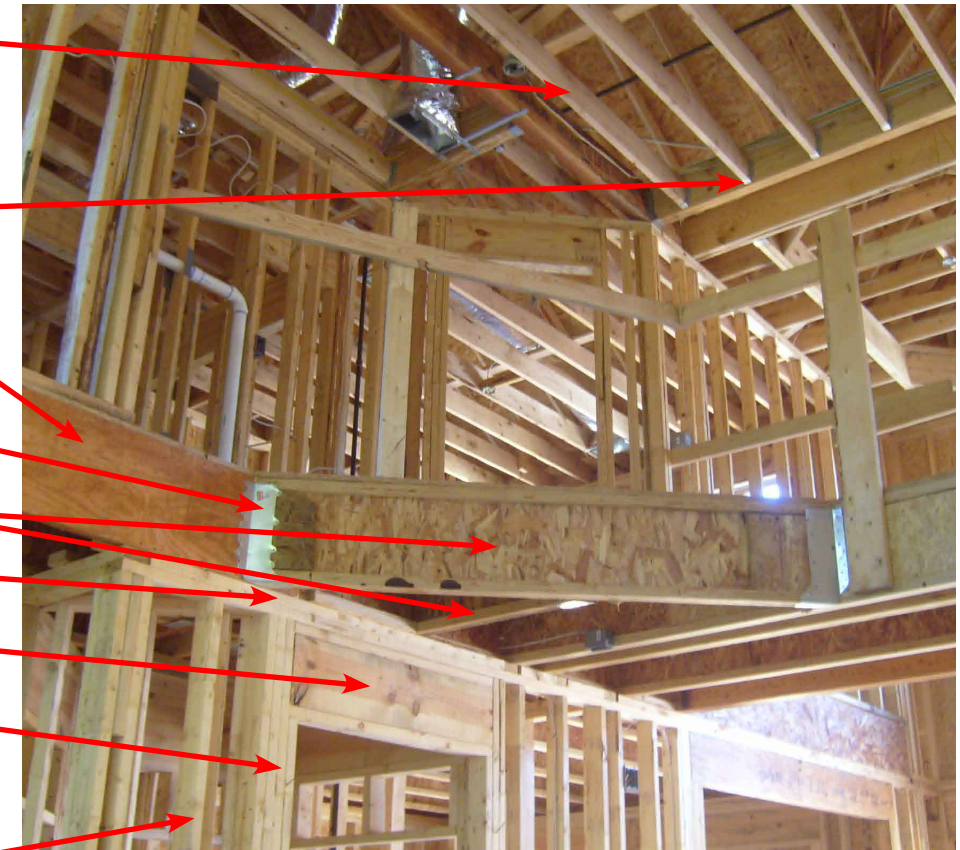
GEORGIA PACIFIC I-40 I-BEAMS

DOUBLE TOP PLATE

LVL USED AS DOOR HEAD FRAMING

DOUBLE MEMBERS AROUND DOOR FRAMING

2 X 4 WALL STUD FRAMING



Observation of Beam Condition supporting 2nd floor