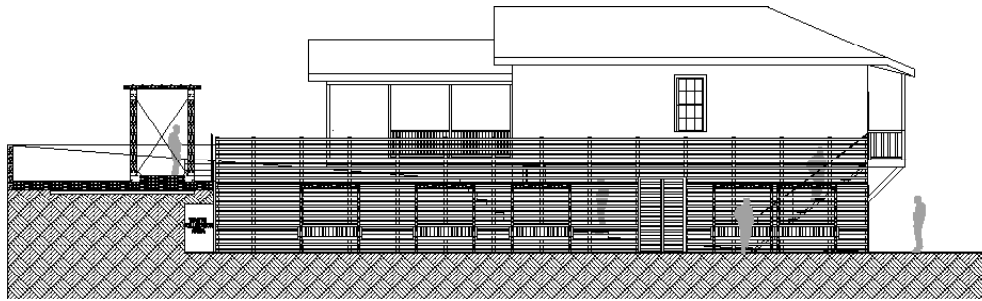


A)

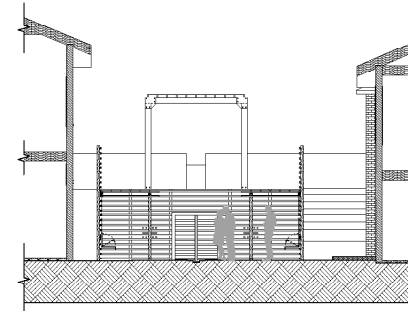


B)

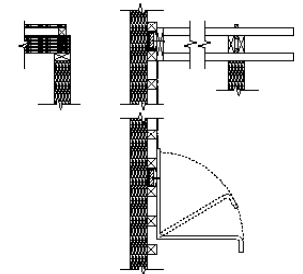
THIS PROJECT TOOK COURSE OVER A 2 WEEK PHASE. MY DESIGN FOCUSED ON INTEGRATION OF A LIGHT GAUGE WOOD SCREENING SYSTEM TO SHOW RELATIONSHIP BETWEEN PUBLIC VS PRIVATE SPACES & USAGE OF A MODULE SYSTEM WITHIN THE PUBLIC SPACE. I MADE THE MODULES OPERABLE AND MOVEABLE SO THAT PEOPLE COULD USE THE SPACE FOR A VARIETY OF DIFFERENT EVENTS SUCH AS A MARKET, A PERFORMANCE SPACE, AND SEATING. MY INITIAL THOUGHTS FOR THIS WERE THAT THE MODULES WOULD SLIDE ALONG A TRACK UNDERGROUND; FOR SIMPLICITY'S SAKE I DESIGNED A STEEL CHANNEL THAT THEY COULD SLIDE ALONG WITHIN THE LIGHT GAUGE WOOD SCREENING.



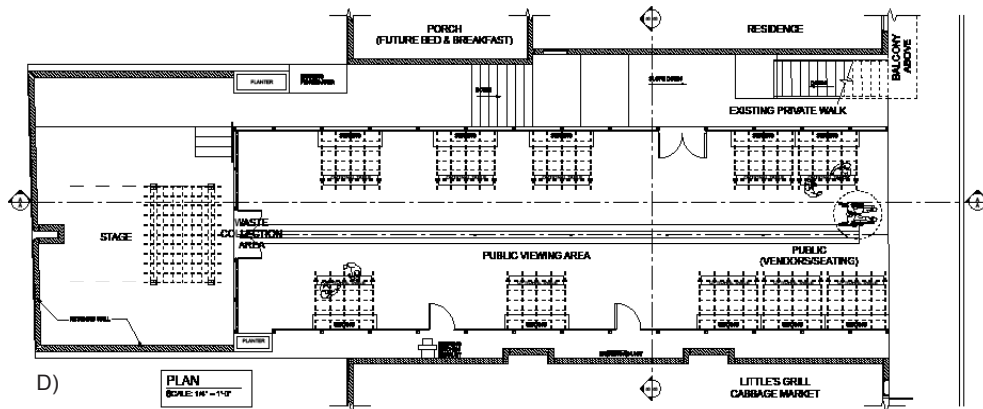
C)



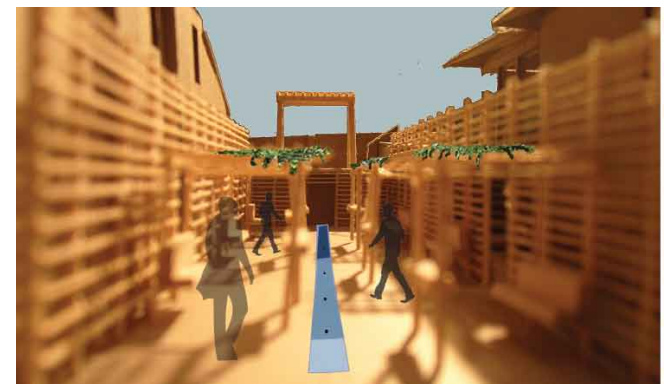
E)



F)



D)



G)