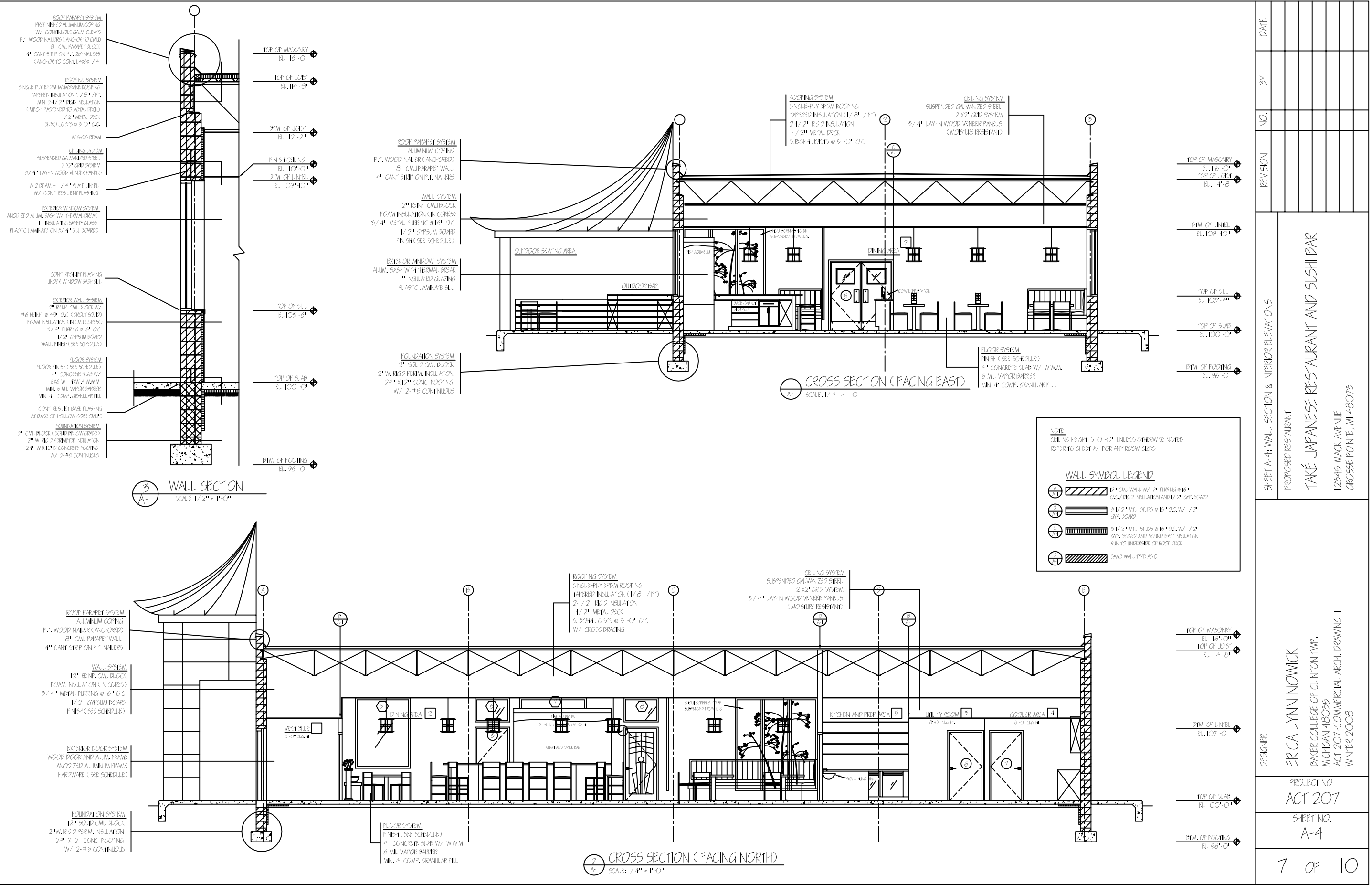


PRODUCED BY AN AUTODESK EDUCATIONAL PRODUCT

PRODUCED BY AN AUTODESK EDUCATIONAL PRODUCT



NO.	REVISION	BY	DATE

SHEET A-4: WALL SECTION & INTERIOR ELEVATIONS

PROPOSED RESTAURANT
TAKÉ JAPANESE RESTAURANT AND SUSHI BAR
12345 MACK AVENUE
GROSSE POINTE, MI 48075

DESIGNER:
ERICA LYNN NOWICKI
BAKER COLLEGE OF CLINTON TWP.
MICHIGAN 48075
ACT 207-COMMERCIAL ARCH. DRAWING II
WINTER 2008

PROJECT NO.
ACT 207

SHEET NO.
A-4

7 OF 10