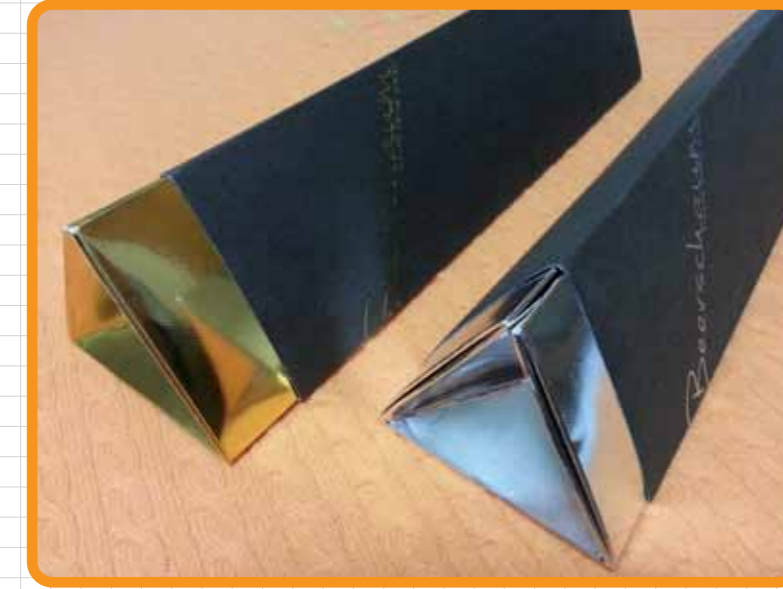


Enzyme Mother Project-beerschaum soap



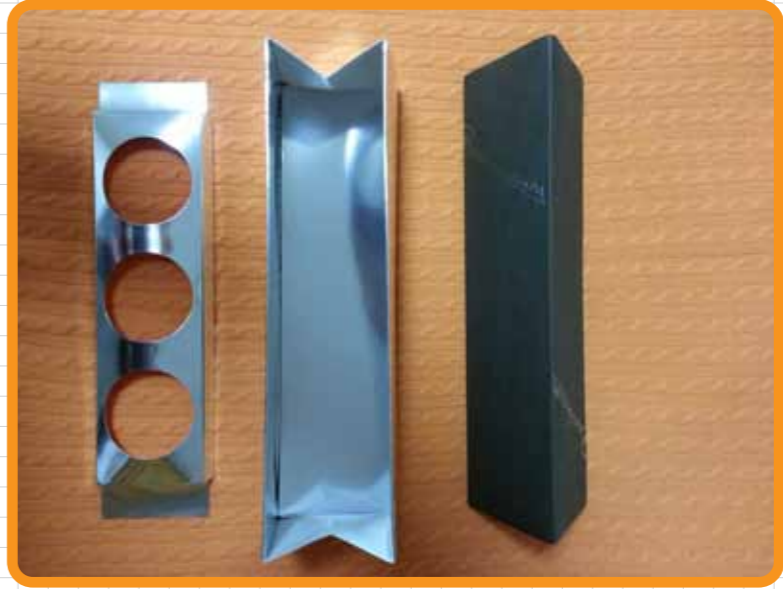
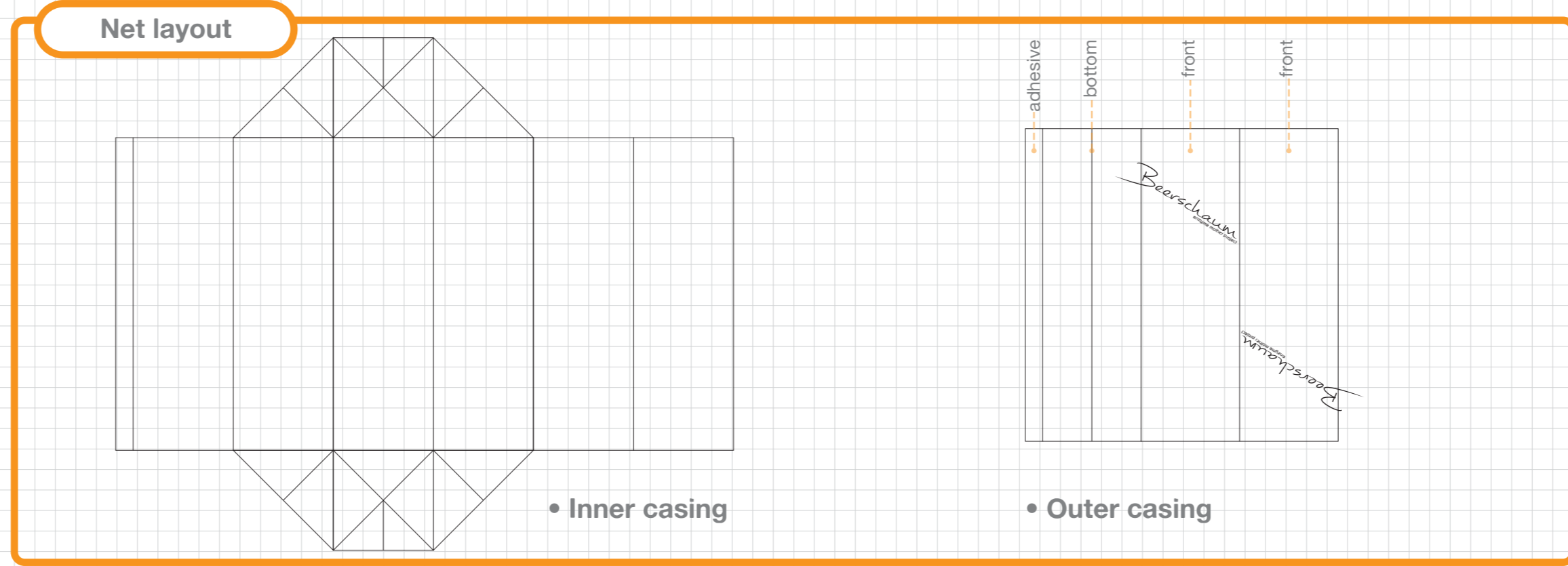
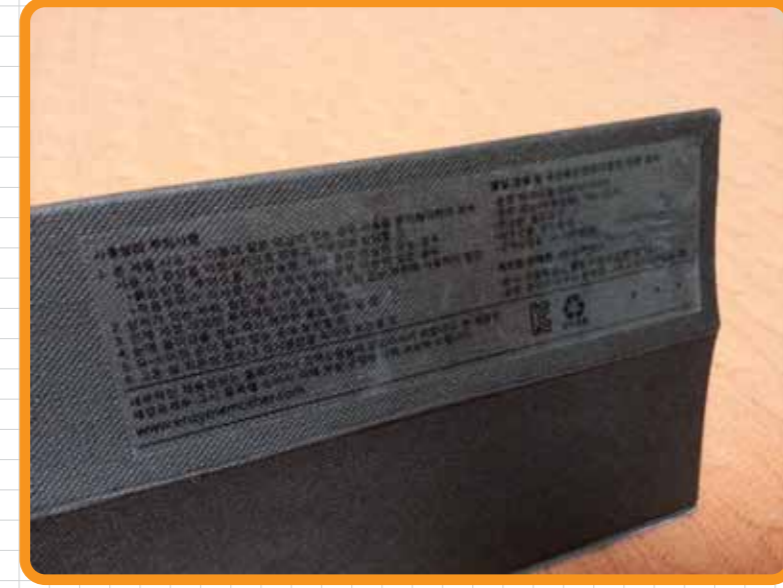
- **Final packaging.**
 - Distinct shades for two different product lines, a **low end Product (silver)** & **high end Product (gold)**.



- **Material & Texture.**
 - A smooth fabric-like material was used on the outer casing.
 - The outer casing is made of two layers each with different thickness (gsm), in order to strengthen the outer case.
 - The inner casing is made of a smooth material with a crocodile skin pattern impressed over the surface.
 - A reflective material was used to impress a high class and cosmetics related product image.



- **Material & Texture.**
 - The logo on each side has been impressed onto the surface, allowing the logo to stand out even more.
 - Information regarding Cuation of Use, quality & safety control and contact details are indicated on the bottom.



- **Packaging structure.**
 - Packaging consists of 3 parts; support base, inner casing, outer casing.
 - The 3 slots have been designed to have a tight fit so **that the products do not move around.**



- **Support base.**
 - The support base uses the exact same material and pattern as the inner casing.
 - The design can be modified with ease in the future if the composition of products change.

