

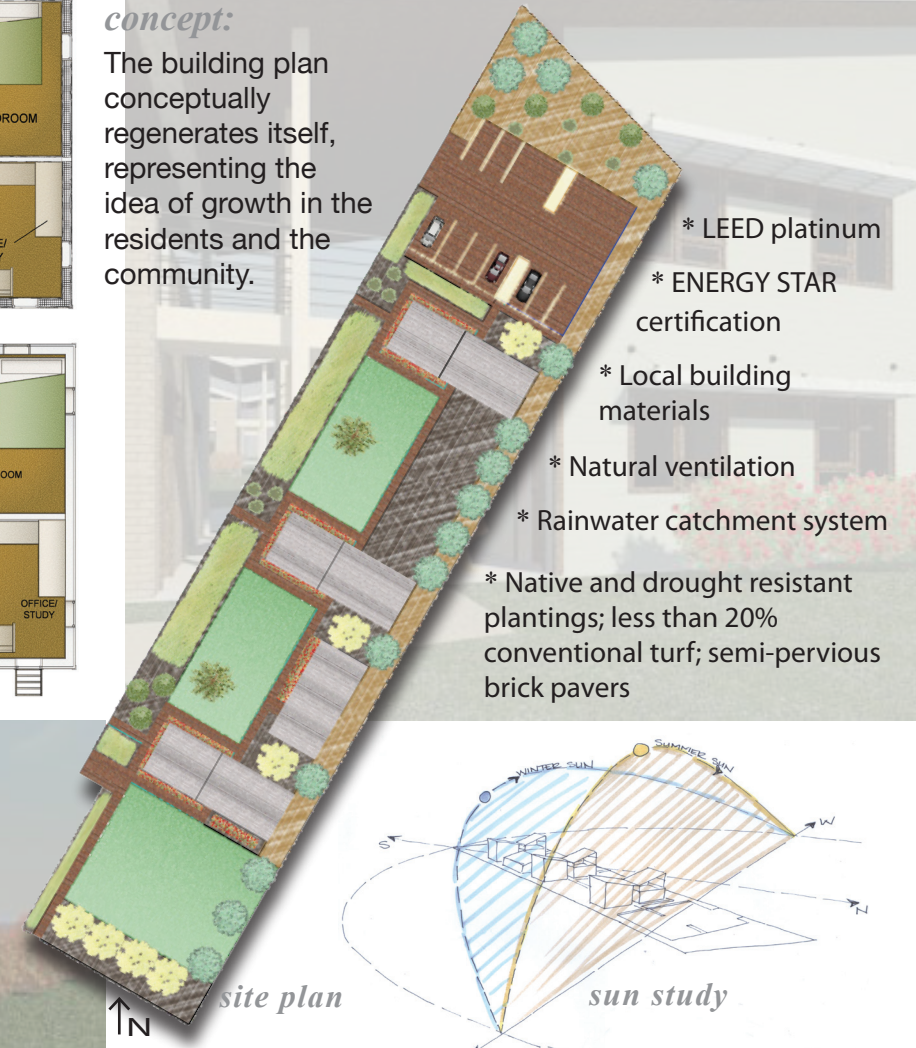
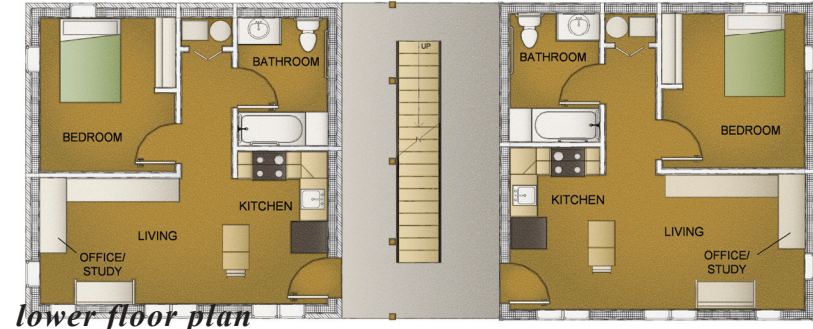
nc *sustainable design competition

*Placed 2nd at the Appalachian State competition;
advanced to the statewide competition in Raleigh, NC*

This multi-family unit will help its tenants who suffer from mental illness, developmental disabilities, and substance abuse to rebuild their lives. *Project competed in a multi-disciplinary team (responsibilities include: conceptual design, process sketching, interior space planning, landscaping plan (including plant specifications), renderings (digital and marker), graphics, documentation, interior material specifications)

concept:

The building plan conceptually regenerates itself, representing the idea of growth in the residents and the community.



- * LEED platinum
- * ENERGY STAR certification
- * Local building materials
- * Natural ventilation
- * Rainwater catchment system
- * Native and drought resistant plantings; less than 20% conventional turf; semi-pervious brick pavers

