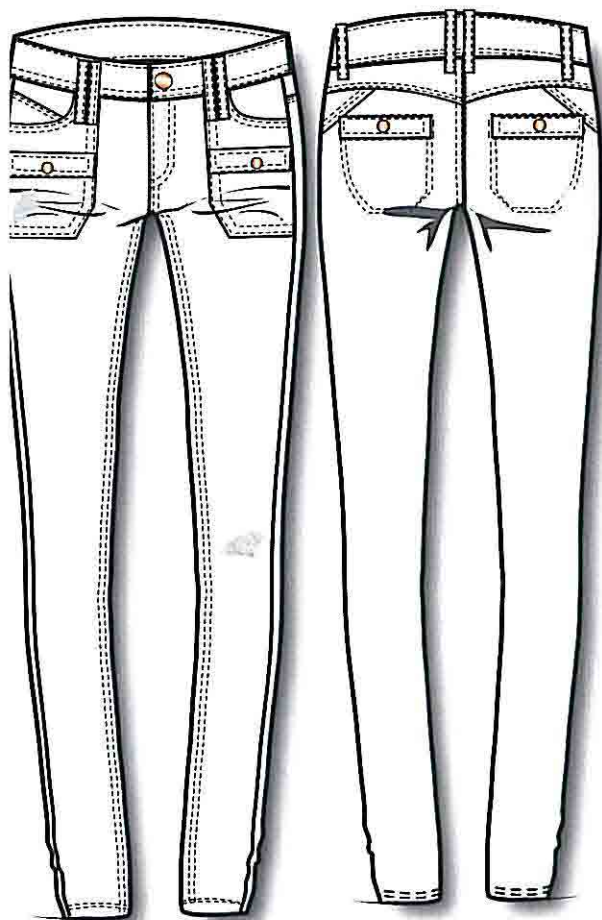


Description:
Patched pocket skinny twill pant in
soft, lightweight Stretch twill

Fabric: Brushed super-stretch very soft
Twill
66% tencel/31% cotton/3% elastane.

**BLACK & WHITE FLAT
SKETCH (see details better)**



5.



MEASUREMENTS

Rise: 8in / 20cm

Inseam: 30in / 76cm

Leg opening: 10in / 25.5cm