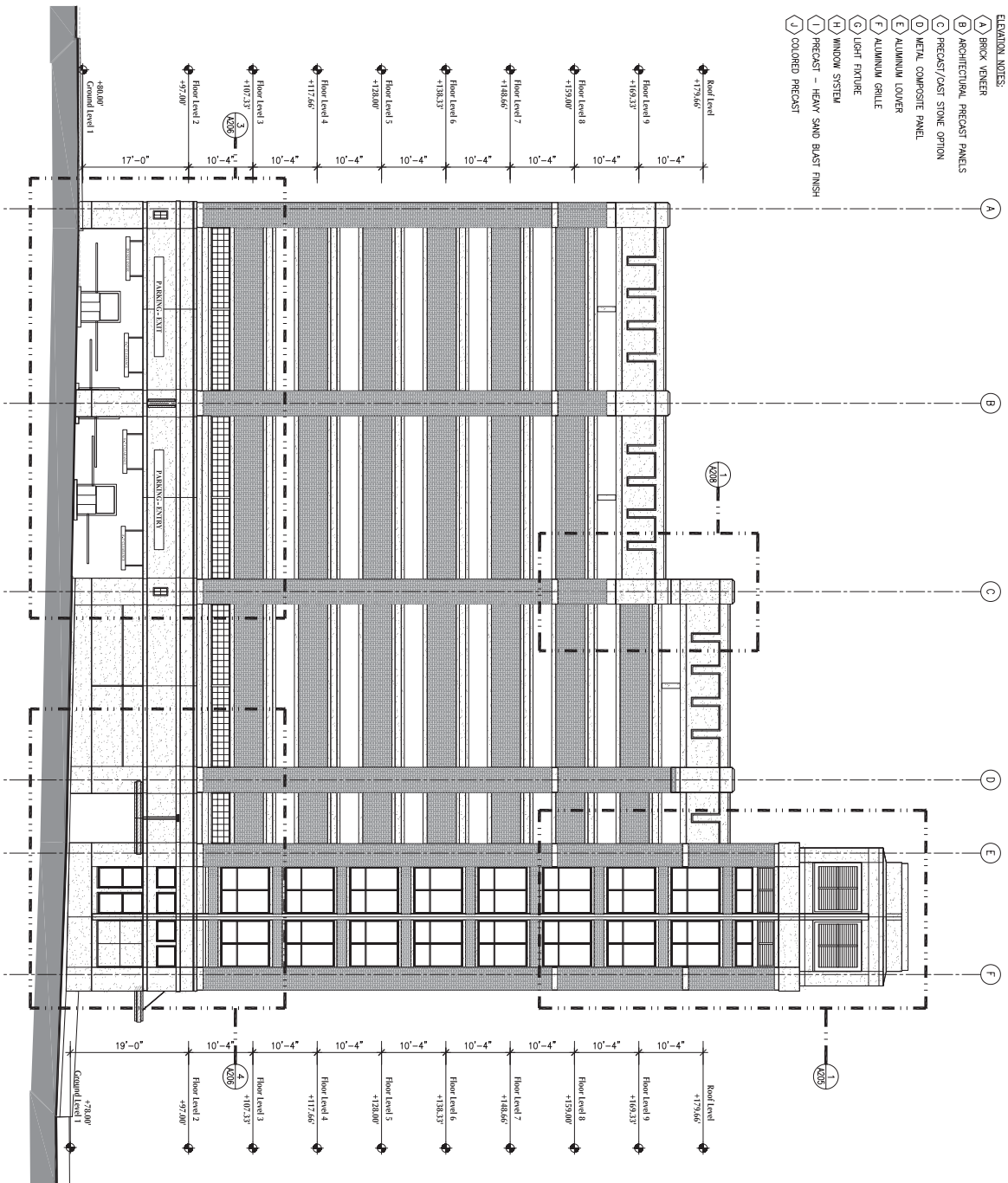


2 PARTIAL ELEVATION
SCALE: 1/2"=1'-0"

- ELEVATION NOTES:
- (A) BRICK VENEER
 - (B) ARCHITECTURAL PRECAST PANELS
 - (C) PRECAST/CAST STONE OPTION
 - (D) METAL COMPOSITE PANEL
 - (E) ALUMINUM LOUVER
 - (F) ALUMINUM GRILLE
 - (G) LIGHT FIXTURE
 - (H) WINDOW SYSTEM
 - (I) PRECAST - HEAVY SAND BLAST FINISH
 - (J) COLORED PRECAST



1 WEST BUILDING ELEVATION
SCALE: 1/8"=1'-0"