



PRODUCTS

DESIGN GALLERY

E-CATALOG

TRADE CONSUMER

E-NEWSLETTER

FIND A DEALER

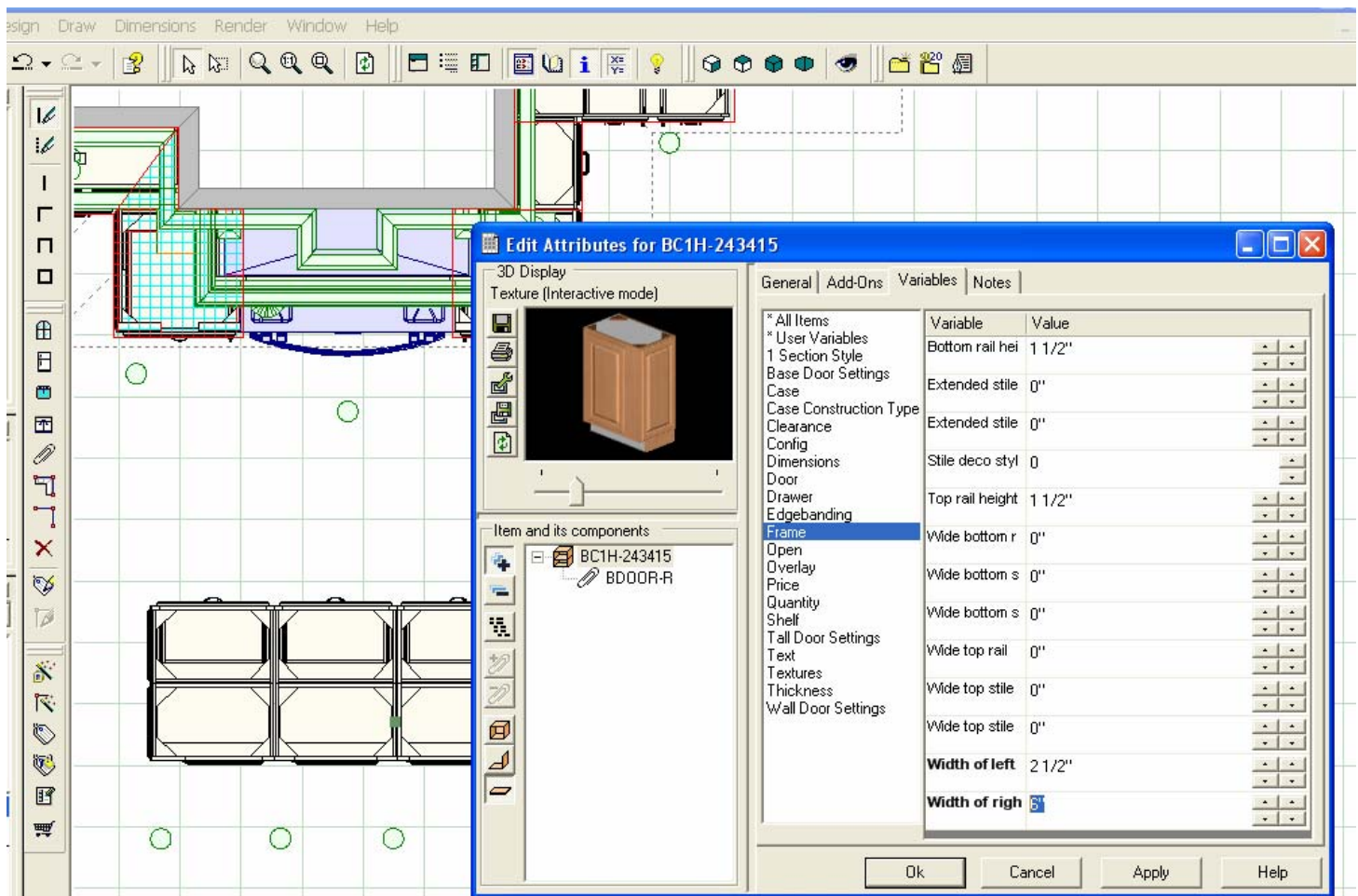
20-20 Tips by Coreena Harbison: Using Corbels in Kitchen Design

This edition's 20-20 Design tip corresponds along with Peter Salerno's design recommendations on how to effectively use corbels in kitchen designs. White River has many different designer styles and sizes to choose from, so you can include a corbel in many applications to achieve your desired look.

The following steps start after all of the walls are drawn, and the windows/doors, appliances, and cabinetry have been installed. These tips are best used when designing with 20-20's Design+ Software, but can also be utilized with 20-20's default cabinetry.

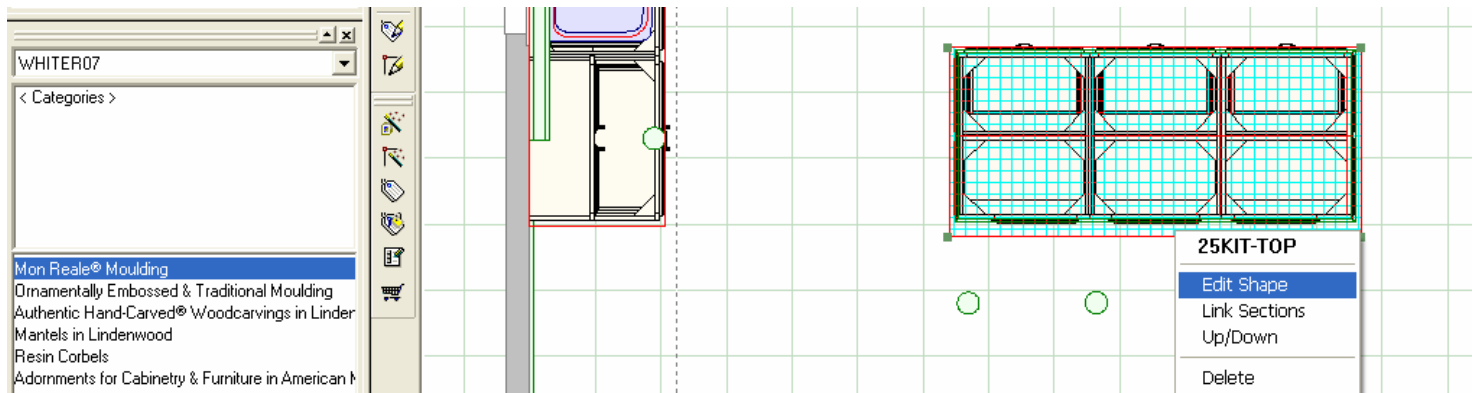
Inserting Corbels on an Island

1. Create an island using base cabinets from the Design+ Catalogs. Pick out a White River Corbel that you would like to use in your design. Note the dimensions of the corbel and make sure the proportion is right for the size of island you are creating. Once you have placed the base cabinets in their final location, right click on the base cabinet and go to "Attributes," then "Variables," then "Frame." Adjust the width of the cabinet stiles so that you have enough room to add a corbel to the front of the cabinet. For this example, I am using the CRV5116, so I make my stiles around 6" wide. **See Picture 1-A.**

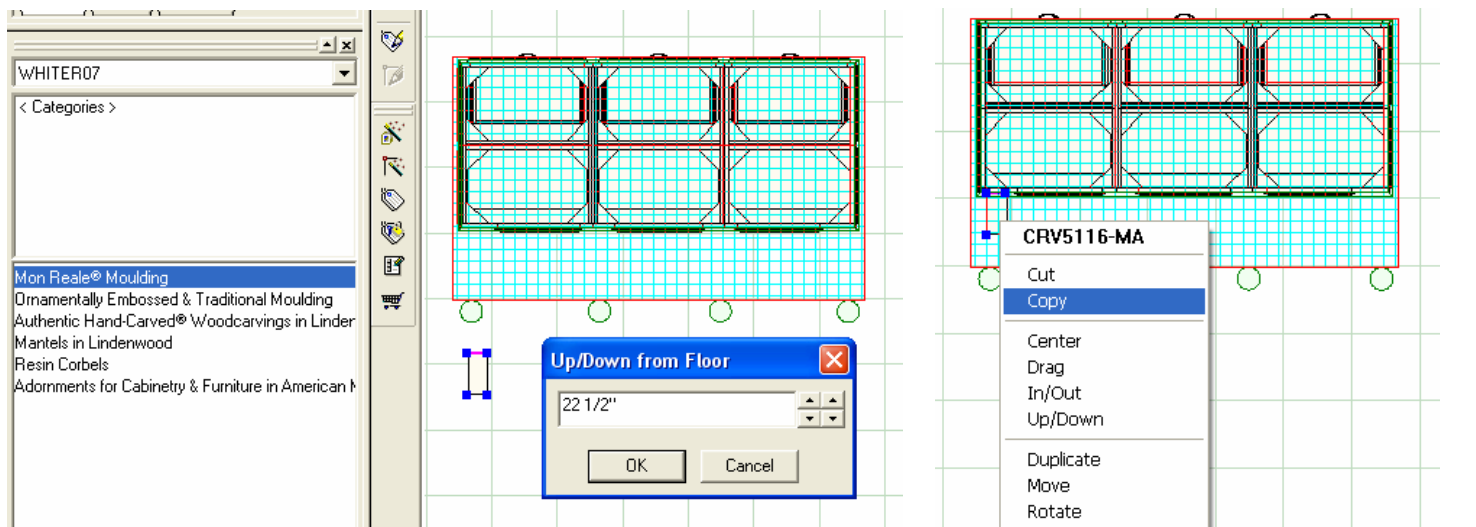


Picture 1-A

2. If you want to add anything else to your island, such as a baseboard or bun feet, add these details before adding the corbels. On my island I added a simple base moulding, and I also added panels to either end of the island. You can do this easily by going into the cabinet "Attributes," then "Add-ons," "Base Specifications," then add a door to the left or right side, whichever is exposed. Also, you will want to add your countertop, and make sure to extend the countertop so that it will fit over the corbels. **See picture 1-B.**

**Picture 1-B**

3. Finally, add the corbels. In the search bar, type in the product number for the corbel you want to add. I am using CRV5113 in Maple (MA). Drag your corbel into your design. Then, right click on the corbel and go to "Up/Down." The dimension applies to where the BOTTOM of the corbel will be. Since the bottom of the counter is at 34 1/2" (or 40 1/2" for bar-height), I subtract the height of the corbel from the bottom of my counter top to get my Up/Down dimension. My corbel is 12" tall, and will therefore be at 22 1/2." **See picture 1-C.**

**Picture 1-C****Picture 1-D**

4. Change the color of the corbel by going into "Attributes," then "Variables." You can change the texture to match the cabinetry. Next, you will want to copy and paste the corbel and place each corbel along the front of your cabinetry or on the sides, everywhere you want a corbel. **See picture 1-D.**

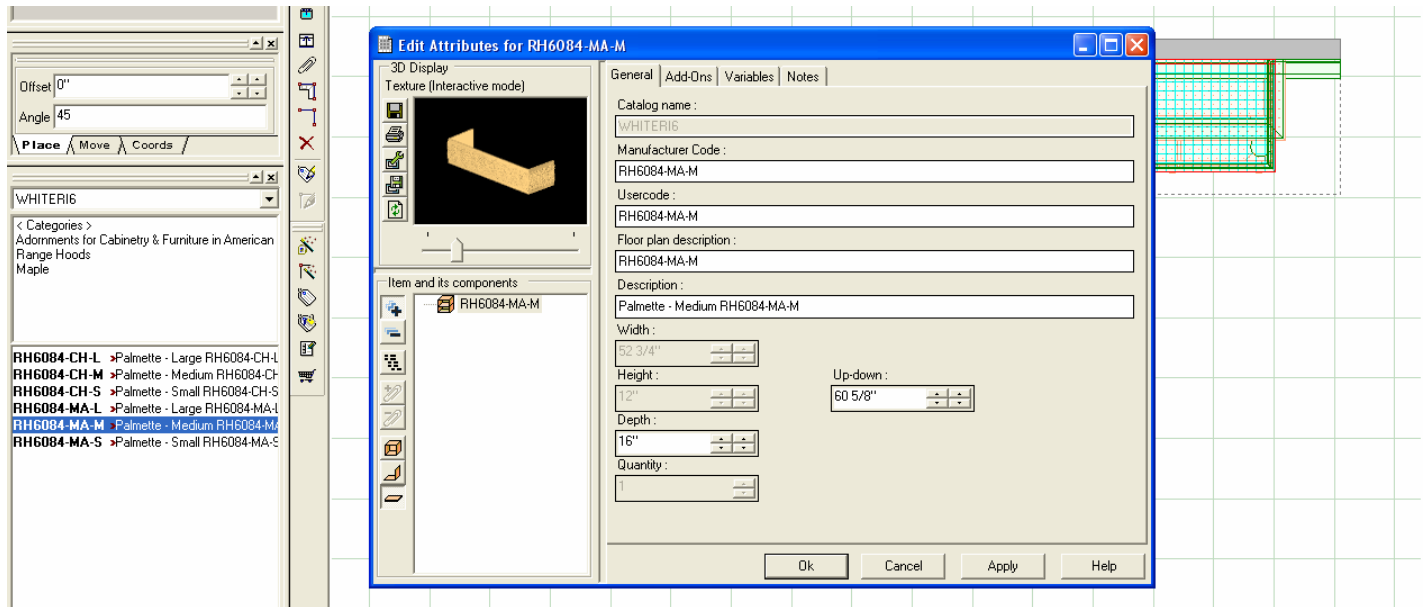
5. Check your work by going to "Render" on the top toolbar. Go to "Perspective" and choose desired height and render setting. Your corbels should fit nicely on the face of your cabinetry and under the counter top. **See Picture 1-E.**

**Picture 1-E**

Inserting Corbels under Rangehood

1. White River has 5 different Rangehoods in different sizes. In my design, the cook top is 36" wide, so I chose the RH6084M. This particular Rangehood's medium size is about 53," which allows adequate space for corbels on either side. As a general rule, your Rangehood should be at least 12" wider than your range if you intend to use corbels in your design.

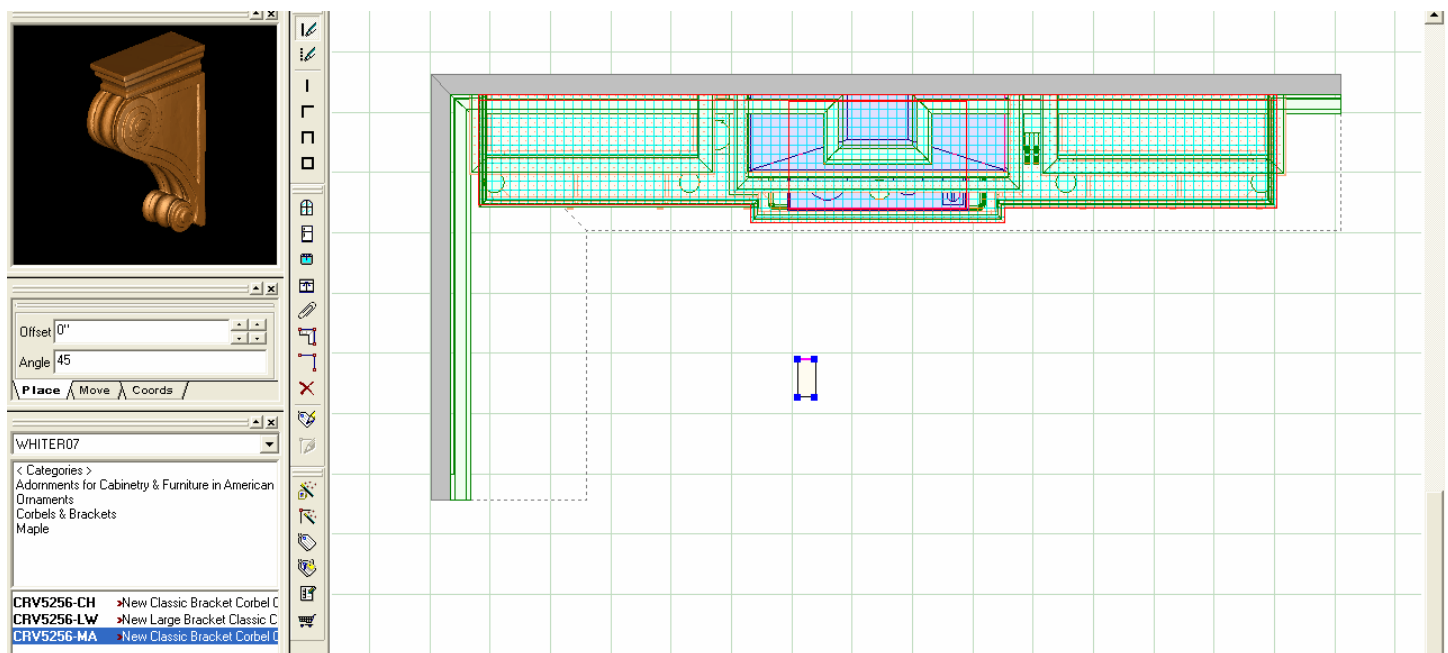
Choose your Rangehood and drag it into the design. Now is a good time to change the finish, so right-click on the Rangehood, go to "Attributes," then "Variables," then change the texture to the desired finish. While still in "Attributes," go to the "General" tab, and change the depth of the range hood from 30" to a shallower dimension. I want my Rangehood to slightly protrude past my upper cabinets, so I choose 16." Here you can also specify how high above the floor you want the Rangehood to sit. I want the bottom of the RH to be around eye level, so I put my Rangehood at 60 5/8." I plan to put a bottom moulding around the RH, and that will be at 60." **See picture 2-A.**



Picture 2-A

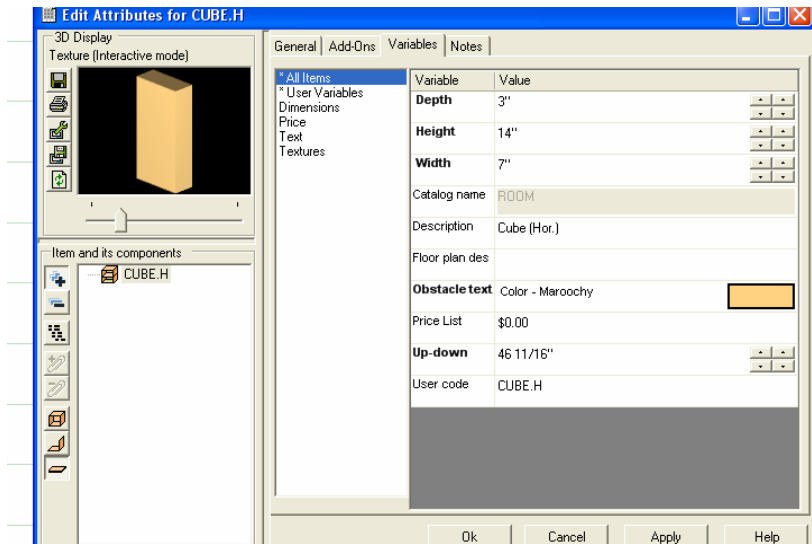
2. Next, center the Rangehood with your range by right-clicking on the Rangehood, and go to "Center." Left-click on the range, then left-click on the Rangehood. It should move to the center of the range. Right-click on the Rangehood again, then go to "In/Out," and drag the Rangehood so it is on the front of the wall.

3. Choose your corbels. Make sure the corbel is proportional to the Rangehood's width and height. Drag it into your design. If you choose a shallower corbel, you may want to add blocking behind it. To do this, go to the "ROOM" catalog, then "Decorative Items," then "Custom Shape," then "Wall Custom Shape," then "Cube-V, vertical." Drag it into your design. **See picture 2-B.**

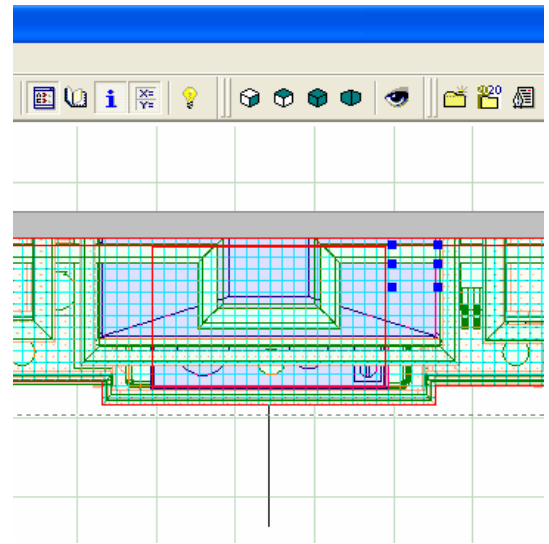


Picture 2-B

4. Note the height and width of your corbel. These dimensions will be the same for your blocking. Right-click on the block, then go to "Attributes" and "General." Change the dimensions of the block. You will also want to change the texture of the block. While still in "Attributes," go to "Variables," then "Texture." After you do this, change the texture of your corbel. **See picture 2-C.**



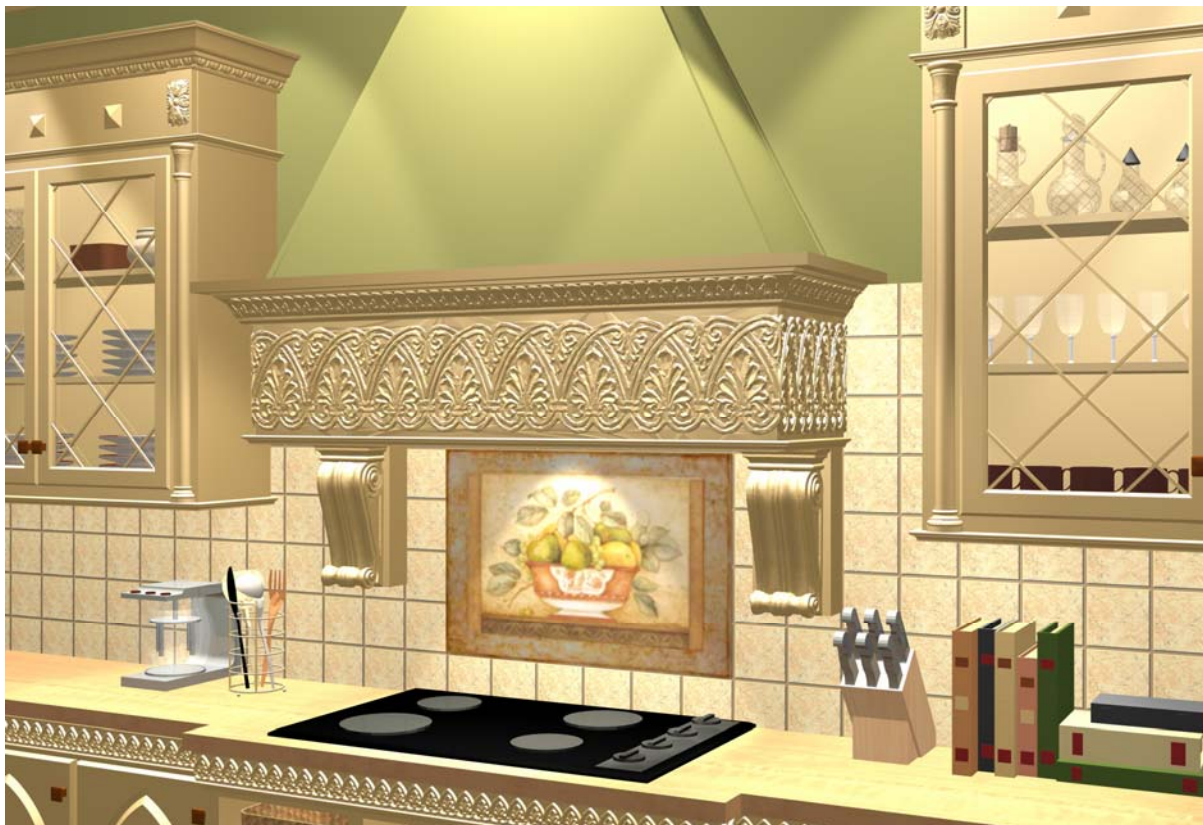
Picture 2-C



Picture 2-D

5. Determine how far above the floor you want your corbel to sit. I chose CRV5253, which is 14" tall. I would like the top of my corbel to be at 60 5/8," under the Rangehood. So the bottom of my corbel will be at 46 5/8." The block will be at the same height.

6. Drag the block so that it sits against the wall, under the far right-hand corner of the Rangehood. Drag your corbel so it is on the front of the block and the back corners of the corbel line up to the front corners of the block. Then, lasso around just the block and corbel, right-click on them, and then click on "Mirror Items." Make sure your "Snap" command is on, and find the center point of the Rangehood. Left-click on the point one time, then drag your mouse straight down and left-click again. The program will ask if you want to delete the original items; Click "No." **See picture 2-D.**



Picture 2-E

7. You can further customize your RH with a crown moulding and a bottom panel mould. For tips on how to add mouldings to cabinetry and other items, go to [http://emailer.emailroi.com/users/whiteriver/MasterList_Oct\\$31\\$2007.html](http://emailer.emailroi.com/users/whiteriver/MasterList_Oct$31$2007.html). You should end up with something like **picture 2-E.**