

# BAKER-FLOW

## SW SERIES: Technical Data

### GENERAL INFORMATION

---

Baker - flow, SW Baker range fully complies to both performance and dimensional standards of international standard DIN 24255 (EN 733) exceeding the specified nominal impeller diameter.

### Casing

---

Volute casing is radially split to allow removal of rotating element without disturbing casing and piping.

### Branch Positions

---

Axial end suction.

Radial vertically upwards centre-line discharge, makes casing self-venting gauge connections are provided as standard.

### Mounting

---

Volute casing has integral cast support feet with holes for holding down bolts. A support foot is fitted to all bearing housings at the coupling end.

### Axial Hydraulic Thrust Balancing of Impellers

---

Smaller sizes are balanced by back vanes on the impeller and other sizes by balance holes and wear ring on rear of impeller. Refer to pages 6, 7, and 8 for specific details for each pump.

### Impeller Peripheral Speed

---

The maximum impeller peripheral speed is 40m/sec. for cast iron impeller and 60m/sec. for bronze impeller.

### Rotation

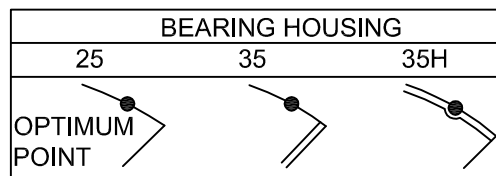
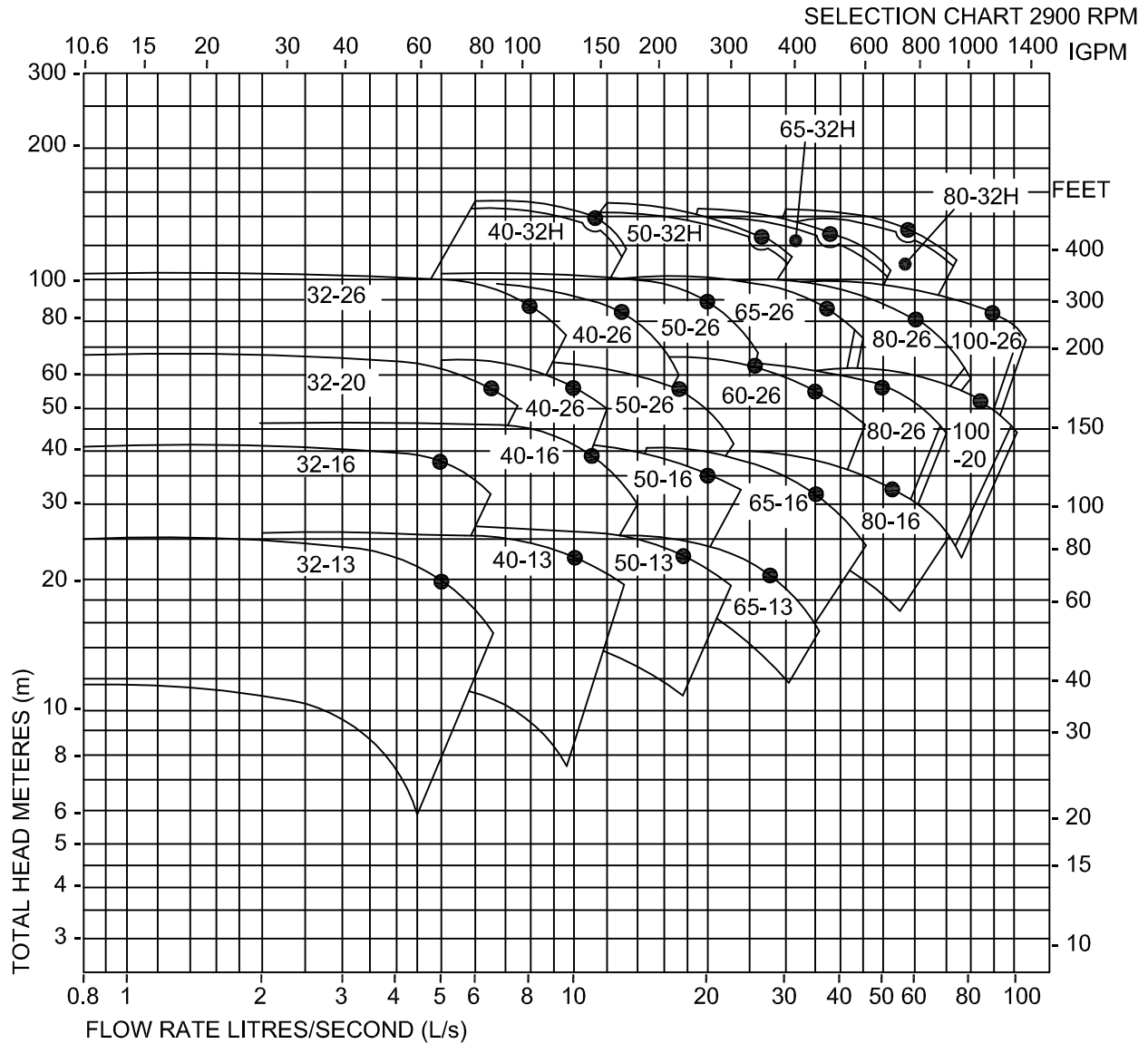
---

Clockwise viewed from drive end.



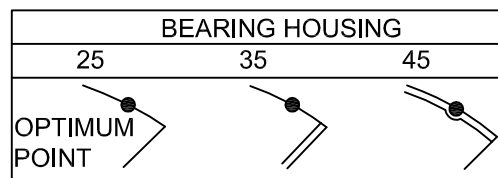
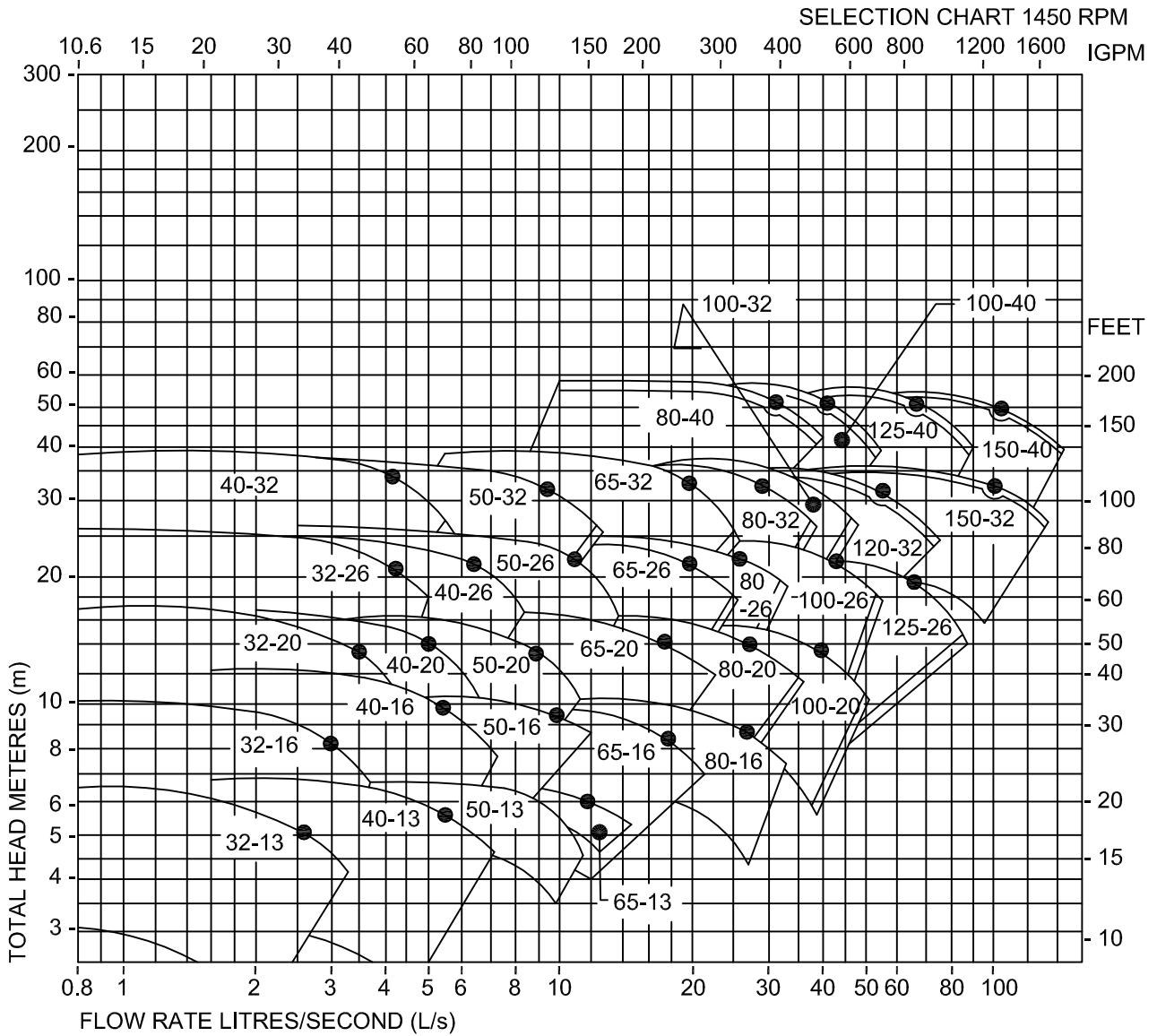
# BAKER-FLOW

## SW SERIES: Back Pull-Out Centrifugal Pumps



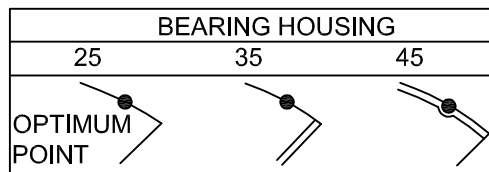
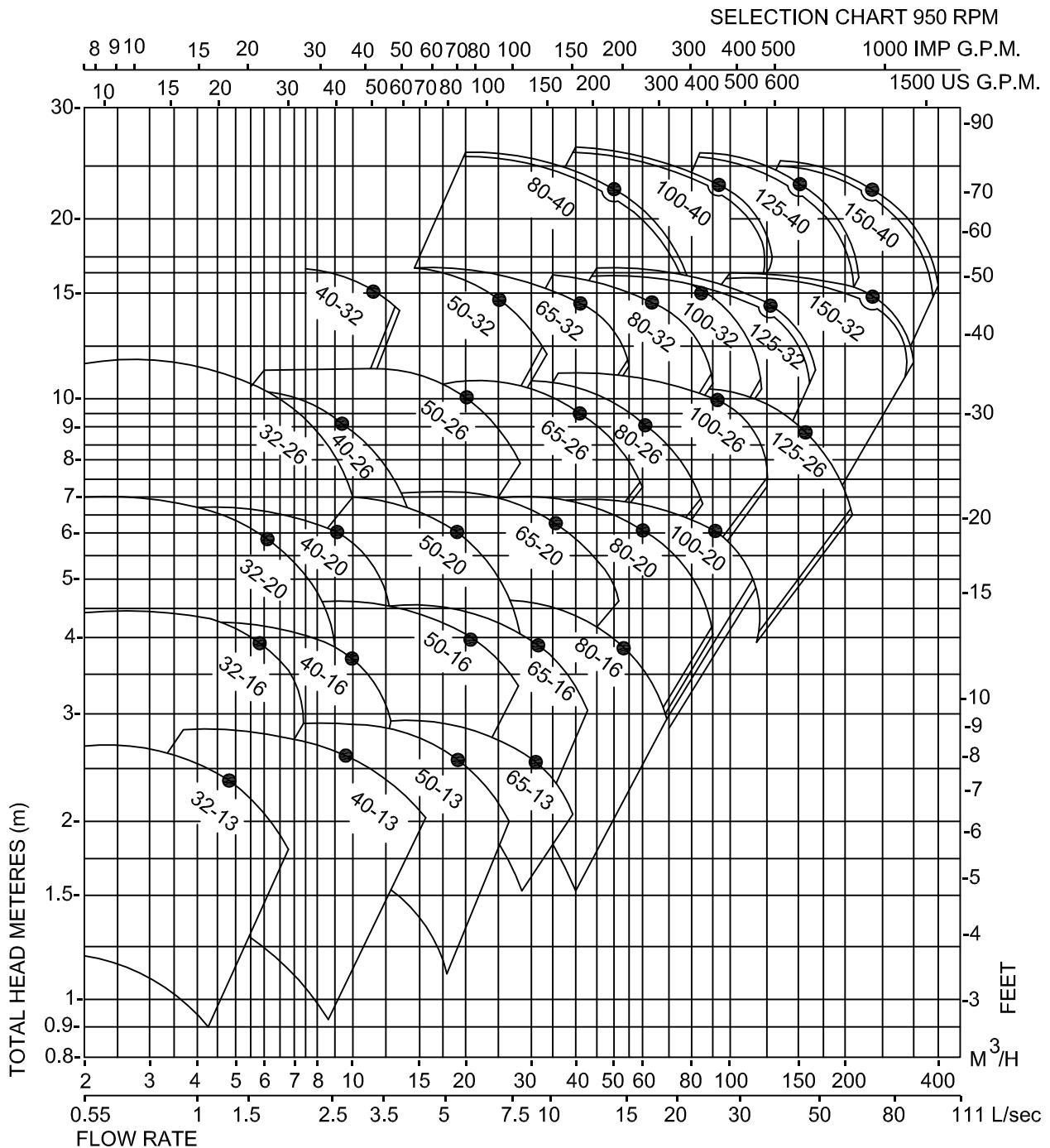
# BAKER-FLOW

## SW SERIES: Back Pull-Out Centrifugal Pumps



# BAKER-FLOW

## SW SERIES: Back Pull-Out Centrifugal Pumps



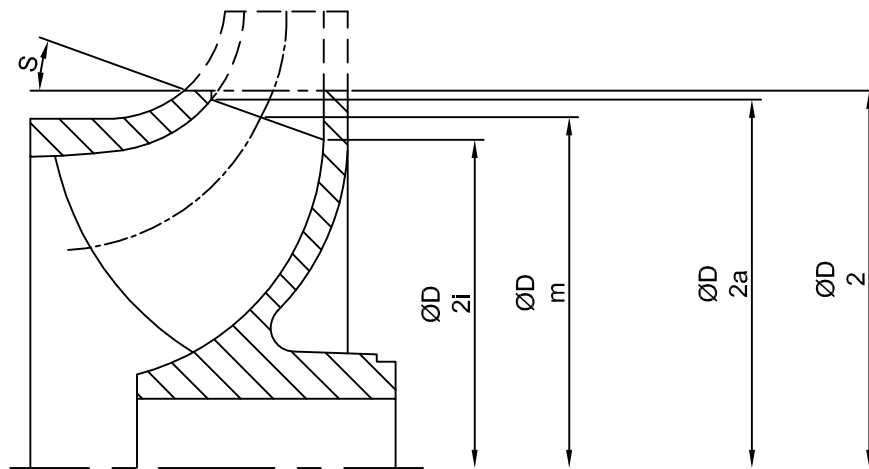
# BAKER-FLOW

## SW SERIES: Back Pull-Out Centrifugal Pumps

### Reducing Impellers

For pumps listed, machine only

The vanes as shown in drawing below.



PUMP SIZE	Dm	D2a	D2i	D2	S
80-16	135	145	125	145	18.5°
	130	140	120	145	18.5°
100-20	165	170	160	170	20°
	160	165	155	170	20°
125-20	195	205	185	205	19°
	185	205	165	205	33°
125-26	205	208	203	215	4.5°
	200	205	195	215	8.5°

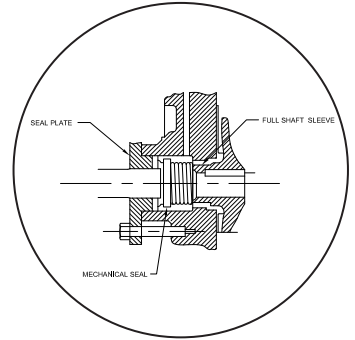
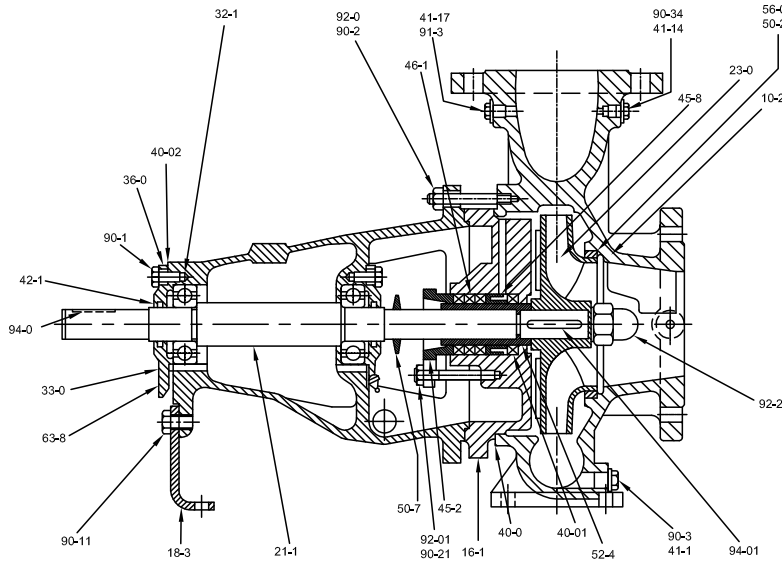


# BAKER-FLOW

## SW SERIES: Back Pull-Out Centrifugal Pumps

### Pumpout Vanes and Clamped Arrangement

Pump Models Applicable
32-13
32-16
40-13
40-16
50-13
50-16
65-13
65-16
80-16
80-20
100-20



PART NO	DESCRIPTION	QTY	PART NO.	DESCRIPTION	QTY.
10-2	Pump Casing	1	46-1	Gland Packing	4
50-2	Case Wear Ring	1	52-4	Shaft Sleeve	1
56-0	Dowel	2	40-01	Sleeve Gasket	1
40-0	Casing Gasket	1	90-21	Stud	2
90-3	Drain Plug	1	92-01	Nut	2
41-1	Gasket Ring	1	33-0	Bearing Housing	1
91-3	Vent Plug	1	36-0	Bearing Cover	2
41-17	Gasket Ring	1	40-02	Gasket	2
23-0	Impeller	1	42-1	Oil Seal	2
90-2	Stud	8/12	32-1	Bearing	2
92-0	Nut	8/12	21-1	Shaft	1
18-3	Support Foot	1	91-0	Coupling Key	1
90-34	Gauge Plug	1	91-01	Impeller Key	1
41-14	Gasket Ring	1	92-2	Impellet Nut	1
90-11	Hex. Screw	1	50-7	Thrower	1
16-1	Casing Cover	1	90-1	Hex. Screw	6
45-8	Lantern Ring	1	63-8	Grease Nipple	2
45-2	Gland	1			



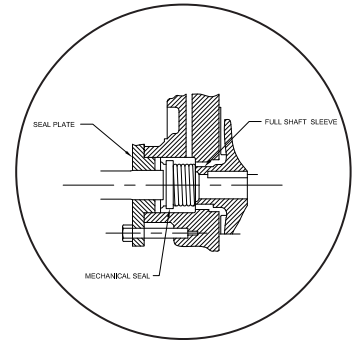
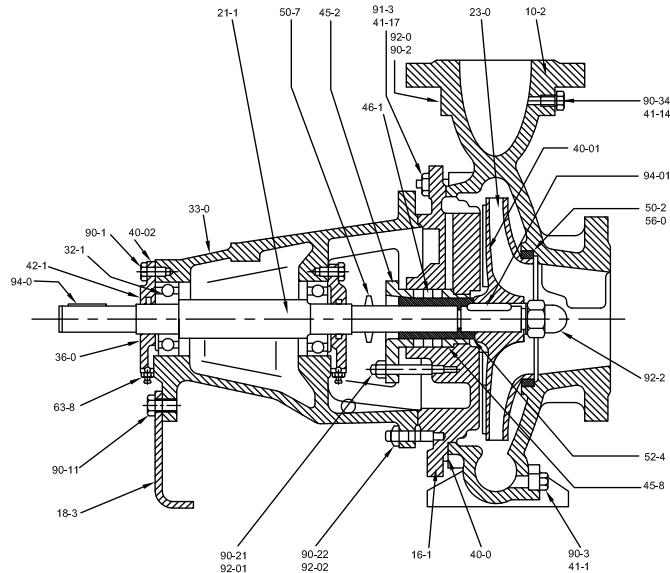
# BAKER-FLOW

## SW SERIES: Back Pull-Out Centrifugal Pumps

### Pumpout Vanes and Bolted Arrangement

#### Pump Models Applicable

32-20  
32-26  
40-20  
40-26  
50-20  
50-26  
65-20  
65-26  
80-26  
100-26  
125-26



PART NO	DESCRIPTION	QTY	PART NO.	DESCRIPTION	QTY.
10-2	Pump Casing	1	52-4	Shaft Sleeve	1
50-2	Case Wear Ring	1	40-01	Sleeve Gasket	1
56-0	Dowel	2	90-22	Stud	8/6
40-0	Casing Gasket	1	92-02	Nut	8/6
90-3	Drain Plug	1	90-21	Stud	2
41-1	Gasket Ring	1	92-01	Nut	2
91-3	Vent Plug	1	33-0	Bearing Housing	1
41-17	Gasket Ring	1	36-0	Bearing Cover	2
23-0	Impeller	1	40-02	Gasket	2
90-2	Stud	8/12	42-1	Oil Seal	2
92-0	Nut	8/12	32-1	Bearing	2
18-3	Support Foot	1	21-1	Shaft	1
90-34	Gauge Plug	1	94-0	Coupling Key	1
41-14	Gasket Ring	1	94-01	Impeller Key	1
90-11	Hex. Screw	1	92-2	Impellet Nut	1
16-1	Casing Cover	1	50-7	Thrower	1
45-8	Lantern Ring	1	90-1	Hex. Screw	6
45-2	Gland	1	63-8	Grease Nipple	2
46-1	Gland Packing	4			



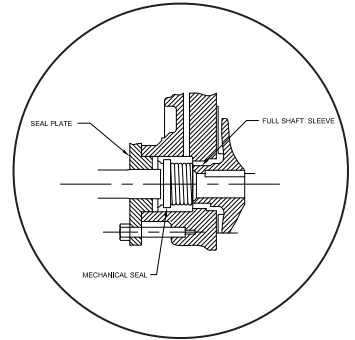
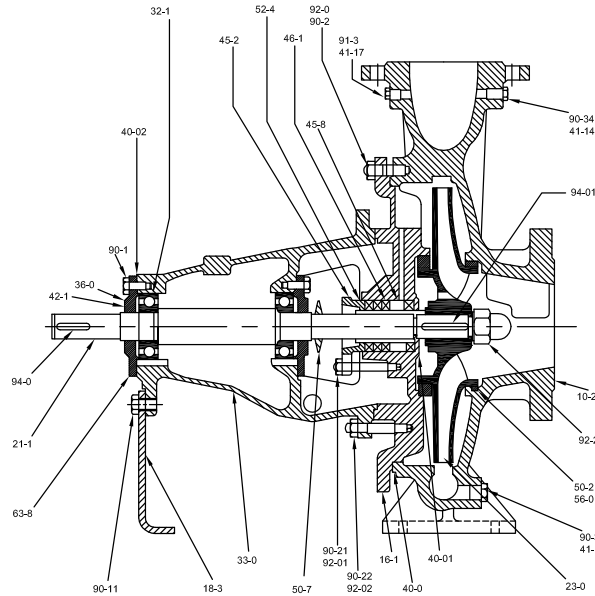
# BAKER-FLOW

## SW SERIES: Back Pull-Out Centrifugal Pumps

### Wear Rings and Bolted Arrangement

#### Pump Models Applicable

40-32  
50-32  
65-32  
80-32  
80-40  
100-32  
100-40  
125-32  
125-40  
150-32  
150-40



PART NO	DESCRIPTION	QTY	PART NO.	DESCRIPTION	QTY.
10-2	Pump Casing	1	46-1	Gland Packing	4
50-2	Case Wear Ring	1	52-4	Shaft Sleeve	1
56-0	Dowel	2	40-01	Sleeve Gasket	1
40-0	Casing Gasket	1	30-22	Stud	2
90-3	Drain Plug	1	92-92	Nut	2
41-1	Gasket Ring	1	90-21	Stud	2
91-3	Vent Plug	1	32-01	Nut	2
41-17	Gasket Ring	1	33-0	Bearing Housing	1
23-0	Impeller	1	36-0	Bearing Cover	2
90-2	Stud	8/12	40-02	Gasket	2
92-0	Nut	8/12	42-1	Oil Seal	2
18-3	Support Foot	1	32-1	Bearing	2
90-34	Gauge Plug	1	21-1	Shaft	1
41-14	Gasket Ring	1	94-0	Coupling Key	1
90-11	Hex. Screw	1	94-01	Impeller Key	1
16-1	Casing Cover	1	92-22	Impellet Nut	1
50-21	Back Wear Ring	1	50-7	Thrower	1
56-0	Dowel	2	90-1	Hex. Screw	6
45-8	Lantern Ring	1	63-8	Grease Nipple	2
45-2	Gland	1			





# BAKER-FLOW

## SW SERIES: Back Pull-Out Centrifugal Pumps

### Material of Construction

Casing	Cast Iron
Impeller	Bronze
Wear Ring	Cast Iron
Shaft	Stainless Steel
Shaft Nut	Bronze
Shaft Sleeve	Stainless Steel
Lantern Ring	Cast Iron
Gland	Cast Iron

### Material Specifications

MATERIAL	NEAREST EOIAVAIENT STANDARD			
	AUSTRALIAN	BRITISH	AMERICAN	DIN
CAST IRON	AS1830/T200	BS1452: GR 220	ASTM A48 CLASS 30	DIN 1691 GG 20
BRONZE	AS1565/8368	BS1400: LG2	ATSM B584 NO. 836	2.1096.03
STAINLESS STEEL	AS 1444 GR 420	BS 970: 420/537	AIS1420	X20CR13

Bearings should be lubricated approximately every 2000 operating hours at 3600 rpm, 2500 operating hours at 3000 rpm, 4000 operating hours at 1800 rpm, 5000 operating hours at 1500 rpm with following or equivalent grease.

SHELL ALVANIA R2  
MOBIL MOBILUX 2  
AMPOL R R 2  
B.P. ENERGREASE LS2  
CALTEX MULTIFAX 2



# BAKER-FLOW

## SW SERIES: Back Pull-Out Centrifugal Pumps

### Basic Operating Limits

PRESSURE	MAXIMUM OPERATING PRESSURE MAXIMUM HYDROSTATIC: TEST PRESSURE MAXIMUM SUCTION PRESSURE 1450 rpm MAXIMUM SUCTION PRESSURE 2900 rpm	Packed Gland	Mech. Seal
		1600 kPa 2400 kPa 600 kPa 400 kPa	1400 kPa 2400 kPa 800 kPa 600 kPa
TEMPERATURE	-10° to 105° C		
MAXIMUM SPEED	3600 rpm		

REFER TO SPECIFIC MODEL FOR EXACT LIMIT

### Maximum Working and Test Pressures

PUMP MODEL	HYDROSTATIC TEST PRESSURE MAXIMUM			MAX. WORKING PRESSURE UP TO 105°C		
	BAR	kPa	PSI	BAR	kPa	PSI
32-13	24.0	2400	348	16.0	1600	232
32-16	24.0	2400	348	16.0	1600	232
32-20	24.0	2400	348	16.0	1600	232
32-26	24.0	2400	348	16.0	1600	232
40-13	24.0	2400	348	16.0	1600	232
40-16	24.0	2400	348	16.0	1600	232
40-20	24.0	2400	348	16.0	1600	232
40-26	24.0	2400	348	16.0	1600	232
40-32	24.0	2400	348	16.0	1600	232
40-32H	24.0	2400	348	16.0	1600	232
50-13	24.0	2400	348	16.0	1600	232
50-16	24.0	2400	348	16.0	1600	232
50-20	24.0	2400	348	16.0	1600	232
50-26	24.0	2400	348	16.0	1600	232
50-32	24.0	2400	348	16.0	1600	232
50-32H	24.0	2400	348	16.0	1600	232
65-13	24.0	2400	348	16.0	1600	232
65-16	24.0	2400	348	16.0	1600	232
65-20	24.0	2400	348	16.0	1600	232
65-26	24.0	2400	348	16.0	1600	232
65-32	24.0	2400	348	16.0	1600	232
65-32H	24.0	2400	348	16.0	1600	232
80-16	24.0	2400	348	16.0	1600	232
80-20	24.0	2400	348	16.0	1600	232
80-26	24.0	2400	348	16.0	1600	232
80-32	24.0	2400	348	16.0	1600	232
80-32H	24.0	2400	348	16.0	1600	232
80-40	17.2	1720	250	13.0	1300	189
100-20	24.0	2400	348	16.0	1600	232
100-26	24.0	2400	348	16.0	1600	232
100-32	21.3	2130	309	16.0	1600	232
100-40	17.2	1720	250	13.0	1300	189
125-26	21.3	2130	309	16.0	1600	232
125-32	21.3	2130	309	16.0	1600	232
125-40	17.2	1720	250	13.0	1300	189
150-32	16.2	1620	235	10.0	1000	145
150-40	16.2	1620	235	10.0	1000	145



# BAKER-FLOW

## SW SERIES: Back Pull-Out Centrifugal Pumps

### Pump Technical Data

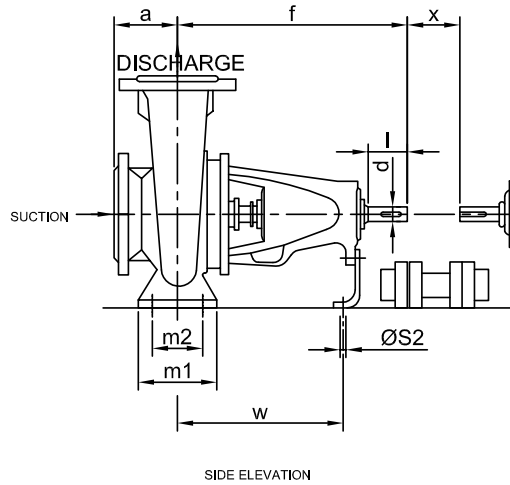
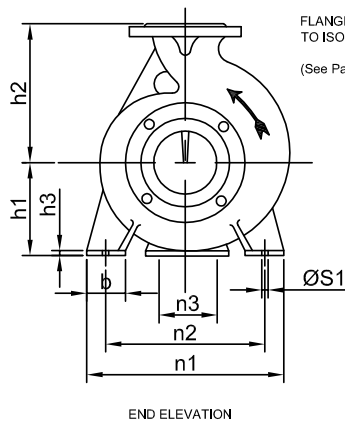
PUMP MODEL	NOMINAL FLANGE SIZE		MAXIMUM NOMINAL SPEED DIRECT COUPLED RPM/IMP. DIA.	MAXIMUM VEE BELT DRIVE SPEED SG=1 RPM	IMPELLER SEAL RING DIA-METRAL CLEARANCE (MM)		IMPELLER DIAMETER (MM)		BEARING TYPE	
	SUCTION (MM)	DISCHARGE (MM)			MAX	MIN	MAX	MIN	FRONT	REAR
32-13	50	32	3600/139	2900	0.4	0.3	139	100	6305	6305
32-16	50	32	3600/174	2900	0.4	0.3	174	125	6305	6305
32-20	50	32	3600/214	2420	0.4	0.3	214	165	6305	6305
32-26	50	32	3000/255	2650	0.4	0.3	264	205	6305	6305
40-13	65	40	3600/139	2900	0.4	0.3	139	100	6305	6305
40-16	65	40	3600/174	2900	0.4	0.3	174	130	6305	6305
40-20	65	40	3600/214	2900	0.4	0.3	214	165	6305	6305
40-26	65	40	3000/255	2480	0.4	0.3	264	205	6305	6305
40-32	65	40	2300/329	1800	0.4	0.3	329	255	6307	6307
40-32H	65	40	2300/329	2000	0.4	0.3	329	255	3307	3307
50-13	65	50	3600/139	2900	0.4	0.3	139	110	6305	6305
50-16	65	50	3600/174	2900	0.4	0.3	174	130	6305	6305
50-20	65	50	3600/214	2900	0.4	0.3	214	165	6305	6305
50-26	65	50	3000/255	2480	0.4	0.3	264	205	6305	6305
50-32	65	50	2300/329	1800	0.4	0.3	329	255	6307	6307
50-32H	65	50	2300/329	2000	0.4	0.3	329	255	3307	3307
65-13	80	65	3600/139	2900	0.4	0.3	139	120	6305	6305
65-16	80	65	3600/174	2900	0.4	0.3	174	125	6305	6305
65-20	80	65	3600/214	2250	0.4	0.3	214	165	6305	6305
65-26	80	65	3000/255	2180	0.4	0.3	264	205	6307	6307
65-32	80	65	2300/329	1450	0.5	0.4	329	255	6307	6307
65-32H	80	65	2300/329	1450	0.5	0.4	329	255	3307	3307
80-16	100	80	3600/174	2850	0.5	0.4	174	140	6305	6305
80-20	100	80	3600/214	2350	0.5	0.4	214	165	6307	6307
80-26	100	80	3000/255	1940	0.5	0.4	264	205	6307	6307
80-32	100	80	1800/329	1450	0.5	0.4	329	255	6307	6307
80-32H	100	80	2900/329	1600	0.5	0.4	329	255	3307	3307
80-40	100	80	1800/409	1405	0.5	0.4	409	320	6309	6309
100-20	125	100	3000/214	2060	0.5	0.4	214	165	6307	6307
100-26	125	100	3000/255	1620	0.5	0.4	264	205	6307	6307
100-32	125	100	1800/329	1380	0.5	0.4	329	255	6307	6307
100-40	125	100	1500/409	1240	0.5	0.4	409	320	6309	6309
125-26	150	125	1800/264	1420	0.5	0.4	264	205	6307	6307
125-32	150	125	1800/329	1440	0.5	0.4	329	255	6309	6309
125-40	150	125	1500/409	1060	0.5	0.4	409	320	6309	6309
150-32	200	150	1800/329	1150	0.5	0.4	329	255	6309	6309
150-40	200	150	1500/409	920	0.5	0.4	409	320	6309	6309

PUMP MODEL	PUMP LIQUID CONTENT LITRES	MINIMUM FLOW L/S (WATER AT AMBIENT TEMPERATURE)	BEARING HOUSING ELEMENT WEIGHT (PUMP LESS CASING) kg
32-13	0.8	0.05	20
32-16	1.0	0.10	25
32-20	1.2	0.20	32
32-26	1.8	0.40	43
40-13	1.1	0.10	21
40-16	1.2	0.15	25
40-20	1.5	0.20	33
40-26	2.1	0.40	44
40-32	2.6	0.70	59
40-32h	2.6	0.70	59
50-13	1.8	0.15	22
50-16	1.8	0.25	25
50-20	2.1	0.30	35
50-26	2.6	0.60	45
50-32	3.1	1.10	56
50-32h	3.1	1.10	56
65-13	2.4	0.20	24
65-16	2.8	0.40	28
65-20	3.1	0.60	35
65-26	3.9	1.00	60
65-32	7.3	2.20	73
65-32h	7.3	2.20	73
80-16	4.0	0.55	31
80-20	4.4	0.80	46
80-26	4.9	1.20	62
80-32	8.3	3.00	74
80-32h	8.3	3.00	74
80-40	9.7	3.00	107
100-20	6.5	1.20	50
100-26	8.0	1.90	66
100-32	9.6	2.40	87
100-40	13.8	2.60	120
125-26	12.0	0.50	67
125-32	14.0	0.55	97
125-40	15.5	0.90	122
150-32	20.0	1.10	101
150-40	24.0	1.30	125



# BAKER-FLOW

## SW SERIES: Back Pull-Out Centrifugal Pumps



PUMP SIZE	BRARING HOUSE	SUCTION	DISCHARG	PUMP DIMENSIONS				FOOT DIMENSIONS											SHAFT	END	NET WEIGHT	
				a	f	h1	h2	b	m <sub>1</sub>	m <sub>2</sub>	n <sub>1</sub>	n <sub>2</sub>	n <sub>3</sub>	h <sub>3</sub>	Øs <sub>1</sub>	Øs <sub>2</sub>	w	x	d	i		
32-13	25	50	32	80	360	112	140	50	100	70	190	140	100	14	14	14	267	140	24	50	8x7	28
32-16	25	50	32	80	360	132	160	50	100	70	240	190	100	14	14	14	267	140	24	50	8x7	36
32-20	25	50	32	80	360	160	180	50	100	70	240	190	110	14	14	14	267	140	24	50	8x7	43
32-26	25	50	32	100	360	180	225	65	125	95	320	250	110	14	14	14	267	140	24	50	8x7	63
40-13	25	65	40	80	360	112	140	50	100	70	210	160	100	14	14	14	267	140	24	50	8x7	31
40-16	25	65	40	80	360	132	160	50	100	70	240	190	100	14	14	14	267	140	24	50	8x7	37
40-20	25	65	40	100	360	160	180	50	100	70	265	212	110	14	14	14	267	140	24	50	8x7	46
40-26	25	65	40	100	360	180	225	65	125	95	320	250	110	14	14	14	267	140	24	50	8x7	63
40-32	35	65	40	125	470	200	250	67	125	95	350	280	110	14	14	14	342	140	32	80	10x8	96
40-32H	35H	65	40	125	470	200	250	67	125	95	350	280	110	14	14	14	342	140	32	80	10x8	96
50-13	25	65	50	100	360	132	160	50	100	70	240	190	100	14	14	14	267	140	24	50	8x7	34
50-16	25	65	50	100	360	160	180	50	100	70	265	212	110	14	14	14	267	140	24	50	8x7	38
50-20	25	65	50	100	360	160	200	50	100	70	265	212	110	14	14	14	267	140	24	50	8x7	48
50-26	25	65	50	100	360	180	225	65	125	95	320	250	110	14	14	14	267	140	24	50	8x7	65
50-32	35	65	50	128	470	225	280	65	125	95	350	280	110	16	14	14	342	140	32	80	10x8	101
50-32H	35H	65	50	128	470	225	280	65	125	95	350	280	110	16	14	14	342	140	32	80	10x8	101
65-13	25	80	65	100	360	160	180	65	125	95	280	212	110	14	14	14	267	140	24	50	8x7	40
65-16	25	80	65	100	360	160	200	65	125	95	280	212	110	14	14	14	267	140	24	50	8x7	44
65-20	25	80	65	100	360	180	225	65	125	95	320	250	110	14	14	14	267	140	24	50	8x7	54
65-26	35	80	65	100	470	200	250	80	160	120	360	280	110	16	18	14	342	140	32	80	10x8	83
65-32	35	80	65	125	470	225	280	80	160	120	400	315	110	16	18	14	342	140	32	80	10x8	110
65-32H	35H	80	65	125	470	225	280	80	160	120	400	315	110	16	18	14	342	140	32	80	10x8	110
80-16	25	100	80	125	360	180	225	65	125	95	320	250	110	14	14	14	267	140	24	50	8x7	55
80-20	35	100	80	125	470	180	250	65	125	95	345	280	110	14	14	14	342	140	32	80	10x8	72
80-26	35	100	80	125	470	200	280	80	160	120	400	315	110	16	18	14	342	140	32	80	10x8	92
80-32	35	100	80	125	470	250	315	80	160	120	400	315	110	16	18	14	342	140	32	80	10x8	120
80-32H	35H	100	80	125	470	250	315	80	160	120	400	315	110	16	18	14	342	140	32	80	10x8	120
80-40	45	100	80	125	530	280	355	80	160	120	440	355	110	16	18	14	370	140	42	110	12x8	162
100-20	35	125	100	125	470	200	280	80	160	120	360	280	110	16	18	14	342	140	32	80	10x8	87
100-26	35	125	100	140	470	225	280	80	160	120	400	315	110	16	18	14	342	140	32	80	10x8	110
100-32	35	125	100	140	470	250	315	80	160	120	400	315	110	16	18	14	342	140	32	80	10x8	134
100-40	45	125	100	140	530	280	355	100	200	150	500	400	110	16	23	14	370	140	42	110	12x8	177
125-26	35	150	125	140	470	250	355	80	160	120	400	315	110	16	18	14	342	140	32	80	10x8	115
125-32	45	150	125	140	530	280	355	100	200	150	500	400	110	18	23	14	370	140	42	110	12x8	163
125-40	45	150	125	140	530	315	400	100	200	150	500	400	110	18	23	14	370	140	42	110	12x8	190
125-50	60	150	125	160	630	355	450	120	250	180	620	500	110	18	26	18	400	140	55	110	12x8	225
150-20	35	200	150	160	495	280	400	100	200	150	550	450	110	18	23	14	367	140	32	110	10x8	140
150-32	45	200	150	160	530	280	400	100	200	150	550	450	110	18	23	14	370	140	42	110	12x8	175
150-40	45	200	150	160	530	315	450	100	200	150	550	450	110	18	23	14	370	140	42	110	12x8	210
150-50	60	200	150	180	670	315	500	100	200	150	550	450	110	14	23	14	500	180	55	110	12x8	320
200-26	45/1	250	200	180	550	280	400	100	200	150	550	450	110	14	26	18	340	140	42	110	12x8	205
200-32	55	250	200	200	670	355	450	100	200	150	550	450	110	20	25	14	500	180	48	110	12x8	315
200-40	44	250	200	200	670	355	500	100	200	150	550	450	110	20	20	14	500	180	48	110	12x8	317
200-50	70	300	250	210	785	400	500	160	300	240	720	600	140	20	26	22	535	180	70	140		410
250-40	70	300	250	240	783	400	500	150	280	200	650	500	140	20	26	22	533	180	70	140		445

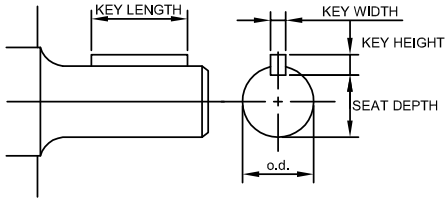
Dimintions in mm



# BAKER-FLOW

## SW SERIES: Back Pull-Out Centrifugal Pumps

### Shaft Dimensions

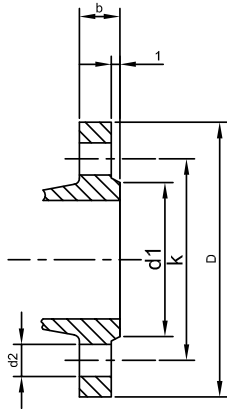


BEARING HOUSING	DIAMETER d		KEY LENGTH	KEY HEIGHT	KEY WIDTH	SEAT DEPTH
	NOM	TOL				
25	24	-0.004 +0.009	32	7	8	20
35	32	+0.002 +0.018	40	8	10	27
45	42	+0.002 +0.018	50	8	12	37

Key dimensions are nominal

Dimension in mm

### Flange Data

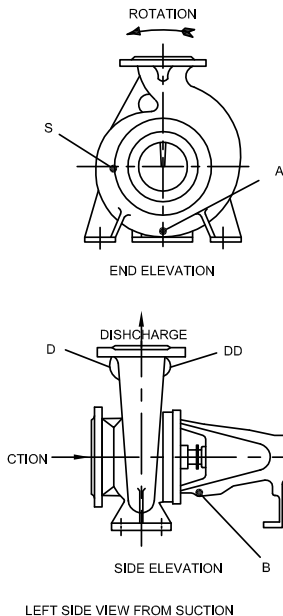


BRANCH SIZE	FLANGE		RAISED FACE		DRILLING			BOLTING
	D	b	d <sub>1</sub>	f	NO.	d <sub>2</sub>	k	
32	140	18	78	2	4	18	100	M16
40	150	18	88	3	4	18	110	M16
50	165	20	102	3	4	18	125	M16
65	185	20	122	3	4	18	145	M16
80	200	22	138	3	8	18	160	M16
100	220	24	158	3	8	18	180	M16
125	250	26	188	3	8	18	210	M16
150	285	26	212	3	8	22	240	M20
200	340	30	268	3	12	22	295	M20

Flange Dimensions and drilling according to ISO 2084 - 16BAR  
(BS4404 - 16/11. DIN 2633 ND16)

\*Holes - Equally spaced straddling pump centreline.

### Service Connections



PUMP MODEL	A	B*	D	DD	S
	CASING DRAIN	HOUSING DRAIN	GAUGE TAPPING	VENT TAPPING	GAUGE TAPPING
32-13	1/4	3/8	1/4	1/4	1/4
32-16	1/4	3/8	1/4	1/4	1/4
32-20	1/4	3/8	1/4	1/4	1/4
32-26	3/8	3/8	1/4	1/4	1/4
40-13	1/4	3/8	1/4	1/4	1/4
40-16	1/4	3/8	1/4	1/4	1/4
40-20	1/4	3/8	1/4	1/4	1/4
40-26	3/8	3/8	1/4	1/4	1/4
40-32	3/8	3/8	1/4	1/4	1/4
40-32H	3/8	3/8	1/4	1/4	1/4
50-13	1/4	3/8	1/4	1/4	1/4
50-16	3/8	3/8	1/4	1/4	1/4
50-20	1/4	3/8	1/4	1/4	1/4
50-26	3/8	3/8	1/4	1/4	1/4
50-32	3/8	3/8	1/4	1/4	1/4
50-32H	3/8	3/8	1/4	1/4	1/4
65-13	1/4	3/8	1/4	1/4	1/4
65-16	3/8	3/8	1/4	1/4	1/4

PUMP MODEL	A	B*	D	DD	S
	CASING DRAIN	HOUSING DRAIN	GAUGE TAPPING	VENT TAPPING	GAUGE TAPPING
65-20	3/8	3/8	1/4	1/4	1/4
65-26	3/8	3/8	1/4	1/4	1/4
65-32	3/8	3/8	1/4	1/4	1/4
65-32H	3/8	3/8	1/4	1/4	1/4
80-16	3/8	3/8	1/4	1/4	1/4
80-20	3/8	3/8	1/4	1/4	1/4
80-26	3/8	3/8	1/4	1/4	1/4
80-32	3/8	3/8	3/8	1/4	3/8
80-32H	3/8	3/8	3/8	3/8	3/8
80-40	3/8	3/8	3/8	3/8	3/8
100-20	3/8	3/8	3/8	3/8	3/8
100-26	3/8	3/8	1/2	3/8	1/2
100-40	3/8	1/2	1/2	3/8	1/2
125-26	3/8	1/2	1/2	3/8	1/2
125-32	3/8	1/2	1/2	3/8	1/2
125-40	3/8	1/2	1/2	3/8	1/2
150-32	3/8	1/2	1/2	3/8	1/2
150-40	3/8	1/2	1/2	3/8	1/2

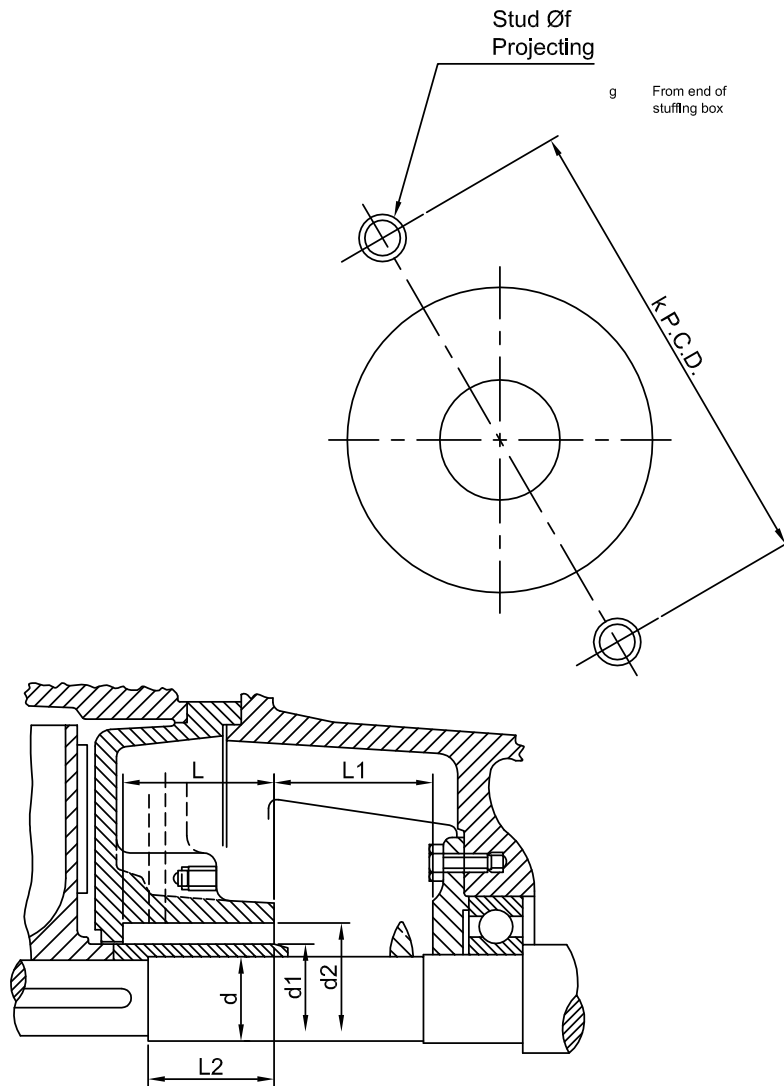
Note all services connections are BSP female parallel thread.



# BAKER-FLOW

## SW SERIES: Back Pull-Out Centrifugal Pumps

### Sluffing Box Dimensions



BEARING HOUSING	L	L1	L2	d	d1	d2	k	f	g	PACKING		
										size	No rings	
25	50	60	47.5	24	32	48	85	M8	35	8Sq	4 WITH LANTERN RING	6 WITHOUT LANTERN RING
35	63	67	63	32	40	60	100	M10	40	10Sq		
45	63	85	55	44	55	75	110	M12	50	10Sq		

Dimensions in millimetres

# BAKER-FLOW

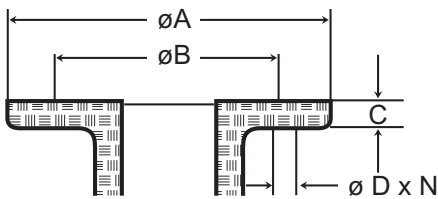
## SW SERIES: Back Pull-Out Centrifugal Pumps

### FLANGE GASKETS

- Rubber Insertion -1.6mm 0
- Table E and Din 16
- 25mm to 250mm
- Ex-Stock!



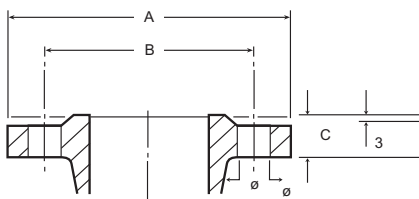
TABLE E FLANGE TABLE



NOMINAL FLANGE SIZE		32	40	50	65	80	100	125	150	200	250
FLANGE DIAMETER	A	140	150	165	185	200	220	250	285	340	405
HOLE P.C.O.	B	87	98	114	127	146	178	210	235	292	356
FLANGE THICKNESS	C	18	18	20	20	22	24	26	26	30	32
HOLE DIAMETER	D	14	14	18	18	18	18	18	22	22	22
NUMBER OF HOLES	N	4	4	4	4	4	8	8	8	8	12

**Note :** 1. Holes machined off centrelines.  
2. Flange drilling as shown above conforms to AS2129-1982 Table 'E' cast iron flanges.

DIN 16 FLANGE TABLE



NOMINAL FLANGE SIZE		32	40	50	65	80	100	125	150	200	250
FLANGE Ø	A	140	150	165	200	200	220	250	285	340	405
HOLE P.C.O.	B	100	110	125	160	160	180	210	240	295	355
FLANGE THICKNESS	C	18	18	20	22	22	24	26	26	30	32
HOLE Ø	D	18	18	18	18	18	18	18	22	22	27
# HOLES	N	4	4	4	8	2	8	8	8	12	12

**Note :** 1. Holes machined off centrelines.  
2. Flange drilling as shown above conforms to DIN 2533 DIN 16 cast iron flanges.



# BAKER-FLOW

SW SERIES: Back Pull-Out Centrifugal Pumps

## Other Products available from Masterflow:



Long-Coupled Pumpsets



Close-Coupled Motor-pumps



Vertical Inline Motor-Pumps



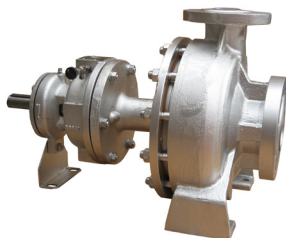
Buffer Tanks & Storage Tanks



Special Purpose Tanks  
(eg. Glycol Tanks)



Filtration Products



Special Purpose High Temperature  
Pumps

COMING SOON  
SUCTION DIFFUSERS

Diesel Tanks

Phone: (02) 9748 2022 | Fax: (02) 9748 2099

Email: [sales@masterflow.net.au](mailto:sales@masterflow.net.au) | Website: [www.masterflow.net.au](http://www.masterflow.net.au)

