



PIPELINE & PLANTROOM ACCESSORIES

Phone: (02) 9748 2022 | Fax: (02) 9748 2099
Email: sales@masterflow.net.au | Website: www.masterflow.net.au

Masterflow... 'Your One-Stop Shop'

At Masterflow, we are committed to making your life easier.

- Easy to order.
- Extensive product range
- Quick dispatch times
- Fast delivery service
- Delivery to anywhere in Australia
- All prices quoted are exclusive of GST.

Sydney



Brisbane



Melbourne



Adelaide



Perth



Darwin



Hobart



Launceston



Bundaberg



Cairns



Townsville



Rockhampton



116 Carnarvon Street,
Silverwater, NSW, 2128

TEL: (02) 9748 2022

FAX: (02) 9748 2099

Email: sales@masterflow.net.au

Website: www.masterflow.net.au

... and many other destinations!

CONTENTS PAGE

(Refer to Back Cover for complete Product Index)

Expansion Tanks	04
Backflow Prevention.	06
Chemical Dosing Pots	08
Vibration INoise Control	09
Condensate Pumps	15
Pipeline Accessories	18
Pumpset Spare Parts	24
Air & Dirt Separators	28
Balancing Valves	30



116 Carnarvon Street,
Silverwater, NSW, 2128

TEL: (02) 9748 2022

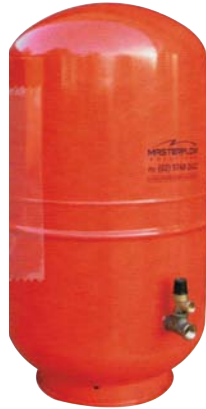
FAX: (02) 9748 2099

Email: sales@masterflow.net.au

Website: www.masterflow.net.au

EXPANSION VESSELS

(Closed / Pressurised Type)



- Fitted with Safety Relief Valve
- 3Bar, 6Bar rated
- Size 8L to 25 – Available with wall-mounting bracket
- Size 35L and above are foot-mounted (free standing)

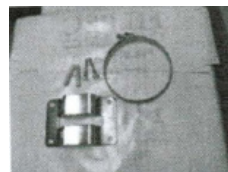
EXPANSION TANKS



Model	Nominal Volume (L)	Expansion Capacity (L)	Pressure Max (KPA)	ØD (mm)	H (mm)	h (mm)	A BSP (inch)	Weight (Kg)
3AF8/3SV	8	4	300	272	233	--	¾	1.9
3AF12/3SV	12	6	300	272	315	--	¾	2.6
3AF18/3SV	18	9	300	308	360	--	¾	3.5
3AF25/3SV	25	12	300	308	480	--	¾	4.6
3AF35/3SV	35	17	300	376	465	130	¾	5.4
6AF50/3SV	50	25	600	441	495	175	¾	12.5
6AF80/3SV	80	40	600	512	570	175	1	17.0
6AF100/3SV	100	50	600	512	680	175	1	20.5
6AF140/3SV	140	70	600	512	890	175	1	28.6
6AF200/3SV	200	100	600	634	785	235	1	36.7
6AF250/3SV	250	125	600	634	915	235	1	45.0
6AF300/3SV	300	150	600	634	1085	235	1	52.0
6AF400/3SV	400	200	600	740	1075	245	1	65.0
6AF500/3SV	500	250	600	740	1295	245	1	79.0
6AF500/3SV	600	300	600	740	1530	245	1	85.0
6AF800/3SV	800	400	600	740	1990	245	1	103.0

- Larger sizes (1000L-10,000L) available on request. Ask about our "Monster" series.
- Higher Pressures (10 Bar / 16 Bar / 25 Bar) available on request.

WALL BRACKET



Description	Price
Wall mount bracket for tanks 4L-25L Part No: Z912501	\$52.00



MASTERFLOW
SOLUTIONS

116 Carnarvon Street,
Silverwater, NSW, 2128

TEL: (02) 9748 2022

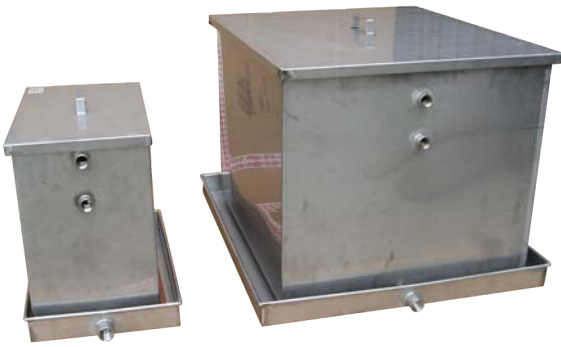
FAX: (02) 9748 2099

Email: sales@masterflow.net.au

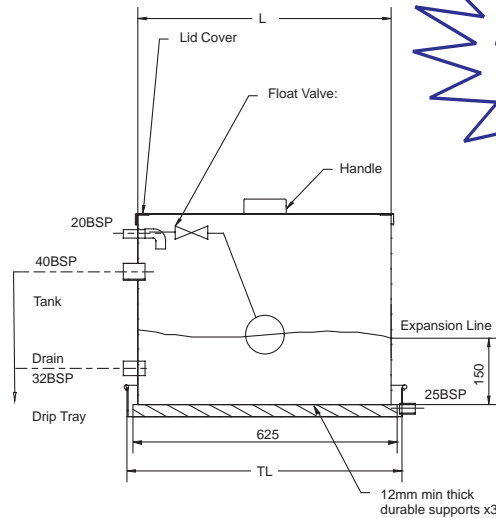
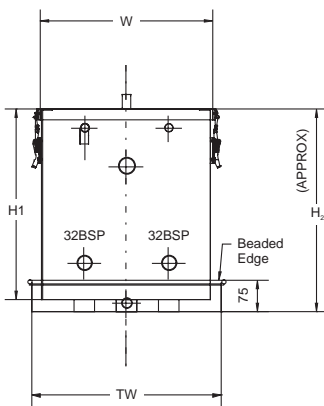
Website: www.masterflow.net.au

FEED & RETURN EXPANSION TANK

(Open/Atmospheric Type)



- Available in 5 standard sizes
- Stainless Steel construction
- Safe tray 75mm high
- Durable supports & float valve included
- Fast - Fill connection
- Optional latches for outdoor locations



Wall-mount brackets and tank stands are available on request

Model	Nominal Volume (L)	Approx. Expansion Capacity (L)	Dimensions (mm)				Tray Dimensions		Weight (Kg)
			L	W	H ₁	H ₂	TL	TW	
OET 50	50	16	500	300	450	462	550	350	14.8
OET 100	100	40	600	400	450	462	650	450	19.3
OET 200	200	84	780	500	500	512	880	600	28
OET 300	300	138	780	680	600	612	780	780	38.5
OET 650	650	398	1000	680	930	942	1100	780	76

Outdoor Latch System

- Specify at time of order if units are being installed outside.



MASTERFLOW
SOLUTIONS

116 Carnarvon Street,
Silverwater, NSW, 2128

TEL: (02) 9748 2022

FAX: (02) 9748 2099

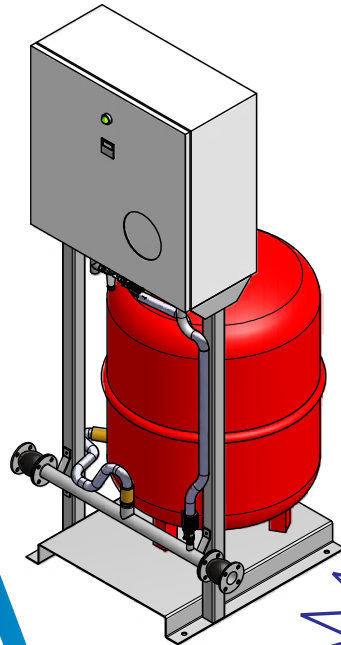
Email: sales@masterflow.net.au

Website: www.masterflow.net.au

AUTOMATIC RE-FILL UNITS

- They are a break-tank device and suitable for high hazard applications. The ultimate solution for backflow prevention.
- They do not require the annual certification as do Reduced Pressure Zone type devices (RPZ).
- Compliant with AS3500 National Plumbers Code.
- Available in various configurations including pre-assembled package with manifold allowing ease of installation by site plumber.
- Available with many options including dual pump, hour run meters, low level alarms, volt free contacts for BMS Control
- Fully enclosed in steel cabinet.
- Completely automatic operation.

COMPLETE PACKAGED UNIT



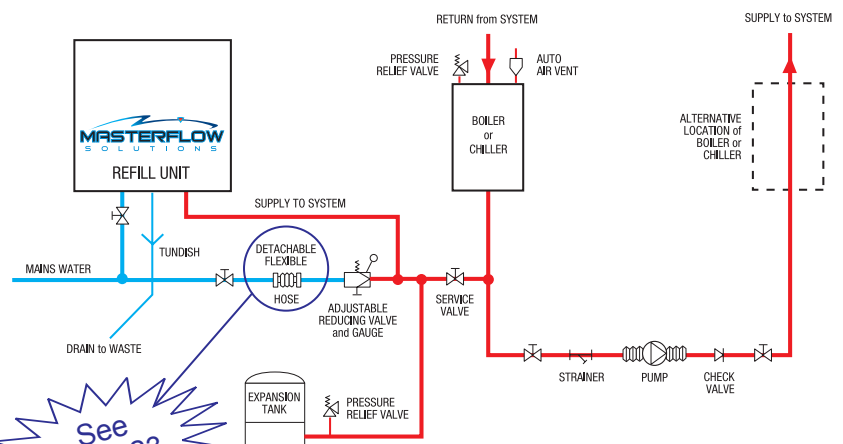
CABINET UNIT SEPARATE FOR MOUNTING TO WALL



For more information, refer to our separate Brochure

INSTALLATION DIAGRAM

Typical connection to closed expansion system



See Page 23

MASTERFLOW
SOLUTIONS

116 Carnarvon Street,
Silverwater, NSW, 2128

TEL: (02) 9748 2022

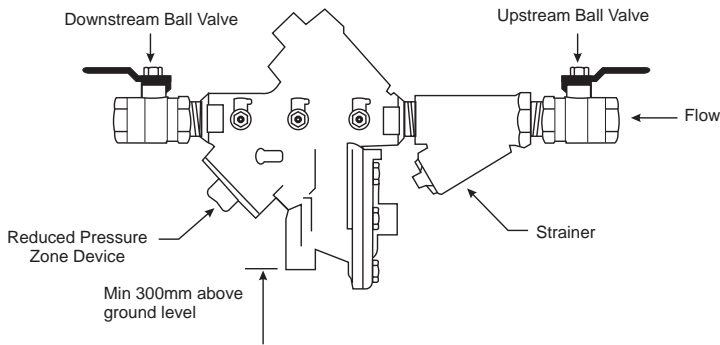
FAX: (02) 9748 2099

Email: sales@masterflow.net.au

Website: www.masterflow.net.au

RPZ VALVES

- Prevents backflow into the mains water supply.
- Suitable for high hazard installations (AS3500.1)
- Bronze / stainless construction
- Pressure, Max 1220KpA Min 100KpA.
- Temperature Range 3-80° C
- Standard size is 1/2" (15mm), larger sizes also available



**TYPICAL INSTALLATION
OF A REDUCED PRESSURE
ZONE DEVICE**
Complies to AS 3500

QUICK-FILL KIT

Allows water to enter the system from town main and automatically closes when a pre set pressure is achieved.

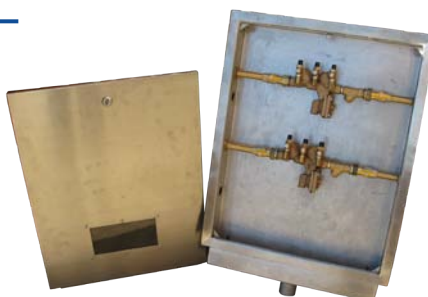
A Quick-fill kit consist of three components:

1. Pressure Gauge (0-160 PSI, dry, 50mm dial, with dual scale PSI/KPA, black steel case, lower mount 1/4" BSPT thread).
2. Pressure Reducing Valve (15mm/1/2," brass, factory set at 500KPA, fully adjustable between 100-600KPA, handles up to 60 degrees Celsius, has inbuilt strainer and replaceable cartridge.)
3. Automatic Air Vent (10mm, brass body, with stainless steel spring).
4. Braided hose piece to comply with the "detachable hose" clause of AS3500. Refer to page 23. Optional extra-not part of the standard kit.



RPZ CABINETS

- Stainless steel
- Tundish viewing panel
- Single and dual
- 2 sizes available
- Removable door



MASTERFLOW
SOLUTIONS

116 Carnarvon Street,
Silverwater, NSW, 2128

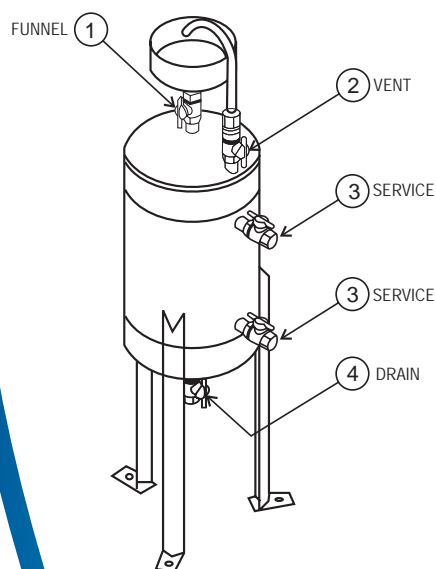
TEL: (02) 9748 2022

FAX: (02) 9748 2099

Email: sales@masterflow.net.au

Website: www.masterflow.net.au

CHEMICAL DOSING POTS



- **Stainless Steel Construction**
- **Robust Legs**
- **14 Litres - 20 Litres**
- **Other sizes upon request**
- **Individually pressure tested.**
- **Readily available - Ex stock!**

Model	Size (L)	Dimensions (mm)		Connections				Weight (kg)
		O/H	W	1.	2.	3.	4.	
MDP 14-SS	14	1000	219	½" (15mm)				7.5
MDP 15-SS	15	1173	219					
MDP 20-SS	20	1273	219					

- *Larger sizes available on request*

OPERATION INSTRUCTIONS

1. Close both service valves (3) and open (4) drain dosing pot.
2. When drained, close (4) and open (1) and (2).
3. Add chemical dose through the funnel allowing pot to vent through (1).
4. Close funnel valve (2) and partially open one service valve (3) to fill pot and vent out remaining air through (1).
5. When vented, close valve (1), open both service valves (3) and the system pump will circulate the dose through the system.



116 Carnarvon Street,
Silverwater, NSW, 2128

TEL: (02) 9748 2022

FAX: (02) 9748 2099

Email: sales@masterflow.net.au

Website: www.masterflow.net.au

INERTIA BASES

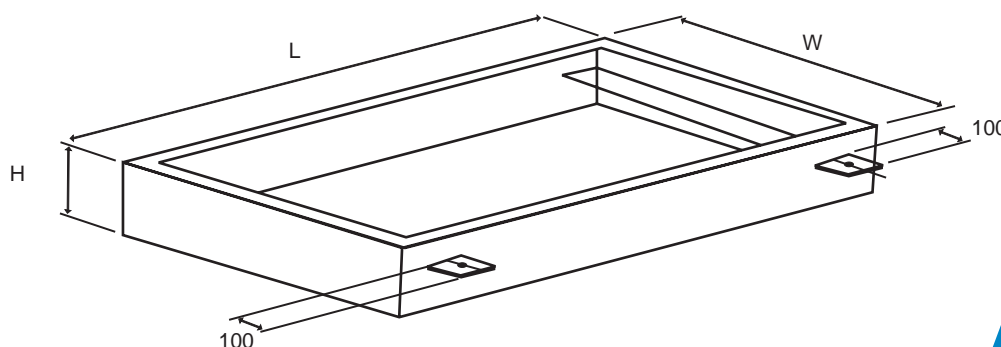
- Increases the mass of the pumping equipment
- Reduces vibration on start-up and shut-down
- Available in six (6) standard sizes
- Includes steel mesh reinforcement and out-riggers
- Spring mounts supplied on request - refer page 2
- Concrete-filling is done on site by others.



Model	Dimensions (mm) L x W x H	Weight (Excl. concrete)	Weight (Incl. concrete)	Price Each (Excl. GST)
XS	0.6 x 0.6 x 0.15	15	127	\$265.00
S	1.2 x 0.6 x 0.18	18	304	\$285.00
M	1.5 x 0.75 x 0.2	25	528	\$300.00
L	1.6 x 0.9 x 0.2	39	676	\$325.00
XL	1.8 x 0.9 x 0.25	45	950	\$360.00
XXL	2.0 x 0.9 x 0.3	54	1269	\$400.00

NB.

- Calculation of weight of base when filled with concrete is based on volume x 2350, i.e. L x W x H x 2350 = weight (kg).
- Outriggers protrude both sides by 100mm on standard units.



INSTALLATION NOTES

- Inertia base frames are supplied separate to the pumpsets.
- Place frame on plastic or plywood and fill with concrete.
- Screed level and wipe excess from edge with rag. Remove any spillage from sides of frame.
- Inertia base is then allowed to cure. Lever the inertia base onto 20mm cleats/spacers on all 4 sides. Install Spring Mounts and then remove cleats.
- Pump-set can then be bolted on to base. Use grouting where necessary.

MASTERFLOW
SOLUTIONS

116 Carnarvon Street,
Silverwater, NSW, 2128

TEL: (02) 9748 2022

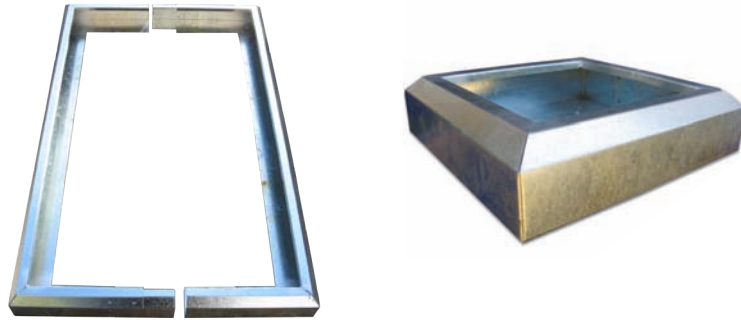
FAX: (02) 9748 2099

Email: sales@masterflow.net.au

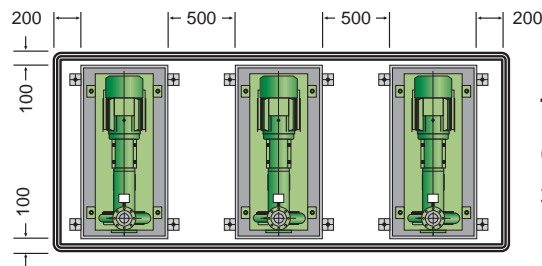
Website: www.masterflow.net.au

PLINTH SURROUNDS

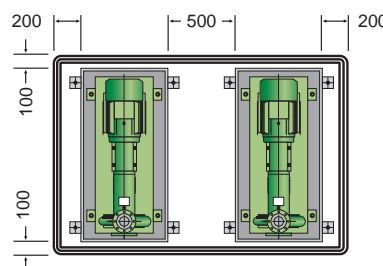
- House Keeping Slabs for pumps, chillers, heat exchangers, etc...
- Aesthetically pleasing with safety trip chamfer.
- Larger sizes supplied in kit form.
- Any size.
- 100mm high freeboard.
- Quick and Easy to order.



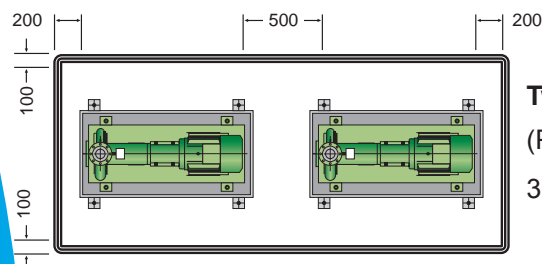
Typical sizes for some common pump layouts



Three pumps side by side
(Pumps on 'S' Inertia Bases)
3350mmL x 140mmW



Two pumps side by side
(Pumps on 'S' Inertia Bases)
2200mmL x 140mmW



Two pumps end to end
(Pumps on 'S' Inertia Bases)
3300mmL x 850mmW

MASTERFLOW
SOLUTIONS

116 Carnarvon Street,
Silverwater, NSW, 2128

TEL: (02) 9748 2022

FAX: (02) 9748 2099

Email: sales@masterflow.net.au

Website: www.masterflow.net.au

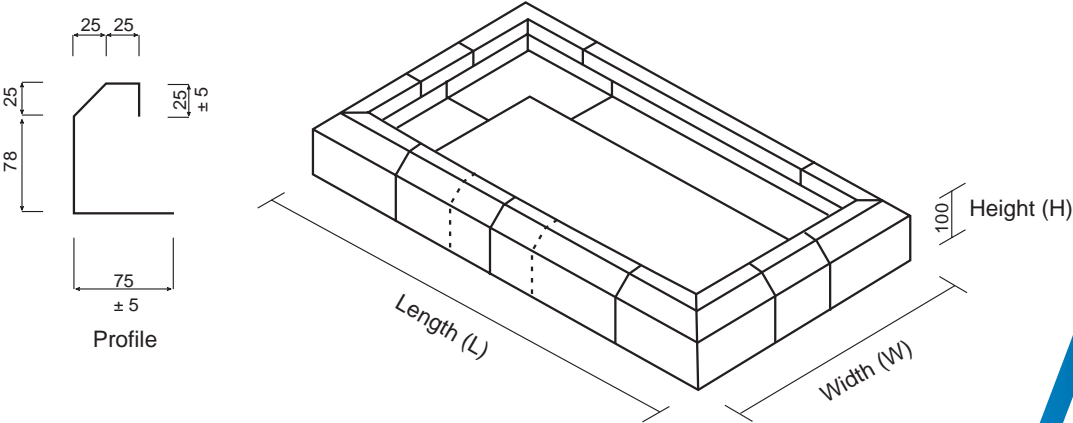
PLINTH SURROUNDS

REQUEST FOR QUOTATION / EXPRESS ORDER FORM

Send completed form to Masterflow Solutions by fax: (02) 9748 2099 or email: sales@masterflow.net.au

COMPANY DETAILS

Company _____ Date _____
 Contact _____ Mobile _____
 Position _____ Fax _____
 ABN _____ Email _____
 Purchase Order Number _____ Delivery Address _____
 Signature _____



Labelling Detail	Dimensions (mm)			Qty	Unit Price (Excl. GST)	Total Price (Excl. GST)
	L	W	H			
			100			
			100			
			100			
			100			
			100			
			100			
			100			
			100			
			100			
Delivery charge for all the above						

NOTE: Reinforcing steel mesh and concrete not supplied.



116 Carnarvon Street,
Silverwater, NSW, 2128

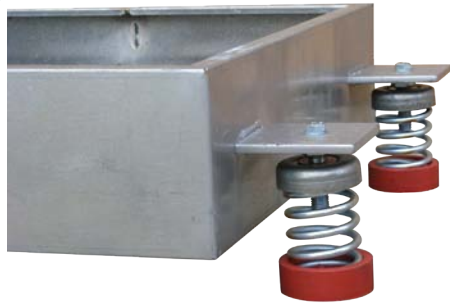
TEL: (02) 9748 2022

FAX: (02) 9748 2099

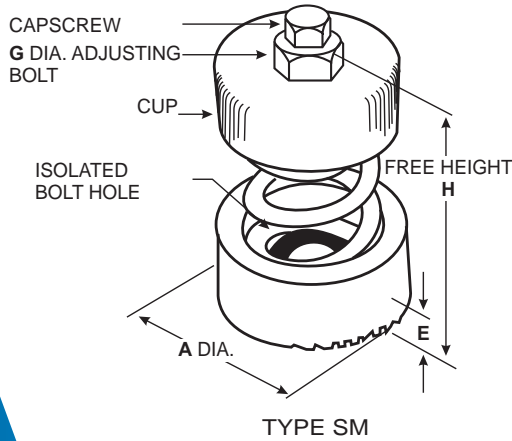
Email: sales@masterflow.net.au

Website: www.masterflow.net.au

SPRING MOUNTS TYPE SM



- Heavy-duty stable steel spring.
- Built-in levelling bolt with locking capscrew capable of compensating for full static deflection
- Separate top and bottom location cups.
- Rubber isolated bolt hole in base.
- Moulded noise-absorbing rubber base cup with non-skid surface.



25mm Deflection

Type	Max Load (kg)	Static DEFL. (kg)	Spring Const. (kg/mm)	Colours Stripe	Dimensions			
					A	E	G	H
SM-90	20	38	0.53	Violet	80	13	M16	127
SM-91	35	35	1.0	Violet				
SM-92	50	33	1.5	Yellow				
SM-93	100	33	3.0	Brown				
SM-94	150	30	5.0	Blue				
SM-95	200	30	6.7	Black	80	13	M16	132
SM-96	250	28	8.9	Red				
SM-97	300	28	10.7	Green				
SM-98	400	25	16.0	Grey	80	13	M16	138
SM-99	550	23	23.9	Orange				
SM-100	650	20	32.5	Orange				
SM-101	775	20	38.7	Orange	80	13	M16	146
SM-102	950	20	47.5	Orange				

- 50mm Deflection Springs are available on request.



116 Carnarvon Street,
Silverwater, NSW, 2128

TEL: (02) 9748 2022

FAX: (02) 9748 2099

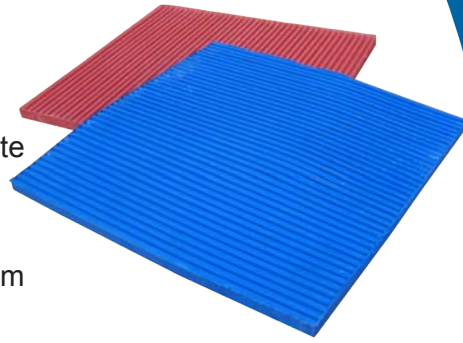
Email: sales@masterflow.net.au

Website: www.masterflow.net.au

ISOLATION PAD MOUNTINGS

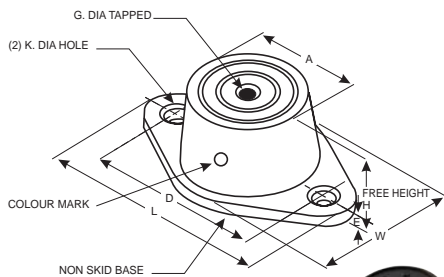
FEATURES

- For under chillers and heavy equipment.
- Manufactured from prime oil resistant elastomer.
- Unloaded thickness is 17mm.
- Cross ribbed, non-skid faces which usually eliminate the need for bolting down.
- Alternately raised ribs.
- May be used in multiple layers with steel or aluminium shim spacers to increase isolation efficiency.
- Three hardnesses available so that the best load/deflection characteristics can be selected for an application.



Colour	Size (mm)	Thickness (mm)	Load (kg)	Price (per sheet)
Blue	450 x 450	17	9,000	78.00
Red	450 x 450	17	13,000	78.00
Black	450 x 450	17	17,000	78.00

R.I.S. MOUNTS (Rubber In Shear)



FEATURES

- 5 to 12mm static deflection
- Threaded top insert
- Non-skid ribbed base
- Colour coded load ranges
- Corrosion resistant

Type	Colour	Max load (kg)	Static Deflection		Height H		G (mm)	Price \$
			NR (mm)	NRD (mm)	NR (mm)	NRD (mm)		
NR1	Blue White Red	17 25 40	5	8	28	35	M10	7.00
NRD 1	Green Grey	55 80						9.00
NR2	White Red	70 100	6	10	32	44	M10	13.00
NRD 2	Green Grey	160 250						15.00
NR3	White Red	145 200	6	12	44	72	M12	24.00
NRD 3	Green Grey	300 500						27.00

MASTERFLOW
SOLUTIONS

116 Carnarvon Street,
Silverwater, NSW, 2128

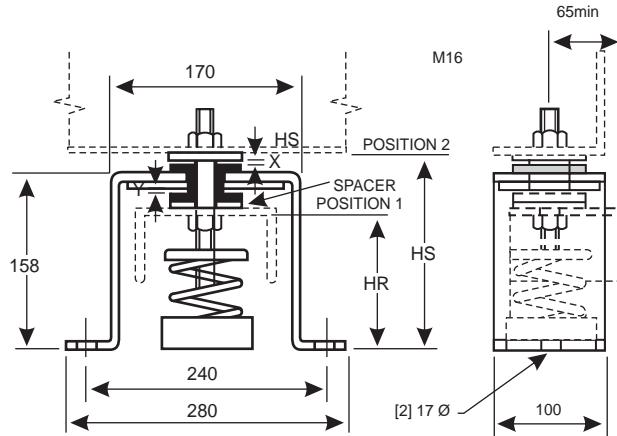
TEL: (02) 9748 2022

FAX: (02) 9748 2099

Email: sales@masterflow.net.au

Website: www.masterflow.net.au

SEISMIC MOUNTS TYPE CLM



LOADING DATA					
Type	Max Load (kg)	Static Deflection (kg)	Spring Const. (kg/mm)	Spring Colour Stripe	Price \$
SR-89	10	40	0.3	White	\$132.00
SR-90	20	38	0.5	Violet	
SR-91	35	35	1.0	Violet/Black	
SR-92	50	33	1.5	Yellow	
SR-93	100	33	3.0	Brown	
SR-94	150	30	5.0	Blue	
SR-95	200	30	6.7	Black	\$148.00
SR-96	250	28	8.9	Red	
SR-97	300	28	10.7	Green	
SR-98	400	25	16.0	Grey	
SR-99	550	23	23.9	Orange	
SR-100	650	20	32.5	Orange/Black	

OPERATING HEIGHTS		
Type	HR +/- 2mm	HS +/- 2mm
SR - 89 to 97	120	176
SR - 98 to 100	125*	176

* Remove spacer washer

FEATURES

- Heavy-duty stable steel spring.
- Acoustically isolating location cup.
- Single fully adjustable central vertical restraint and levelling bolt.
- Alternative equipment mounting positions.
- Restraint assembly can be retrofitted (See Installation Instructions)
- Replaceable shock absorbing rubber snubbers.
- Fully weather proofed.
- Designed & rated to the static force restraint requirements of AS 1170 & in all Australian seismic zones.

MASTERFLOW
SOLUTIONS

116 Carnarvon Street,
Silverwater, NSW, 2128

TEL: (02) 9748 2022

FAX: (02) 9748 2099

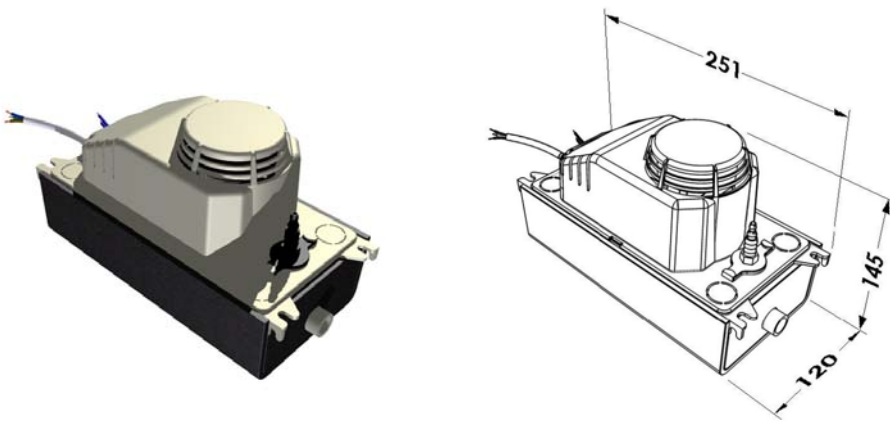
Email: sales@masterflow.net.au

Website: www.masterflow.net.au

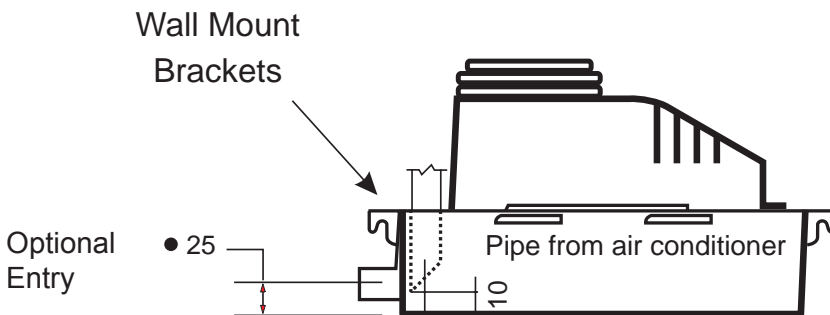
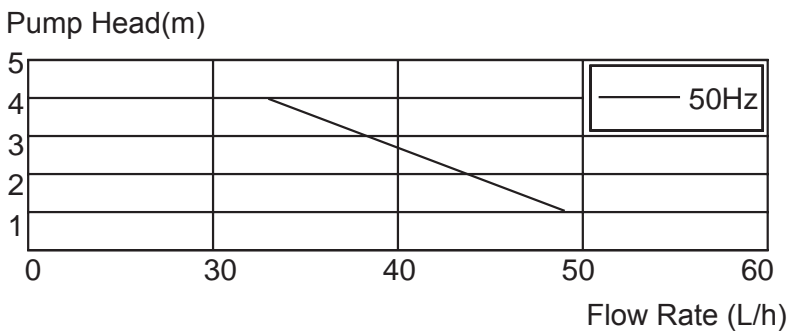
CONDENSATE PUMP

HOPPY

- Masterflow's best selling condensate pump.
- Low entry port (25mm height) ideal for those close to the ceiling drains.
- Insulated tank.
- Replaceable hose barb.
- Multiple inlets.
- 40litres /hour @2.8metres head.
- Safety switch to prevent overflowing (We recommend this to be connected to safeguard from water damage).
- Refer to our Condensate Brochure for the full range of pumps available.



PERFORMANCE CHART



MASTERFLOW
SOLUTIONS

116 Carnarvon Street,
Silverwater, NSW, 2128

TEL: (02) 9748 2022

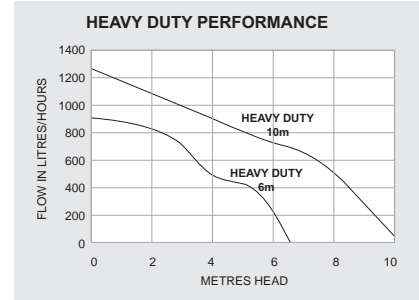
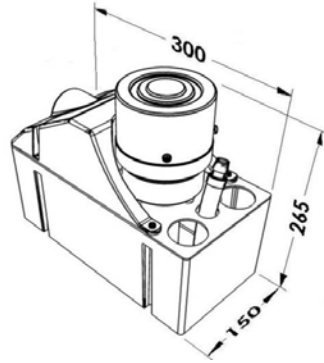
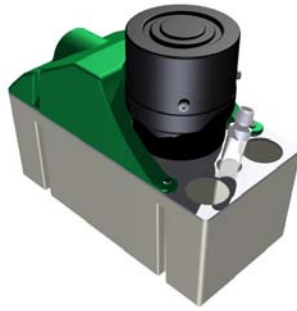
FAX: (02) 9748 2099

Email: sales@masterflow.net.au

Website: www.masterflow.net.au

BIG BOY

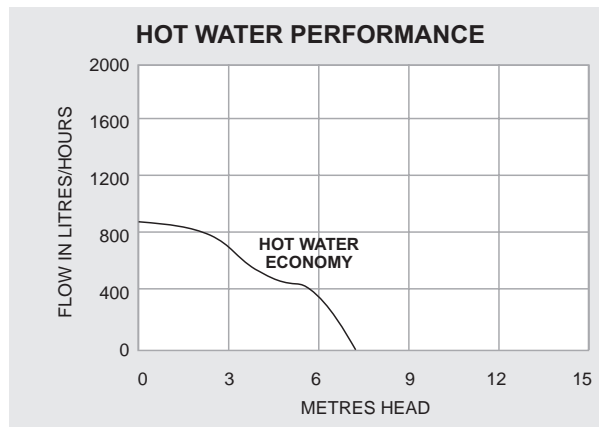
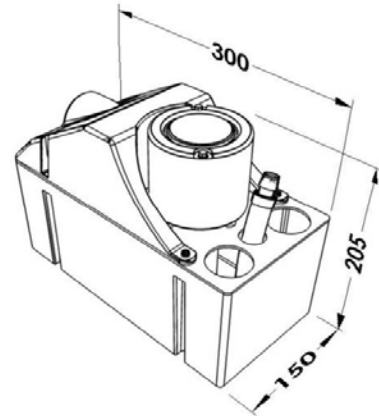
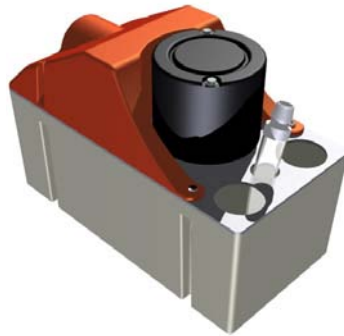
- Heavy duty - continuous rated.
- Massive flow rate - 1250L/hour @10metres head.
- 4 litre sump capacity.
- Great for high producing condensate units - 80kw and above.
- Choose from two models - 6M or 10M.



HOT WATER TANK PUMP

- High temperature.
- Ideal for use on humidifiers.
- 4 litre sump capacity.

Model	Price
HD 6	\$600.00
HD 10	\$630.00
Hot Water	\$595.00
Hoppy	\$230.00



116 Carnarvon Street,
Silverwater, NSW, 2128

TEL: (02) 9748 2022

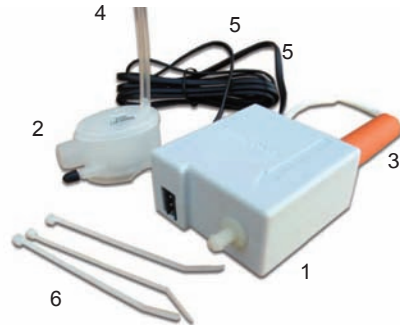
FAX: (02) 9748 2099

Email: sales@masterflow.net.au

Website: www.masterflow.net.au

MINI SERIES

- Designed to be installed above a false ceiling or behind wall-mounted evaporators.
- Three sizes available. 4 LPH @ 4 MH; 10 LPH @ 9MH; 15LPH @ 20 MH
- Suction lift up to 1metre.
- Sump can be mounted in tray of unit with pump mounted remotely.

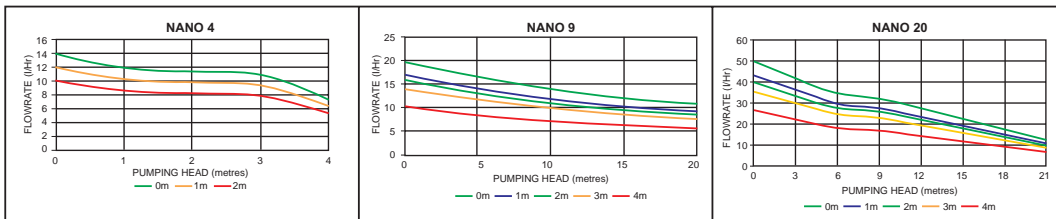


KIT CONTENTS

1. Pump
2. Sump & Floats Meters
3. Inlet Tube
4. Breath - Tube
5. Pump Cable
6. Cable Ties

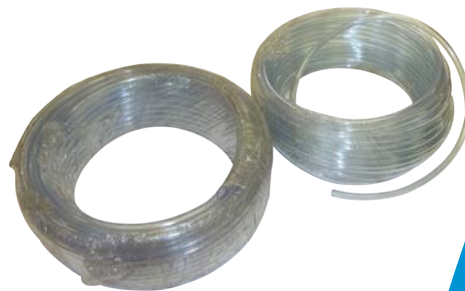
Model	Flow	Price
N4	4	\$212.00
N9	10	\$230.00
N20	15	\$250.00

PERFORMANCE FLOW CHARTS



TUBING

- Clear vinyl
- Can be used with condensate pumps
- Suitable for low pressure delivery lines, syphon lines and drainage lines.
- Sizes from 3mm to 25mm
- Available in Coils only



Part No	ID (mm)	OD (mm)	Coil lengths (M)	Price per M (Excl. GST)
CVT3	3.0	5.0	30 or 100	\$0.24
CVT5	5.0	8.0	30 or 100	\$0.36
CVT6	6.0	9.0	30 or 100	\$0.44
CVT8	8.0	11.0	30 or 100	\$0.55
CVT10	10.0	13.0	30 or 100	\$0.68
CVT12	12.0	15.0	30 or 100	\$0.87
CVT16	16.0	19.0	30	\$1.12
CVT20	20.0	24.0	30	\$1.71
CVT25	25.0	30.0	30	\$2.79

MASTERFLOW
SOLUTIONS

116 Carnarvon Street,
Silverwater, NSW, 2128

TEL: (02) 9748 2022

FAX: (02) 9748 2099

Email: sales@masterflow.net.au

Website: www.masterflow.net.au

FLEXIBLE STAINLESS CONNECTORS

- Stainless braided construction
- Choice of flange drilling
- 150mm standard length
- Custom builds on request
- Price on request



Equal Flanged Bellows - Table E/ Table E OR Table E/Din 16



Model	Type	Size	Press rating	Price Each (Excl. GST)	
				DIN	T/E
	Neoprene Rubber -10°C to 105°C range Plated Steel Flanges BS4504 PN16 Drilled	32 mm	10 Bar	38	38
		40 mm	10 Bar	38	38
		50 mm	10 Bar	44	44
		65 mm	10 Bar	46	48
		80 mm	10 Bar	60	62
		100 mm	10 Bar	76	79
		125 mm	10 Bar	90	90
		150 mm	10 Bar	120	126
		200 mm	10 Bar	168	172

Flanged Reducing Bellows

Available in Limited Sizes. Enquire with sales office

WAFER CHECK VALVE

- Dual plate BS10 Table 'E'.
- BODY : Cast Iron
- PLATE : Stainless Steel
- SEAT : Buna-N Rubber
- SPRING: Stainless Steel.



Part No.	Size (Inch)	Size (mm)	Price Each (Excl. GST)
WCV50	2	50	\$58.00
WCV65	2 ½	65	\$69.00
WCV80	3	80	\$88.00
WCV100	4	100	\$120.00
WCV125	5	125	\$151.00
WCV150	6	150	\$208.00
WCV200	8	200	\$344.00
WCV250	10	250	\$537.00
WCV300	12	300	\$567.00
WCV350	14	350	\$894.00
WCV400	16	400	\$1378.00

Y STRAINER CAST IRON FLANGED

Part No.	Size (Inch)	Size (mm)	Price Each (Excl. GST)
BYS50	2	50	\$112.00
BYS65	2 ½	65	\$175.00
BYS80	3	80	\$192.00
BYS100	4	100	\$285.00
BYS150	6	150	\$409.00
BYS200	8	200	\$841.00
BY125	5	125	\$221.00
BY250	10	250	\$790.00
BY300	12	300	\$900.00



MASTERFLOW
SOLUTIONS

116 Carnarvon Street,
Silverwater, NSW, 2128

TEL: (02) 9748 2022

FAX: (02) 9748 2099

Email: sales@masterflow.net.au

Website: www.masterflow.net.au

PIPELINE ACCESSORIES

BUTTERFLY VALVES

- 16 bar rated
- EPDM liner
- Cast iron body
- Stainless Steel disc



Part No.	Size (Inch)	Size (mm)	Price Each (Excl. GST)
50	2	50	
65	2½	65	
80	3	80	
100	4	100	
125	5	125	
150	6	150	
200	8	200	
250	10	250	
300	12	300	
350	14	350	
400	16	400	

LUGGED BUTTERFLY VALVES

- 16 bar rated
- EPDM liner
- Cast iron body
- Stainless Steel disc



Part No.	Size (Inch)	Size (mm)	Price Each (Excl. GST)
50	2	50	
65	2½	65	
80	3	80	
100	4	100	
125	5	125	
150	6	150	
200	8	200	
250	10	250	
300	12	300	
350	14	350	
400	16	400	

MASTERFLOW
SOLUTIONS

116 Carnarvon Street,
Silverwater, NSW, 2128

TEL: (02) 9748 2022

FAX: (02) 9748 2099

Email: sales@masterflow.net.au

Website: www.masterflow.net.au

GAUGES - PRESSURE & VACUUM

- Dual scale (KPA / PSI)
- Liquid filled
- Accurate reading
- Stainless steel case
- Robust Construction



63MM DIAL FACE LIQUID FILLED PRESSURE GAUGE STAINLESS STEEL CASE, LOWER MOUNT, 1/4" BSP/T, DUAL SCALE (PSI/KPA)

Pressure Range (PSI)	Part No.	Price Each (Excl. GST)
0-100	PG25GLM100	\$38.45
0-160	PG25GLM160	\$38.45
0-230	PG25GLM230	\$38.45
0-300	PG25GLM300	\$38.45
0-600	PG25GLM600	\$38.45
0-1000	PG25GLM1000	\$40.45
0-2000	PG25GLM2000	\$40.45
0-3000	PG25GLM3000	\$40.45

100MM DIAL FACE LIQUID FILLED PRESSURE GAUGE STAINLESS STEEL CASE, LOWERMOUNT, 3/8" BSP/T, DUAL SCALE (PSI/KPA)

Pressure Range (PSI)	Part No.	Price Each (Excl. GST)
0-60	PG4GLM60	\$132.30
0-100	PG4GLM100	\$132.30
0-160	PG4GLM160	\$132.30
0-230	PG4GLM230	\$132.30
0-400	PG4GLM400	\$132.30
0-600	PG4GLM600	\$132.30
0-1000	PG4GLM1000	\$132.30
0-2000	PG4GLM2000	\$132.30

100MM FACE LIQUID FILLED PRESSURE GAUGE STAINLESS STEEL CASE, LOWERMOUNT, 3/8" BSP/T, DUAL SCALE (KPA - HG)

Vacuum Range	Part No.	Price Each (Excl. GST)
0 - 30 hg	VG100	\$113.85



116 Carnarvon Street,
Silverwater, NSW, 2128

TEL: (02) 9748 2022

FAX: (02) 9748 2099

Email: sales@masterflow.net.au

Website: www.masterflow.net.au

CYCLONE SEPARATORS

- Simple & effective
- Mounted Vertically
- ½NPT ports
- Suitable for chilled & condenser water
- “filters” & flushes seal faces



GAUGE TEST POINTS



- Or “Binder” point
- Brass construction
- Knurled cap
- Plastic restraining strap

RELIEF VALVES

- Bronze or stainless construction
- ½”-4” (12-100MM)
- BSP threaded connection
- Stainless spring
- Pre-set to desired pressure



HIGH CAPACITY AUTO AIRVENT



- Huge chamber
- Large port connection
- Fast removal of air
- Leak proof operation
- Reliable air inlet during draining



ITEM	PART NO	PRICE (Exl GST)
Cyclone Separator	MCS-12	\$235.00
Test Point	GTP-10	\$7.00
Relief Valve	SRV 12	\$88.00
Relief Valve	SRV 20	\$176.00
Relief Valve	SRV 25	\$196.00
Relief Valve	SRV 32	\$238.00
Relief Valve	SRV 40	\$296.00
Relief Valve	SRV 50	\$360.00
Auto Airvent	AAHQ12	\$285.00

MASTERFLOW
SOLUTIONS

116 Carnarvon Street,
Silverwater, NSW, 2128

TEL: (02) 9748 2022

FAX: (02) 9748 2099

Email: sales@masterflow.net.au

Website: www.masterflow.net.au

FLANGE GASKETS

- Rubber Insertion -1.6mm 0
- Table E and Din 16
- 25mm to 250mm
- Ex-Stock!

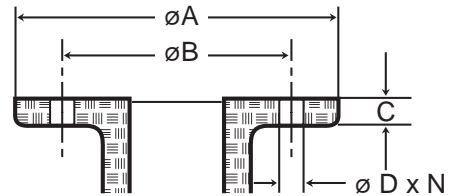
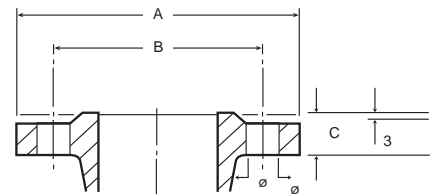


TABLE E FLANGE TABLE

NOMINAL FLANGE SIZE		32	40	50	65	80	100	125	150	200	250
FLANGE DIAMETER	A	140	150	165	185	200	220	250	285	340	405
HOLE P.C.D.	B	87	98	114	127	146	178	210	235	292	356
FLANGE THICKNESS	C	18	18	20	20	22	24	26	26	30	32
HOLE DIAMETER	D	14	14	18	18	18	18	18	22	22	22
NUMBER OF HOLES	N	4	4	4	4	4	8	8	8	8	12

Note : 1. Holes machined off centrelines.
2. Flange drilling as shown above conforms to AS2129-1982 Table 'E' cast iron flanges.



DIN 16 FLANGE TABLE

NOMINAL FLANGE SIZE		32	40	50	65	80	100	125	150	200	250
FLANGE Ø	A	140	150	165	200	200	220	250	285	340	405
HOLE P.C.D.	B	100	110	125	160	160	180	210	240	295	355
FLANGE THICKNESS	C	18	18	20	22	22	24	26	26	30	32
HOLE DIAMETER	D	18	18	18	18	18	18	18	22	22	27
NUMBER OF HOLES	N	4	4	4	8	2	8	8	8	12	12

Note : 1. Holes machined off centrelines.
2. Flange drilling as shown above conforms to DIN 2533 DIN 16 cast iron flanges.



116 Carnarvon Street,
Silverwater, NSW, 2128

TEL: (02) 9748 2022

FAX: (02) 9748 2099

Email: sales@masterflow.net.au

Website: www.masterflow.net.au

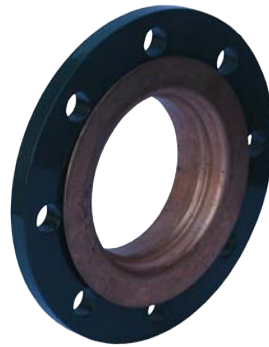
FLANGE GASKETS-HT

- Fibre gasket 1.5mm
- High Temperature
- Table E and Din 16
- 25mm & 250mm
- Extra thickness available.

Pipe Size	Type	Price
32	Din 16 of Table D/E-Please Specify at time of order NB- Table D = 4 Holes Table E = 8 Holes	13.50
40		14.50
50		15.50
65		16.50
80		18.50
100		19.50
125		23.00
150		26.00
200		35.50
250		54.00

Cop-a-mate

Pipe Size	Type	Price
40	Table D - 4hole	19.00
50	Table D - 4hole	19.50
65	Table E - 8hole	22.00
80	Table E - 8hole	31.50
100	Table E - 8hole	39.00
125	Table E - 8hole	60.00
150	Table E - 8hole	65.00
200	Table E - 8hole	100.00
250	Table E - 8hole	114.00
300	Table E - 8hole	P.D.A.



Other Flanges

- Table D&E Blind-Carbon & Stainless
- Table C,D,E & H Slip-on Steel
- Table D&E Screwed Stainless& Carbon Steel
- ANSI & DIN

Braided Hose Connector

Item Description	Price
1/2" x 450mm Flexible Hose Gas	14.00
1/2" x 600mm Flexible Hose Gas	13.00
1/2" x 900mm Flexible Hose Gas	15.00
1/2" x 1000mm Flexible Hose Gas	18.00
3/4" x 450mm Flexible Hose Gas	32.00
3/4" x 600mm Flexible Hose Gas	34.00
3/4" x 900mm Flexible Hose Gas	46.00
3/4" x 1000mm Flexible Hose Gas	51.00
1/2" F/F x 225mm Flexible Hose-Water	5.50
1/2" F/F x 300mm Flexible Hose-Water	6.00
1/2" F/F x 450mm Flexible Hose-Water	7.00
1/2" F/F x 600mm Flexible Hose-Water	9.00



MASTERFLOW
SOLUTIONS

116 Carnarvon Street,
Silverwater, NSW, 2128

TEL: (02) 9748 2022

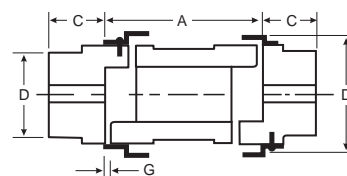
FAX: (02) 9748 2099

Email: sales@masterflow.net.au

Website: www.masterflow.net.au

SPACER COUPLING - RRS TYPE

- Simple construction - enabling quick and easy installation. No special tools required.
- Flexible rubber spider caters to incidental angular, parallel and axial misalignments which occur between two rotating shafts.
- Worn out rubber spider can be replaced without disturbing the driving or the driven units by simply removing the metal ring aside.
- The RRS type Couplings come with standard spacer lengths or DBSE (Distance Between Shaft Ends) of 100, 140 & 180mm.



Size	RRS Hub	RRS/100* Spacer Only	RRS/140 Spacer Only	Snap Wrap Kit	Complete RRS/140 Coupling
095	\$15.25	\$57.95	\$95.40	\$21.95	\$147.80
100	\$26.30	\$88.90	\$110.15	\$25.95	\$188.65
110	\$38.65	\$130.80	\$161.20	\$30.50	\$268.95
150	\$49.10	\$170.40	\$190.80	\$34.80	\$325.20
190	\$75.95	\$216.45	\$245.00	\$50.05	\$448.60
225	\$88.90	\$240.00	\$330.20	\$67.20	\$576.00
226	\$105.60	N/A	\$364.80	\$75.35	\$652.80

DIMENSIONS / SELECTION DATA

Size	kW at 100 RPM	Bore (mm)		Distance between shafts end A	Dimensions (mm)			
		Min.	Max.		B	C	D	G
RRS - 095	0.21	15	23	100/140/1	64	25	54	2
RRS - 100	0.50	20	38	100/140/1	77	35	65	2
RRS - 110	0.92	20	42	100/140/1	95	42	76	3
RRS - 150	1.50	30	48	100/140/1	110	45	80	3
RRS - 190	2.02	35	55	100/140/1	128	54	102	3
RRS - 225	2.75	40	60	100/140/1	141	64	108	3
RRS - 226	3.40	40	70	100/140/1	153	70	115	3



MASTERFLOW
SOLUTIONS

116 Carnarvon Street,
Silverwater, NSW, 2128

TEL: (02) 9748 2022

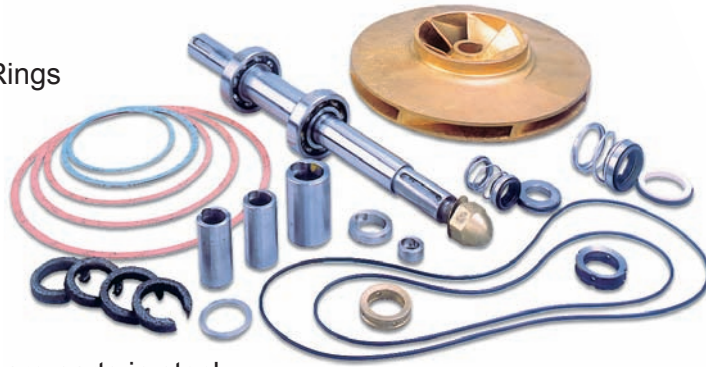
FAX: (02) 9748 2099

Email: sales@masterflow.net.au

Website: www.masterflow.net.au

SPARES FOR ALL MAJOR PUMP BRANDS

- Mechanical Seals
- Bearings
- Casing & Gaskets "O" Rings
- Shafts
- Impellers
- Gland Packing
- Sleeves
- Gland Followers



We keep a large range of spare parts in stock to suit many pump brands. Please call with your inquiry.

COUPLING RUBBERS

- HRC elements
- Spider
- Pin & Bush
- For Snap Wrap type refer to Page 24

HRC ELEMENTS	
Part No.	Price Each (Excl. GST)
HRC 70	\$7.00
HRC 90	\$9.00
HRC 110	\$14.50
HRC 150	\$26.00
HRC 180	\$44.00
HRC 230	\$78.00



SPIDER ELEMENTS	
Part No.	Price Each (Excl. GST)
L110	\$12.00
L150	\$17.00
L190	\$24.00
L225	\$32.00
L226	\$55.00



PIN and BUSH			
Part No.	OD x ID	Price Each* Pin & Bush	Price Each (Rubber)
GC ¾	23x10	\$6.00	\$1.40
CG 1	28x12.5	\$10.00	\$1.50
GC 1¾	37.5x17	\$13.00	\$1.80
GC 2¾	50x25	\$42.70	\$1.95



* Pin and Bush sets are supplied assembled.

MASTERFLOW
SOLUTIONS

116 Carnarvon Street,
Silverwater, NSW, 2128

TEL: (02) 9748 2022

FAX: (02) 9748 2099

Email: sales@masterflow.net.au

Website: www.masterflow.net.au

ELECTRIC MOTORS

- 2 Pole & 4 Pole
- Foot mount, T.E.F.C.
- MEPS compliant - AS1359.5:2004
- Smaller sizes available in aluminium
- Flange mount also available



2 POLE ELECTRIC MOTORS

Size (kw)	Frame Size	Shaft (mm)	Centre Height (mm)	F.L.C. (Amps)	dBs	Weight (KG)		Price Each (Excl. GST)	
						C.I.	AL	C.I.	AL
0.75	80	19	80	1.56	59	18	14	168	196
1.1	80	19	80	2.25	59	20	14.5	180	220
1.5	90S	24	90	2.92	65	25	20	207	238
2.2	90L	24	90	4.2	65	29	31	242	272
3.0	100L	28	100	5.53	68	39	33	294	325
4.0	112M	28	112	7.22	69	50	41.5	330	355
5.5	132S	38	132	9.80	72	69	60.5	423	453
7.5	132S	38	132	13.20	72	75	66.5	481	505
11.0	160M	42	160	19.00	78	120	N/A	1061	-
15.0	160M	42	160	25.60	78	128	N/A	1198	-
18.5	160L	42	160	31.50	78	142	N/A	1460	-
22.0	180L	48	180	36.90	81	176	N/A	P.O.A.	-
30.0	200L	55	200	49.9	84	250	N/A	P.O.A.	-
37.0	200L	55	200	61.3	84	258	N/A	P.O.A.	-
45.0	225M	55	225	74.2	84	336	N/A	P.O.A.	-
55.0	250M	55	250	90.4	85	434	N/A	P.O.A.	-

4 POLE ELECTRIC MOTORS

Size (kw)	Frame Size	Shaft (mm)	Centre Height (mm)	F.L.C. (Amps)	dBs	Weight (KG)		C.I. Price Each (Excl. GST)	
						C.I.	AL	C.I.	AL
0.75	80	19	80	1.7	50	21	16	170	198
1.1	90S	24	90	2.37	53	26	25	190	230
1.5	90L	24	90	3.19	53	31	24	228	248
2.2	100L	28	100	4.38	56	40	40	266	278
3.0	100L	28	100	5.90	56	44	N/A	298	325
4.0	112M	28	112	7.68	57	58	45.7	378	398
5.5	132S	38	132	10.3	63	70	65	495	515
7.5	132S	38	132	13.80	63	90	80	577	577
11.0	160M	42	160	19.80	67	122	N/A	826	-
15.0	160M	42	160	26.70	67	146	N/A	1070	-
18.5	160L	48	180	32.50	68	179	N/A	1525	-
22.0	180L	48	180	38.50	68	206	N/A	P.O.A.	-
30.0	200L	55	200	52.1	71	255	N/A	P.O.A.	-
45.0	225M	55	225	76.6	73	342	N/A	P.O.A.	-
55.0	250M	55	250	93.4	75	428	N/A	P.O.A.	-

- Always check availability.
- Above pricing is a guide only and is for standard IP55 which is suitable for indoor plantroom location, For outdoor installation, IP56 weatherproof protection is recommended and will incur additional costs.
- Delivery and GST is NOT included in above prices.
- Weight and F.L.C. can vary slightly between different brand motors.



116 Carnarvon Street,
Silverwater, NSW, 2128

TEL: (02) 9748 2022

FAX: (02) 9748 2099

Email: sales@masterflow.net.au

Website: www.masterflow.net.au

AUTOMATIC AIR VENT

- Multiple features providing the ultimate in reliability
- Not to be compared with anything else
- Individually tested

In the very unlikely event of a leaking venting mechanism this fluorescent, self tightening screw will prove to be extremely useful to temporarily stop the dripping AND VISIBLY SIGNAL the defect'

Extremely large, semi-conical air chamber:

- assuring highest reliability since exploding bubbles cause only minimal float movement
- Even if the pressure increases 10 fold the water level is unable to reach the venting mechanism

Widest possible base shape, allowing dirt to deposit out of the bubble turbulence area

Largest possible internal entry diameter: reduced risk on capillary blocking by a stagnant bubble (3/8" is a compromise, minimum 1/2" is recommended)

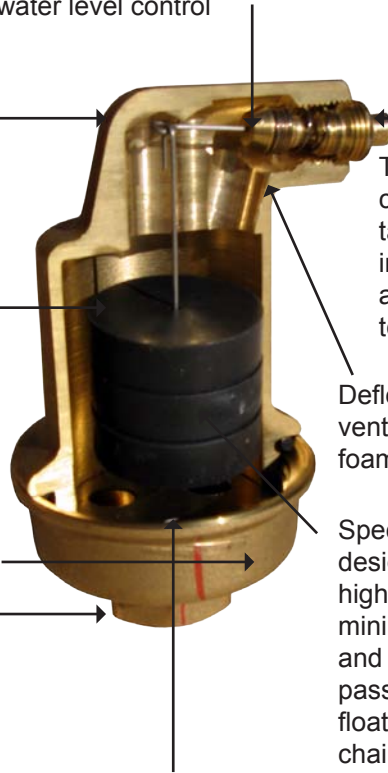
Precision valve with long arm modulating venting mechanism assuring most precise water level control

T-shaped evacuation channel prevents tampering with the internal valve mechanism and allowing condensate to breathe away

Deflector to protect the venting mechanism from foam or spray

Special float design assuring highest stability, minimal vibration and optimal bubble passage, non rigid float suspension chain

Abaffle plate with three large sideholes reduces turbulence in the upper part



116 Carnarvon Street,
Silverwater, NSW, 2128

TEL: (02) 9748 2022

FAX: (02) 9748 2099

Email: sales@masterflow.net.au

Website: www.masterflow.net.au

AIR & DIRT SEPARATORS (OPTIVENT)

'Optivent' Air & Dirt Separators provide a solution to all air-related problems, and at the same time separates the dirt out of systems down to 10 micron! This results In:

- lower energy consumption (up to 10% electricity savings!)
- reduced water treatment costs
- reduced faults and maintenance
- reduced noise, no more gurgling sounds
- better heat transfer
- improved water quality
- maximum pressure loss of 10kPa
- improved system efficiency
- extended component life... the benefits are endless!

Optivent

*I don't have air or dirt...
...in the system...do I ?*

WHEN YOU NEED

- A must in every new installation and existing buildings. Admitt your system is very clean and no need for an Optivent? Consider again what is happening inside your system that you don't know about!
- Contact Masterflow engineering team for further assistance. For existing installations, you can book in for a free site inspection.
- New installations - provide necessary information and schematics for correct sizing of units.

WHO WILL WIN

- The **owner** because he has an efficient, cost effective system and extends the life of his overall equipment.
- The **consultant** because he has exceeded the clients expectations.
- The **contractor** wins because he saves time commissioning the system as he no longer has the headaches associated with bleeding the air from the system. He also may reduce the losses from flushing where applicable.
- The **environment**.



MASTERFLOW
SOLUTIONS

116 Carnarvon Street,
Silverwater, NSW, 2128

TEL: (02) 9748 2022

FAX: (02) 9748 2099

Email: sales@masterflow.net.au

Website: www.masterflow.net.au

Optivent Air & Dirt Separator provides a solution to all air-related problems, and at the same time separate the dirt out of systems down to 10 micron! This results In:

- lower energy consumption (5-10% electricity savings!)
- reduced water treatment costs
- reduced faults and maintenance
- reduced noise, no more gurgling sounds
- better heat transfer
- improved water quality
- maximum pressure loss of 10kPa
- improved system efficiency
- extended component life... the benefits are endless!

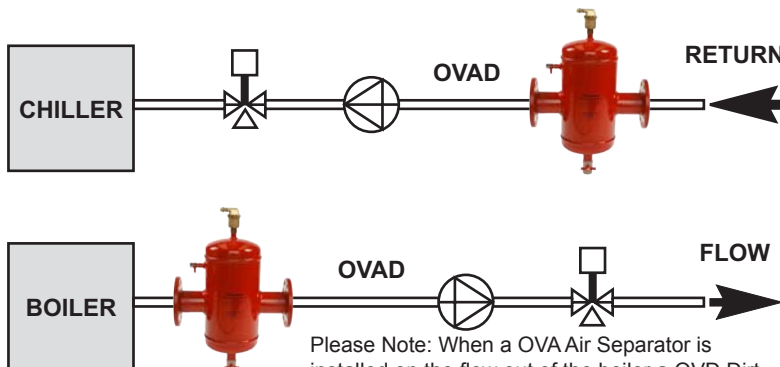


For more information refer to our complete OPTIVENT brochure

Dimensions

MODEL NUMBER	Connection Size (DN)	Standard Type (1.5m/s)				High-flow (3m/s)			
		F (mm)	H (mm)	H (mm) Demountable	Optimum Flow (m ³ /hr)	F (mm)	H (mm)	H (mm) Demountable	Optimum Flow (m ³ /hr)
OVAD050	050	350	590	670	10.6	460	740	840	21.2
OVAD065	065	350	590	670	17.9	460	740	840	35.8
OVAD080	080	460	740	840	27.1	630	960	1040	54.3
OVAD100	100	460	740	840	42.4	630	960	1070	84.8
OVAD125	125	630	960	1040	66.3	810	1130	1230	132.5
OVAD150	150	630	960	1040	95.4	810	1130	1230	190.8
OVAD200	200	810	1130	1230	169.6	880	1410	1460	339.3
OVAD250	250	880	1410	1460	265	1100	1780	1895	530.1
OVAD300	300	1100	1780	1895	381.7	1100	1790	1905	763.4
OVAD350	350	1100	1790	1905	519.5	1250	2030	2175	1039
OVAD400	400	1250	2030	2175	678.6	1250	2030	2175	1357
OVAD450	450	1250	2030	2175	858.8	1800	2030	2630	1717.6

Some Suggested Installation Methods



Please Note: When a OVA Air Separator is installed on the flow out of the boiler a OVD Dirt Separator should also be installed on the return to the boiler.



116 Carnarvon Street,
Silverwater, NSW, 2128

TEL: (02) 9748 2022

FAX: (02) 9748 2099

Email: sales@masterflow.net.au

Website: www.masterflow.net.au

FLOWCON VALVES

- Automatic balancing
- Suitable for FCUs & AHUs
- High flow series also available (chillers)
- Australian Distributors
- Ring us for project pricing and selection



FLOWCON A/AB/ABV

- Externally adjustable
- Automatic balancing
- Dynamic balancing
- Fewer total valves required
- Available sizes 15-40mm



FLOWCON SH

- Automatic flow control
- Easy flow rate setting selection
- Externally adjustable
- Tamper Proof
- Available sizes 15-150mm

FLOWCON SME

- Temperature control & Balancing
- Externally adjustable
- Automatic balancing
- Dynamic balancing
- Available sizes- 15/20/25mm



116 Carnarvon Street,
Silverwater, NSW, 2128

TEL: (02) 9748 2022

FAX: (02) 9748 2099

Email: sales@masterflow.net.au

Website: www.masterflow.net.au

Other Products available from Masterflow:



Long-Coupled Pumpsets



Close-Coupled Motor-pumps



Vertical Inline Motor-Pumps



Buffer Tanks & Storage Tanks



Special Purpose Tanks
(eg. Glycol Tanks)



Filtration Products



Special Purpose Pumps
(High Pressure / High Temperature)

COMING SOON
SUCTION DIFFUSERS

Tel: (02) 9748 2022

Fax: (02) 9748 2099

Email: sales@masterflow.net.au

Website: www.masterflow.net.au



Product Index

A		M	
Air Release Valves	{7,21,27}	Modulating Valves	{30}
Air & Dirt Separators	{28}	Motors	{26}
Automatic Refill Units	{6}	O	
B		Open Expansion Tanks	{5}
Balancing Valves {30}		P	
Bellows	{18}	Plinth Surrounds	{10-11}
Binder Points	{21}	Pressurization Units	{6}
Brackets (Expansion Tanks)	{4}	Pressure Differential Valves	{30}
Braided Connectors	{18}	Pressure Gauges	{20}
Butterfly Valves	{19}	Pressure Reducing Valves	{7}
C		Pump Spares	{25}
Cabinets-RPZ {7}		Q	
Calorifiers	POA	Quick-Fill Kit	{7}
C'flex	{18}	R	
Check Valves-Wafer	{18}	Refill Units	{6}
Chemical Pots	{8}	Relief Valves	{21}
Clear Vinyl Tubing	{17}	RPZ Valves & Cabinets	{7}
Compound Gauges	{20}	Rubber In Shear Mounts	{13}
Condensate Pumps	{15}	Rubber Insertion Gaskets	{22}
Cone Ring Rubbers	{25}	Rubber Pads	{13}
Cop-a-mate Flanges	{23}	S	
Coupling Rubbers	{25}	Safety Valves	{21}
Cyclone Separators	{21}	Seismic Springs	{14}
D		Shearflex Rubber	{13}
Differential Pressure Valves	{30}	Snap Wraps	{24}
Dosing Pots	{8}	Spacer Couplings	{24}
E		Spare Parts	{25}
Electric Motors	{26}	Spring Mounts	{12}
Expansion Vessels	{4}	Suction Diffusers	{31}
F		T	
Feed & Expansion Tanks	{5}	Tubing	{17}
Flange Gaskets	{22}	V	
Flowcon Valves	{30}	Vacuum Gauges	{20}
G		Vibration Mounts	{12}
Gaskets		W	
Gauges-Pressure	{20}	wafer check valves	{18}
Gauges-Vacuum	{20}	Y	
Glycol Tanks	{31}	Y-Strainers	{18}
I		L	
Inertia Bases	{9}	Lugged Butterfly Valves	{19}
Isolation Pad Mountings	{13}		