

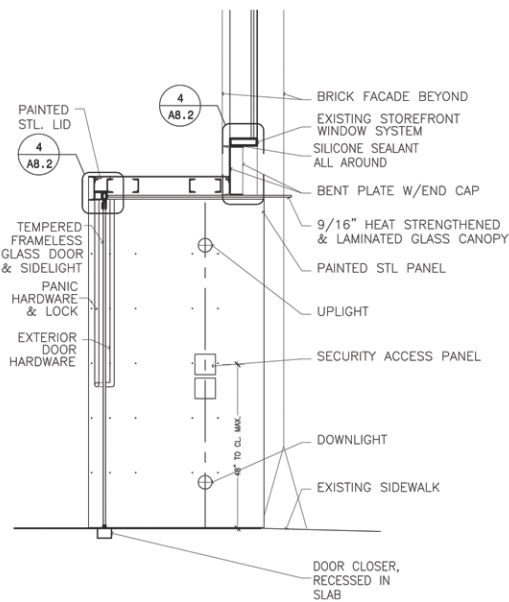
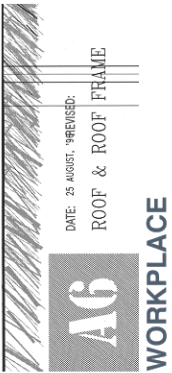
PROJECTS

CHRONICLE BOOKS HEADQUARTERS

San Francisco, CA

Having purchased a former warehouse building near South Park neighborhood, this publishing company was eager to occupy the space. A complete interior renovation including ADA access, showers, custom private and open office spaces, podcast recording rooms and conference spaces was designed to take advantage of the existing building's passive and active sustainable qualities. Departing from the average architectural services, our team worked with local furniture designers and manufacturers to achieve a high-quality, healthy place to work.

(Schematic Design through Construction Document Detailing)



ENLARGED ELEVATION OF PROPOSED ENTRY
1/4" = 1'-0" ②

