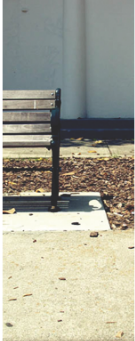


# PROJECTS



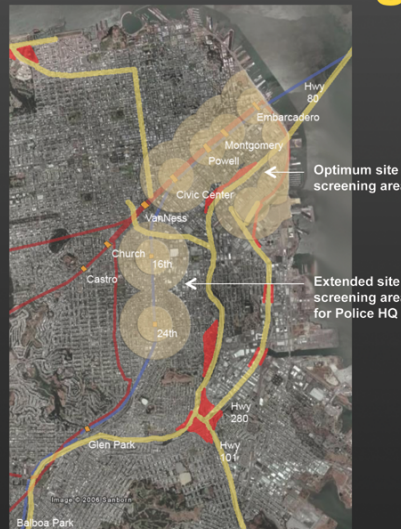
CIVIC / CULTURAL

## SF MoMA Sculpture Garden Competition San Francisco, CA

Partnering with HOK, we were asked to provide assistance in overall project management, real estate analysis, and needs assessment for the San Francisco Courts, Police Department, and Jail system. The City's goal was to collocate agencies for efficiency and enhanced public service.

(Real Estate Analysis - Underutilized Parcel Identification)

## Site Screening – Access



**All- Transit & car access**  
**Court - Public transit access**  
**Police - Response access**

## Site Screening HOJ Area



Parcel	Size (Acre)	Observed Land Use	Address	Owner
HOJ	4.86	Current HOJ	425 7 <sup>th</sup> St	City
1 a&d	0.509	Commercial	814 Bryant St	LIN Trust
1 b	0.132	Commercial	444 6 <sup>th</sup> St	Chung Trust
1 c	0.135	Parking	450 6 <sup>th</sup> St	Stella Arnold Exempt Trust
1 e	0.043	McDonald's	820 Bryant St	Private Owner
1 f	0.162	SFPD	498 6 <sup>th</sup> St	SFPD
<b>1 Total:</b>	<b>0.981</b>			
2 a	1.87	Flower Market	575 6 <sup>th</sup> St	SF Flower Growers Association
2 b&c	2.803	Flower Market	630 & 530 Brannan St	California Flower Market
2 d&e	1.729	Flower Market	628 Brannan St	Private Owner
<b>2 Total:</b>	<b>6.402</b>			
14	3.466	SEGA H.Q.	699 8 <sup>th</sup> St	Zoro LLC
27	1.739	Warehouse	550 Townsend St	Private Owner
32	3.325	Bus Parking	350 8 <sup>th</sup> St	Werbert Properties
33	1.72	Auto Shop	1144 Harrison St	MHM Properties