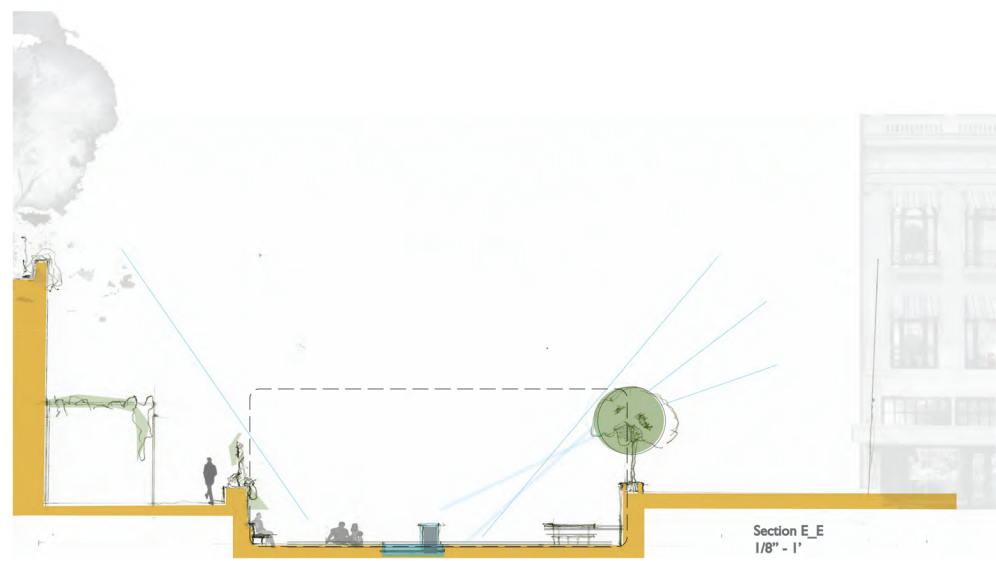


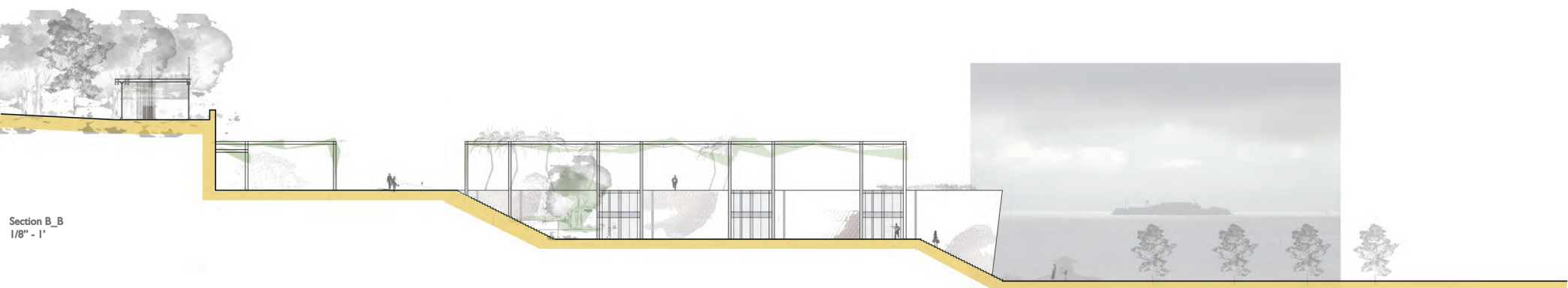
**Section C\_C**  
1/8" - 1'  
The site is entered from the South along the busy thoroughfare Van Ness Avenue. A double row of trees help to define the sense of place as well as act as a buffer from the noise pollution.



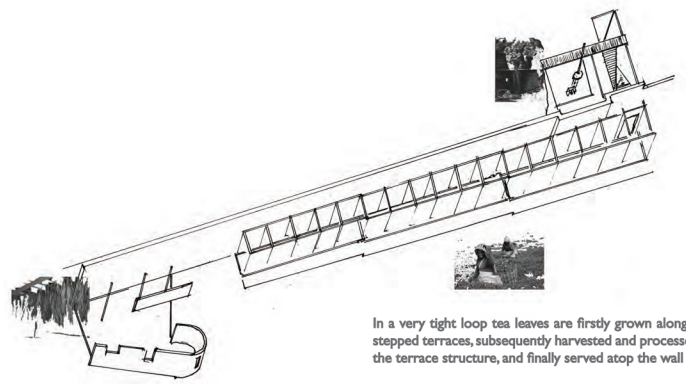
**Section D\_D**  
1/8" - 1'  
Dramatic steps in topography generate levels which can be occupied, cutting into the earth to make space.



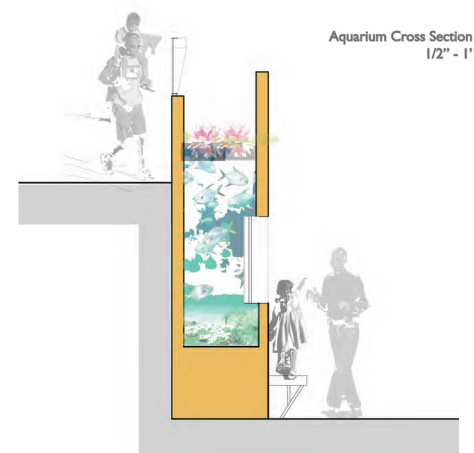
**Section E\_E**  
1/8" - 1'  
Site Elements generate an enclosure within the scale, to create an urban room.



**Section B\_B**  
1/8" - 1'

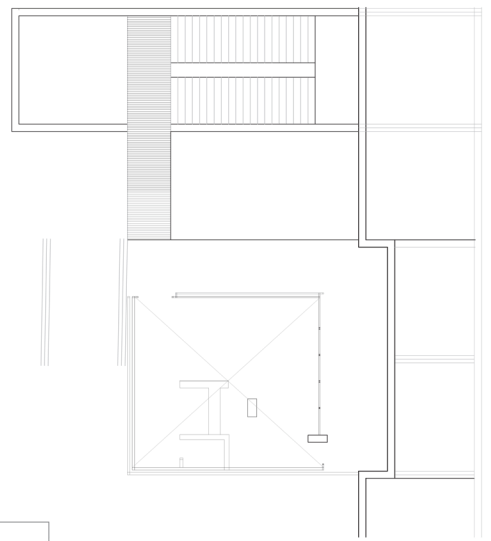


In a very tight loop tea leaves are firstly grown along the wall in a series of stepped terraces, subsequently harvested and processed within the hillside, in the terrace structure, and finally served atop the wall within the pavilion.

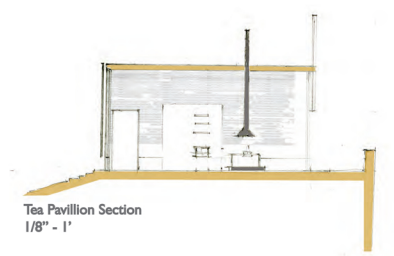


**Aquarium Cross Section**  
1/2" - 1'

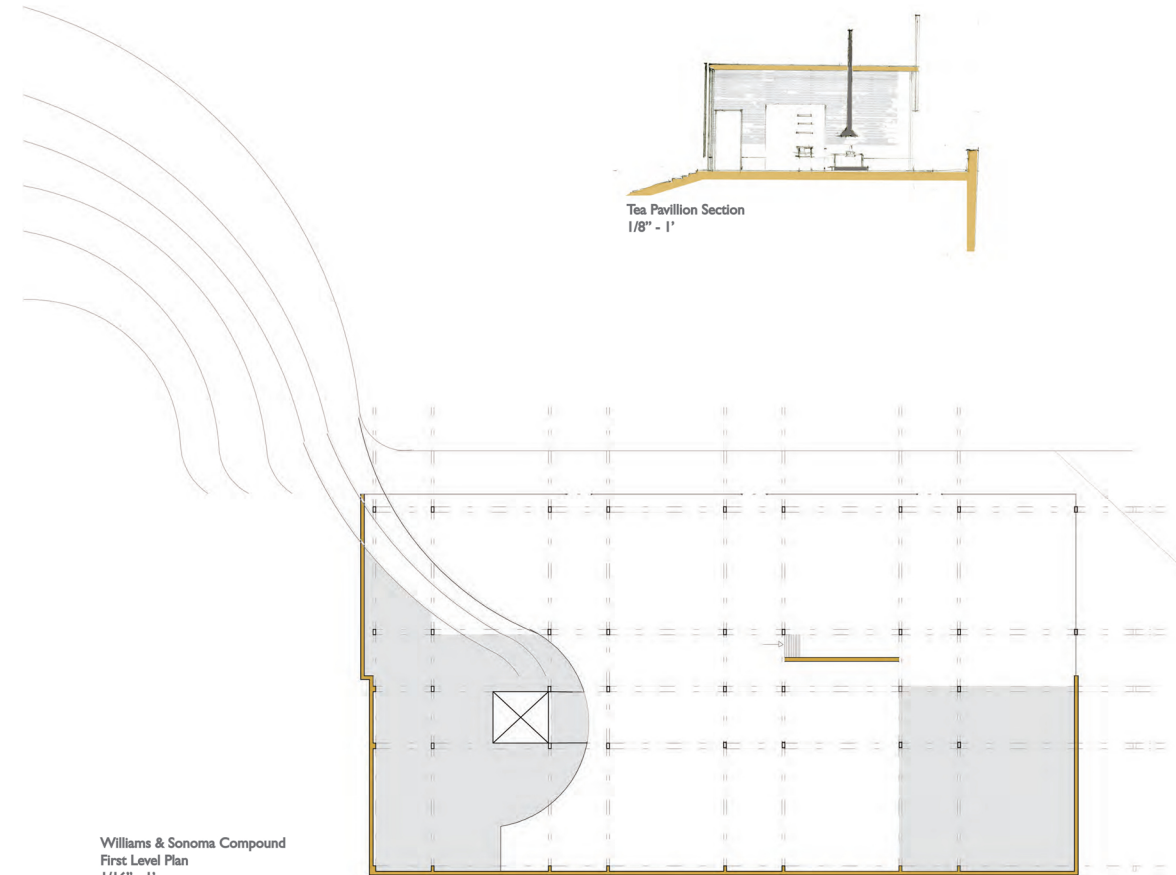
The niches along the wall, help to give scale and rhythm to the space, but I think the possibility for investigation and inhabitation is a useful thought. An aquarium within the space would add to the life of the room, as well as tie in to the narrative of the Bay.



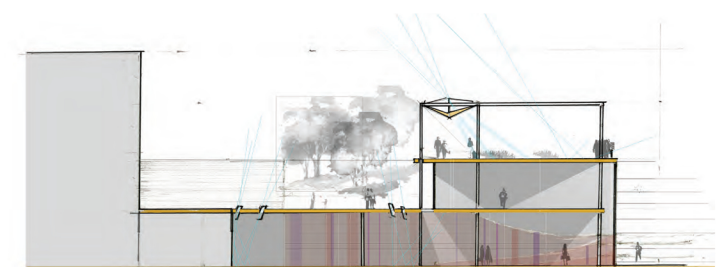
**Tea Pavilion Plan**  
1/8" - 1'



**Tea Pavilion Section**  
1/8" - 1'



**Williams & Sonoma Compound**  
First Level Plan  
1/16" - 1'



**Williams & Sonoma Compound Section**  
1/16" - 1'