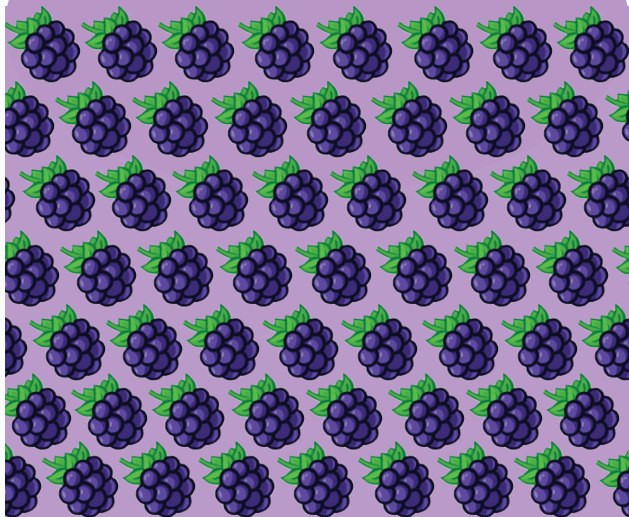


To Open: Peel back this flap. Peel back side and bottom flaps to find additional information on inside packet!



SWEET SEASONS SEED COMPANY

BLACKBERRY
Brooklyn Botanical Garden

\$1.59
Net Weight
2.5 grams



Cut Plant tag along dotted line. Staple to stake such as popsicle stick, etc.
Use as row marker in garden or in transplant trays.

IMPORTANT!

Read inside of packet for harvest, storage, planting, and other information



Days to Emerge:

10-15 Days

Speed Depth:

1/2"

Speed Spacing:

3"

Row Spacing:

1.5' - 2'

Thinning

When 3" tall,
thin to 1' apart.

Growing blackberries in your garden will delight anyone who loves a blackberry pie! Blackberries are traditionally collected from wild brambles but unfortunately, these days, with car pollution and farming products, wild blackberries aren't necessarily safe to pick from the side of the road or between fields.

If you have the space, a bramble dividing hedge is perfect in the garden. And thornless varieties are readily available now so picking isn't such a dangerous business!

Blackberry leaves are high in vitamin C content and make a wonderful tisan, and the fruit of the bramble - the blackberry - is one of the sweetest tastiest fruits to eat. They are best eaten fresh, but can be made into delicious pies, tarts and crumbles, and of course jams and preserves.



Botanical Interests, Inc.

Botanical Interests, Inc. 660 Compton Street 3B
Broomfield, CO 80020 PACKED FOR 2000, Lot #1.