

Internship



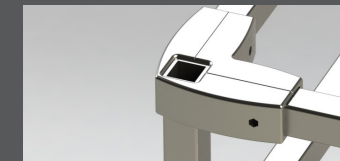
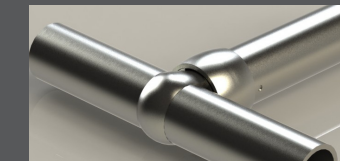
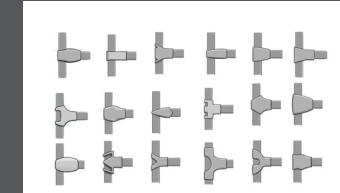
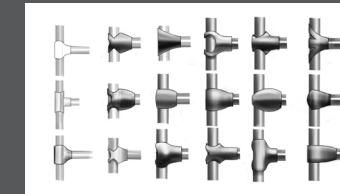
Grand & Benedicts
April - December 2012



Redesign: Jewelry Display Case

One of my first tasks at Grand & Benedicts was to redesign a display case that is offered in their catalogue. The design needed updating and they needed to **test me on CAD.**

The new design needed to **be identical** to the original specifications but be better designed.



I worked with the design team at Grand & Benedicts to develop a new rack and wall fixture system. Simply, it uses **cast steel parts** and extruded square tube to offer the retailer a **fully modular** system.

