



PORTFOLIO



LUKE TRESKOVICH





# CONTENTS

Public Transit Hub

Temporary Casino

Plasmon Food Development

Renovations & Remedial Work

Residential Work

Cabo San Lucas Retail Space

Waterfront Redevelopment

Akron Lock III

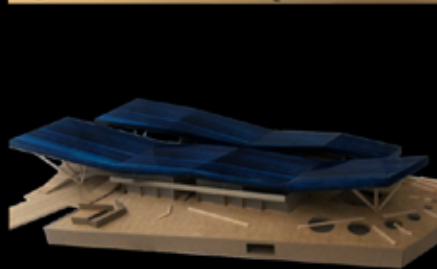
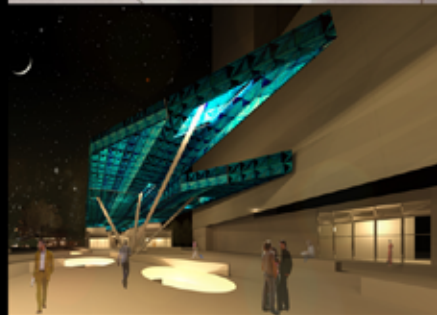
Chagrin Falls Library

Ohio City Yoga Studio

Artist in Residence

Sketches & Photography

Resume



# PUBLIC TRANSIT HUB

a new transit center for southern MILAN, ITALY

Control spatial **MOVEMENT** in architecture

Integrate a **NETWORK** of public connections

Study the space through **TIME** of day

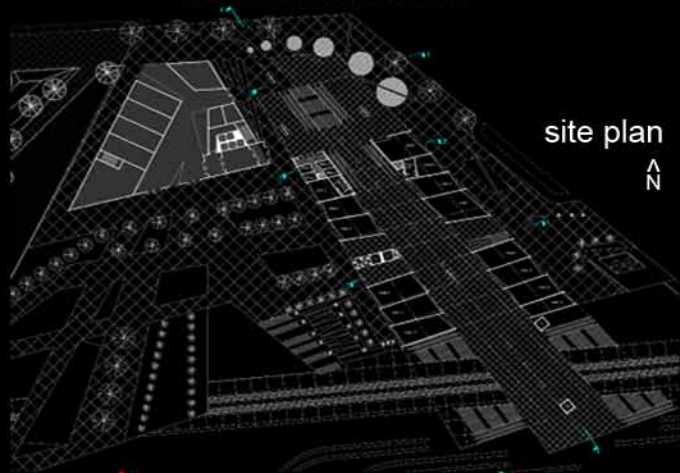
What effects of **LIGHT** change the experience

**CONNECT** the site with the city

Make a new **ICONIC GATEWAY** for Milan



view approaching south



site plan



diagrams

subway



bus



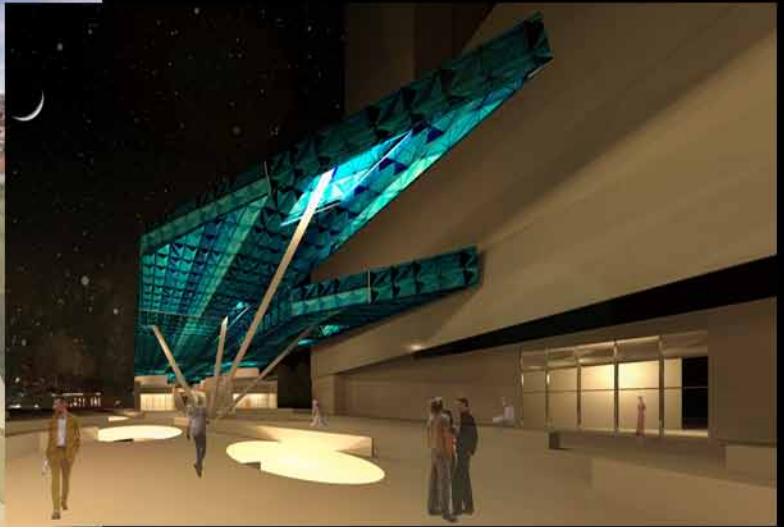
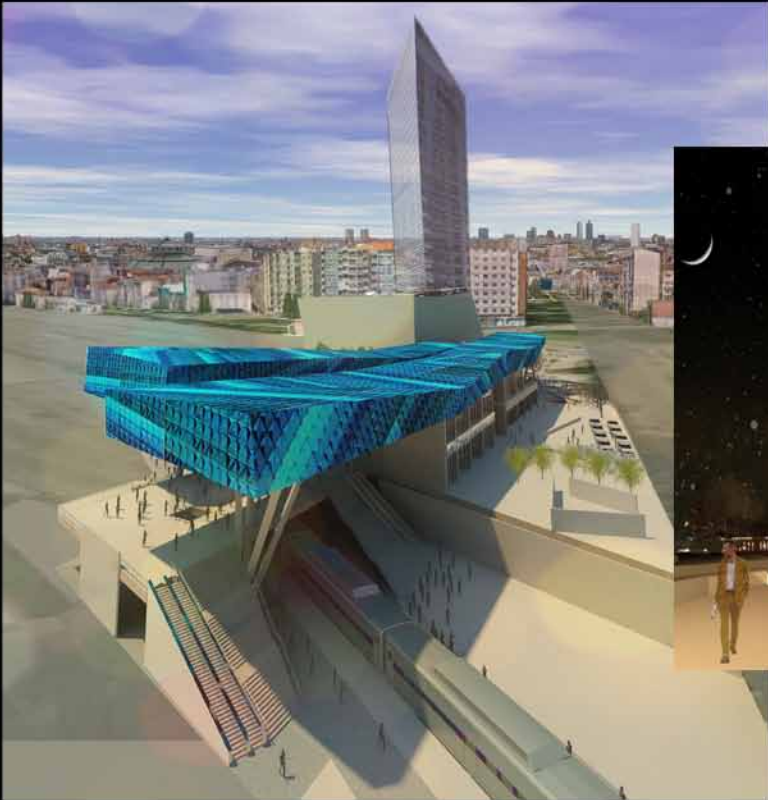
train



taxi

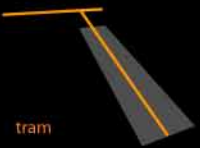


interior corridor

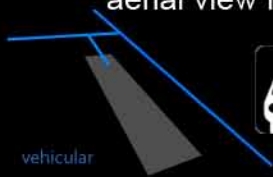


main entrance view

aerial view from south



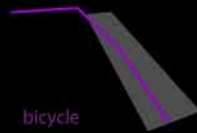
tram



vehicular

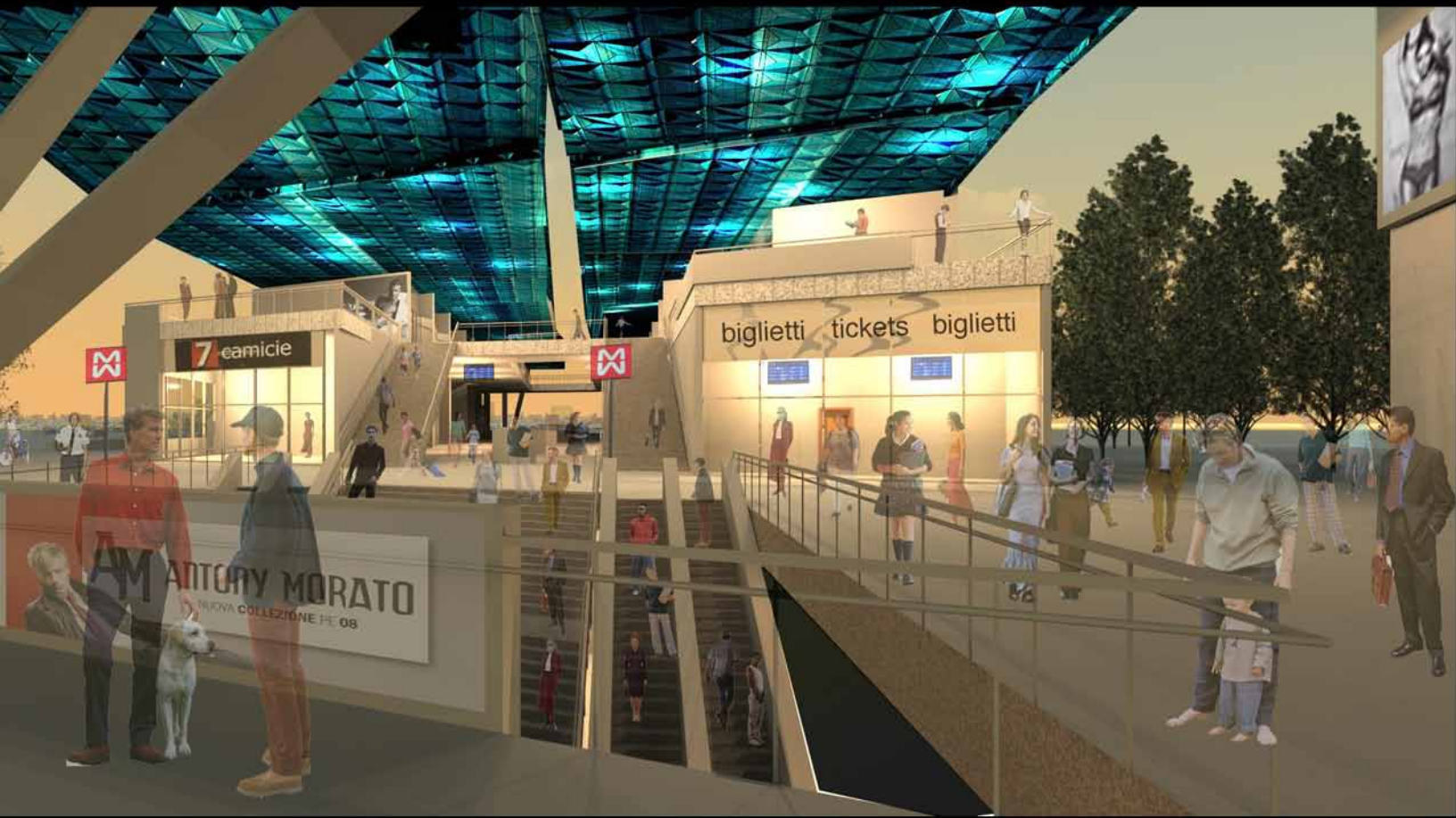


pedestrian



bicycle





entrance corridor at dusk



entrance corridor at dawn

# TEMPORARY CASINO

designing a new gambling center for CLEVELAND, OHIO

Starting with the fundamentals of a casino; the idea of gambling, the space evolved through a step-by-step process from the simple playing card to linking the functions of public square in downtown Cleveland. The casino was pushed, pulled, and twisted to adjust to surrounding context, programmatic elements, scenic vistas, & increased natural sunlight which created a dynamic structure fit for a major new iconic development for the city.



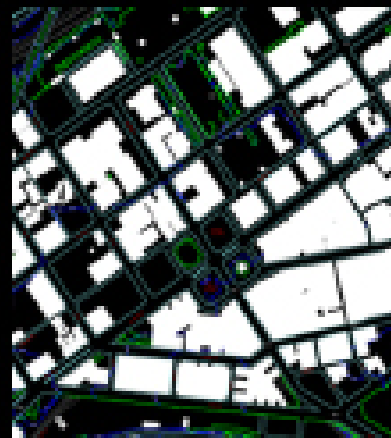
card semiotics



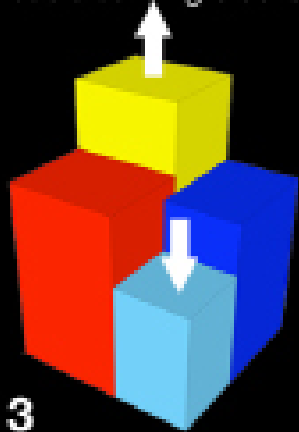
basic building blocks



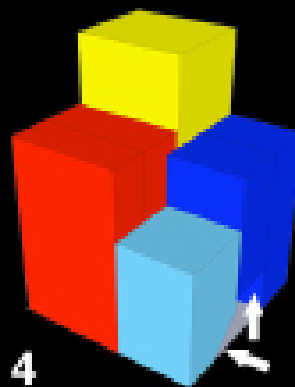
creating structures



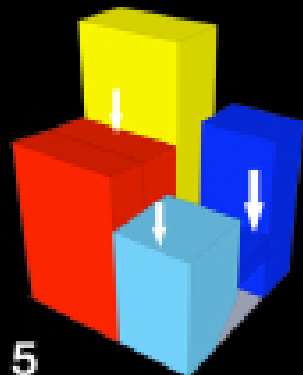
downtown cleveland



3



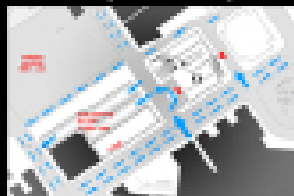
4



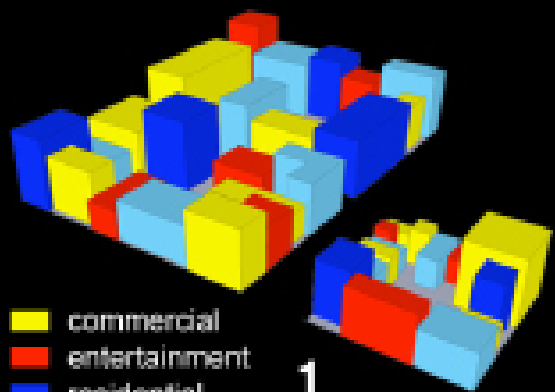
5



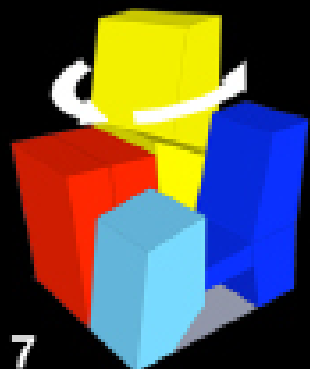
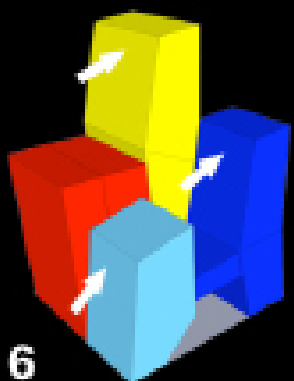
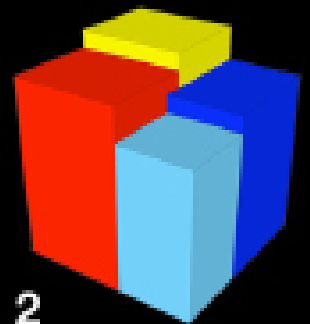
public square



site plan



- commercial
- entertainment
- residential
- retail



The historical urban fabric of the downtown warehouse district in Cleveland exist as individually characterized city blocks with buildings defining their own function. Functions could range from banks, offices, restaurants, residential, etc. The idea was to compound these programs to one city block on Public Square. At this point, morphing the form in several ways enabled a design to develop that acts as an addition to the gap in Public Square.



Left: primary view of the casino seen along Superior Avenue.

Top & Bottom: Views approaching the casino.

Right: View from across Public Square with proposed plan by Field Operations.





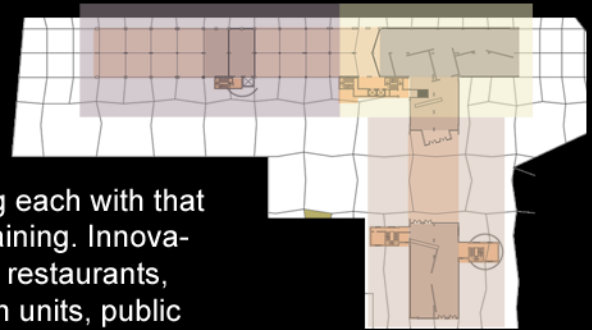
# PLASMON FOOD DEVELOPMENT

a residential & entertainment redevelopment of an industrial factory. MILAN, ITALY

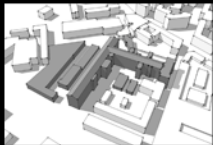


milan metro area with site ●

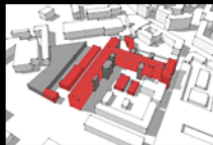
Located in a district of Milan with a lively night scene & dense residential housing, the site was divided into two zones providing each with that function: living & entertaining. Innovative materials, luxurious restaurants, spacious, open floorplan units, public spaces, and trendy nightclubs help add to this eclectic Milanese neighborhood.



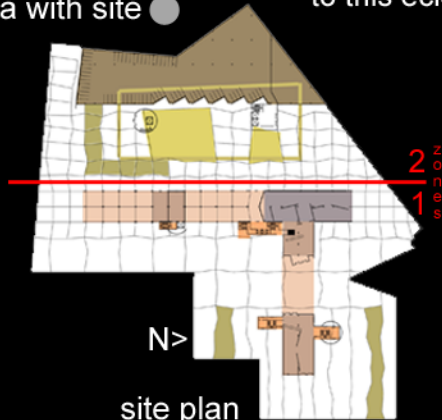
zone 1 plan



site aerial



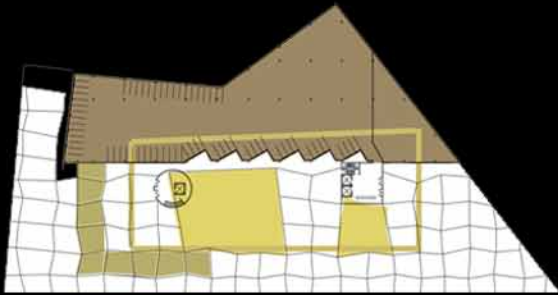
demo aerial



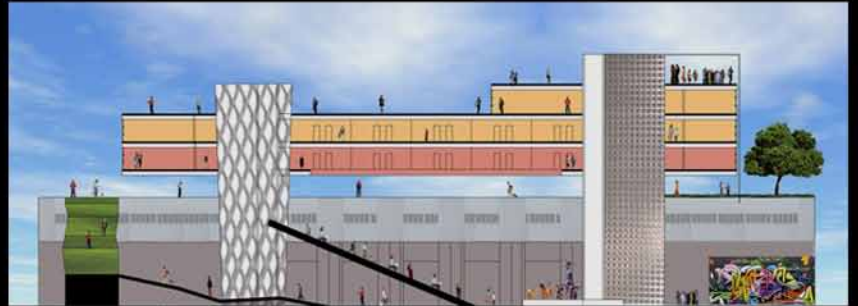
site plan



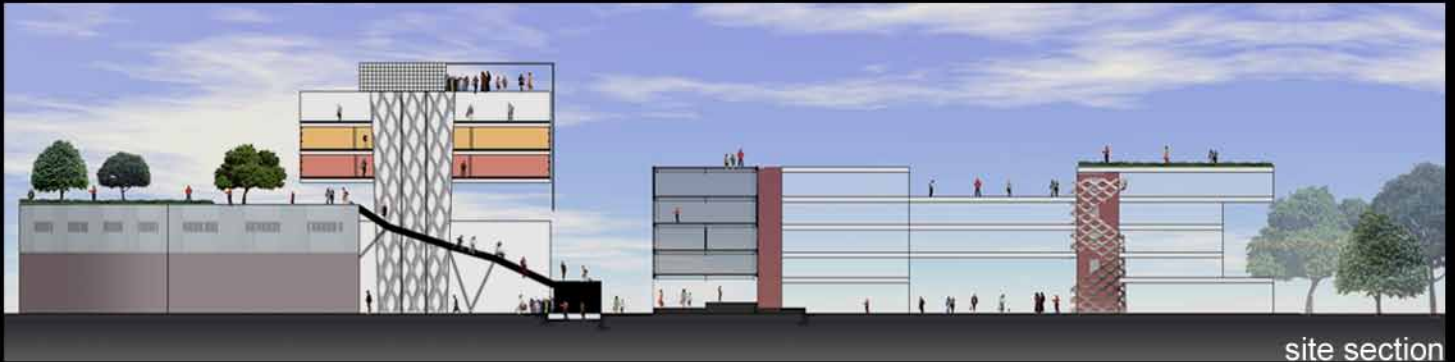
entrance elevation



zone 2 plan



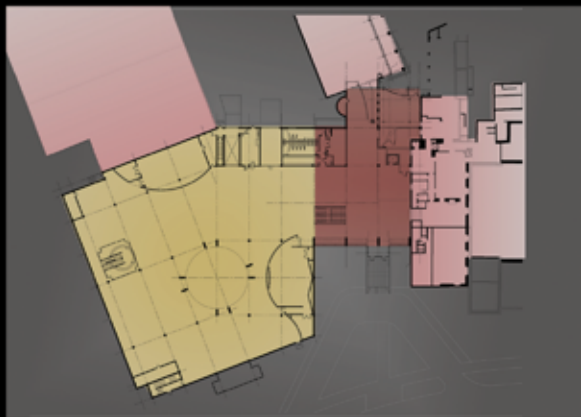
zone 2 section



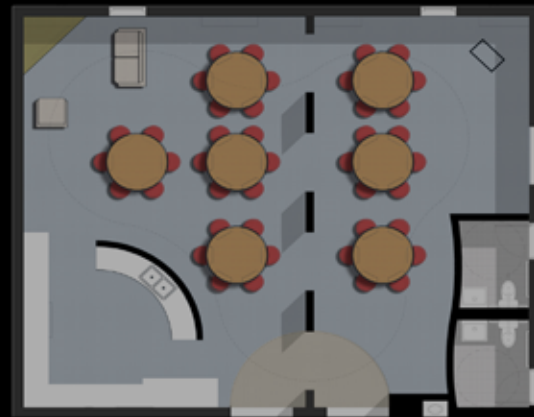
site section

# RENOVATION + REMEDIAL WORK

completed collaboratively at Richard Fleischman + Partners Architects



- gallery
- corridor
- existing



## ALPINE HILLS CONVERSION

Motel was converted to an assisted living facility using a limited budget. Rooms were modernized & lounges designed to create a peaceful space for the elderly.

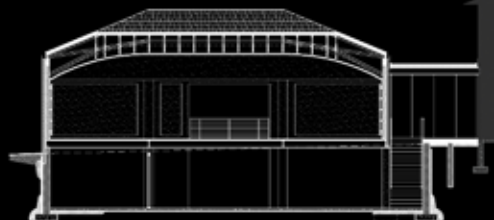
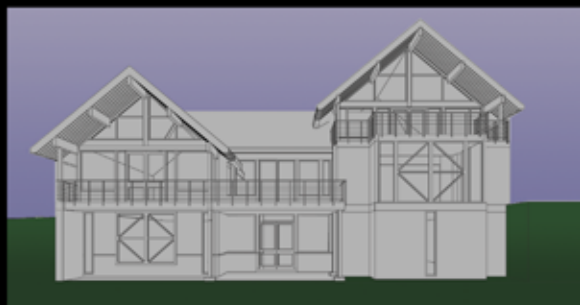
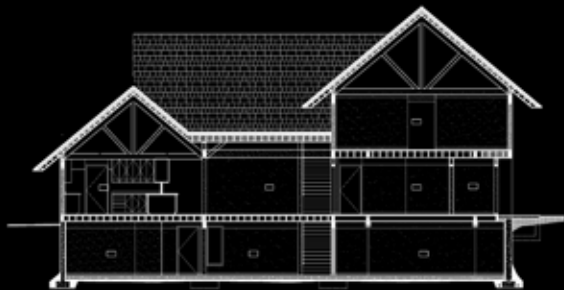


## WESTERN RESERVE HISTORICAL SOCIETY MUSEUM RENOVATION

Updated automobile gallery & main corridor spaces, including a curved ceiling mimicking vehicular aerodynamics.

# RESIDENTIAL WORK

completed collaboratively at Richard Fleischman + Partners Architects



## ADIRONDACK SKI CHALET

Double A-frame house set high overlooking Lake Champlain. The open floor plan, large windows, & numerous terraces provide expansive vistas.

## SHAKER HEIGHTS ADDITION

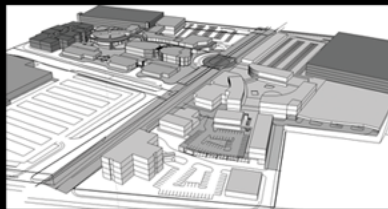
Colonial addition to provide a home theater & multi-purpose gallery space for artistic clients. A compound barrel vault provides ambient lighting & mural space.

# CABOS SAN LUCAS OUTDOOR MALL

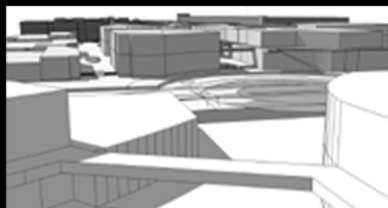
CONCEPTUAL & SCHEMATIC DESIGN: work completed at ka architects



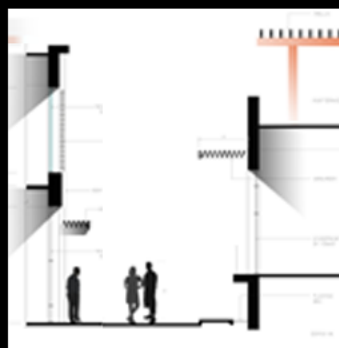
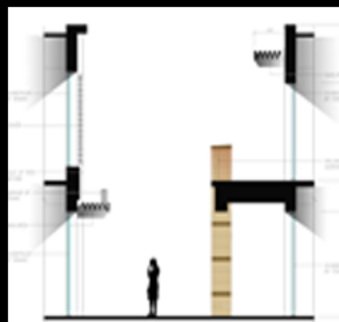
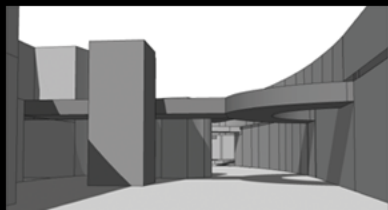
Piazza Space Study



Aerial Study

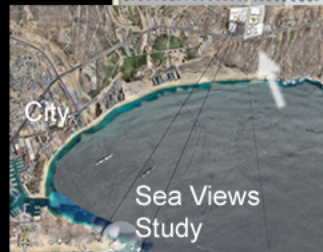


Entrance Studies



Sunlight Diagram Studies

Site



Sea Views Study



Enlarged Site Plan

Located on 38 acres at the southern-most point of the Baja California Peninsula in Cabo San Lucas; the program included a cinema, food court, Walmart, hotel, four story garage, two floors of retail space, restaurants, and several outdoor spaces.

## DESIGN DEVELOPMENT



South Elevation: 1

Phase One Site Plan



Space Study Perspective



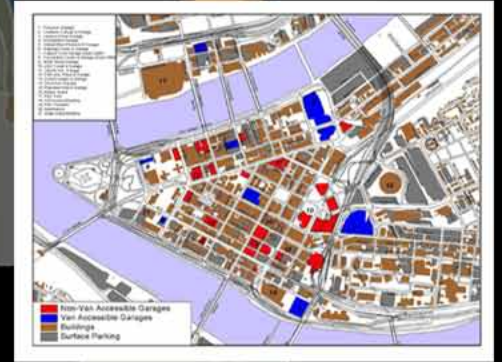
East Elevation: 2

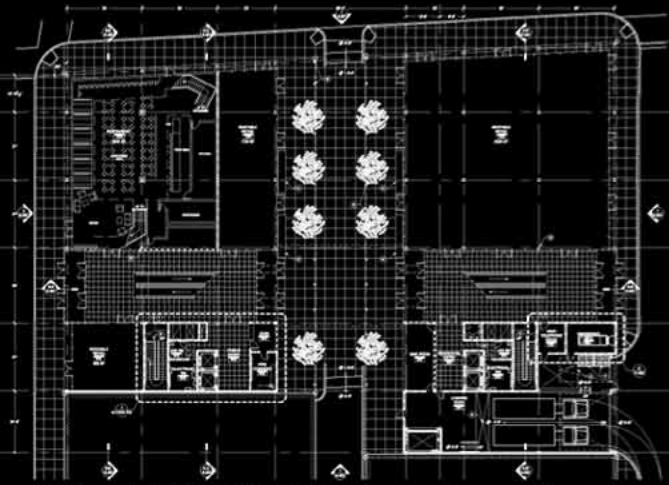
Further development of the Mediterranean architecture was investigated in site plans, elevations, and perspectives of the 19 acre phase one site. Each work was personally composed; excluding the collaboratively developed perspective.

# WATERFRONT REDEVELOPMENT DOWNTOWN PITTSBURGH



The waterfront redevelopment of Pittsburgh is a crucial step to connect the downtown center with the strip district & convention center areas. Open blocks across the river from the ballparks have unlimited potential for both residential & commercial structures, yet create a void within the density of the skyline. The project called for the development of one city block. The building was designed to maximize natural light for the office & residential units while capturing the views of the three rivers



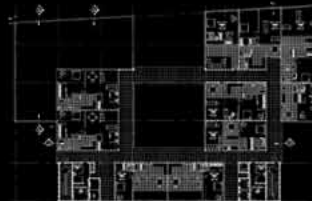


**Ground Floor Plan** showing restaurant & retail space, a naturally lit exterior space connecting the two towers & the building cores in the southern portion of each wing. The building's lower levels consist of retail & office space. As it towers upward, terraces are created on the residential floors when the structure stops with the remaining building continuing to rise. Each phase shrinks the floor plan yet allows for larger, custom-designed residential units.

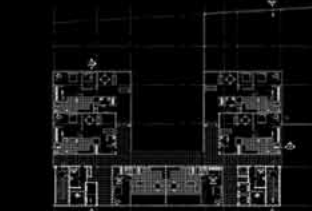
Retail & Office Space



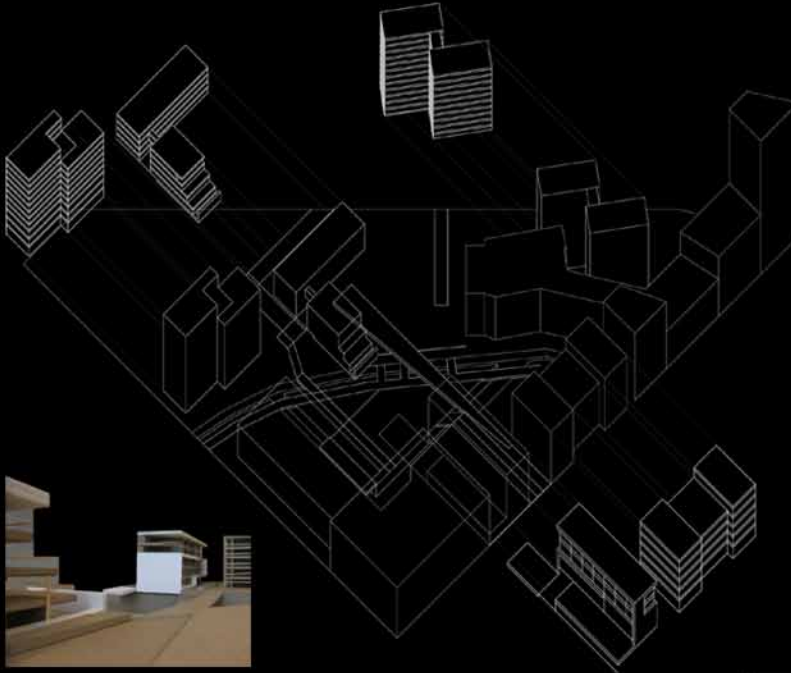
Phase 1 Residential



Phase 2 Residential



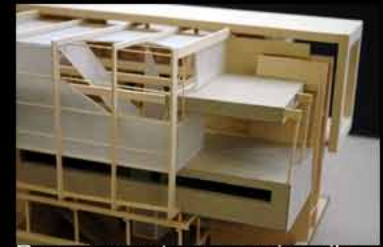
# AKRON LOCK III



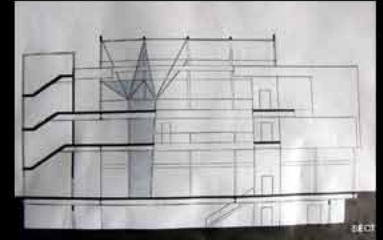
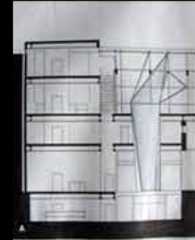
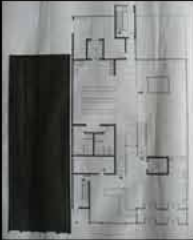
The objective was to create a new city center by developing a network of interacting buildings with various functions. The site was divided into three areas: Entertainment, Residential, and the city center. Preserving green space & using sustainable design ideals were maintained throughout.



# CHAGRIN FALLS LIBRARY



Pure geometry was primarily utilized in this design. The simple square-framed window in the front and rear allow visitors to view the picturesque town while they relax in the reading room. Breaking from the forms is a vertical lightwell that shatters the grid of the main reading room, as shown above and allows light to shine down to the basement.



# OHIO CITY YOGA STUDIO



# OHIO CITY YOGA STUDIO



preliminary model 1



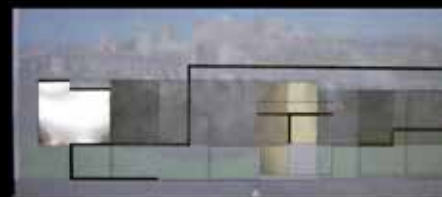
preliminary model 2



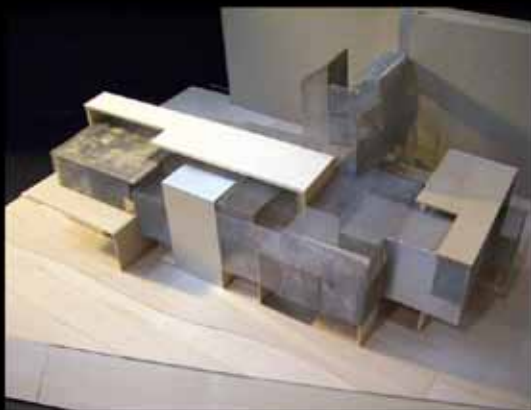
preliminary model 3



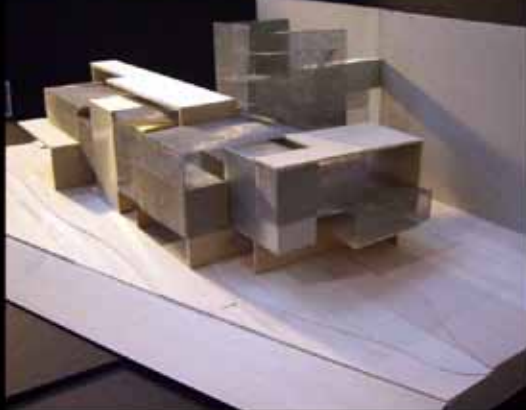
preliminary model 4



section



Final Model 1



Final Model 2

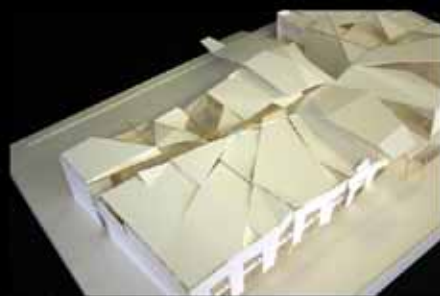


first floor plan

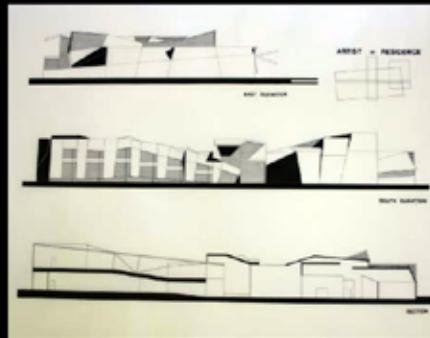
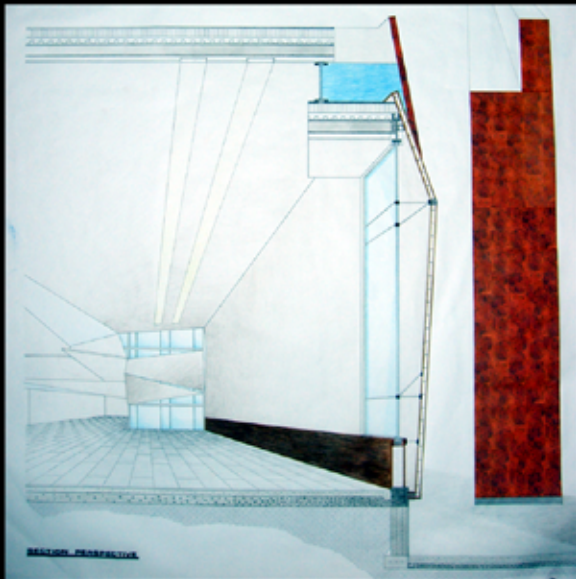


second floor plan

# ARTIST IN RESIDENCE



# ARTIST IN RESIDENCE



Implosion was the key concept in this art museum and residence. The points of demolition were utilized to create dynamism. These moments dramatically affected the irregular shapes on the exterior facades.

The central demolition point occurred at the center causing the building to sink inward; collapsing in on itself while remaining strong. Circulation occurs at a main implosion fault line. The materials used in the construction were concrete, glass glazing, galvanized steel and rusticated iron. The rusticated iron is shown boldly on the exterior front facades.

# PHOTOGRAPHY



# SKETCHES



# LUKE TRESKOVICH

INTERN ARCHITECT

2450 BRAYTON AVE APT K-7

ALLIANCE, OH 44601

LTRESKOVICH@GMAIL.COM

+001.724.689.2002

**OBJECTIVE:** TO OBTAIN A POSITION AT AN ARCHITECTURAL FIRM OR DEVELOPER WHERE I WOULD GAIN EXPERIENCE IN THE FIELD AND WORK TOWARDS BECOMING A REGISTERED ARCHITECT.

**EDUCATION:** MASTERS OF ARCHITECTURE  
KENT STATE UNIVERSITY  
KENT, OH 44240  
CLASS OF 2010  
3.7 GPA

BACHELOR OF SCIENCE IN ARCHITECTURE  
KENT STATE UNIVERSITY  
KENT, OH 44240  
CLASS OF 2007

RESUME

## EXPERIENCE:

RICHARD FLEISCHMAN ARCHITECTS  
ONE YEAR WORKING ON LOCAL PROJECTS IN  
THE CLEVELAND AREA INCLUDING THREE  
HOUSES, A PUBLIC TRANSIT STATION, AND A  
RENOVATION OF THE WESTERN RESERVE HIS-  
TORICAL SOCIETY MUSEUM.

### KA ARCHITECTS

FOURTEEN MONTHS WORKING ON TWO LARGE  
SCALE RETAIL DEVELOPMENTS: A RENOVATION  
OF A 350,000 SQUARE FEET SHOPPING MALL  
AND DESIGNING A 20 ACRE OUTDOOR MALL  
LOCATED IN CABO SAN LUCAS, MEXICO.

### RICHARD MYERS PARTNERS

SUMMER INTERNSHIP WITH A CIVIL ENGINEER.

## SKILLS:

|                 |                      |
|-----------------|----------------------|
| 2-D AUTOCAD     | ADOBE PHOTOSHOP      |
| 3-D AUTOCAD     | ADOBE ILLUSTRATOR    |
| AUTODESK REVIT  | ADOBE INDESIGN       |
| AUTODESK VIZ    | MICROSOFT POWERPOINT |
| GOOGLE SKETCHUP | MICROSOFT EXCEL      |
| MODEL BUILDING  | MICROSOFT WORD       |

## REFERENCES:

RICHARD FLEISCHMAN, FAIA  
OFFICE@STUDIORFA.COM  
216.771.0090

GIOVANNI DAMIANI, ARCHITETTO  
INFO@GDAMIANI.COM  
+39.040.989.7203

AARON HILL, AIA  
AHILL@STUDIORFA.COM  
216.771.0090

DARREL PATTISON, AIA  
DPATTISON@KAINC.COM  
216.781.2503

BILL MASON, AIA, PROFESSOR  
BMASON@KENT.EDU  
216.406.2805

CHRISTOPHER DIEHL, AIA  
DIEHLIO@GMAIL.COM  
216.233.7133

MAURIZIO SABINI, PH.D.  
MSABINI@KENT.EDU  
216.650.3513

PERSONAL REFERENCES UPON REQUEST

