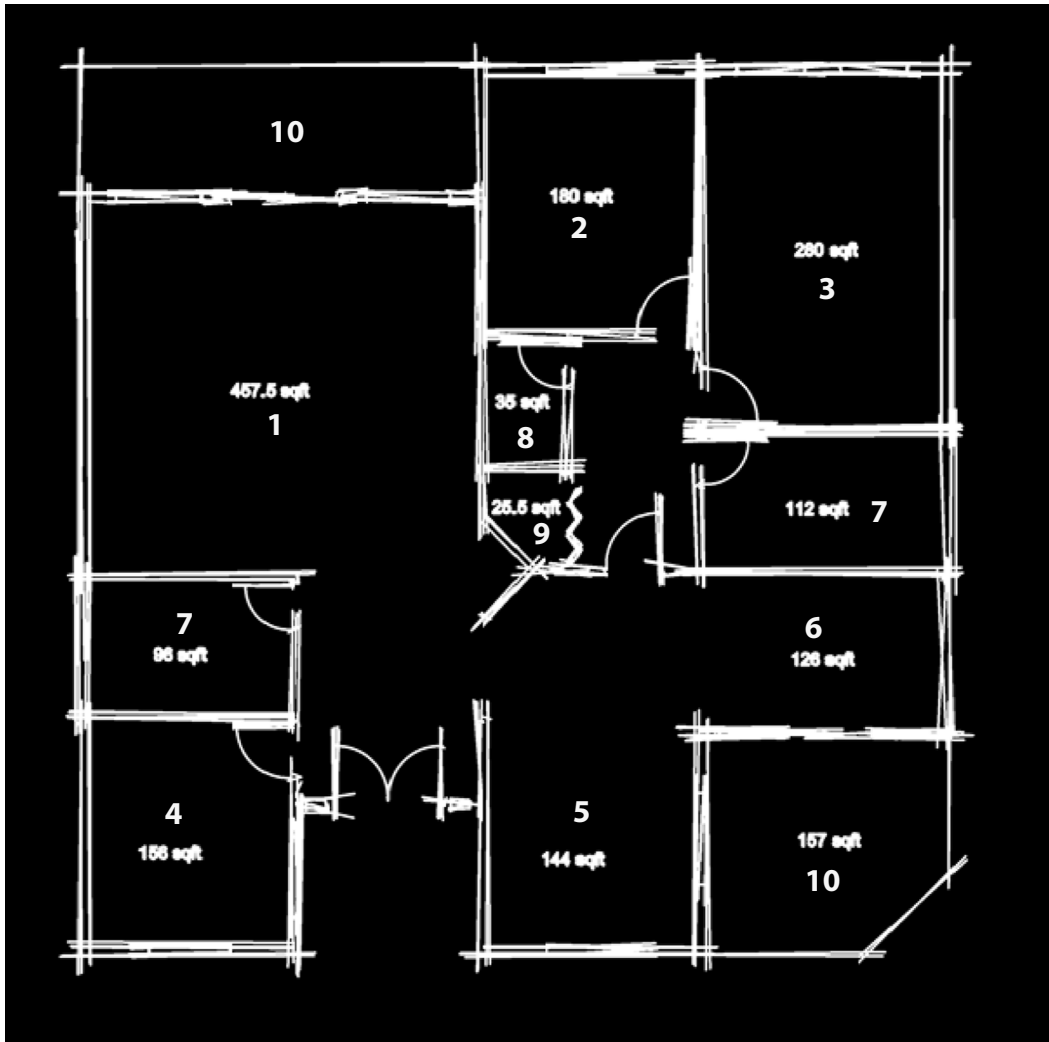
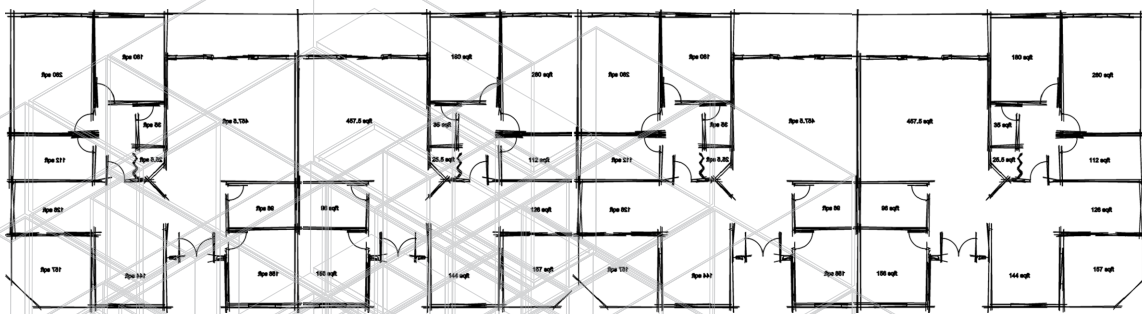


Project. Condo Design

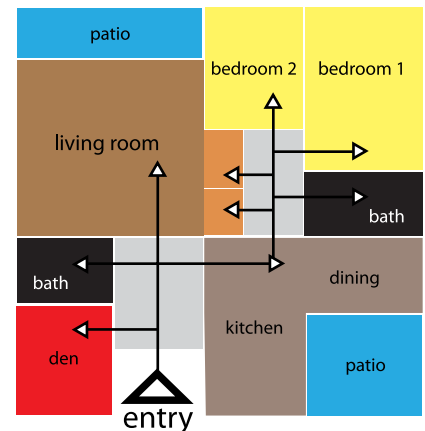


- 1- Living Room 457.5 sqft
- 2- Bedroom 280 sqft.
- 3- Bedroom 180 sqft.
- 4- Den 156 sqft.
- 5- Kitchen 144 sqft.
- 6- Dinning room 126 sqft.
- 7- Bathroom 96 sqft., 112 sqft.
- 8- Utility room 35 sqft.
- 9- Closet 25.5 sqft.
- 10- Patio 157 sqft.

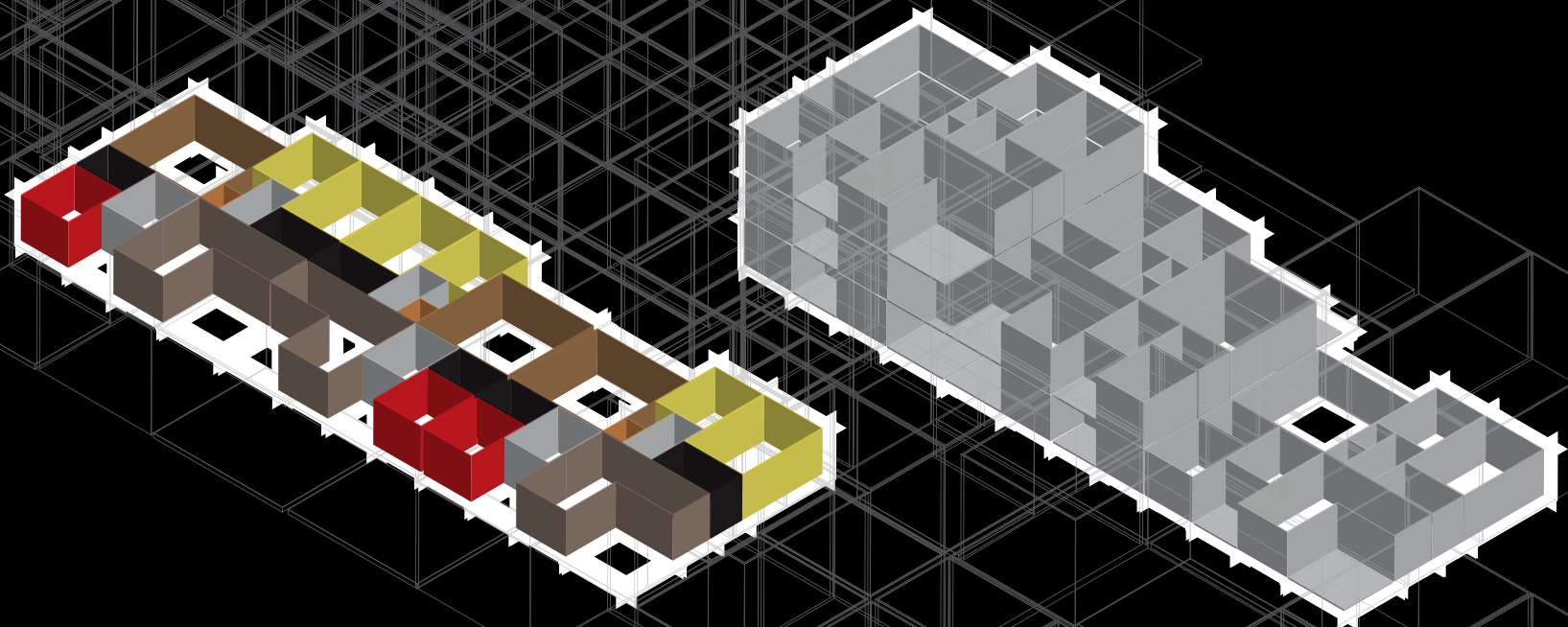
Parallel Entry Ensemble



Space Plan



3-D Visualization Of A Space Planning



The idea of combining a single unit and a condominium was ensemble into the conversion of a duplex. The condo had to be at a fixed proportion to be able to be

utilized in a developing lot. In this illustration the condo can be converted into a parallel entry ensemble or a multi unit complex.