

# SAINT JOSEPH CATHOLIC GRADE SCHOOL PROJECT

SCHOOL DESIGN:  
PAROCHIAL GRADE  
SCHOOL  
JOEY KUENSTLER  
1 of 6

## HISTORY OF ST. JOSEPH CHURCH & SCHOOL

St. Joseph Parish of Olney, IL was founded in 1857. The first church was built in 1861 on the corner of Fair and Butler Streets. In 1892, this small frame church was moved on rollers to the present location at Elliott and Chestnut Street.

Dr. George Weber established St. Joseph School. The school was constructed in 1907 and is still being used today. He brought the Ursuline Sisters of Paola, Kansas to teach at the parish school. The second floor of the school was used to celebrate Mass after the old church was vacated in 1908. Construction of the present-day church began in 1937. Although interior renovations took place during the fall of 1979, the exterior of the Church remained essentially unchanged. Today St. Joseph's Parish serves about 700 families.

In 1957 St. Joseph Parish celebrated its 100th anniversary. During this year the building housing the gymnasium and school cafeteria (formerly known as the Parish Center) was built. Sister Theresa Ann Kiefer, ASC, the last nun to serve our parish, was Director of Religious Education until 1991.

In 1995, after careful study of the growing need for additional space within the parish, a decision was made to construct a new building adjacent to the Church. To provide space for the new building, the Parish House had to be demolished. On August 17, 1997 construction for the new Parish Center started. The Parish Center includes a large multi-purpose space for parish and school activities, classrooms, a computer lab, kitchen facilities, meeting rooms, an all weather entrance, new parish administrative offices, school main office, and is handicap accessible.



FRONT VIEW OF ST. JOSEPH CATHOLIC GRADE SCHOOL



SIDE VIEW OF ST. JOSEPH CATHOLIC CHURCH



FRONT VIEW OF ST. JOSEPH CATHOLIC CHURCH



FRONT VIEW OF ST. JOSEPH MULTI - CENTER



FRONT VIEW OF THE OLD PARISH CENTER

## COMMUNITY IMPACTS

This building and structure plays such a huge role for the community both socially, religiously, and historically. It is amazing what all just these structure do for a town of 8,000 people. That does not even add up what all the church parish does for the community besides giving them a place to worship. This structure also develops a sense of stability of the community as a whole, due in part because of its past.

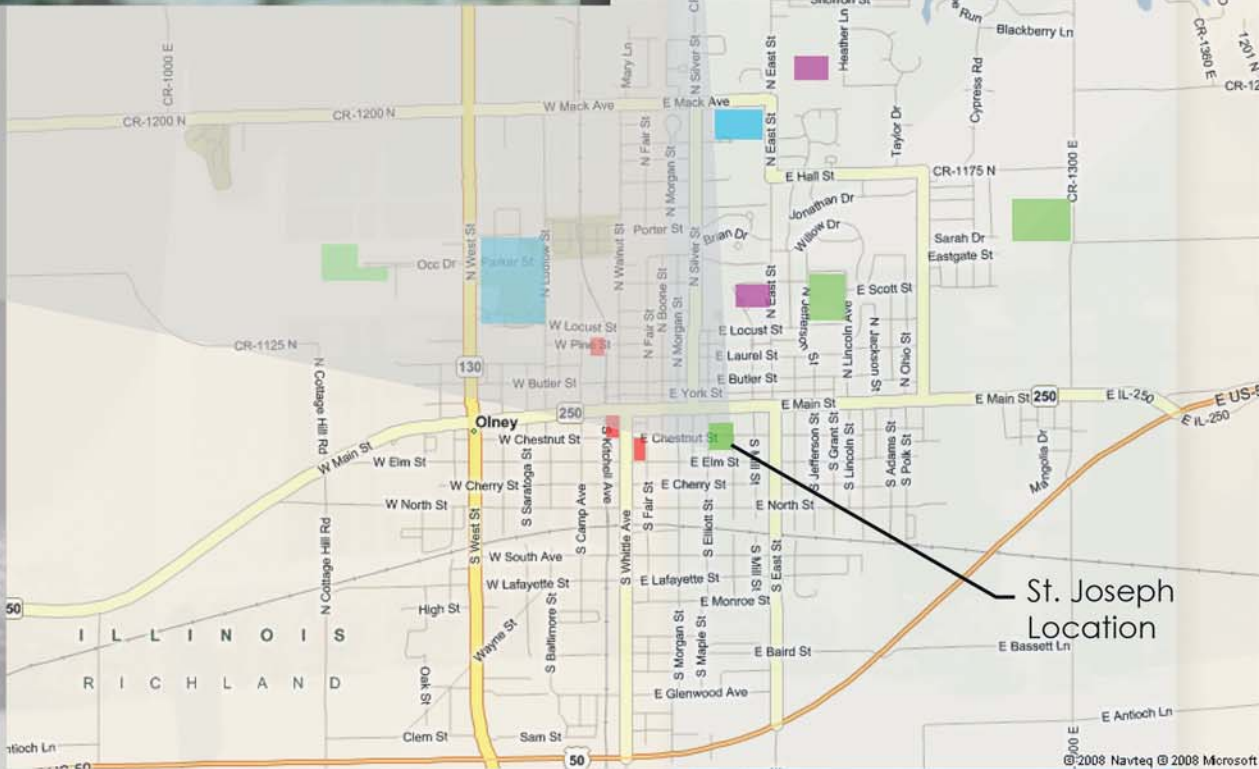
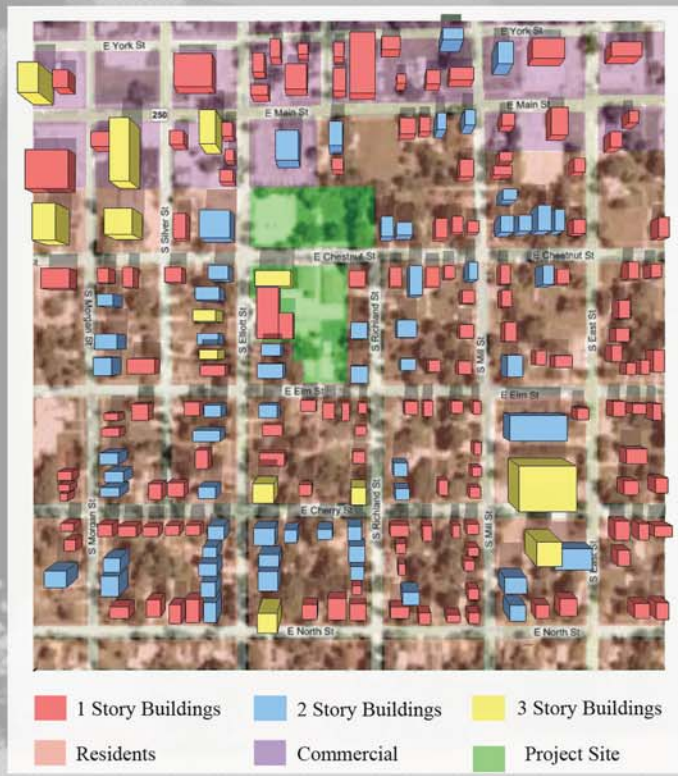
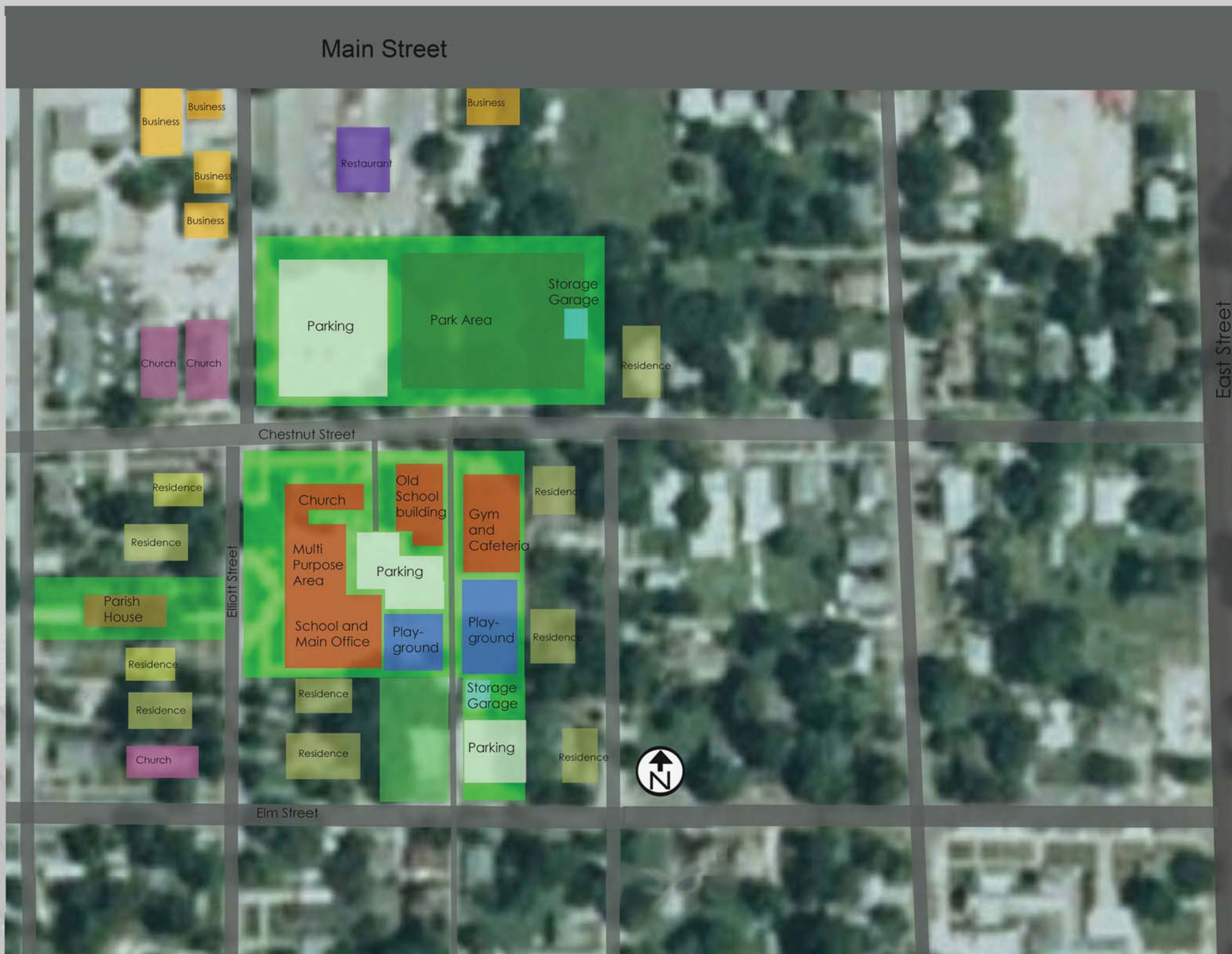
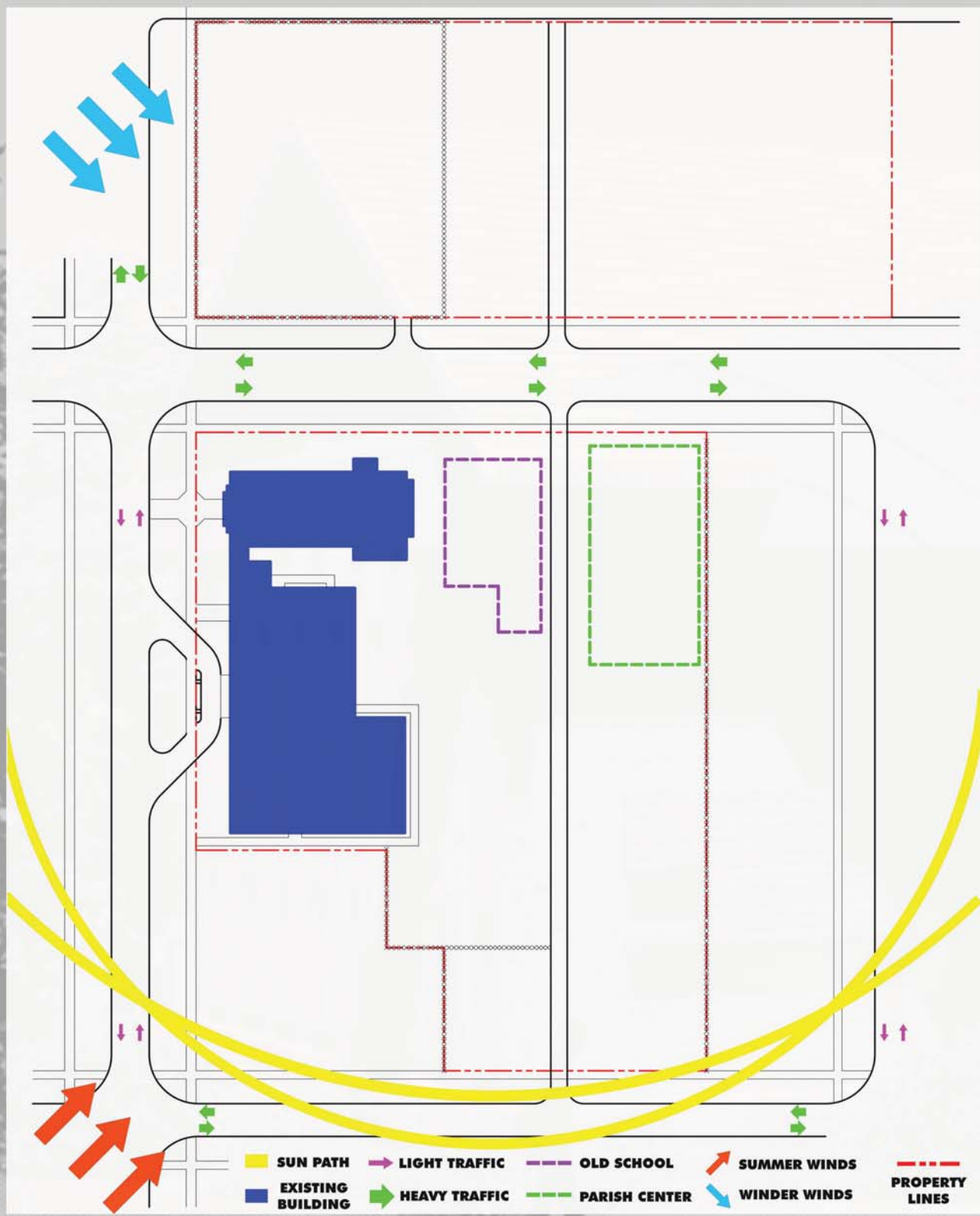
Religiously it establishes its own inter community through the church. It also, establishes connections through all ages for both teaching and worship. It too, establishes outside of Olney with other community, which helps strengthen ones overall inner bond. It has a strong history that ties back with the beginning of the town. Plus, in a way the church has been able to helped shape the town to the way it is today.

It has also, developed one of the few historical districts in Olney. This gives other organizations and programs something to strive for and try to accomplish for historical meaning and preservation.

## PROJECT OVERVIEW & SITE ANALYSIS

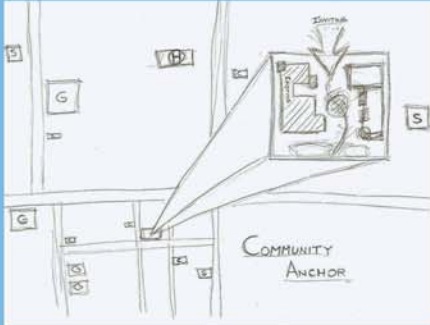
This thesis will focus on the redevelopment of the St. Joseph Catholic Grade School in Olney, Illinois. The redevelopment will consist of clearing way of an aged inefficient school and old parish center buildings. These buildings will be replaced by the new redevelopment of the two. This will then give the St. Joseph Parish a new school building with a gymnasium and cafeteria. The new building will be fully designed to take on the many needs of the school. The design of the new building will take on a fluctuation enrollment of up to 250 students from grades pre-kindergarten up to 8th grade. The extracurricular activities will also be expected to use the new building. These activities consist of boys' basketball (A, B, C teams), cheerleading, girls' basketball (A, B teams), cross-country, track, speech, band, cadet band, choir, patrol, and problem solving team.

As part of the redevelopment, a blending of the existing buildings and the new structure will be designed. This will help unify the St. Joseph Parish community with a fully functional site that is ready to welcome both its inner and outer community members. The site will include the existing building being the church and its ten year addition of the multi-center the existing parking lots the existing park, a new school playground, and a new school building with a gymnasium and cafeteria.

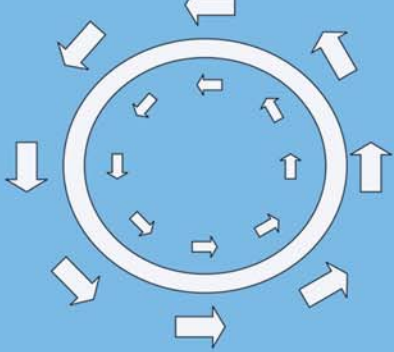


## DESIGN ISSUE

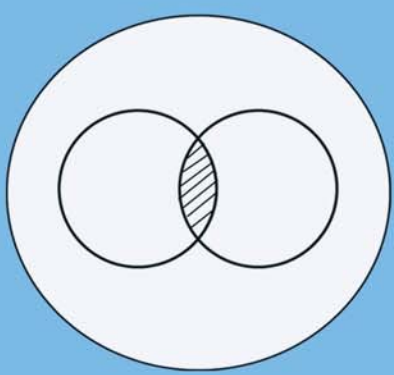
Community Anchor



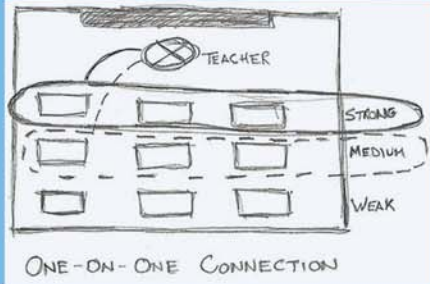
Security - Public and Private



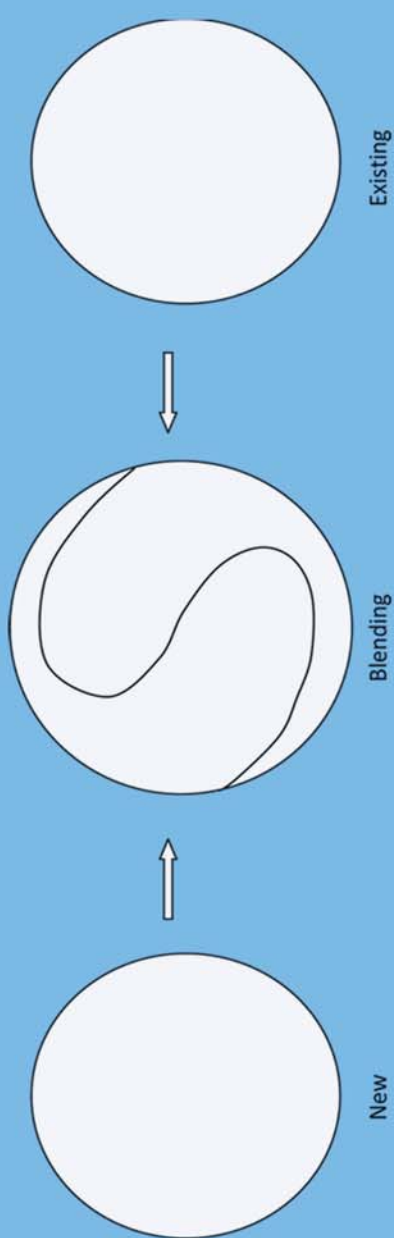
Unity within the Community



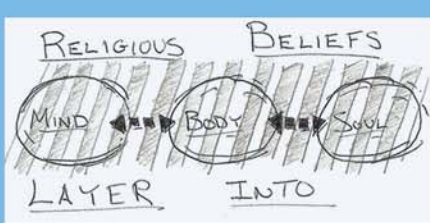
Classroom Learning Environment



Blending New with Existing



Blending Religion into the School



## OLNEY ILLINOIS

