

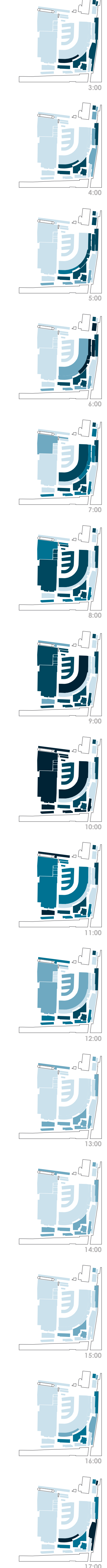
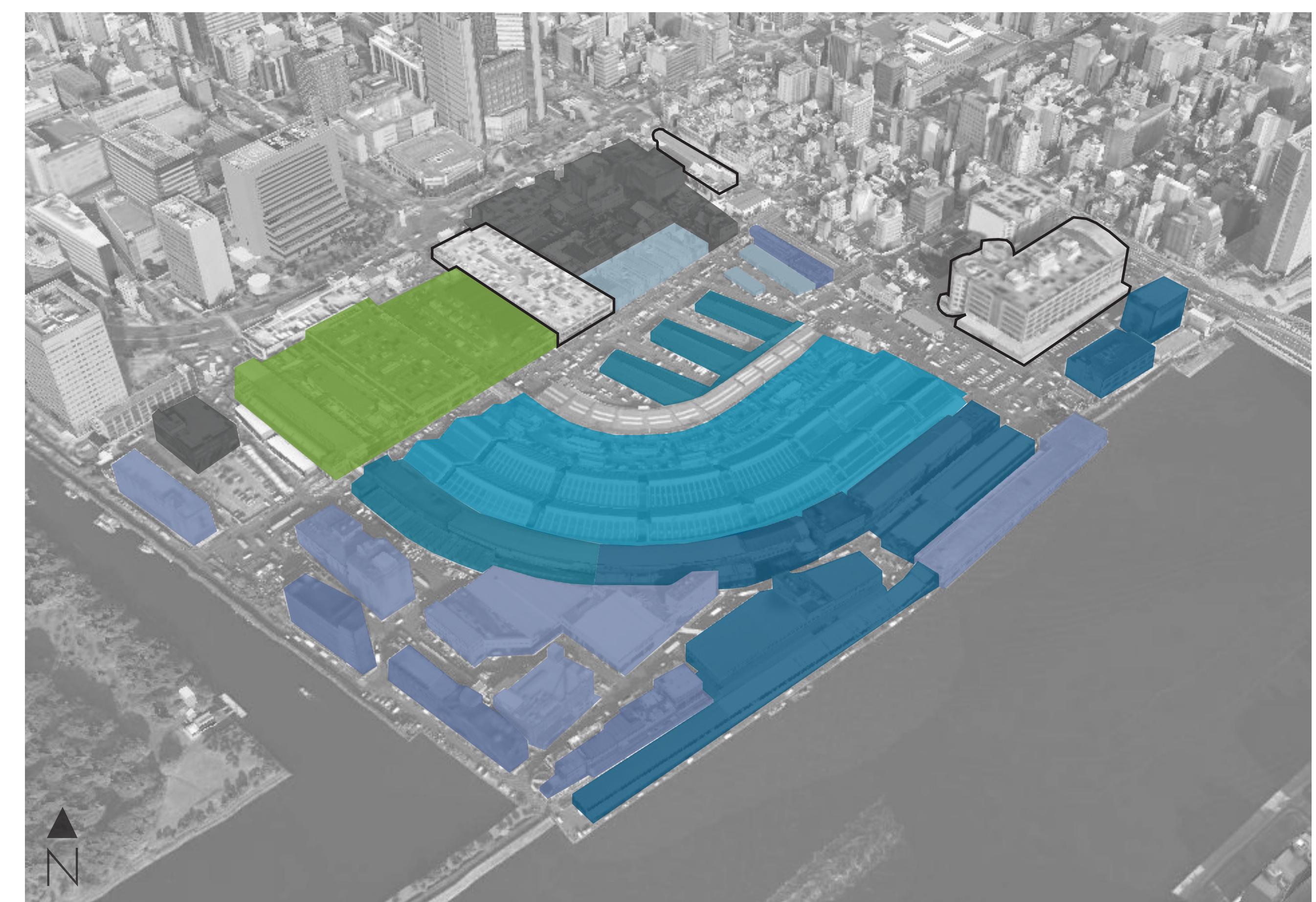
Tsukiji Wholesale Market _ Site Analysis

Emerson Stepp + Abha Mistry _ Arch Grad Studio V: Living Machines _ 12 14 2011

Project Goal
Precedents + Research



The market has deep connections and **relationships** with the surrounding communities that reach far beyond the physical boundaries of the site. We are taking the position that the Tsukiji Wholesale Market **needs to remain** on its current site to maintain these deeply established connections and relationships. In order for the current market location to remain viable, the site must be **optimized** to create more efficient circulation and use of land. Optimization of the site requires **densification** of the market functions to allow community, commercial, residential spaces to be integrated.

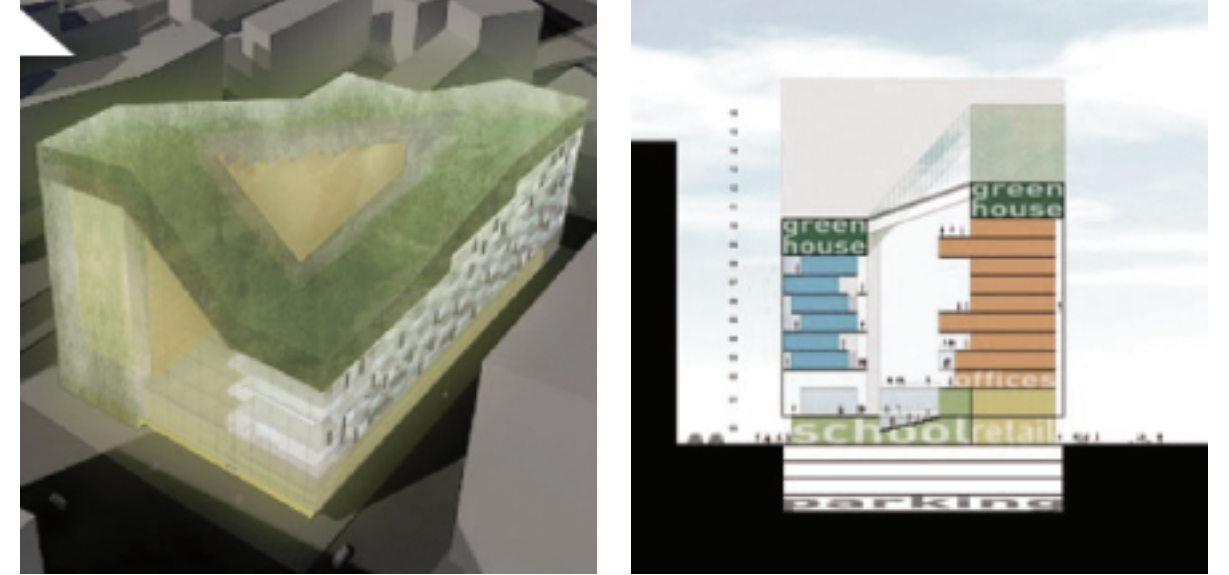


Railroad Park
Birmingham, AL | Tom Leader Studio



	farming	efficient energy	multi-use program	integration of community
Railroad Park	Light grey bar	Light grey bar	Dark grey bar	Dark grey bar

The Zuidkas
Netherlands | Paul de Ruiter



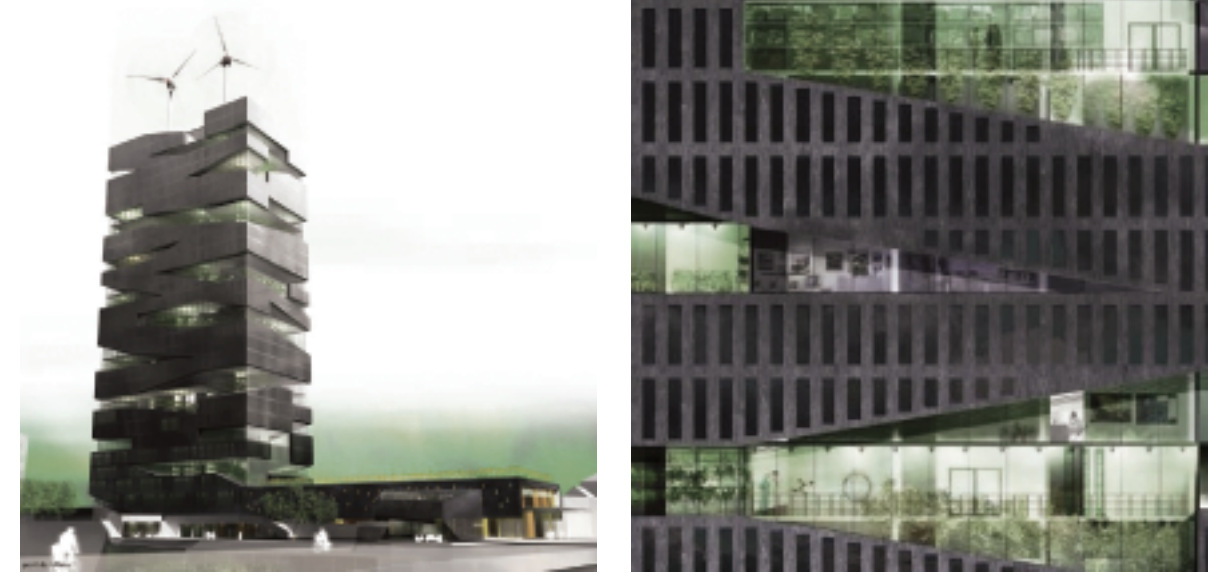
The Zuidkas	Dark grey bar	Dark grey bar	Dark grey bar	Dark grey bar
-------------	---------------	---------------	---------------	---------------

Indoor Farm
Tokyo, Japan



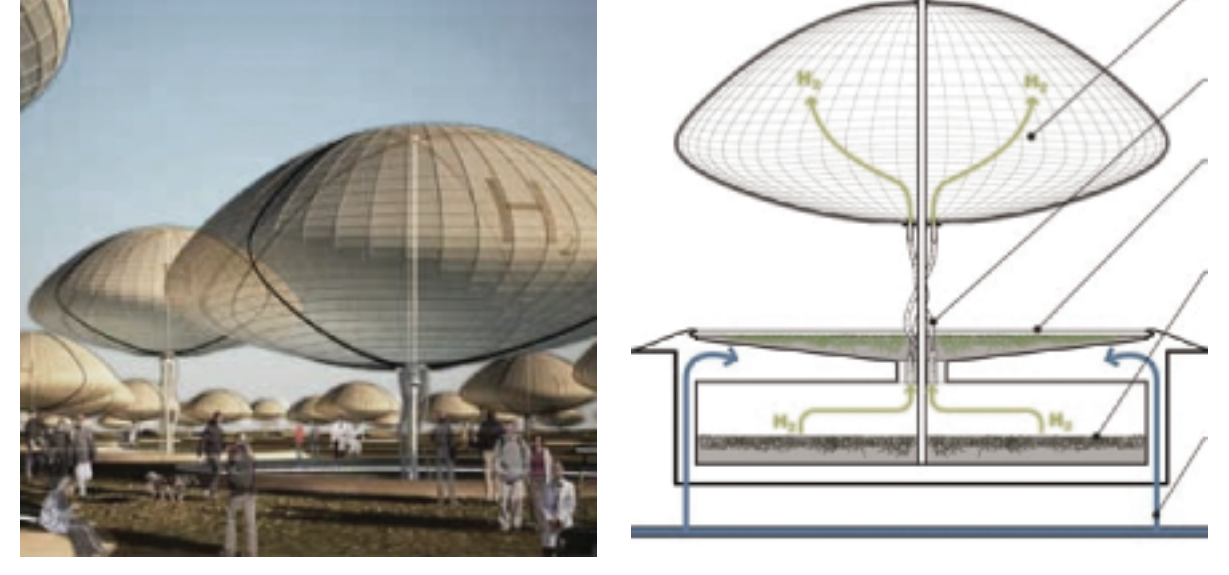
Indoor Farm	Dark grey bar	Light grey bar	Dark grey bar	Dark grey bar
-------------	---------------	----------------	---------------	---------------

La Tour Vivante
Rennes, France | SOA

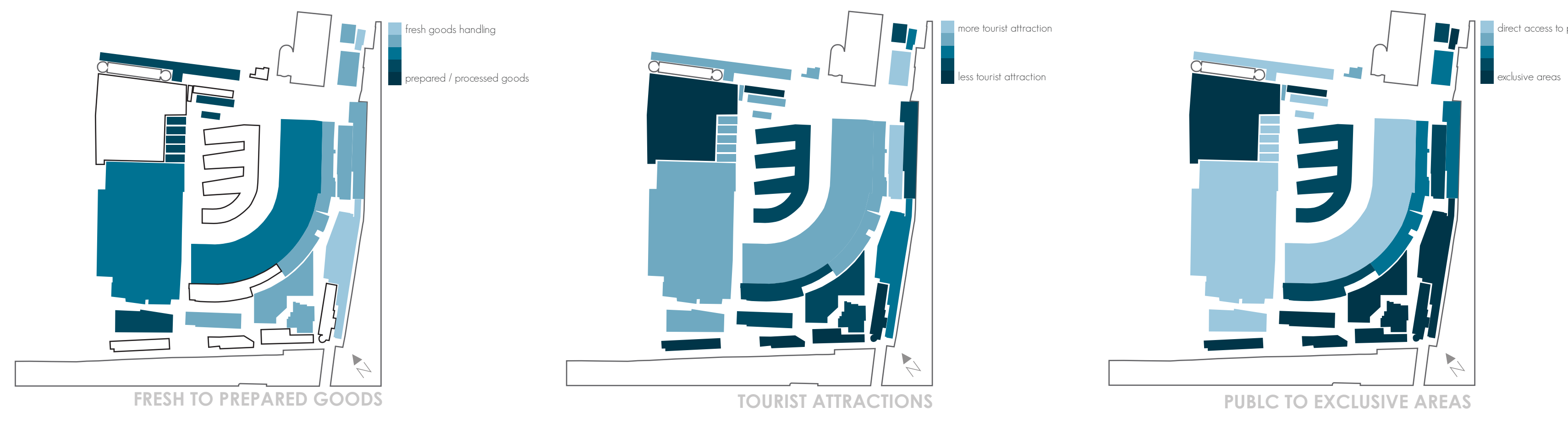


La Tour Vivante	Dark grey bar	Dark grey bar	Light grey bar	Dark grey bar
-----------------	---------------	---------------	----------------	---------------

Algae Hydrogen Balloon
Reykjavik, Iceland | 20/2 Collaborative



Algae Hydrogen Balloon	Dark grey bar	Dark grey bar	Dark grey bar	Dark grey bar
------------------------	---------------	---------------	---------------	---------------



- wholesale (auction)
- wholesale docks
- market (intermediate wholesale)
- produce
- offices
- cold storage
- retail
- parking

