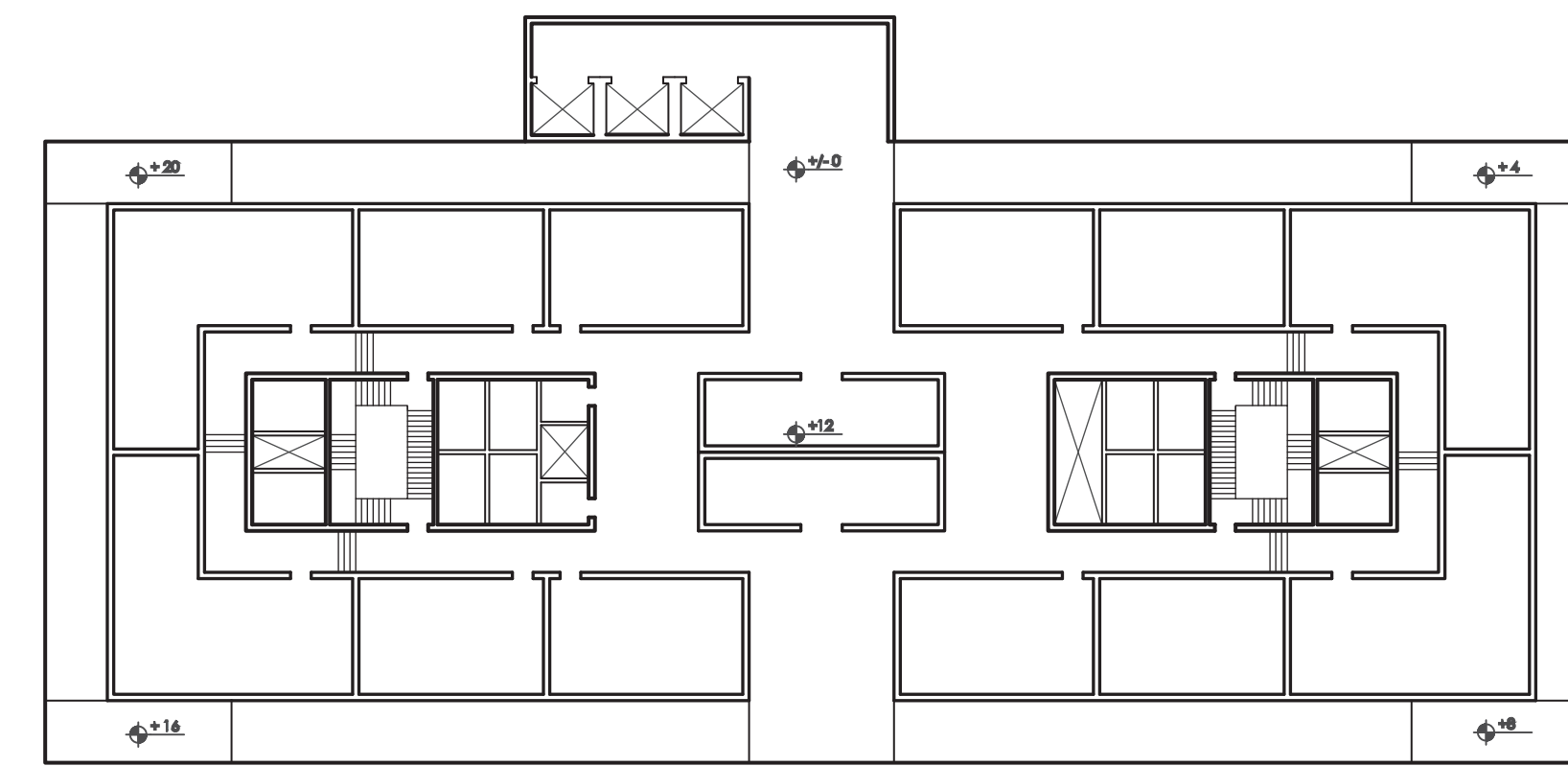
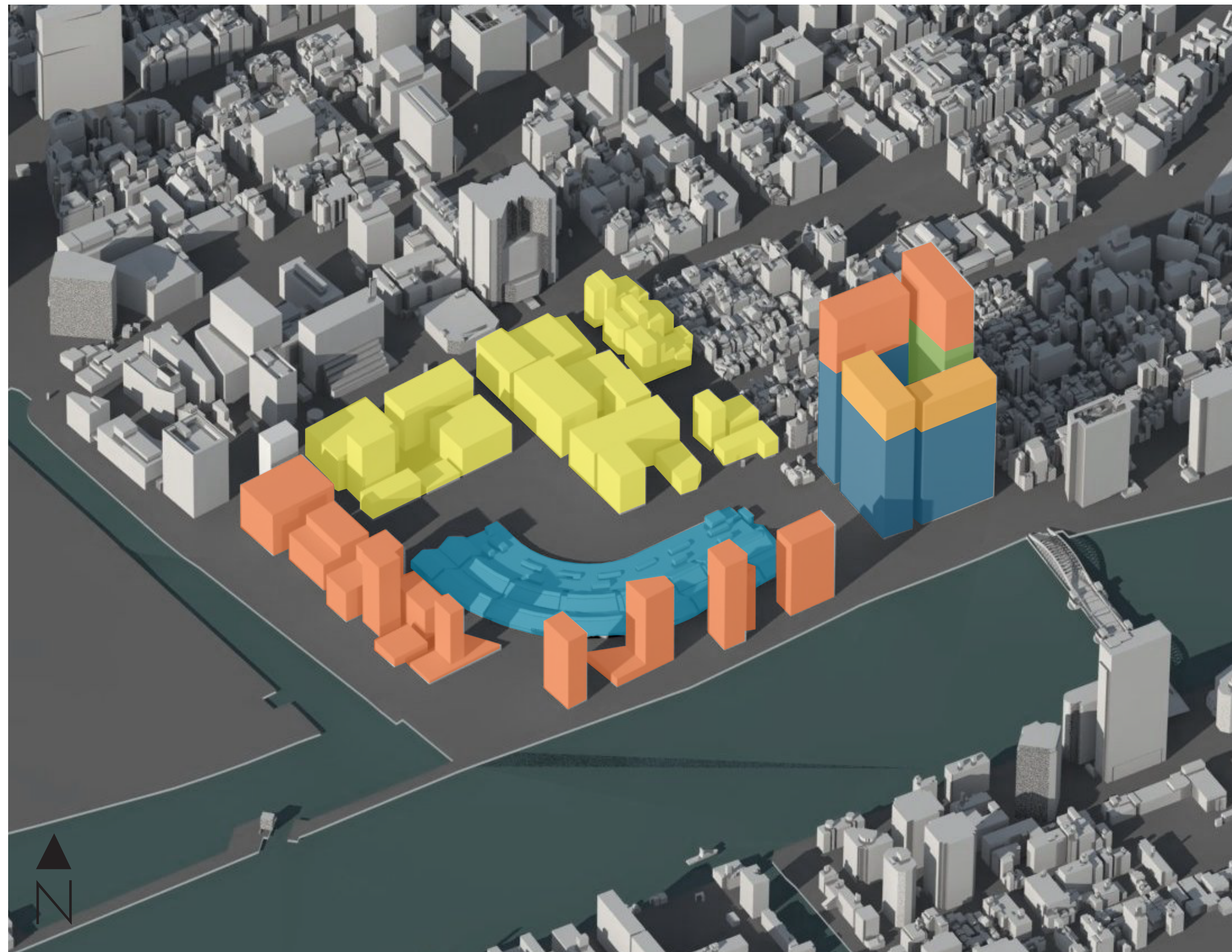


Tsukiji Wholesale Market _ Program Typologies

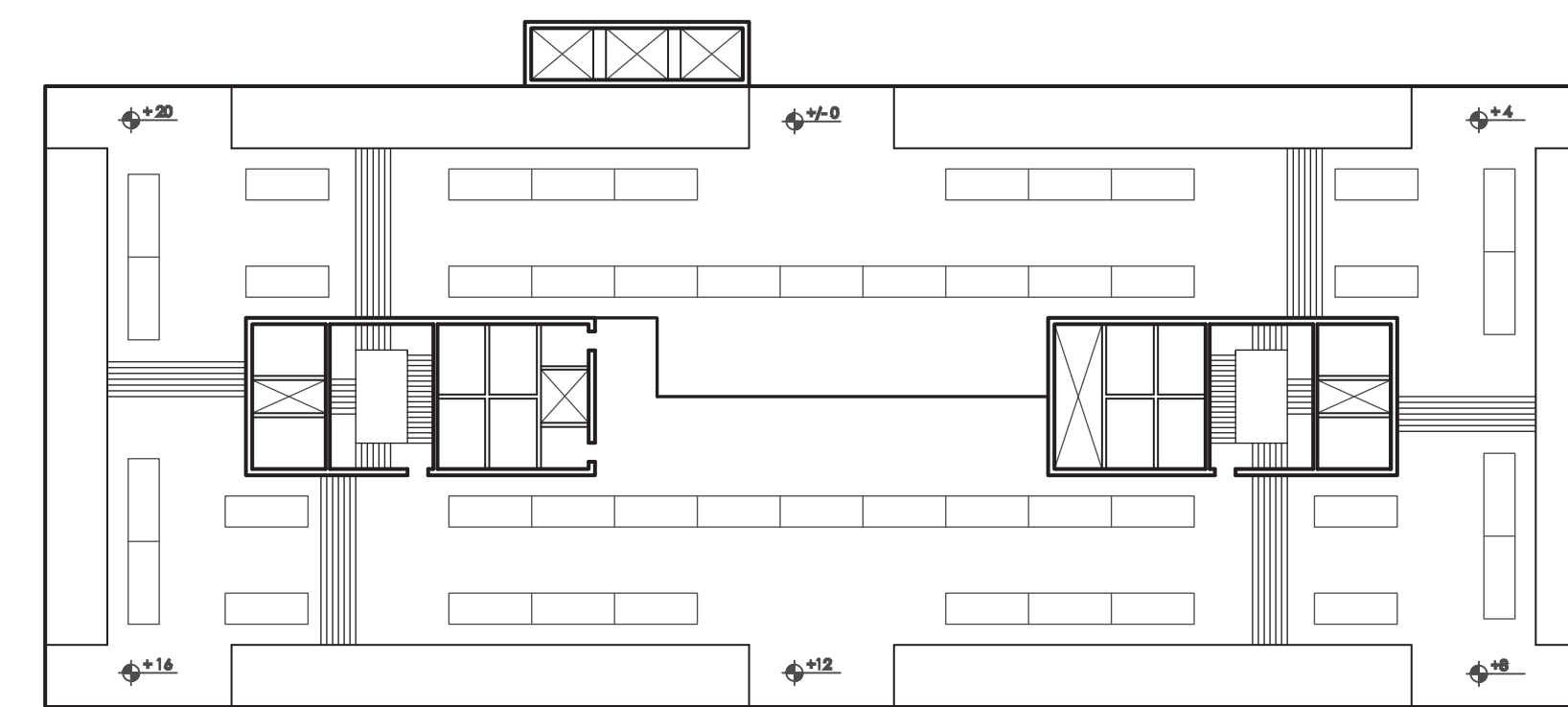
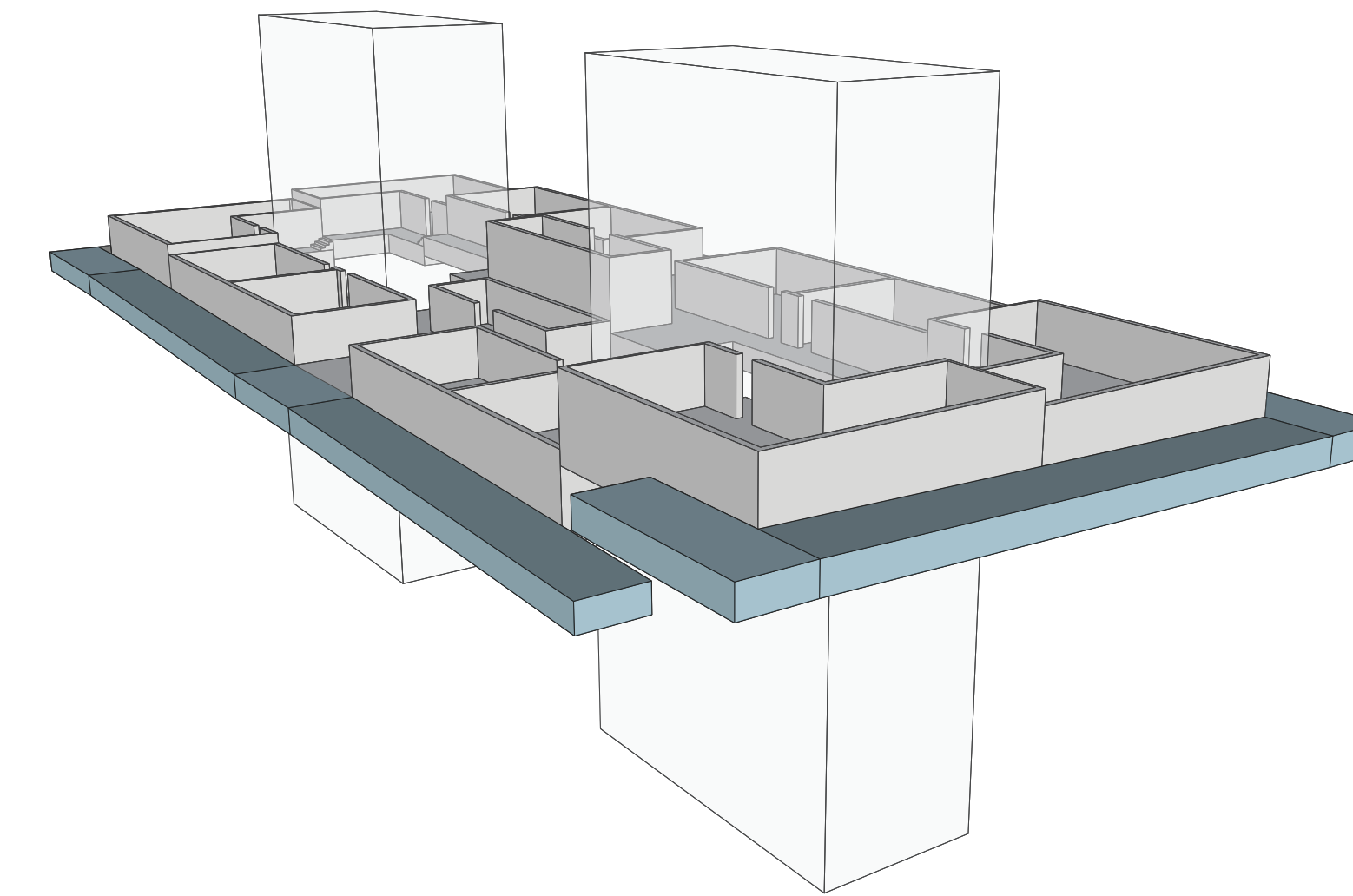
Emerson Stepp + Abha Mistry _ Arch Grad Studio V: Living Machines _ 12 14 2011

The proposed building complex consists of the current programs on site as well as additional programs that are integrated throughout the building and site. New programs on site include the extension of the surround urban community as well as housing and gardens along the waterfront. Maintaining the current intermediate market, this original part of the site is integrated with the new market tower as the programs continue up and into each quadrant of the complex.

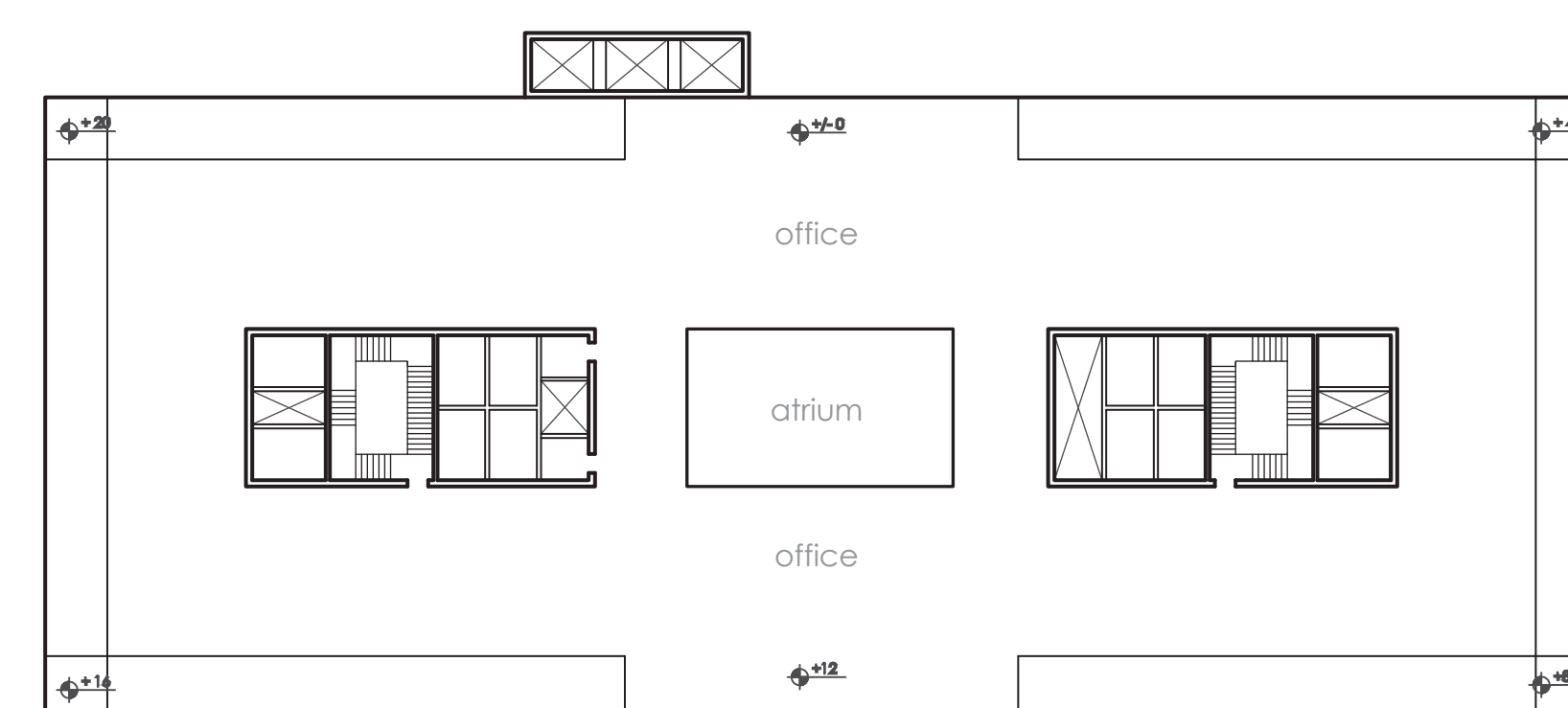
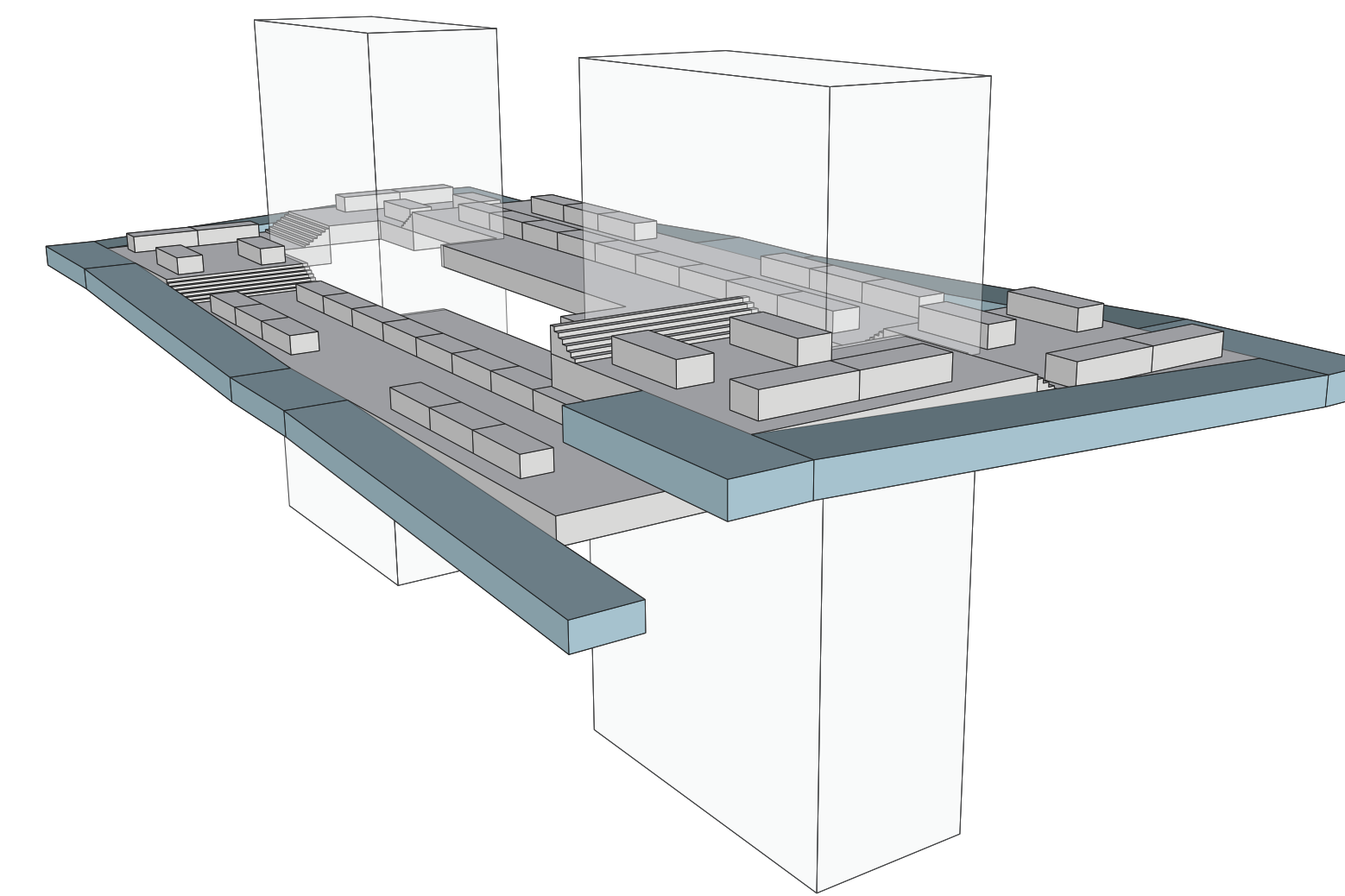
Taking the area needed, solar angles, and the fundamental needs for each program into consideration, the programs were arranged according these requirements within each of the four towers of the market complex. Housing, offices, the produce market, and farm all take a different form within this larger context to accommodate for program needs.



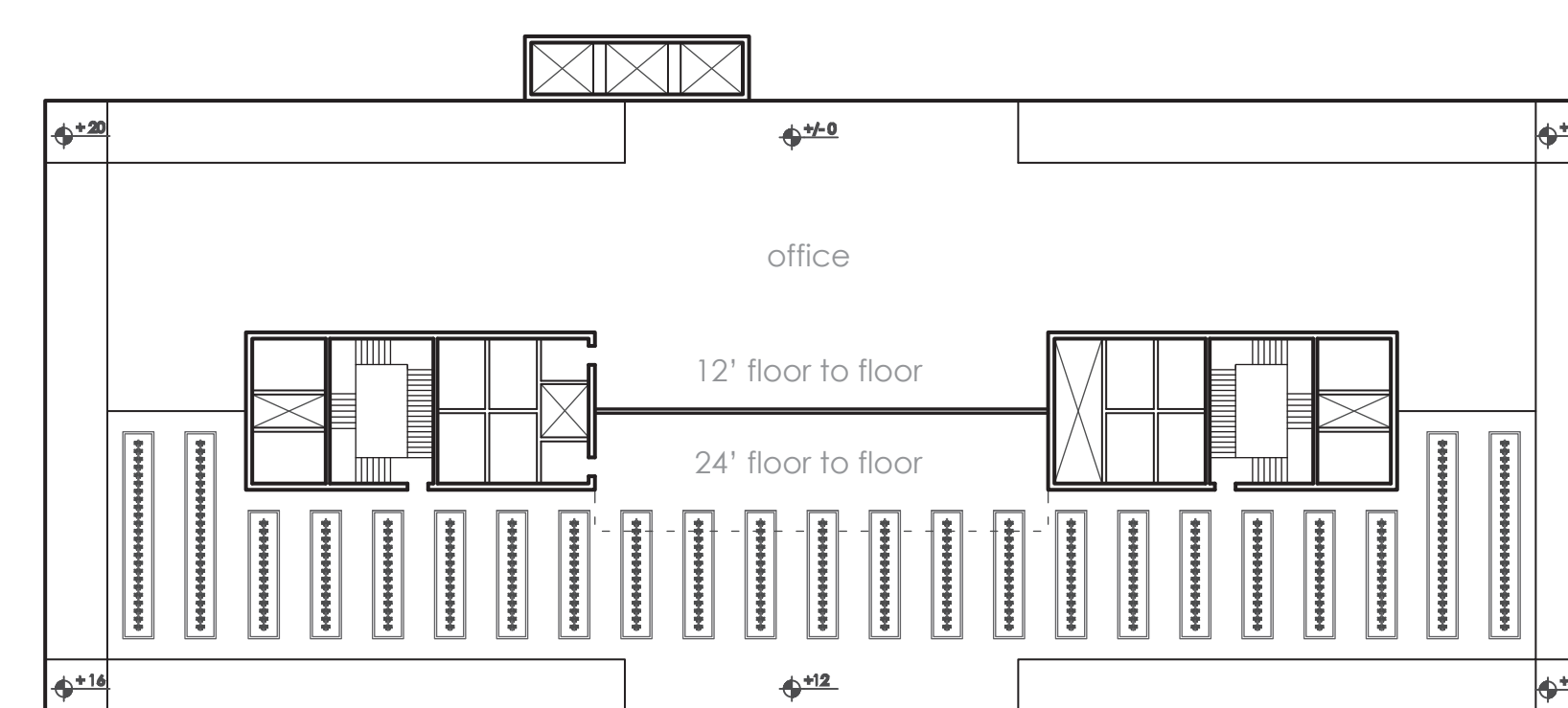
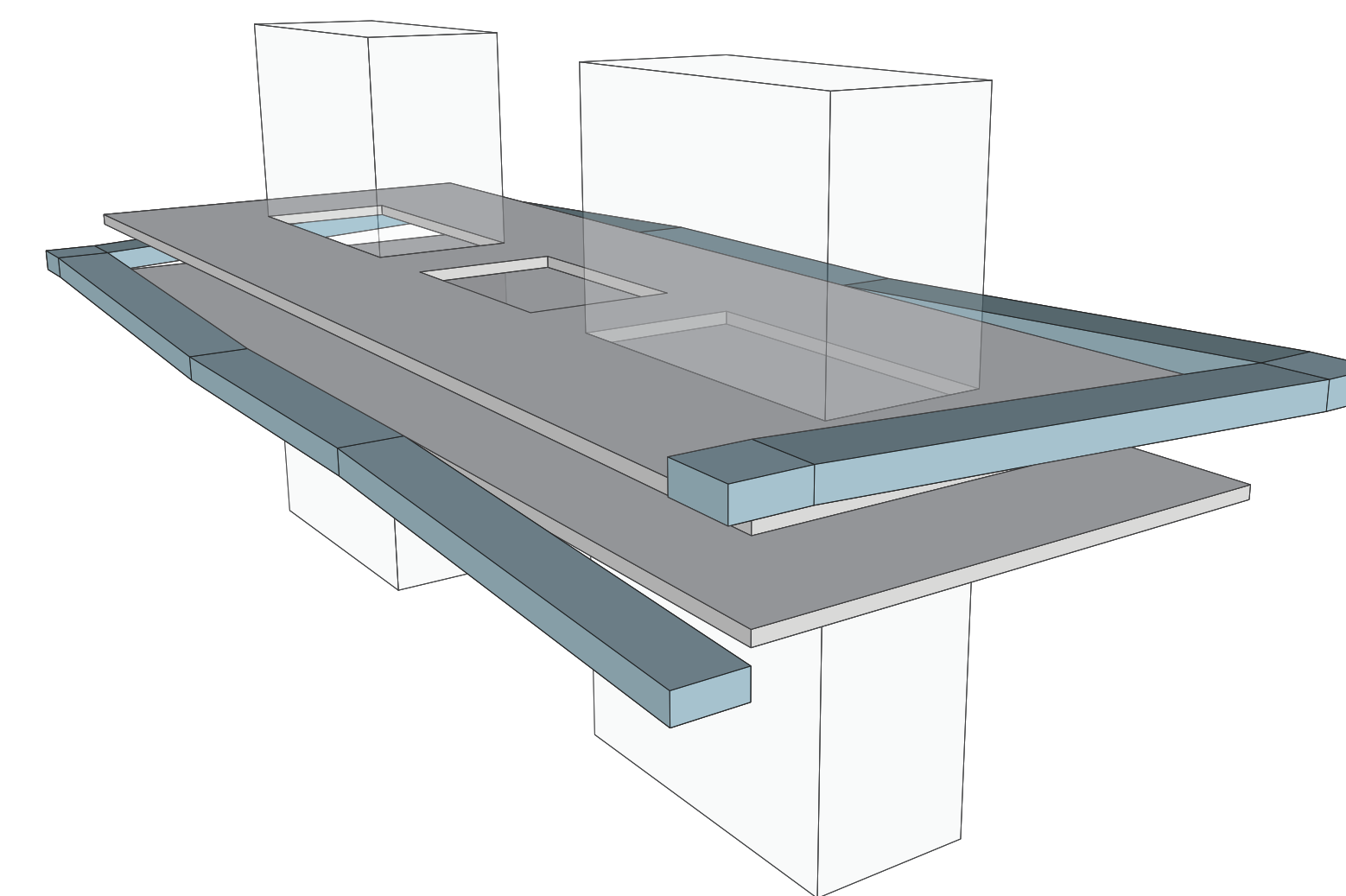
housing



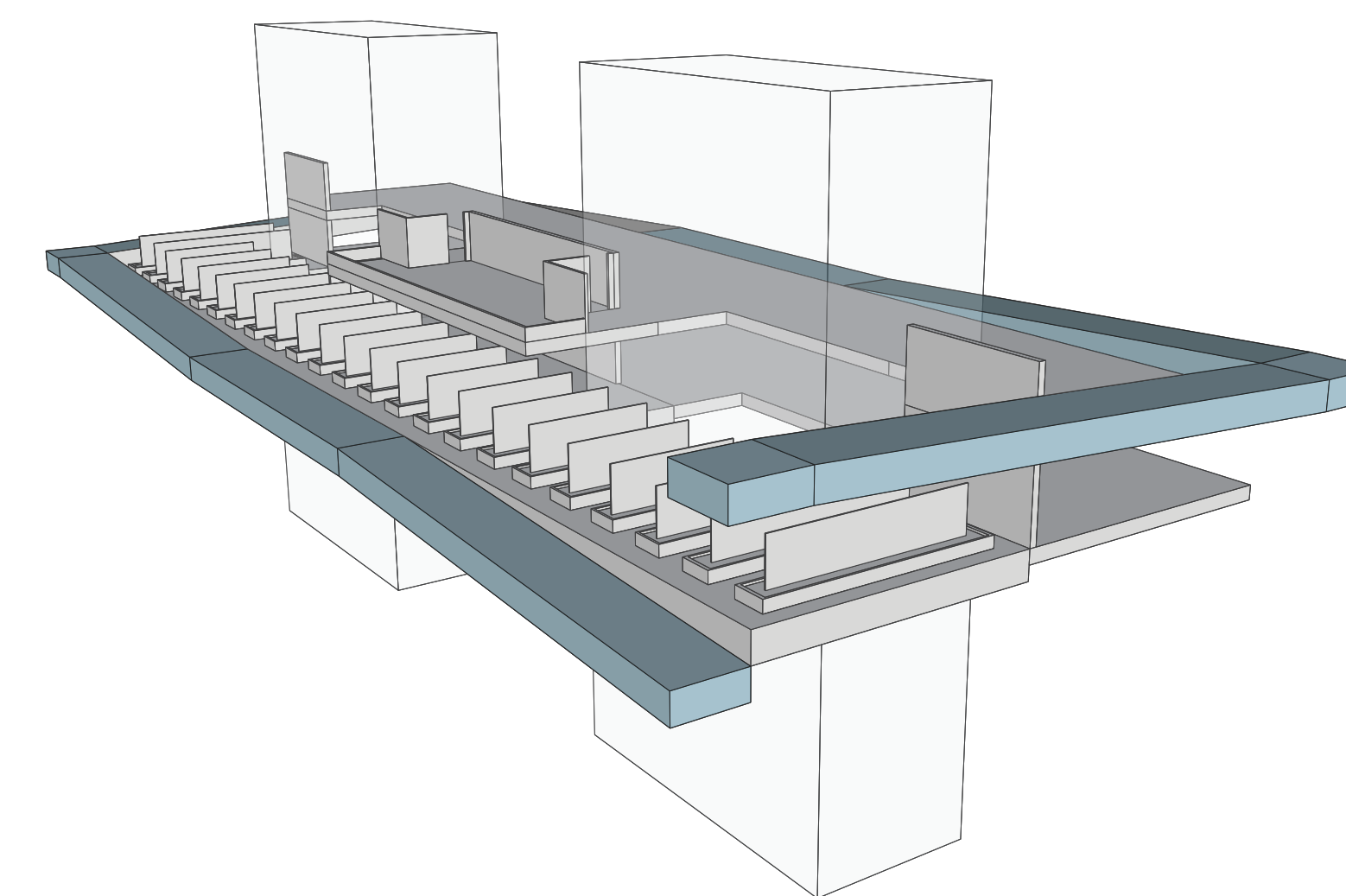
produce market



office



farm + office



ORIGINAL PROGRAM

Program	Area
total area of fish market	230,836 sq m
wholesale (auction)	28,000 sq m
wholesale docks	11,000 sq m
market (intermediate wholesale)	32,000 sq m
produce	24,000 sq m
offices	105,500 sq m
cold storage	35,000 sq m
retail	4,200 sq m
parking	170,000 sq m
Total	409,200 sq m

ADDED and REVISED PROGRAM

Program	Area	Fundamental Needs
added		
employee housing	35,000 sq m	60,000 sq m
farming	20,000 sq m	
retail / commercial	5,000 sq m	
fish		
wholesale (auction)	28,000 sq m	125,000 sq m
market (intermediate wholesale)	32,000 sq m	
loading docks	11,000 sq m	
cold storage	23,000 sq m	
offices	31,000 sq m	
produce		
wholesale (auction)	14,000 sq m	50,000 sq m
market (intermediate wholesale)	7,000 sq m	
loading docks	3,000 sq m	
cold storage	12,000 sq m	
offices	14,000 sq m	
offices + admin		
offices	26,000 sq m	60,000 sq m
storage	30,000 sq m	
facilities management	1,000 sq m	
ministry of health	3,000 sq m	
parking	111,000 sq m	
Total	406,000 sq m	