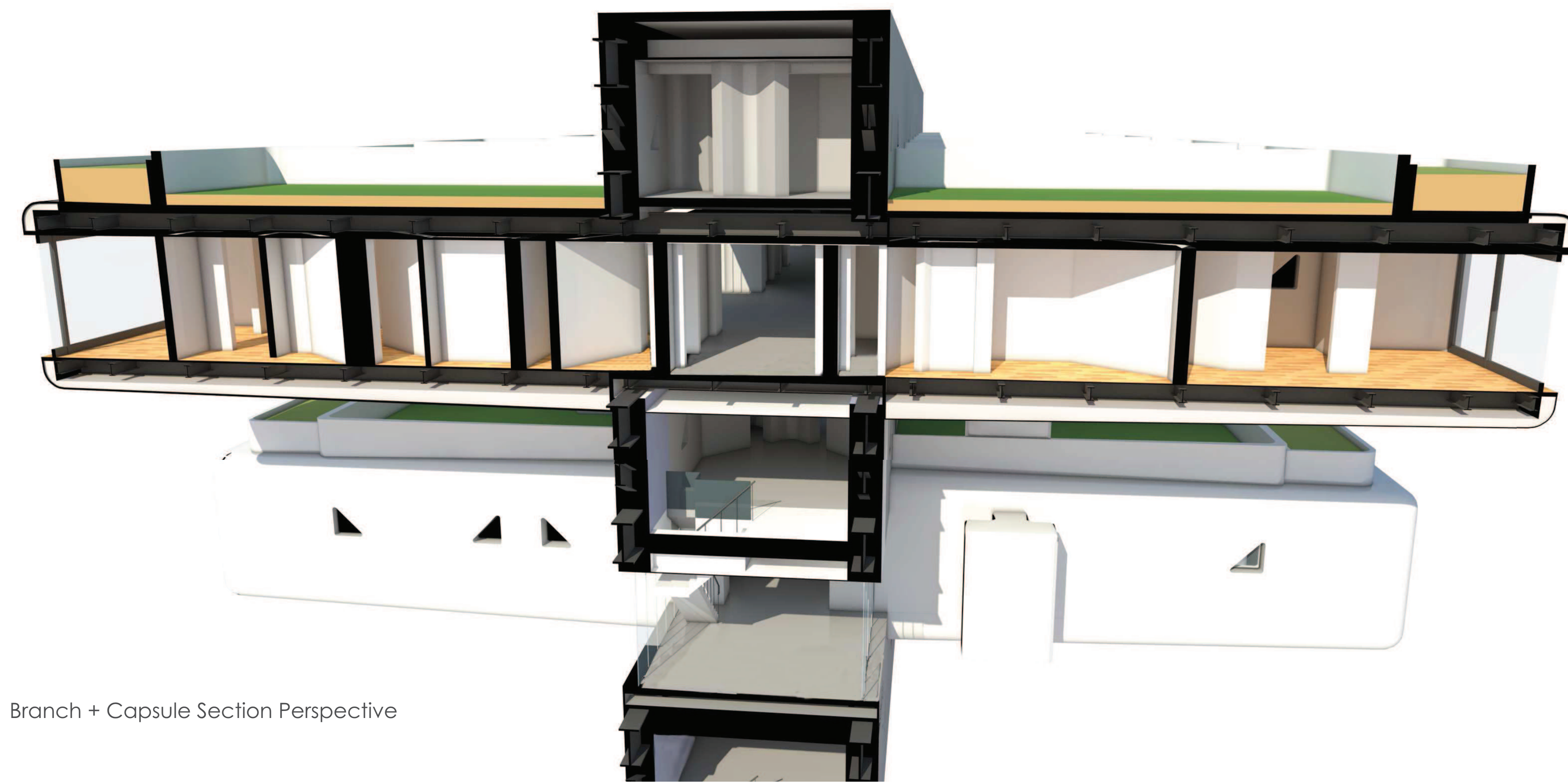


City in the Air Arata Isozaki Structural Concept

The City in the Air is supported by a core 20 meters in diameter with branches cantilevering from it. The capsules are nestled between the branches and fastened together via bracketing system from which Isozaki took inspiration.

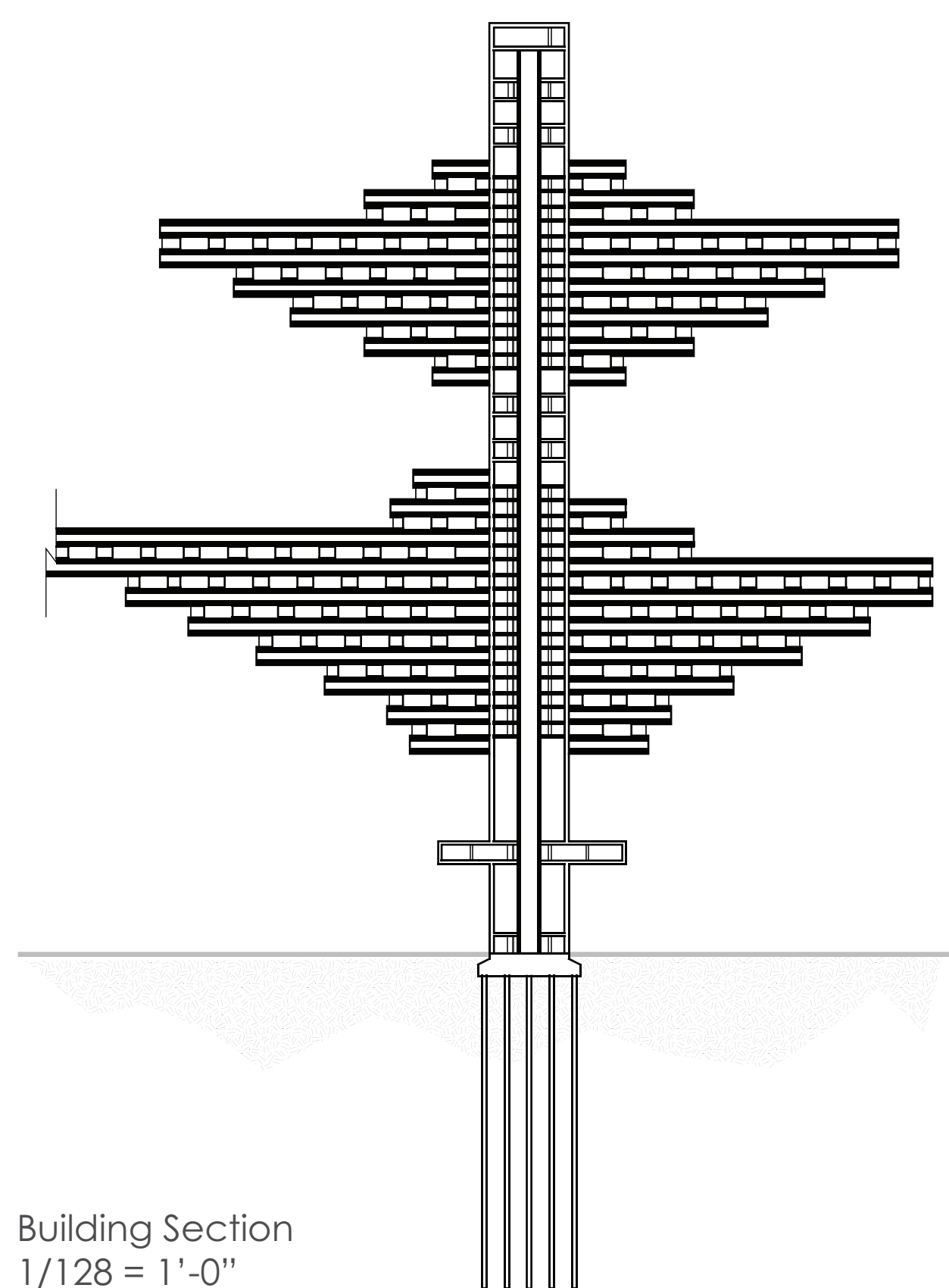
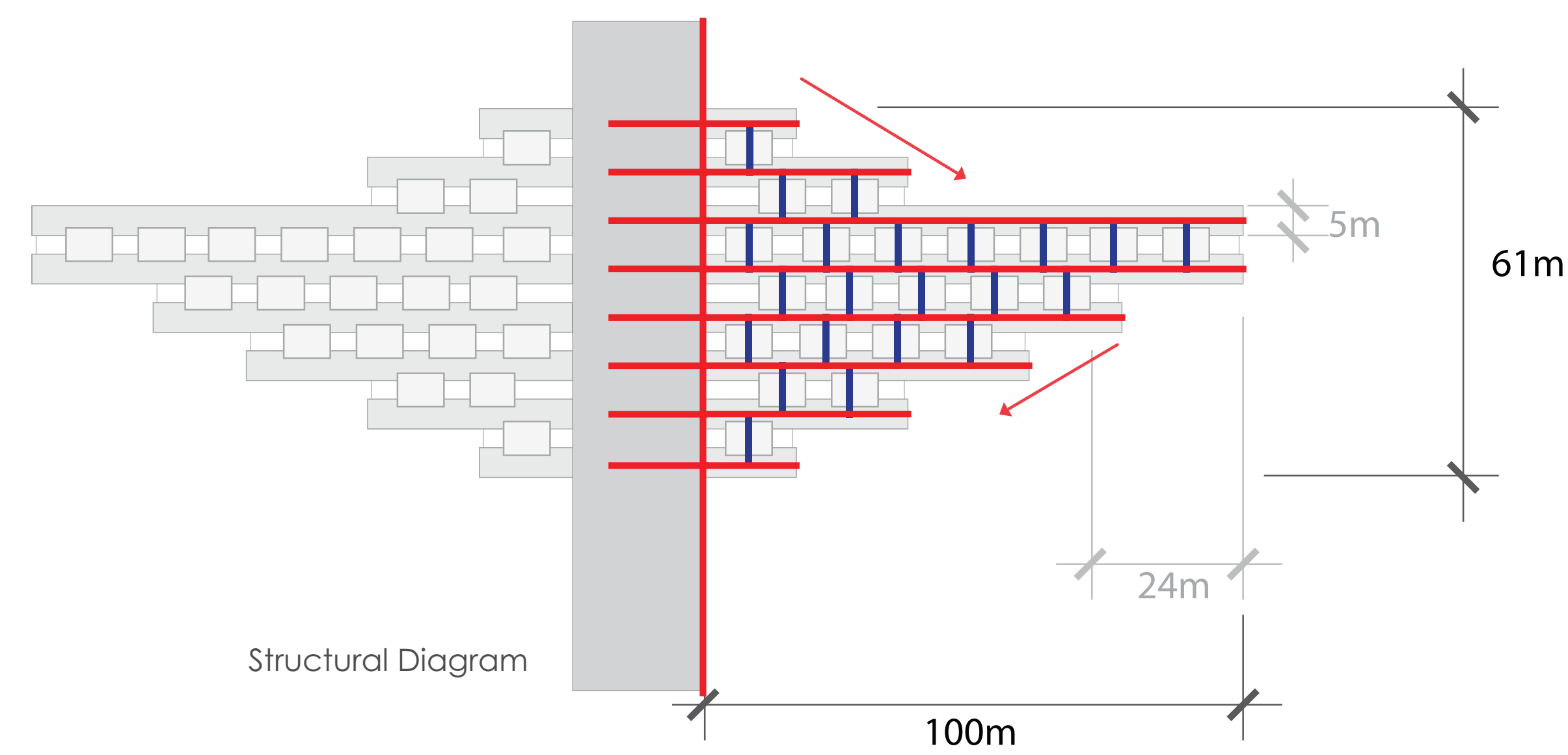
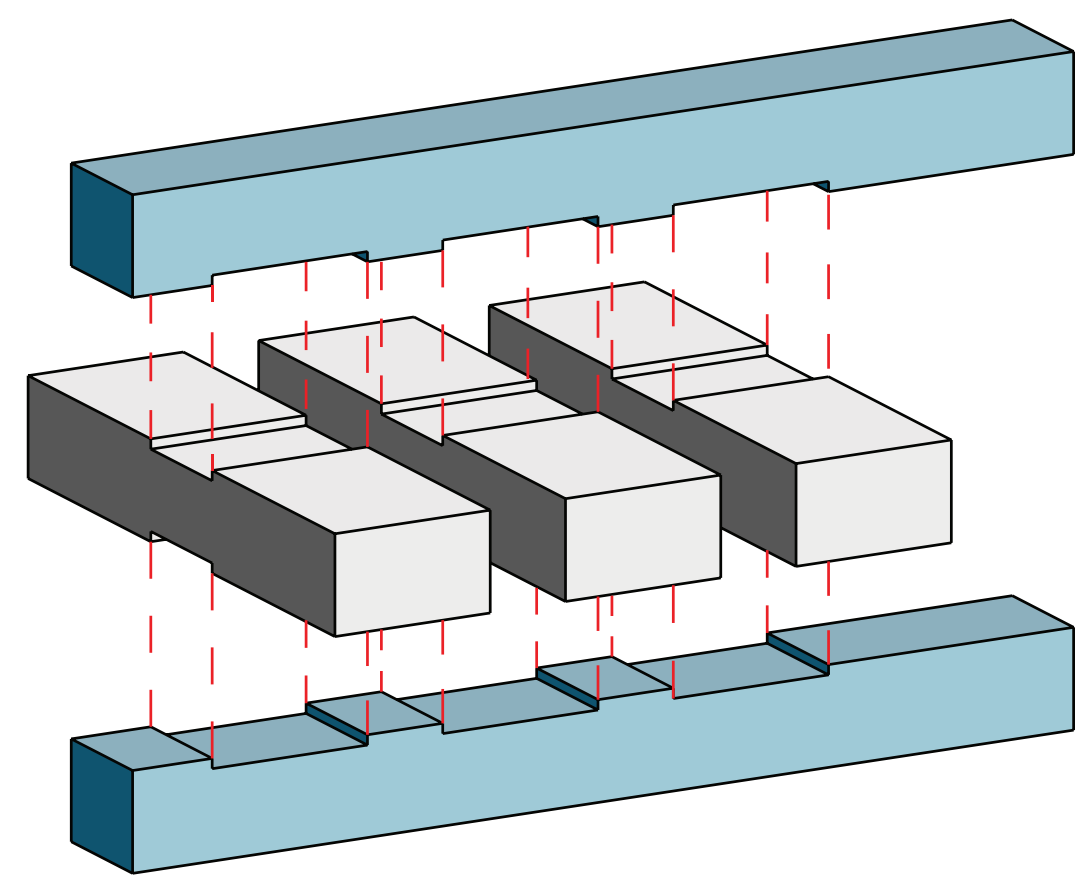
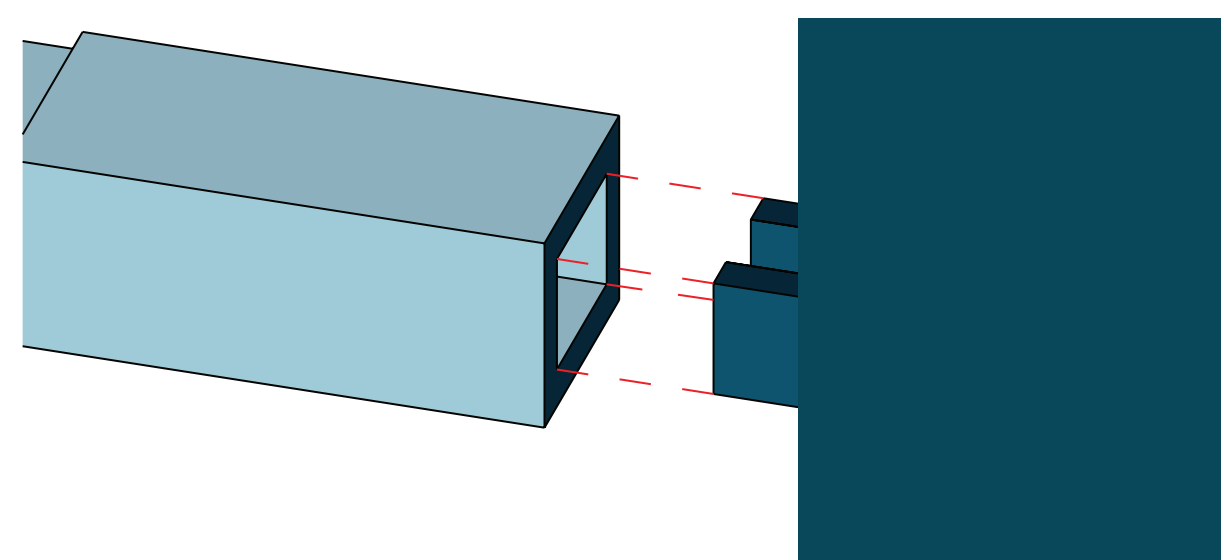
The structural integrity of the buildings lie in all the units working together to form one strong cantilever instead of several weaker ones. This is because of the way the branches and capsules are arranged along the length of the core.



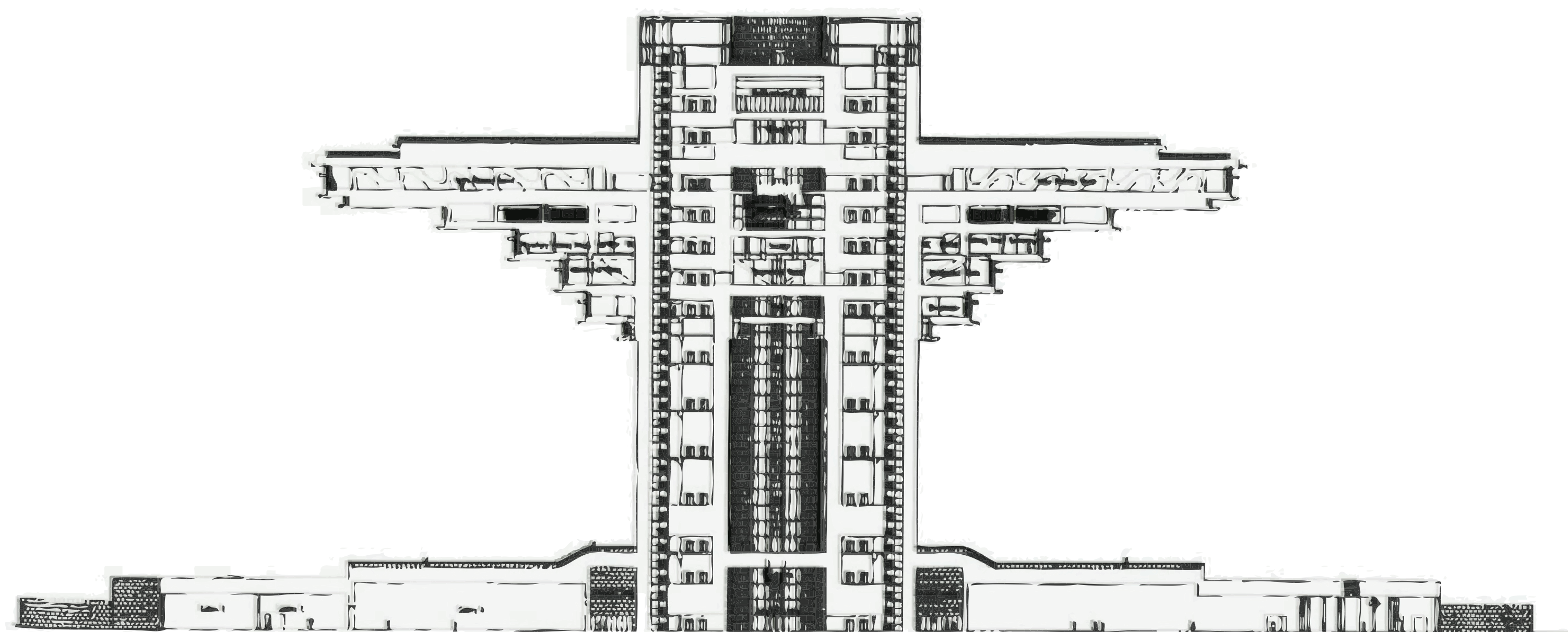
Branch + Capsule Section Perspective

Connections | Bracket System

above: Core to Branch / below: Branch to Capsule



Building Section
1/128 = 1'-0"



Qatar National Library | precedent: City in the Air



View from Ground Level



View of Core from Ground Level