

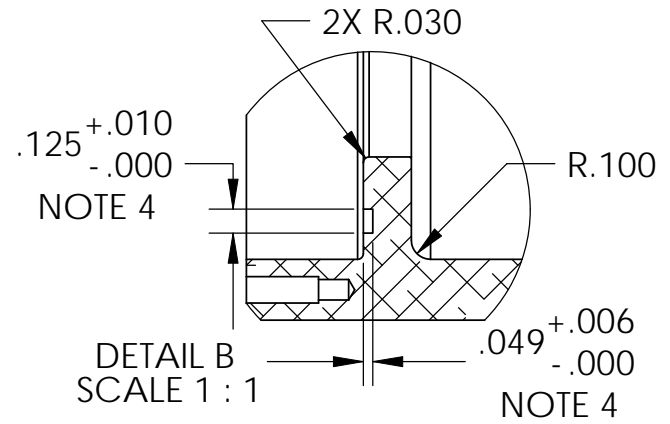
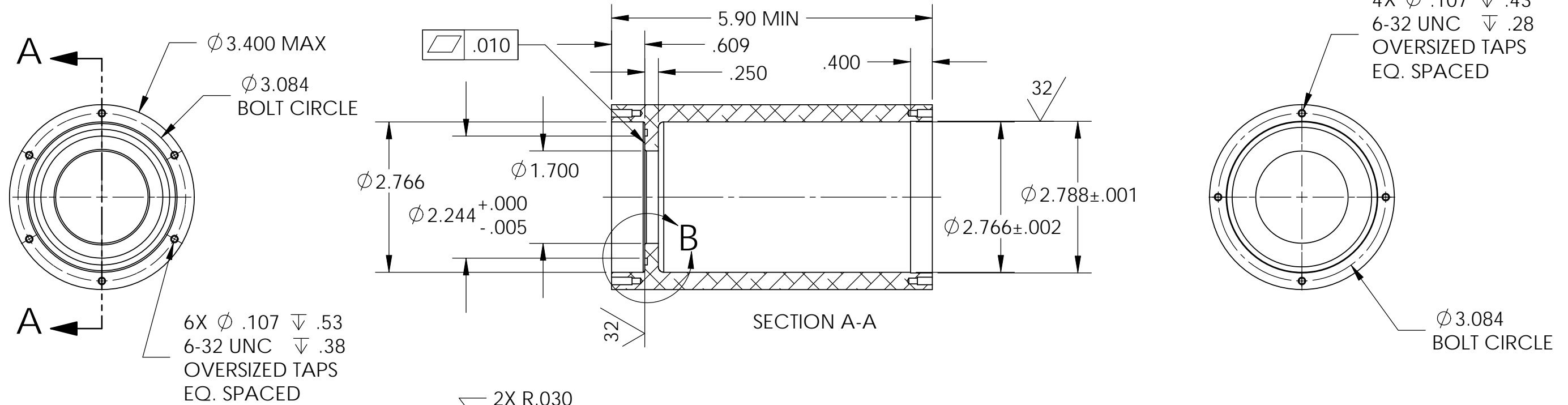
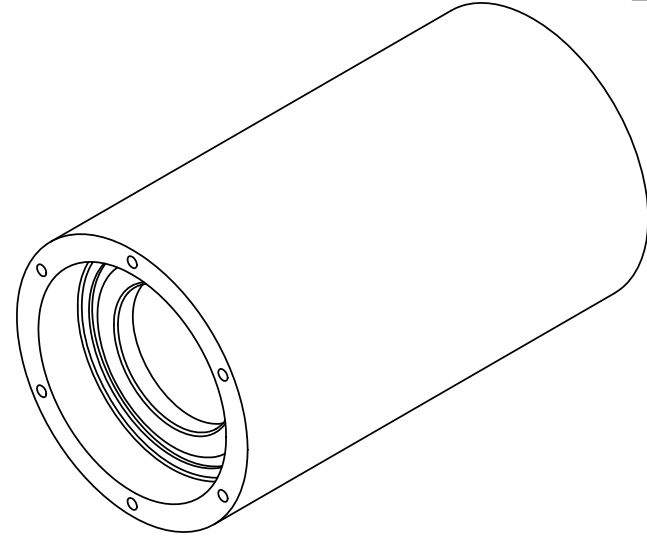
PROPRIETARY AND CONFIDENTIAL


THE INFORMATION CONTAINED IN THIS DRAWING IS THE SOLE PROPERTY OF SIDUS SOLUTIONS LLC. ANY REPRODUCTION IN ANY PART OR AS A WHOLE WITHOUT THE WRITTEN PERMISSION OF SIDUS SOLUTIONS LLC. IS PROHIBITED.

NOTES: UNLESS OTHERWISE SPECIFIED

- 1. MATERIAL: 6061-T6 ALUMINUM
- 2. FINISH: HARD BLACK ANODIZE PER MIL-A-8625F
- 3. BREAK SHARP EDGES AND DEBURR .005 TO .015
- 4. SURFACE FINISH RMS 64 OR GREATER
- 5. ALL DIAMETERS CONCENTRIC WITHIN .001
- 6. DIMENSIONS ARE PRIOR TO FINISH
- 7. WRAP PARTS AFTER MANUFACTURING TO PREVENT DAMAGE

REVISIONS				
REV.	DESCRIPTION	DATE	REVISED	APPROVED
A	INITIAL RELEASE	9/24/2010	DP	JG



UNLESS OTHERWISE SPECIFIED DIMENSIONS ARE IN INCHES WITH THESE TOLERANCES:  DECIMAL .XX $\pm$ .01 .XXX $\pm$ .005  ANGLE $\pm 1.0^\circ$	APPROVALS	DATE	
	DRAWN D. PROCTOR	9/17/2010	
	CHECKED		
	ENG APPR J. GARDINER	9/27/2010	
INTERPRET GEOMETRIC TOLERANCING PER: ANSI-Y14.5M	COMMENTS:		HD CAMERA HOUSING
MATERIAL REFER TO NOTE 1	CAD GENERATED DRAWING, DO NOT UPDATE MANUALLY		SIZE <b>B</b>
FINISH			DWG. NO. 904027101-01
DO NOT SCALE DRAWING			REV <b>A</b>
			SCALE: 1:2   PART FILE: PRT   SHEET 1 OF 1