

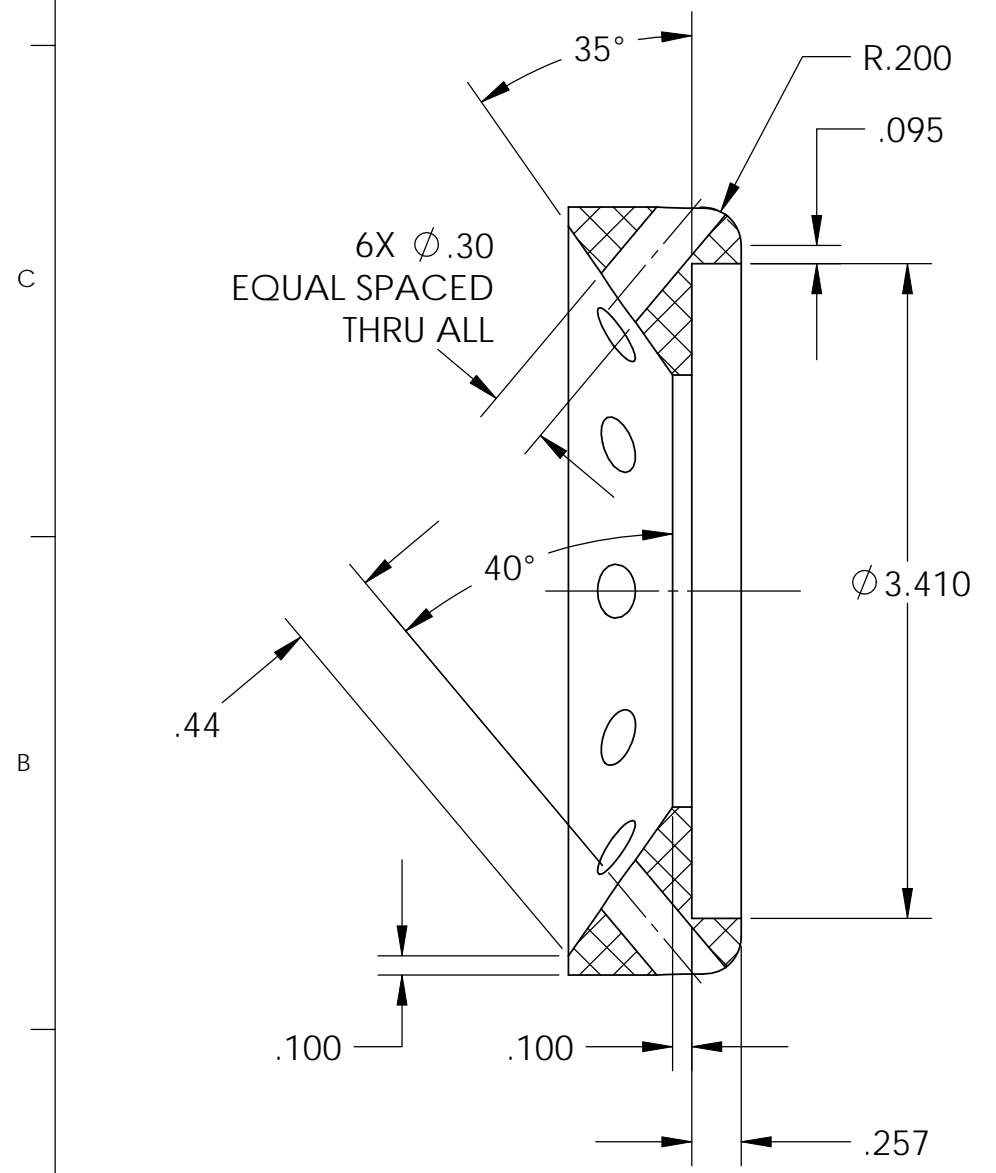
PROPRIETARY AND CONFIDENTIAL

THE INFORMATION CONTAINED IN THIS DRAWING IS THE SOLE PROPERTY OF SIDUS SOLUTIONS LLC. ANY REPRODUCTION IN ANY PART OR AS A WHOLE WITHOUT THE WRITTEN PERMISSION OF SIDUS SOLUTIONS LLC. IS PROHIBITED.

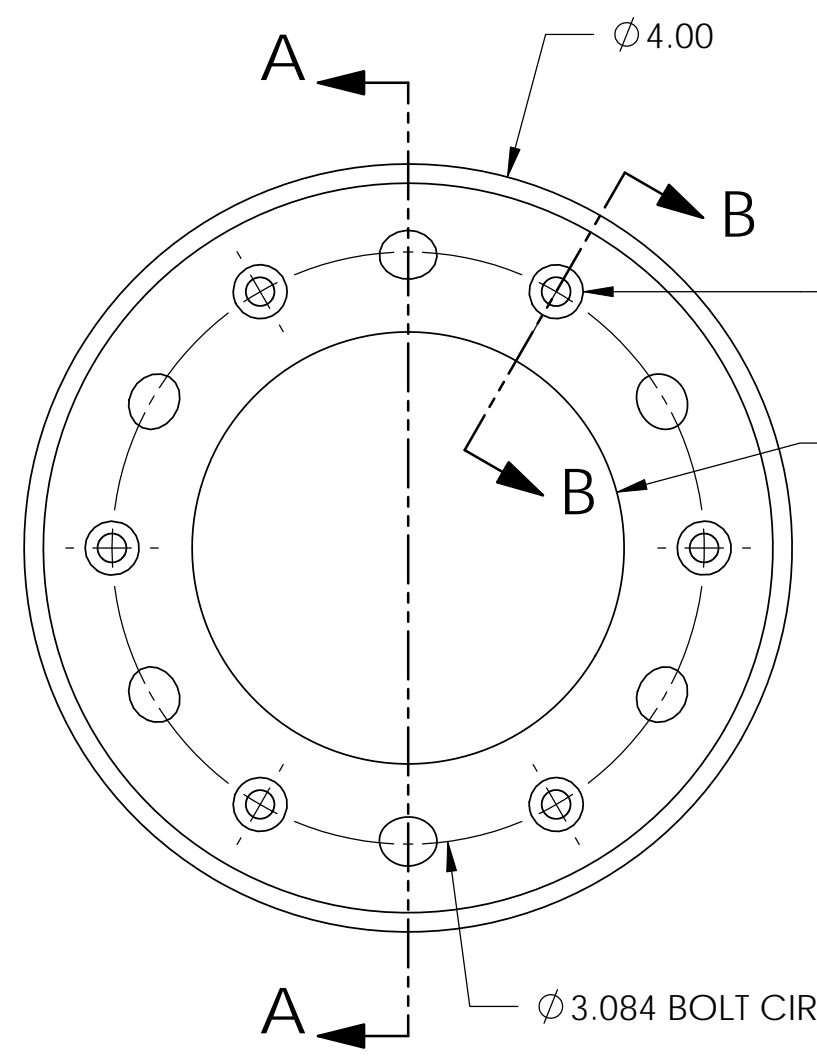
NOTES: UNLESS OTHERWISE SPECIFIED

1. MATERIAL: BLACK DELRIN
2. FINISH: RMS 64 OR BETTER
3. ALL DIAMETERS CONCENTRIC WITHIN .001
4. BREAK SHARP EDGES AND DEBURR .005 TO .015
5. WRAP PARTS AFTER MANUFACTURING TO PREVENT DAMAGE

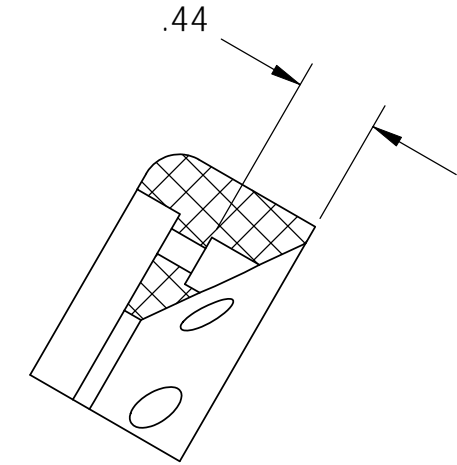
REVISIONS				
REV.	DESCRIPTION	DATE	REVISED	APPROVED
A	INITIAL RELEASE	9/28/2010	DP	JG



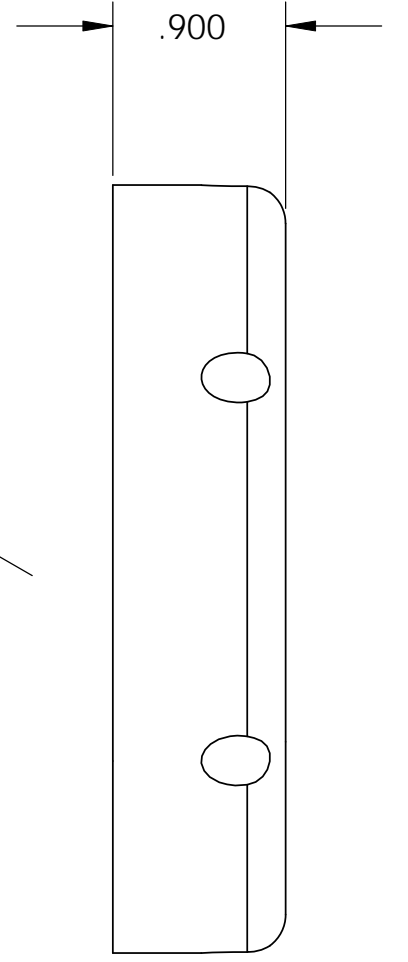
SECTION A-A




6X ϕ .150 THRU ALL
 \square ϕ .281



SECTION B-B



UNLESS OTHERWISE SPECIFIED DIMENSIONS ARE IN INCHES WITH THESE TOLERANCES: DECIMAL ANGLE .XX ± .01 ±1.0° .XXX ± .005	APPROVALS	DATE		
	DRAWN D. PROCTOR	9/17/2010		
	CHECKED			
	ENG APPR J. GARDINER	9/28/10		
INTERPRET GEOMETRIC TOLERANCING PER: ANSI-Y14.5M	COMMENTS:	PORT RETAINER		
MATERIAL REFER TO NOTE 1	CAD GENERATED DRAWING, DO NOT UPDATE MANUALLY	SIZE B	DWG. NO. 904027107-05	REV A
FINISH		SCALE: 1:1	PART FILE: PRT	SHEET 1 OF 1
DO NOT SCALE DRAWING				