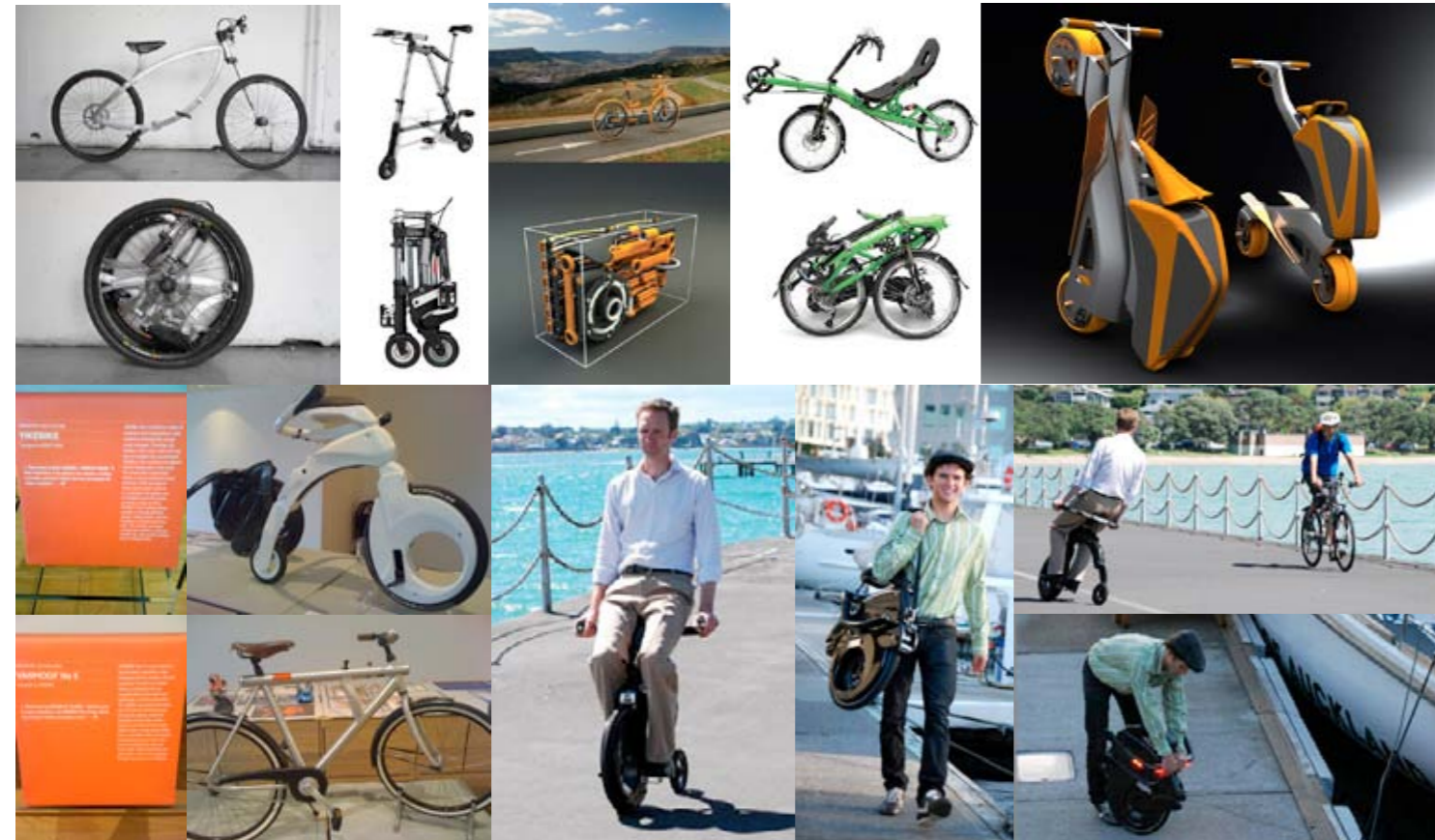


..Foldable Bikes..

After the first tutorial session, I was advised to focus the design on the tricycle stage, the part which made it different from existing travel systems. I looked into bike technology and found folding bikes particularly useful when designing the frame. I looked into a range of products, and on a visit to the London design museum, discovered the Yikebike, the smallest and lightest electric bike in the world. It is extremely compact, folds in on itself, and very sustainable. Thorough research gave me sufficient means to develop my frame.



..Alternative Bike Frames..

I expanded my research into other bike frames and looked at the positioning of the seat. I wanted to use the curves of the frame to hold the baby, rather than adding more frame arms.



..Existing Concepts..

When researching existing products, I came across a range of concept designs similar to mine. The market is highly developed and although this put me off at first, I realised the basis behind my design was different and I could potentially do it better. I learnt from the folding mechanisms, transformable functions and user interactions of the concepts, but also found reasons why the concepts are not yet branded products.

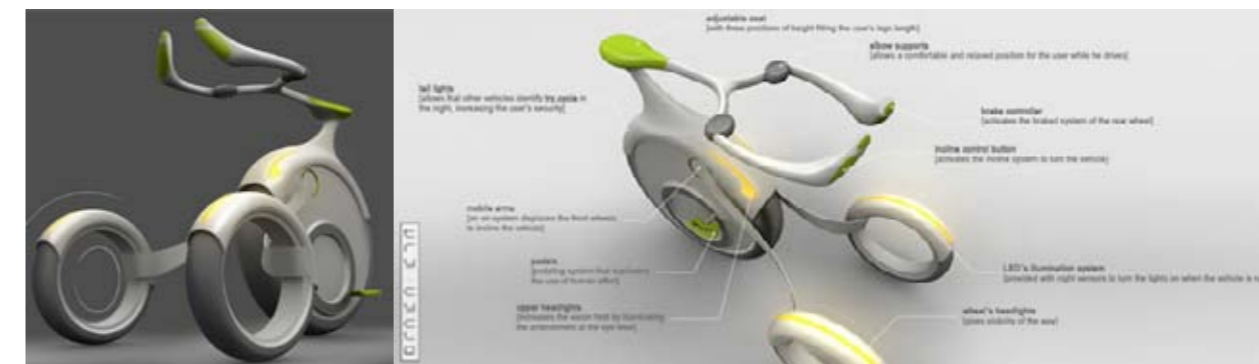


ONUO Electric Tricycle for the elderly



The Stroller, multi- functional protective pushchair

I think 'The Stroller' is too close to the ground for a baby, does not look comfortable, and could not fold up for car storage.



Try-cycle new tricycle concept

When I came across the 'BabyOom' it appeared to be very similar to where my product was heading. However I discovered flaws; there would be a large gap of time between the child growing out of the pushchair and being ready to cycle the small bike. I intended my product to grow with the child in each stage. Also the steering did not appear to have been fully considered.



BabyOom Pram, Stroller and Shopping Cart