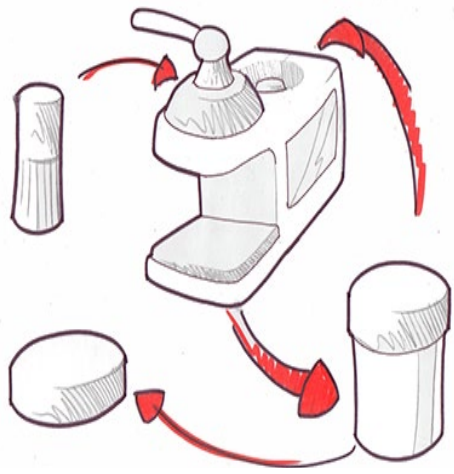


# CONCEPT REQUIREMENTS

based on the insight concepts were developed & consolidated



## SYSTEM INTEGRATION

the measurement system needs to be integrated in the working situation at a construction site.



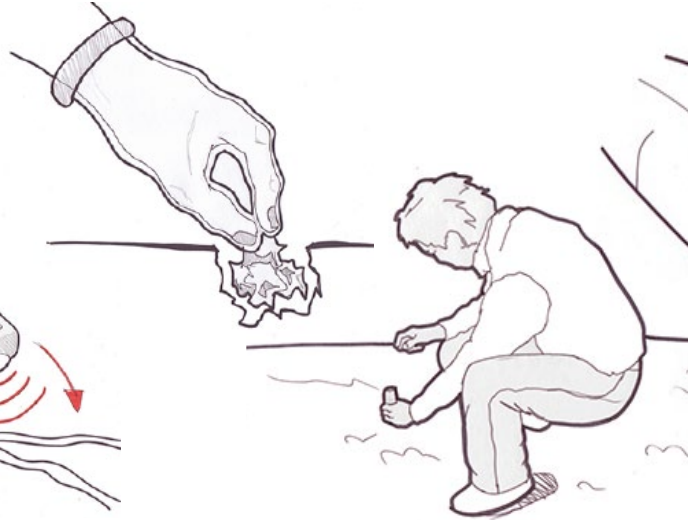
## ISOLATION

the risk to falsify the measurement with touching the probe can be reduced by isolating the sample



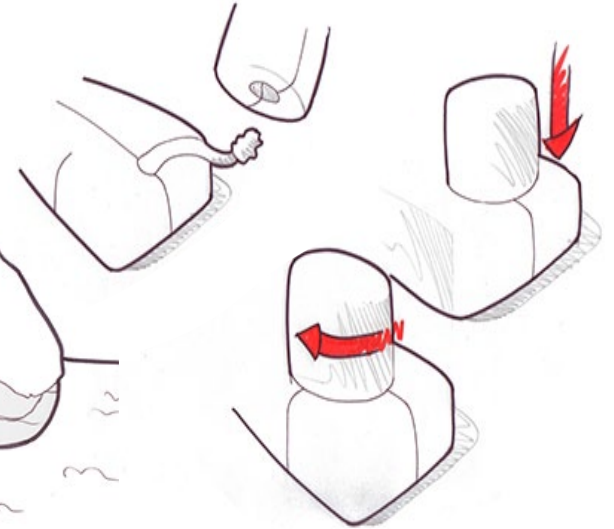
## DIGITALISATION

the measurement gains a higher accuracy with digitalising the measurement



## ERGONOMICS

the sample removal and handling of the device have to address the usage situation



## SIMPLIFICATION

the various individual steps have to be combined into a cohesive workprocess