

Objective: design housing for a wireless non-contact fever screening system used for infectious diseases, mass outbreaks to home use. Electronic essential supplied by engineers.

Socially

Behavior of people in large groups, school, airports, sporting events...

- checkpoint
- personal space
- Waiting period expected /unexpected

How diseases are transmitted

Intimidation, finding ways around intimidating shaped

- using friendly gestures
- avoiding a "pistol grip" form

Economically

Small Scale

- person problems due to an epidemic

Large Scale

- social problems due to an epidemic

Cost to operate and produce scanner

Cost of an epidemic

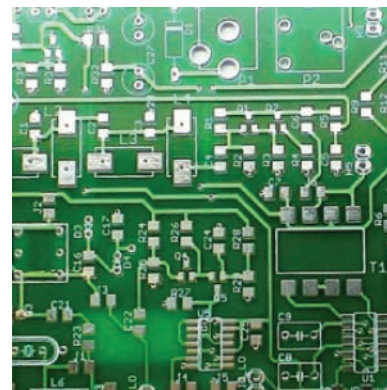
Technology

History of temperature reading

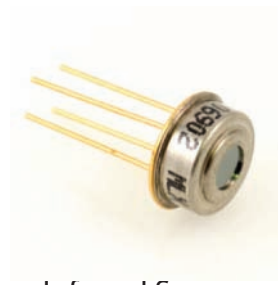
Comparison and production

Existing Products

How it works, the inner pieces



PCB



Infrared Sensor



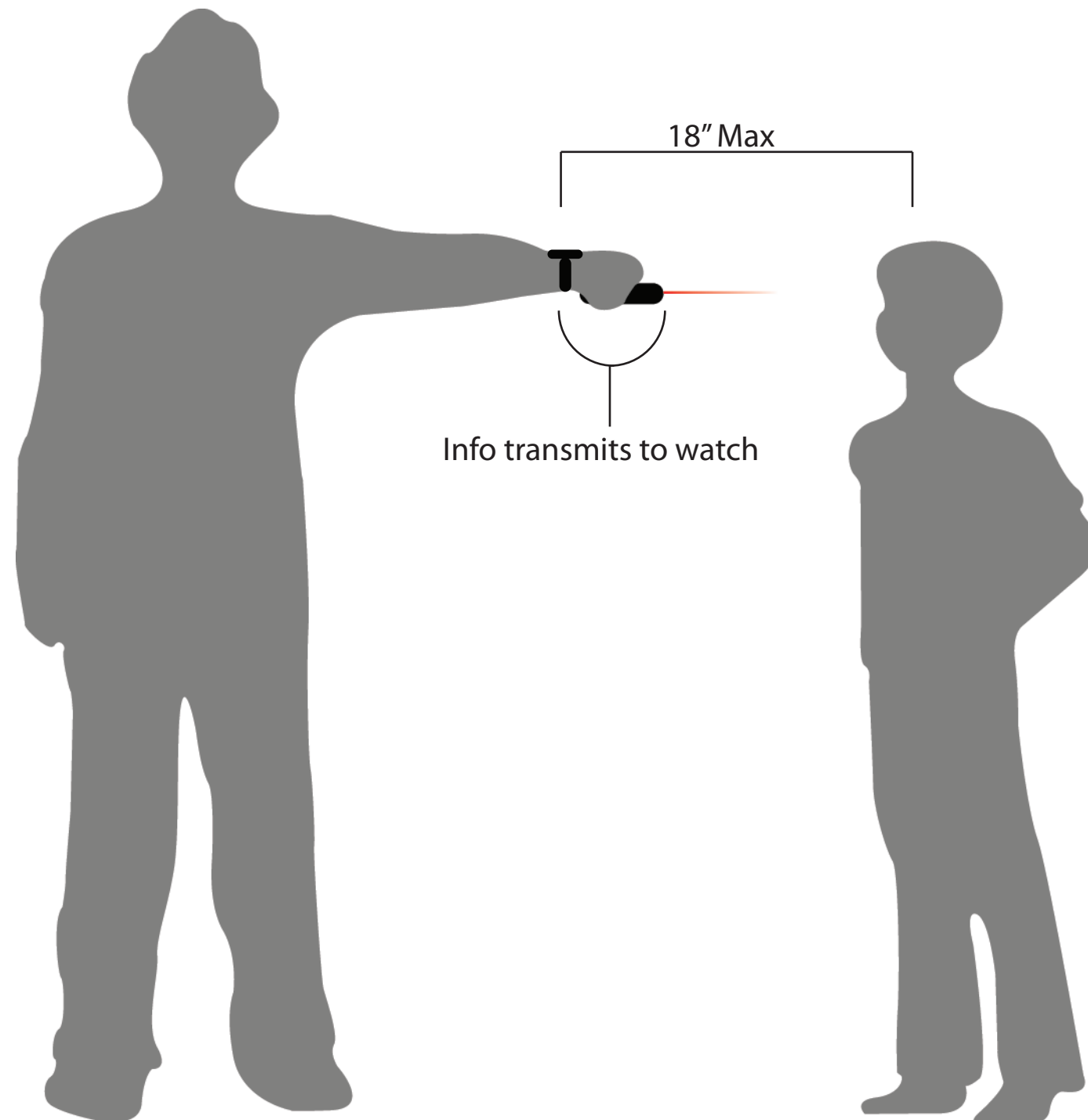
Watch/LCD



Receiver

Constraints:

- Scan from a maximum of 18 inches from patient
- Wireless transmission to device (wrist watch provided by client)



precision without **contact**