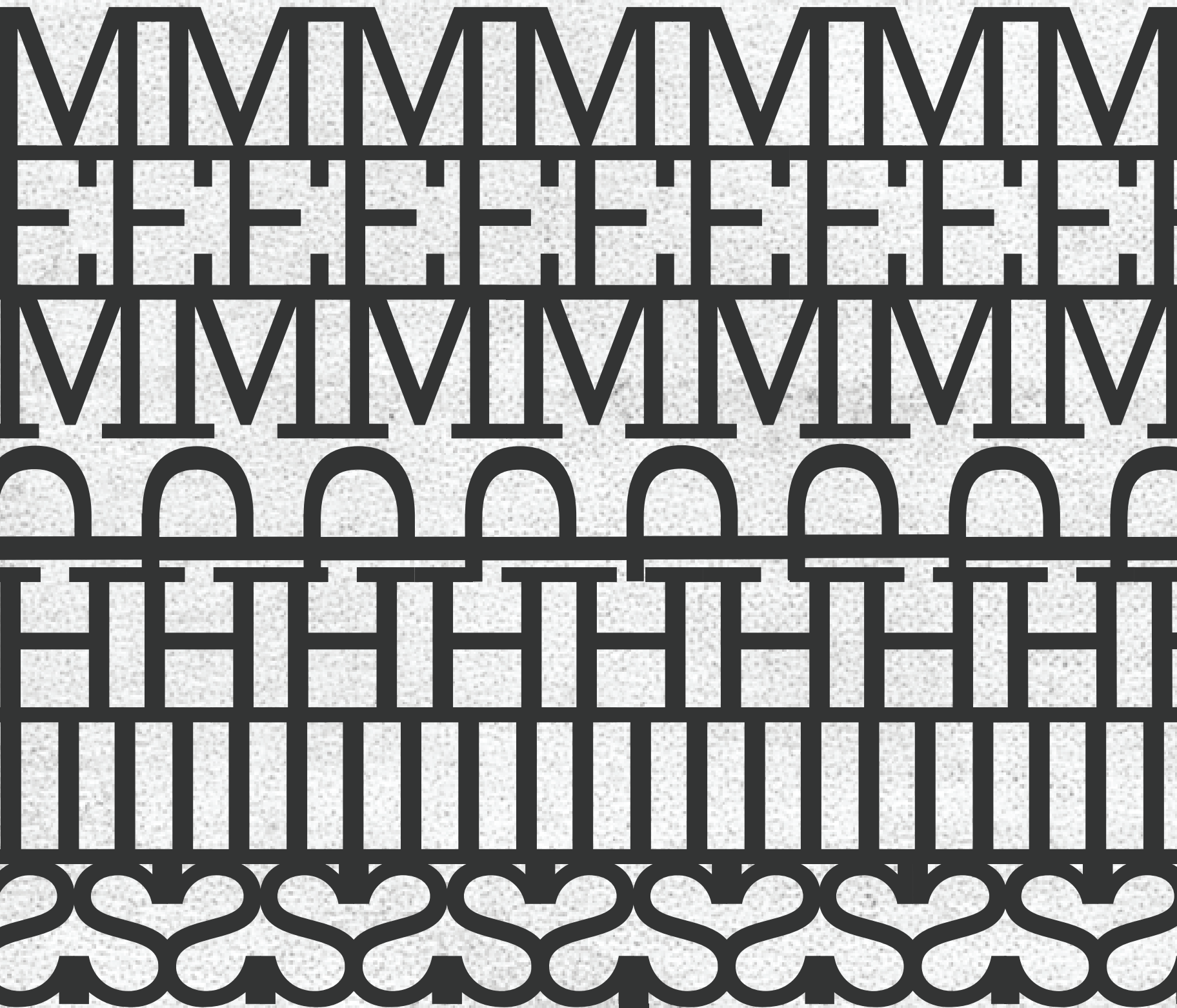
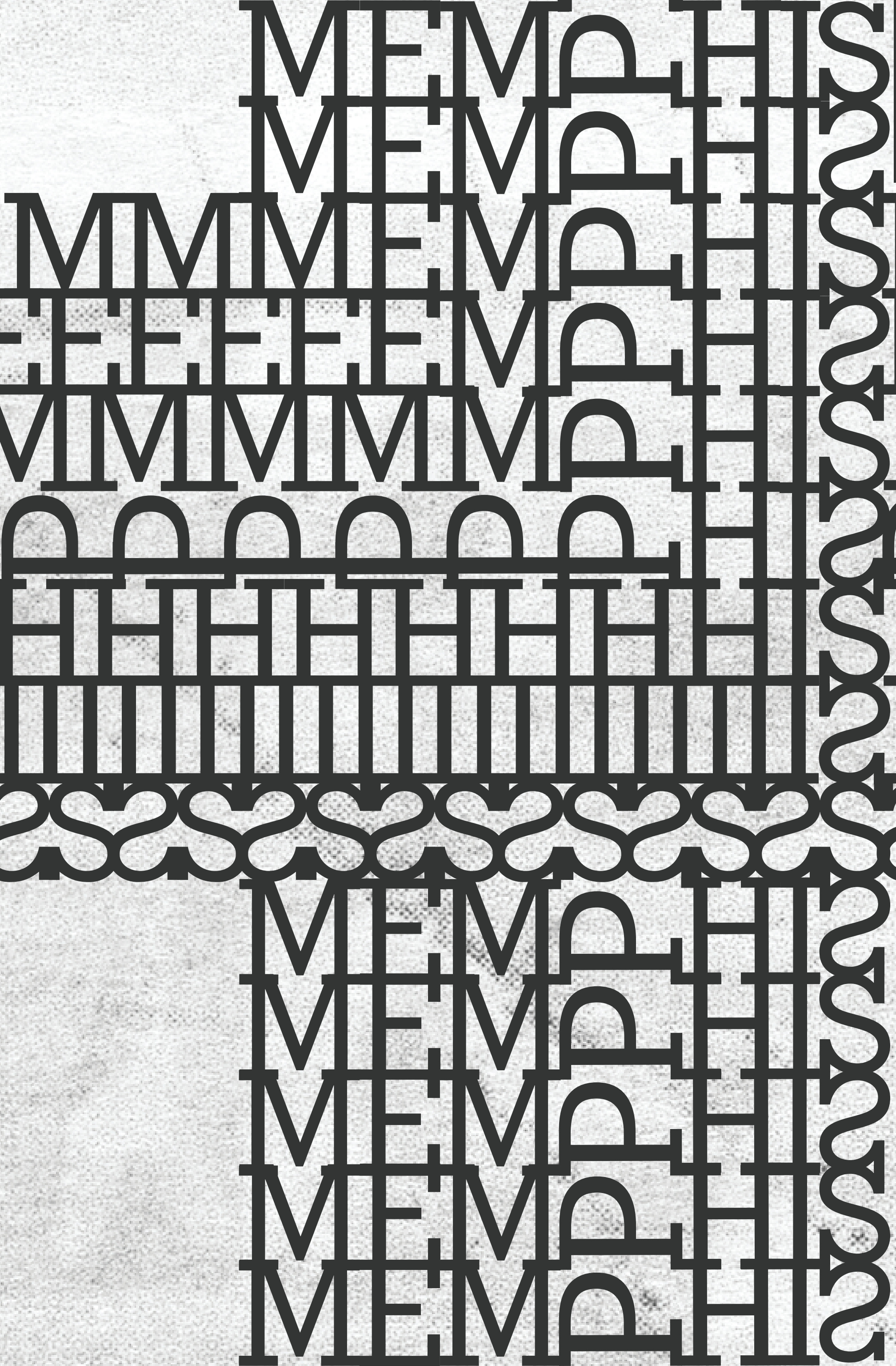


MEMPHIS!



Rudolph Wolf created Memphis in 1929. It was the first revival of Egyptian typefaces as all others were created in the early 1800s. It is a very geometric font that is weighted the same in its strokes and serifs. Unlike its predecessors in the Egyptian style Memphis is almost completely mono-linear. It showed up around the time of the great depression and reintroduced slab serif typefaces with new more simple and modern letterforms. Memphis is typically used for headlines, advertising, or short blocks of text.

Aa Bb Cc Dd Ee Ff
Gg Hh Ii Jj Kk Ll Mm
Nn Oo Pp Qq Rr Ss Tt
Uu Vv Ww Xx Yy Zz
1 2 3 4 5 6 7 8 9 0
, . ? ! @ # \$ % ^ & * ()

Egyptian
Slab Serif

Designer:
Rudolph Wolf

Created in 1929