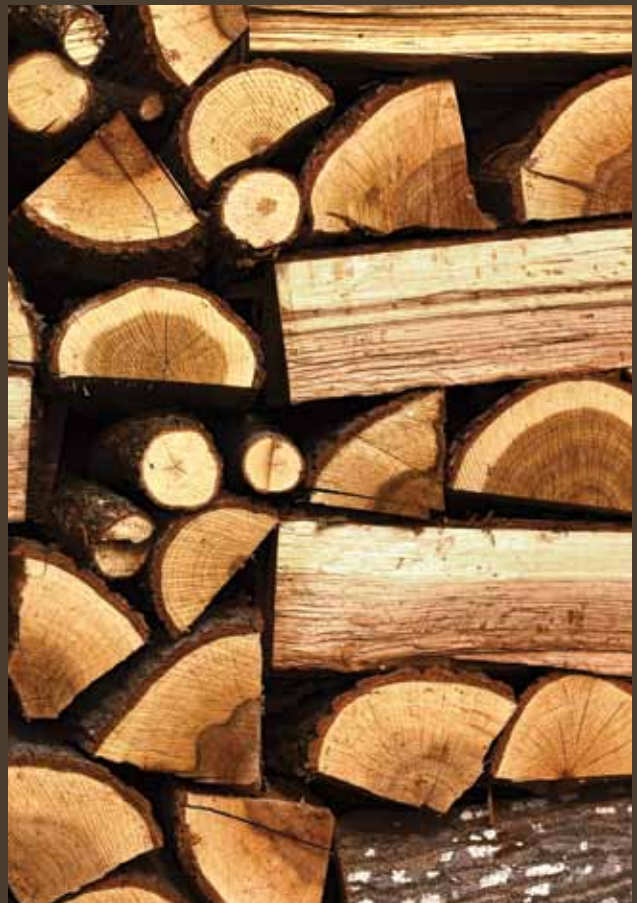


BLAZE KING

Sirocco 20 / Chinook 20
Free Standing
Wood Stoves



BLAZE  **KING**

www.blazeking.com

SIROCCO 20

Classic Lines and Versatility

The Sirocco embodies the timeless styling of the classic North American wood stove.

Versatility You can customize your Sirocco stove to match the decor of your home.

Choose the classic black cast iron door and pedestal with ash pan. Or add brushed nickel highlights to the door, door handle and by-pass handle.

For a different look, the Sirocco also comes as a leg model with optional ash pan.

Finish your styling preferences with the optional convection deck. This not only adds to the look of your stove but also helps increase its performance.



Sirocco 20 on pedestal with ash drawer and with optional convection deck



Sirocco 20 shown with legs. Optional ash drawer, convection deck, cast iron door with satin trim, satin door handle and satin bypass handle.

Specifications	Sirocco 20
Heat output on high*	38,000 BTU's/hour for 8 hours
Square Feet Heated*	900 - 1500
Efficiency**	86.40%
Maximum Log Size	18" (recommended minimum of 16")
Burn Time*	Up to 20 hours on low
Emissions (grams/hour)	1.3 g
Firebox Size	1.8 cu. ft.
Flue Size	6"

* Length of burn time, sq. ft. heated and BTUs depend on type of wood, moisture content, house insulation and climate conditions.
 ** Efficiency based on Low Heat Value.





CHINOOK 20

Modern Elegance The clean elegant design of the Chinook will allow it to blend into newly decorated homes. There is a strong European influence in its design from the integrated legs to the large rectangular glass viewing area.

The convection deck is standard on the Chinook. Add the optional dual fan system to further move the super-heated air into your room.



Specifications	Chinook 20
Heat output on high*	38,000 BTU's/hour for 8 hours
Square Feet Heated*	900 - 1500
Efficiency**	86.40%
Maximum Log Size	18" (recommended minimum of 16")
Burn Time*	Up to 20 hours on low
Emissions (grams/hour)	1.3 g
Firebox Size	1.8 cu. ft.
Flue Size	6"

* Length of burn time, sq. ft. heated and BTUs depend on type of wood, moisture content, house insulation and climate conditions.
 ** Efficiency based on Low Heat Value.

Sirocco 20 and Chinook 20 Specifications

Sirocco 20 and Chinook 20

Min. Clearances for Sirocco 20 and Chinook 20

Residential Installation	A	B	C	D	E	F	J
Roof Exit, Parallel & Corner	10¾"	6"	19¾"	*12 ⁵ / ₈ "	4"	*12 ⁷ / ₈ "	72"
Wall Exit, Parallel & Corner	10¾"	6"	19¾"	*12 ⁵ / ₈ "	4"	*12 ⁷ / ₈ "	*72"
Alcove, Roof or Wall Exit (Must use Fan Kit or Rear Shield & Double Wall Pipe)	10¾"	6"	19¾"	*12 ⁵ / ₈ "	N/A	N/A	72"

Mobile Home Installation

Roof Exit, Parallel & Corner (Must use Fan Kit or Rear Shield & Double Wall Pipe and Fresh Air Intake Kit)	10¾"	6"	19¾"	*12 ⁵ / ₈ "	4"	*12 ⁷ / ₈ "	72"
---	------	----	------	-----------------------------------	----	-----------------------------------	-----

Alcove Minimum Requirements

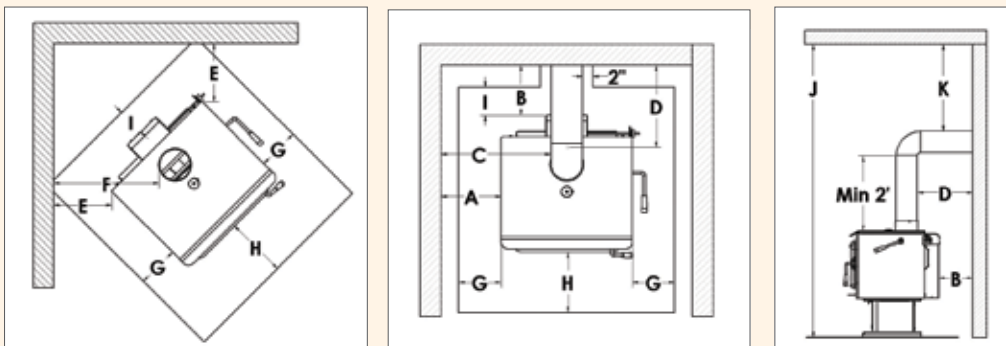
Width 48"	Maximum Depth 48"	Minimum Height 72"
-----------	-------------------	--------------------

* Check Local Codes/Pipe Manufacturer Requirements for Clearances. In all of Canada and most of USA, 18" Clearances from single Wall Pipe are Required.

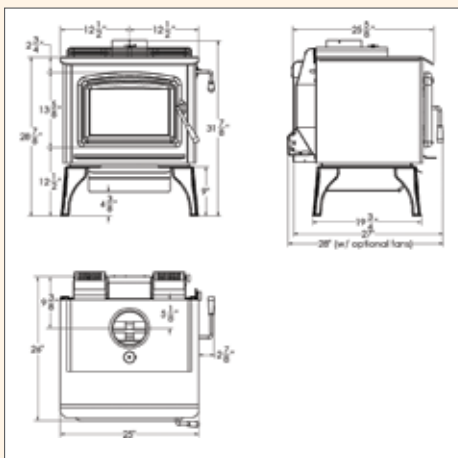
Hearth Protection

	Ember Protection	G	H	I	K
USA	43½" x 34¾"	2¾"	16"	0"	18" (Single Wall Pipe)
Canada	53¼" x 45¼"	8"	18"	8"	18" (If K=18" Then J=84")

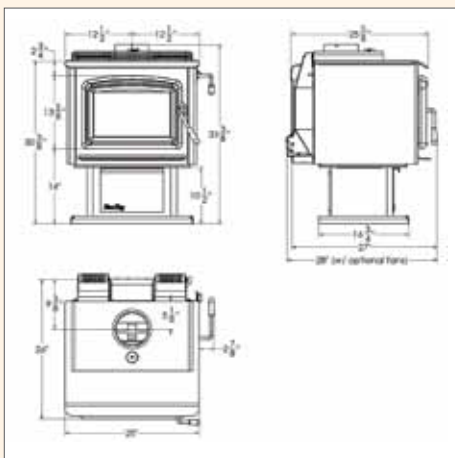
Clearance Diagrams



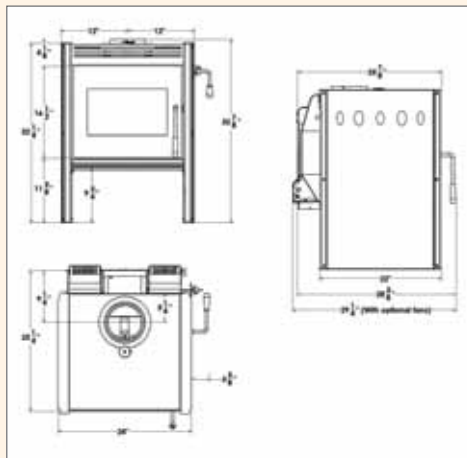
Sirocco 20 Leg



Sirocco 20 Pedestal



Chinook 20



The Benefits of Owning a Blaze King

Radiant Heat Radiant heat is like sunshine. Most surfaces of your Blaze King stove radiate heat so you feel the inner warmth you expect from a real fire.

Convection Heat The optional dual fan system moves room air over the hot surface of your stove. The fans spread this super-heated air evenly around your home.

Bio Energy By using renewable wood fuel in your clean-burning Blaze King you are reducing the amount of fossil-fuel emissions from other energy sources, lessening your impact on the environment. Wood is an infinitely renewable and clean energy resource. Because our stoves are amongst the cleanest and most efficient available, they merely release the CO² that plants absorbed over their life span.

Design Features The unique design of a Blaze King makes it possible for it to be placed close to a corner of a wall. This makes it ideal for a medium-sized room or for installation in tight alcoves.

The Sirocco and Chinook have a layer of bricks at the bottom of the firebox. As a result, all that is needed for floor protection is a spark protector. This could save you hundreds of dollars on your installation costs.

Door Design Every Blaze King has a steel frame around the door opening. Not only does this add strength to the firebox, but it creates a tight seal as it is pressed into the door gasket.

Our engineers built the door latch so it is adjustable. You can alter the tension on the gasket thus reducing the need for expensive replacements. The latch is also more durable because it is placed on the outside of the firebox.

Sirocco 20 and Chinook 20 Specifications

Sq. ft. heating capacity	900 to 1500 sq ft
Wood length (front to back)	18" (recommended 16")
Wood capacity (soft wood)	26 lb
Wood capacity (hard wood)	40 lb
Flue size	6"
Door opening	15.625" x 8"
Firebox depth (front to back)	16" (brick to brick), 18.5" (brick to glass)
Firebox width	17.5"
Firebox height	10.75"
Firebox capacity	1.8 cu ft
Emissions	1.3 grams/hour
Heat output on high*	38,000 BTU's/hour for 8 hours
Real world heat output (cord wood)	49,500 BTUs
Heat output (EPA test fuel)	22,700 BTU/hour average
Low burn time	Up to 20 hours
High burn time	Up to 8 hours

Sirocco 20 Specs

Approximate weight (firebox w/ pedestal)	420 lbs
Approximate weight (firebox w/ legs)	350 lbs

Chinook 20 Specs

Approximate weight	320 lbs
--------------------	---------



BLAZE KING

Sirocco 20 and Chinook 20 Features



Catalytic Technology Blaze King has been manufacturing wood stoves for over 35 years and was the first manufacturer to certify a clean-burning catalytic wood stove in November of 1984. We have continued to refine our catalytic combustion design and the Sirocco 20 and Chinook 20 embody nearly three decades of continuing refinement. We chose catalytic technology because it delivers the cleanest, most efficient and longest-burning stoves available today.



Thermostat control (No electricity required) Blaze King's built-in thermostat constantly monitors the heat output of your stove. It automatically adjusts the air required for combustion and maintains a constant comfortable room temperature all day or all night long.



Sleep Comfort Technology and Long Burn Times The unique technology, where we combine the efficiencies of a catalytic combustor with a built-in thermostat, provides the longest burn times of any wood stove. The Sirocco 20 and Chinook 20 can achieve over 20 hours burn time on low from a single load of wood. This means that you get a full night's sleep without having to reload your stove. It also means that when you return from work, your stove is still hot and your home is warm.



Easy to operate All Blaze King stoves are simple and easy to operate. Light a fire as per the instructions in the owners manual. After you have established a good fire and the thermometer needle is well into the active zone simply select your heat setting, from low (#1) to high (#3½) and relax. Your Blaze King will now automatically control the heat from your stove until you need to load it again. Which could be up to 20 hours later.

Options

Sirocco 20 Options.

- Pedestal with Ash Pan
- Cast Iron Legs
- Ash Pan for Leg Model
- Cast Iron Painted Door
- Cast Iron Painted Door with Satin Nickel Trim
- Satin Nickel Door Handle

- Satin Nickel Bypass Handle
- Convection deck
- Dual Fan System

Chinook 20 Options.

- Dual Fan System

Performance Features

- 1.8 cu. ft. large-capacity firebox
- 20 hours on low burn
- Heats from 900 to 1,500 square feet
- 18" maximum log length, minimum of 16" recommended
- Thermostatically controlled
- Strong air wash helps to keep the glass clean
- The highest efficiencies available in any wood stove at 86.4% LHV and 75.9% HHV*
- EPA tested to 1.3 grams per hour. This is one of the cleanest wood stoves available in the world
- A Blaze King catalytic stove will deliver an even heat for up to 20 hours depending on your heat setting. The heat a regular non-catalytic wood stove is the same, at the beginning of a new fire, but then the heat fizzles out to a very low level after a few hours of burning.
- Less Work. Chop, stack and store up to a third less wood
- A cost-effective way to heat your home and give you comfort in knowing you are doing your part for the environment.

*LHV = Low Heat Value, HHV = High Heat Value.

Visit www.blazeking.com for more details on how Blaze King stoves are the most efficient available.



www.blazeking.com

