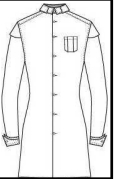


Shirt 003

Senior project	Style	Shirt 003	Style Description	Shirt French Cuff
None				
None				Folder Status By
None	Fabric Content 1	Cotton	Date Folder Created	30 AUG 2010 12:34 PM
Fall 2010	Fabric Content 2		Date Folder Modified	22 SEP 2010 02:47 PM



<p><b>1</b></p> <p><b>COLLAR</b> 1. FUSE INTERLINING TO TOP COLLAR 2. TURN OVER SEAM AND STITCH 6mm FROM FOLDED EDGE.</p>	<p><b>Shirt Construction - Fusing - Fuse collar</b> Fuse interlining to top collar and front collar tab.</p>	<p>Seam Type:</p> <p>Stitch Class:</p> <p>SPI:</p> <p>Seam Allowance:</p> <p>CD User Defined 5:</p>
<p><b>2</b></p>	<p><b>Shirt Construction - Seam Construction - collar tab</b> Stitch along front and top of collar tab. Turn, press, top stitch along seam.</p>	<p>Seam Type: SSae</p> <p>Stitch Class: 301</p> <p>SPI: 8</p> <p>Seam Allowance: 1/4"</p> <p>CD User Defined 5:</p>
<p><b>3</b></p> <p>3. PLACE TOP COLLAR ON UNDER COLLAR. SEAM 6 mm FROM THE EDGE. TRIM CORNERS.</p>	<p><b>Shirt Construction - Seam Construction - Attach top and under collar</b> Single needle stitch top collar to under collar. Turn and press. Catch collar tab in collar front seam. Top stitch collar edge</p>	<p>Seam Type: SSae</p> <p>Stitch Class: 301</p> <p>SPI: 8</p> <p>Seam Allowance:</p> <p>CD User Defined 5:</p>
<p><b>4</b></p>	<p><b>Shirt Construction - Seam Construction - Attach collar to collar stand</b> Single needle stitch collar to collar stand</p>	<p>Seam Type: SSa</p> <p>Stitch Class: 301</p> <p>SPI: 8</p> <p>Seam Allowance: 1/4"</p> <p>CD User Defined 5:</p>

Shirt 003

Senior project	Style	Shirt 003	Style Description	Shirt French Cuff
None			Folder Status By	
None	Fabric Content 1	Cotton	Date Folder Created	30 AUG 2010 12:34 PM
None	Fabric Content 2		Date Folder Modified	22 SEP 2010 02:47 PM

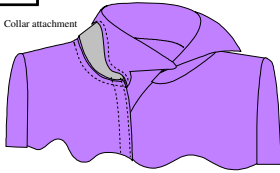
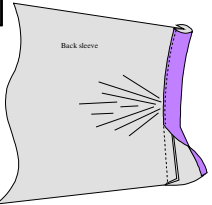


<p><b>5</b></p>	<p><b>Shirt Construction - Seam Construction - Pocket pocket</b>                  fold front pocket pleats. stitch 2 inches down pleat. fold pocket extension to wrong side and top stitch 1" from top. Attach pocket to front left</p>	<p>Seam Type: LSd                  Stitch Class: 301                  SPI: 8                  Seam Allowance: 1/2"                  CD User Defined 5:</p>
<p><b>6</b></p>	<p><b>Shirt Construction - Labeling - Size Label</b>                  Single stitch size label to center of care label. Machine tack at ends.</p>	<p>Seam Type: OSa                  Stitch Class: 301                  SPI: 8                  Seam Allowance:                  CD User Defined 5:</p>
<p><b>7</b></p>	<p><b>Shirt Construction - Labeling - Content/Care Label</b>                  Add Content/Care Label 2" below collar hem on inside back yoke.</p>	<p>Seam Type: OSa                  Stitch Class: 301                  SPI: 8                  Seam Allowance:                  CD User Defined 5:</p>
<p><b>8</b></p>	<p><b>Shirt Construction - Seam Construction - back yoke</b>                  In one stitch attach inside and outer yoke pieces to back. Press then top stitch through all layers</p>	<p>Seam Type: LSf                  Stitch Class: 301                  SPI: 8                  Seam Allowance: 1/2"                  CD User Defined 5:</p>

Shirt 003

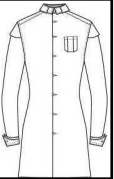
Senior project	Style	Shirt 003	Style Description	Shirt French Cuff
None			Folder Status By	
None	Fabric Content 1	Cotton	Date Folder Created	30 AUG 2010 12:34 PM
None	Fabric Content 2		Date Folder Modified	22 SEP 2010 02:47 PM

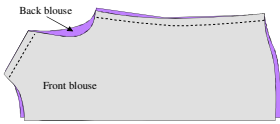


<p><b>9</b></p>	<p><b>Shirt Construction - Seam Construction - attach yoke to front</b> Attach both yoke pieces to front shoulder</p>	<p>Seam Type: LSf Stitch Class: 301 SPI: 8 Seam Allowance: 1/2" CD User Defined 5:</p>
<p><b>10</b></p>  <p>Collar attachment</p>	<p><b>Shirt Construction - Seam Construction - Attach collar to body</b> Single needle stitch top collar to collar stand. Turn under collar and stitch to shell.</p>	<p>Seam Type: LSf Stitch Class: 301 SPI: 8 Seam Allowance: 1/4" CD User Defined 5:</p>
<p><b>11</b></p>  <p>Back sleeve</p>	<p><b>Shirt Construction - Seam Construction - Attach sleeve placket</b> Attach under placket to back side of slit. Attach upper placket to front side of slit. Top stitch around upper placket then cross back to catch slit opening</p>	<p>Seam Type: BSc Stitch Class: 301 SPI: 8 Seam Allowance: 1/4" CD User Defined 5:</p>
<p><b>12</b></p>	<p><b>Shirt Construction - Seam Construction - sleeve cap pleat</b> Fold and press sleeve cap pleat. Baste in seam allowance</p>	<p>Seam Type: SSa Stitch Class: 301 SPI: 6 Seam Allowance: 1/2" CD User Defined 5:</p>

Shirt 003

Senior project	Style	Shirt 003	Style Description	Shirt French Cuff
None			Folder Status By	
None	Fabric Content 1	Cotton	Date Folder Created	30 AUG 2010 12:34 PM
Fall 2010	Fabric Content 2		Date Folder Modified	22 SEP 2010 02:47 PM



<p><b>13</b></p>	<p><b>Shirt Construction - Seam Construction - Attach sleeve to shell</b>                  Stitch sleeve to armhole. Turn seam allowance towards shell and edge stitch</p>	<p>Seam Type: SSwb                  Stitch Class: 301                  SPI: 8                  Seam Allowance: 1/2"                  CD User Defined 5:</p>
<p><b>14</b></p> 	<p><b>Shirt Construction - Seam Construction - Close side and shoulder seam</b>                  Sew side seam and sleeve seam in one continuous run. Seam stops at hip level on shell. Stitch seam allowance to shell below stopping point.</p>	<p>Seam Type: LSc                  Stitch Class: 301                  SPI: 8                  Seam Allowance: 1/2"                  CD User Defined 5:</p>
<p><b>15</b></p>	<p><b>Shirt Construction - Seam Construction - Hem</b>                  Sew hem at 1/2" allowance</p>	<p>Seam Type: EFb                  Stitch Class: 301                  SPI: 8                  Seam Allowance: 1/2"                  CD User Defined 5:</p>
<p><b>16</b></p>	<p><b>Shirt Construction - Fusing - Fuse cuff</b>                  Fuse outer cuffs</p>	<p>Seam Type:                  Stitch Class:                  SPI:                  Seam Allowance:                  CD User Defined 5:</p>

Shirt 003

Senior project	Style	Shirt 003	Style Description	Shirt French Cuff
None			Folder Status By	
None	Fabric Content 1	Cotton	Date Folder Created	30 AUG 2010 12:34 PM
Fall 2010	Fabric Content 2		Date Folder Modified	22 SEP 2010 02:47 PM



<p>17</p>	<p><b>Shirt Construction - Seam Construction - Cuffs</b> Attach inside and outer cuffs. Turn and press. Top stitch second cuff.</p>	<p>Seam Type: SSae Stitch Class: 301 SPI: 8 Seam Allowance: 1/2" CD User Defined 5:</p>
<p>18</p>	<p><b>Shirt Construction - Seam Construction - cuff to sleeve</b> Stitch second cuff to sleeve. Stitch inside of first cuff to sleeve. Fold under seam allowance of outer cuff. Turn to outside of sleeve and top stitch perimeter of first cuff. Top stitch again 1/4" up from bottom edge stitch</p>	<p>Seam Type: SSae Stitch Class: 301 SPI: 8 Seam Allowance: 1/2" CD User Defined 5:</p>
<p>19</p>	<p><b>Shirt Construction - Seam Construction - button holes</b> sew button holes. One in collar stand and one 3" from collar stand. One button hole every 3 1/2" afterwards</p>	<p>Seam Type: OSa Stitch Class: 304 SPI: 180 Seam Allowance: CD User Defined 5:</p>
<p>20</p>	<p><b>Shirt Construction - Seam Construction - buttons</b> attach buttons to match button holes</p>	<p>Seam Type: OSa Stitch Class: 101 SPI: Seam Allowance: CD User Defined 5:</p>

Shirt 003

Senior project	Style	Shirt 003	Style Description	Shirt French Cuff
None			Folder Status By	
None	Fabric Content 1	Cotton	Date Folder Created	30 AUG 2010 12:34 PM
None	Fabric Content 2		Date Folder Modified	22 SEP 2010 02:47 PM
Fall 2010				



<p><b>21</b></p> <p><b>Linked</b></p>	<p><b>Shirt Construction - Labeling - Hang Tag - Booklet</b></p> <p>Insert tag gun needle 7" above left arm cuff to the inside seam. Attach booklet hangtag.</p>	<p>Seam Type:</p> <p>Stitch Class:</p> <p>SPI:</p> <p>Seam Allowance:</p> <p>CD User Defined 5:</p>
<p><b>22</b></p> <p><b>Linked</b></p>	<p><b>Shirt Construction - Packaging - Box</b></p> <p>Place Jackets in the Box that is appropriately Labeled.</p>	<p>Seam Type:</p> <p>Stitch Class:</p> <p>SPI:</p> <p>Seam Allowance:</p> <p>CD User Defined 5:</p>
<p><b>23</b></p> <p><b>Linked</b></p>	<p><b>Shirt Construction - Packaging - Close Box</b></p> <p>Fold Longer Flaps Inward First. Corners of Smaller Flaps Should Be Inserted Into Provided Slots of Longer Flaps as Shown. To Complete Box Closure. Barcode Label Set on Bottom Right Hand Corner as Indicated.</p>	<p>Seam Type:</p> <p>Stitch Class:</p> <p>SPI:</p> <p>Seam Allowance:</p> <p>CD User Defined 5:</p>
<p></p>	<p></p>	<p></p>