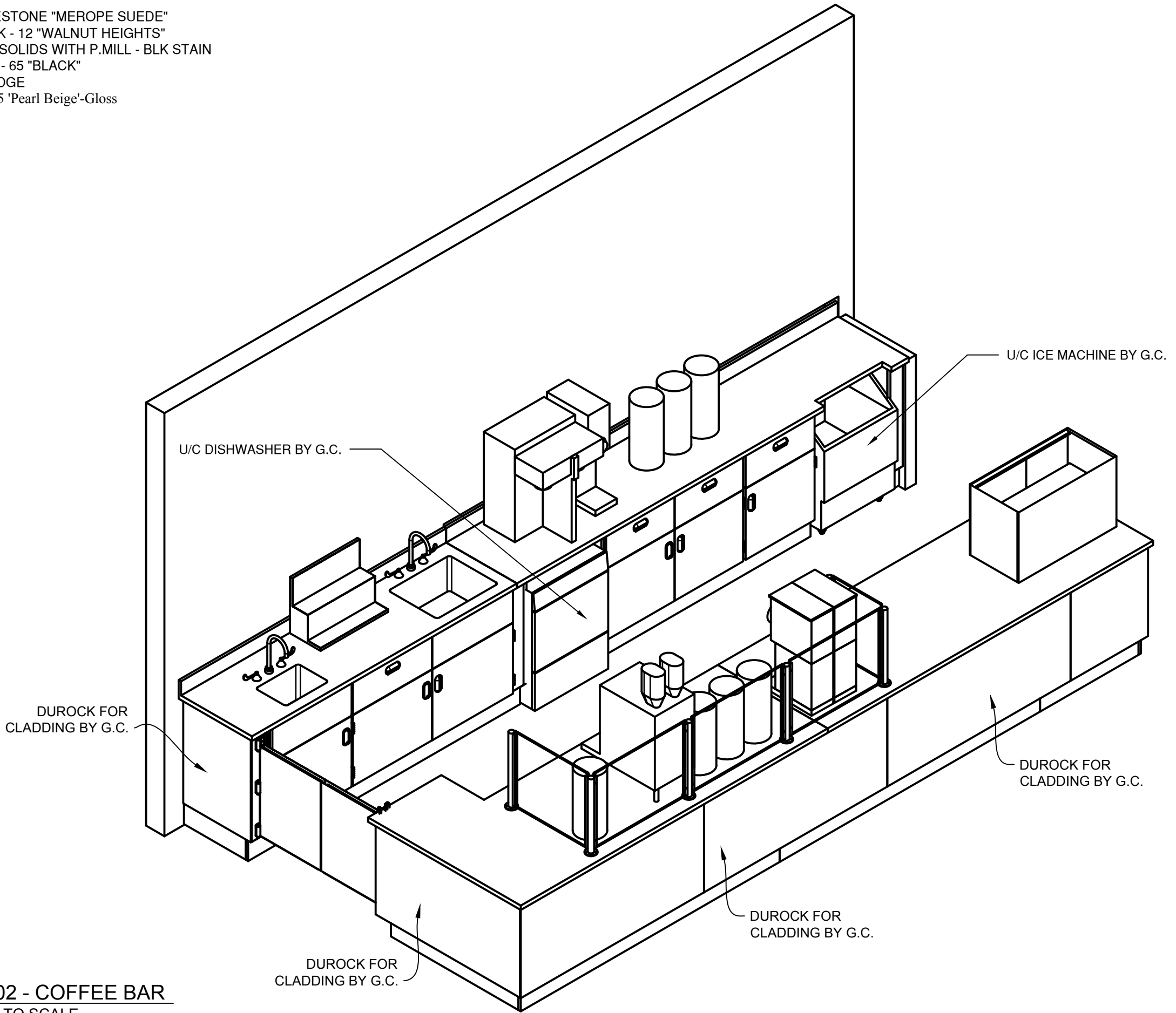


SS1 = 3 CM SILESTONE "MEROPE SUEDE"  
 PL1 = WA #7965K - 12 "WALNUT HEIGHTS"  
 WD4 = ASH VC/ SOLIDS WITH P.MILL - BLK STAIN  
 PL3 = WA #3195 - 65 "BLACK"  
 ST/STEEL - 1" EDGE  
 ST3 = RAL #1035 'Pearl Beige'-Gloss



1 M902 - COFFEE BAR  
 1 NOT TO SCALE

THIS PRINT PROPERTY OF

**CAPITAL WOOD PRODUCTS**  
 735 OLIVE STREET  
 SAINT PAUL, MN 55101  
 PHONE (651) 225-5613  
 FAX (651) 225-9286

M-MATERIAL

TOP = 3 CM SILESTONE "NEBULA"  
 BODY = WA #7965K - 12 "WALNUT HEIGHTS"  
 BASE = WA #3195 - 65 "BLACK"

H-HARDWARE

- H1 =
- H2 =
- H3 =
- H4 =
- H5 =
- H6 =
- H7 =
- H8 =
- H9 =

F-FINISHES

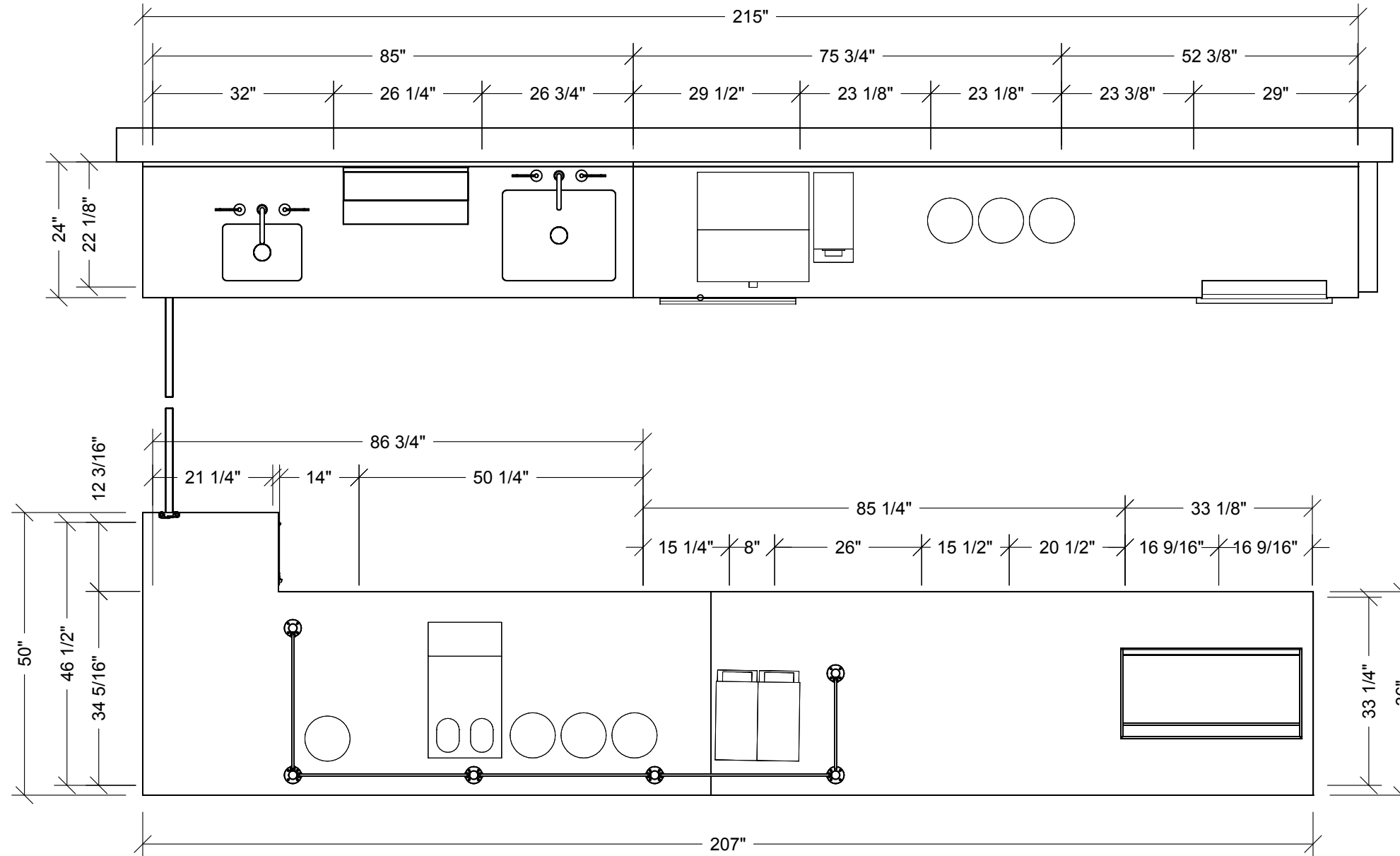
SS1 = 3 CM SILESTONE "MEROPE SUEDE"  
 PL1 = WA #7965K - 12 "WALNUT HEIGHTS"  
 WD4 = ASH VC/ SOLIDS WITH P.MILL - BLK STAIN  
 PL3 = WA #3195 - 65 "BLACK"  
 ST/STEEL - 1" EDGE  
 ST3 = RAL #1035 'Pearl Beige'-Gloss

JOB NO	WFM - WHN
JOB NAME	WHOLE FOODS MARKET
JOB LOCATION	WHEATON, MN
DRAWING DESCRIPTION	M902 - COFFEE BAR

REVISIONS		
REVISION NO.	DATE	INITIALS
1		
2		

CAD NO.	SCALE:
	NOTED
DRAWN BY	DATE
FBK	9/14/16

**SS1 = 3 CM SILESTONE "MEROPE SUEDE"**  
**PL1 = WA #7965K - 12 "WALNUT HEIGHTS"**  
**WD4 = ASH VC/ SOLIDS WITH P.MILL - BLK STAIN**  
**PL3 = WA #3195 - 65 "BLACK"**  
**ST/STEEL - 1" EDGE**  
**ST3 = RAL #1035 'Pearl Beige'-Gloss**



**1 PLAN VIEW @ M902 - COFFEE BAR**  
**2 SCALE: 1/2" = 1'-0"**

THIS PRINT PROPERTY OF



735 OLIVE STREET  
 SAINT PAUL, MN 55101  
 PHONE (651) 225-5613  
 FAX (651) 225-9286

M-MATERIAL

**TOP = 3 CM SILESTONE "NEBULA"**  
**BODY = WA #7965K - 12 "WALNUT HEIGHTS"**  
**BASE = WA #3195 - 65 "BLACK"**

H-HARDWARE

- H1 =
- H2 =
- H3 =
- H4 =
- H5 =
- H6 =
- H7 =
- H8 =
- H9 =

F-FINISHES

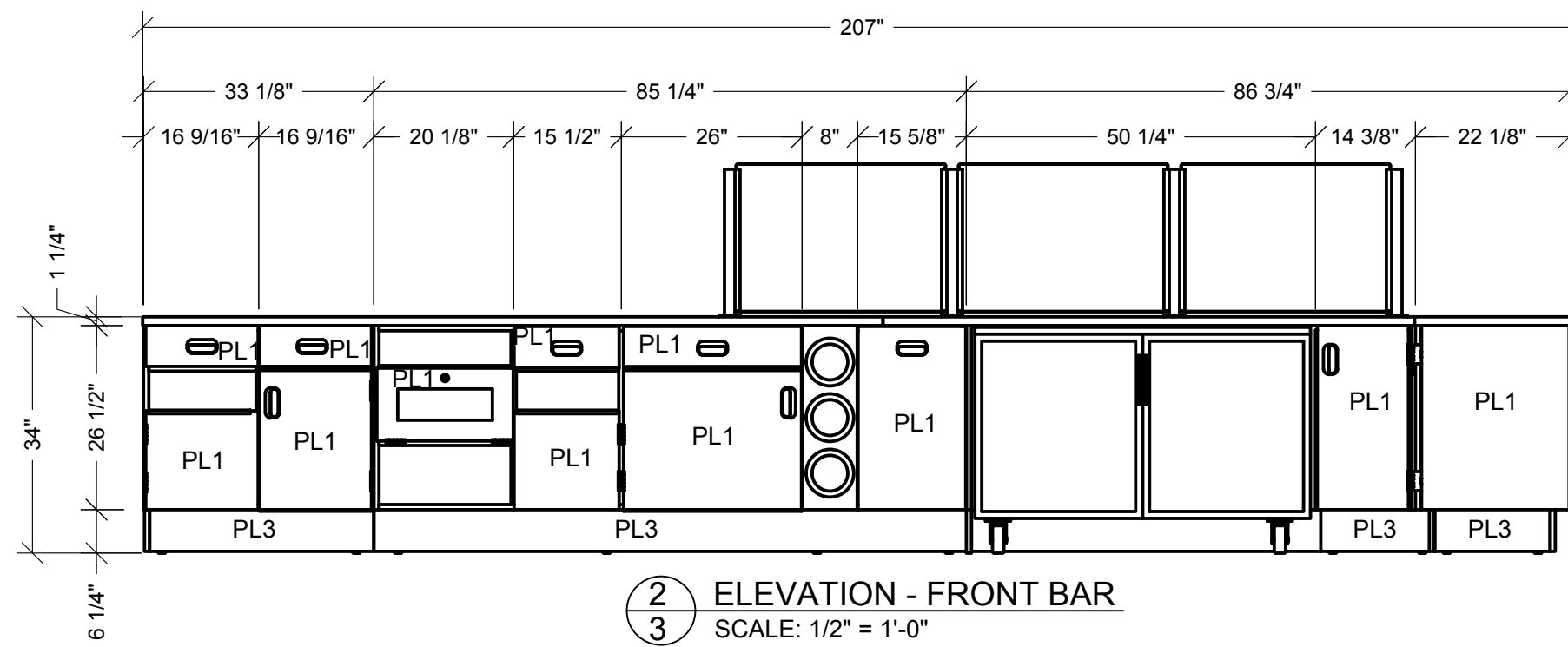
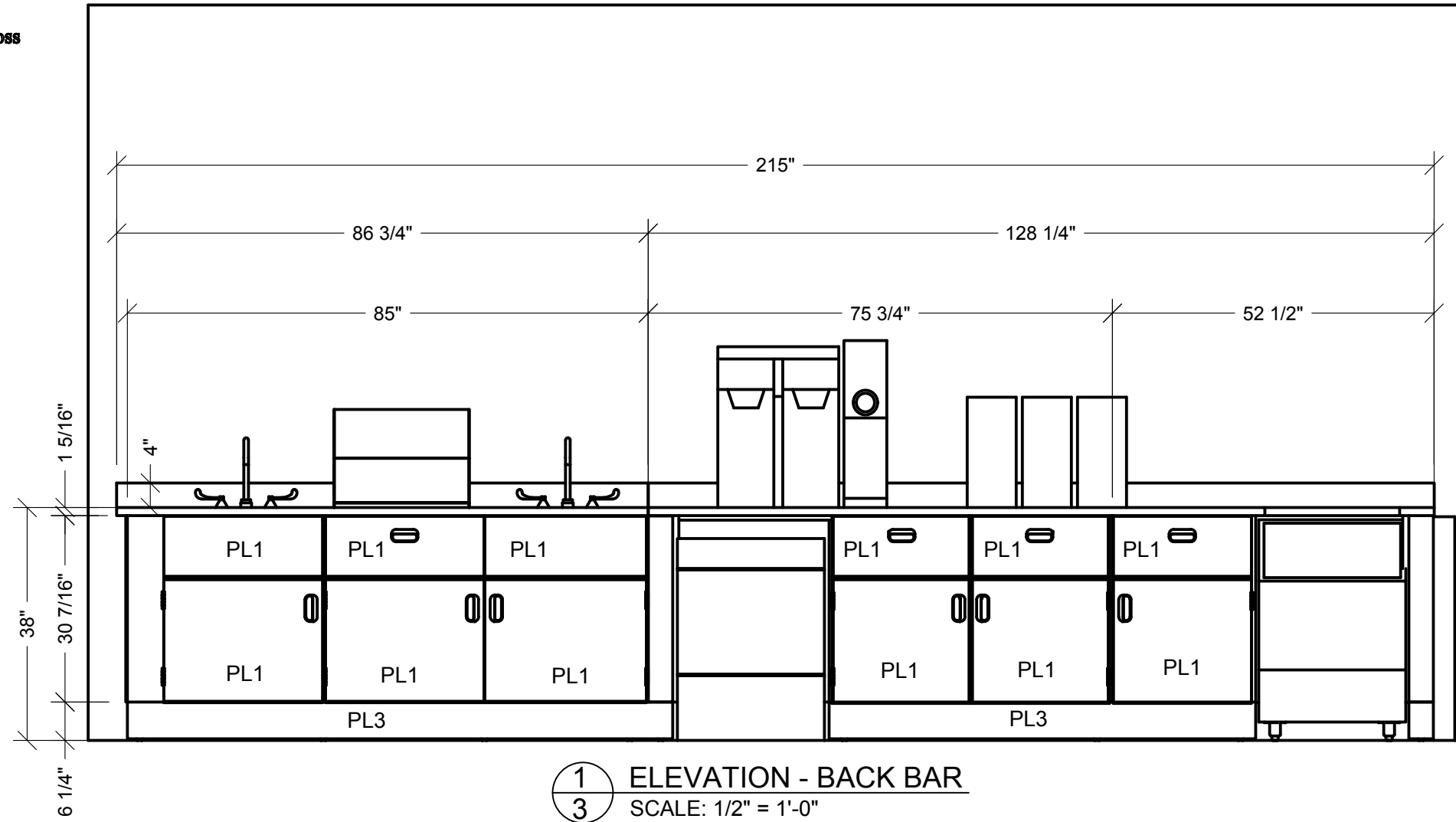
**SS1 = 3 CM SILESTONE "MEROPE SUEDE"**  
**PL1 = WA #7965K - 12 "WALNUT HEIGHTS"**  
**WD4 = ASH VC/ SOLIDS WITH P.MILL - BLK STAIN**  
**PL3 = WA #3195 - 65 "BLACK"**  
**ST/STEEL - 1" EDGE**  
**ST3 = RAL #1035 'Pearl Beige'-Gloss**

JOB NO  
 WFM - WHN  
 JOB NAME  
 WHOLE FOODS MARKET  
 JOB LOCATION  
 WHEATON, MN  
 DRAWING DESCRIPTION  
 M902 - COFFEE BAR

REVISIONS		
REVISION NO.	DATE	INITIALS
1		
2		

CAD NO.		SCALE:
DRAWN BY	DATE	NOTED
EBK	9/14/16	2 OF 3

**SS1 = 3 CM SILESTONE "MEROPE SUEDE"**  
**PL1 = WA #7965K - 12 "WALNUT HEIGHTS"**  
**WD4 = ASH VC/ SOLIDS WITH P.MILL - BLK STAIN**  
**PL3 = WA #3195 - 65 "BLACK"**  
**ST/STEEL - 1" EDGE**  
**ST3 = RAL #1035 'Pearl Beige'-Gloss**



THIS PRINT PROPERTY OF



735 OLIVE STREET  
 SAINT PAUL, MN 55101  
 PHONE (651) 225-5613  
 FAX (651) 225-9286

M-MATERIAL

**TOP = 3 CM SILESTONE "NEBULA"**  
**BODY = WA #7965K - 12 "WALNUT HEIGHTS"**  
**BASE = WA #3195 - 65 "BLACK"**

H-HARDWARE

- H1 =
- H2 =
- H3 =
- H4 =
- H5 =
- H6 =
- H7 =
- H8 =
- H9 =

F-FINISHES

**SS1 = 3 CM SILESTONE "MEROPE SUEDE"**  
**PL1 = WA #7965K - 12 "WALNUT HEIGHTS"**  
**WD4 = ASH VC/ SOLIDS WITH P.MILL - BLK STAIN**  
**PL3 = WA #3195 - 65 "BLACK"**  
**ST/STEEL - 1" EDGE**  
**ST3 = RAL #1035 'Pearl Beige'-Gloss**

JOB NO  
 WFM - WHN  
 JOB NAME  
 WHOLE FOODS MARKET  
 JOB LOCATION  
 WHEATON, MN  
 DRAWING DESCRIPTION  
 M802 - COFFEE BAR

REVISIONS		
REVISION NO.	DATE	INITIALS

CAD NO.	SCALE:
	NOTED
DRAWN BY	DATE
EBK	9/14/16
	3 OF 3