

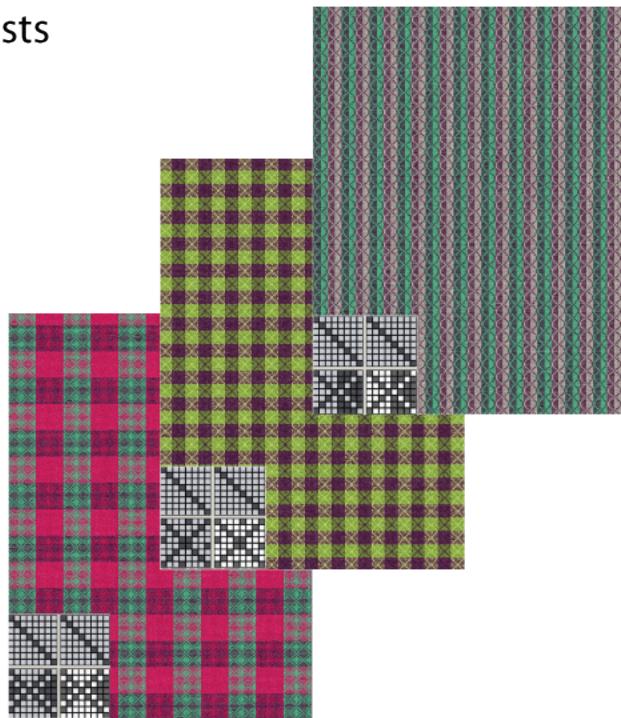
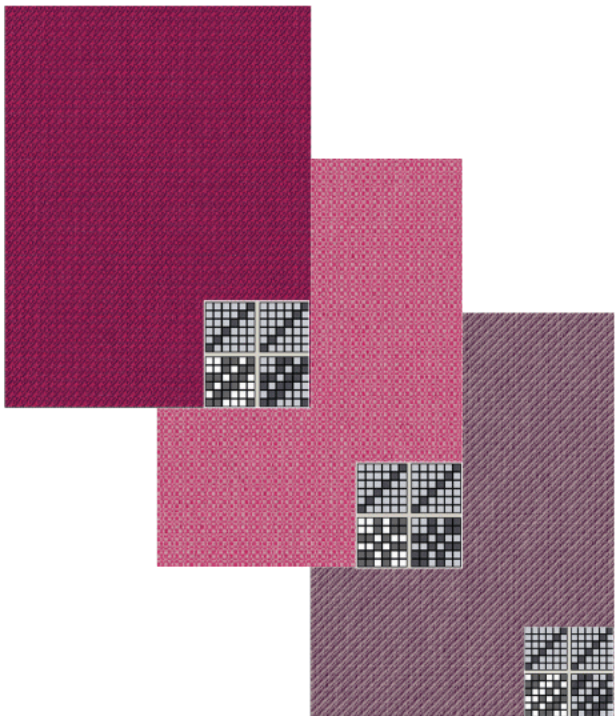
Women's Sweater Vests

Fabric Designs

Fall 2010

Women's Sweater Vests Fabric Designs

This line of woven fabrics was designed for women's sweater vests for fall 2010. The simple weaves on the left that were made on a Standard Cam Mober Machine, fit into the current trend of the long draped vest, whereas the more complex weaves on the right that were made on a Electronic Dobby Head Machine would be more for the vest trend. To add more interest to the vest without changing the silhouette, the fabric could vary, having unique weave patterns like a herringbone, you'll add more interest to a vest. For the color palette, I used the top ten Fall 2010 colors for women according to Fashioncolorcenter.com. The colors and weave patterns used for this project are perfect for a line of women's knitted vests. The majority of these vests are knitted and usually one color, but as they get more popular they will vary in color. In addition, more colors make it appealing to consumers, because then they would have more options for layering efforts, like colored shirts that they could wear



Endive
PANTONE 13-0632

Golden Glow
PANTONE 15-1050

Living Coral
PANTONE 16-1546

Lipstick Red
PANTONE 19-1764

TOP 10 FALL 2010
COLORS FOR WOMEN

Purple Orchid
PANTONE 18-3027

Chocolate Truffle
PANTONE 19-1526

Rose Dust
PANTONE 14-1307

Lagoon
PANTONE 16-5418

Woodbine
PANTONE 18-0538

Oyster Gray
PANTONE 14-1107