



Anthropologie Collection
Philadelphia, PA 19115
(215)564-2313

Assembly Specifications

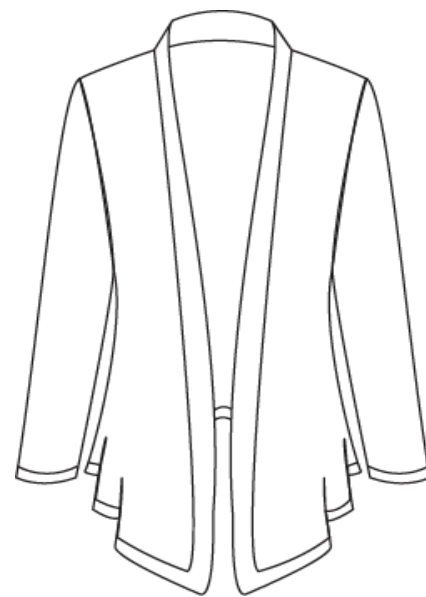
Size Category: Miss Description: Draped Cardigan Season: Fall
 Sample Size: 8 Fabric Category: Cotton/Jersey Estimate Post Cost: \$26
 Size Range: 4-12 Colors: Black, Pearl, Ocean Teal
 Created Date: 9/13/2009

Assembly overview:

Component assembly - bands to sleeves

Final assembly and finishing - Seams and finishing band
Finish pressing.

Machine stitching - 10-12 SPI
Seam allowance - 1/2 inch throughout

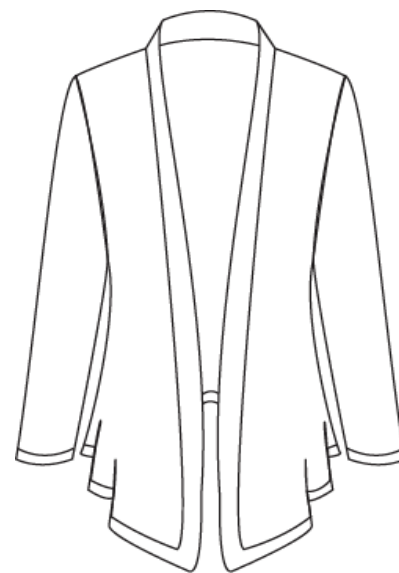


Task	Stitch and Seam	Notes
Bands to sleeves	301 BSc	
sleeve seams	301 SSae-2	R & L
shoulder seams	302 SSae-2	
side seams	303 SSae-2	
sleeves to bodice	304 SSae-2	
band to bodice	301 BSc	

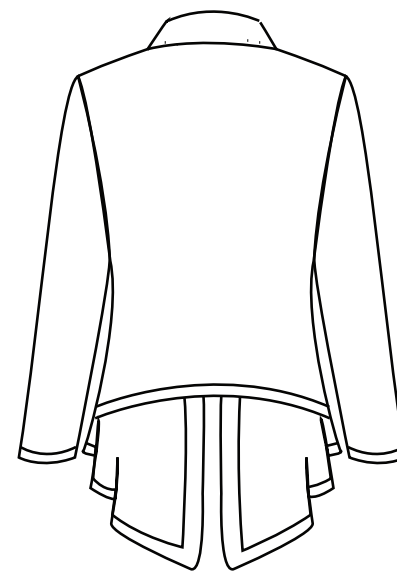
Anthropologie Collection
Philadelphia, PA 19115
(215)564-2313

Points of Measure Sheet

Size Category: Miss Description: Draped Cardigan Season: Fall
 Sample Size: 8 Fabric Category: Cotton/Jersey Estimate Post Cost: \$26
 Size Range: 4-12 Colors: Black, Pearl, Ocean Teal
 Created Date: 9/13/2009



Front



Back

Description	Size 8
Across shoulder	16
Bust. 1" below armseye	38 3/4
Sleeve length from shoulder	25 1/2
Armseye	22
Upperarm	14
Sleeve opening	10 1/4
CB base of neck to hem	24 3/4
CF bottom of neck to hem	29 3/4

Care label Information



MACHINE WASH COLD GENTLE CYCLE,
ONLY NON-CHLORINE BLEACH WHEN NEEDED
DRY ON DELICATE/GENTLE
WARM IRON

Anthropologie Collection
Philadelphia, PA 19115
(215)564-2313

Priliminary Cost Sheet

Size Category: Miss Description: Draped Cardigan Season: Fall
 Sample Size: 8 Fabric Category: Cotton/Jersey Estimate Post Cost: \$22
 Size Range: 4-12 Colors: Black, Pearl, Ocean Teal
 Created Date: 9/13/2009

Materials

	Yards	Price	Cost
Shell	2.3	8.94	20.5
Lining			
Interfacing			

Sub-Total Materials 20.56

Findings and Trims

	Quantity	Price	Cost
Buttons			
Zipper			
Thread	1	0.86	0.86

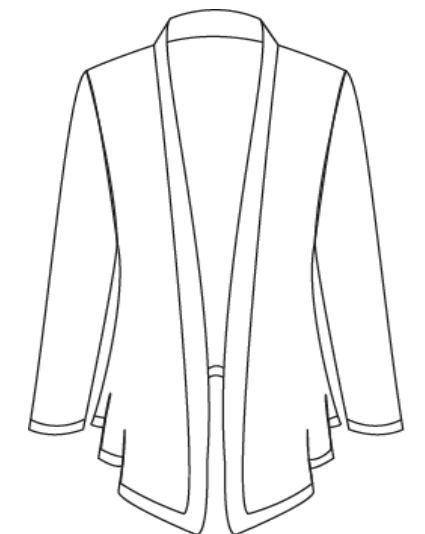
Sub-Total Findings & Trim .86

TOTAL MATERIALS 21.42

Labor (made in Hong Kong)

	Cost
Cutting	2.35
Marking	1.20
Grading	0.75
Labor	11.70
Packaging	0.25
Shipping	4.67
Import fees	8.00

Sketch



Hong Kong minnium wage
HK\$28 (~US\$3.60) per hour

Materials + **TOTAL LABOR** 28.92 = **TOTAL COST OF GOODS** 50.34
 + **GROSS MARGIN** 59 = **WHOLESALE PRICE** \$ 110