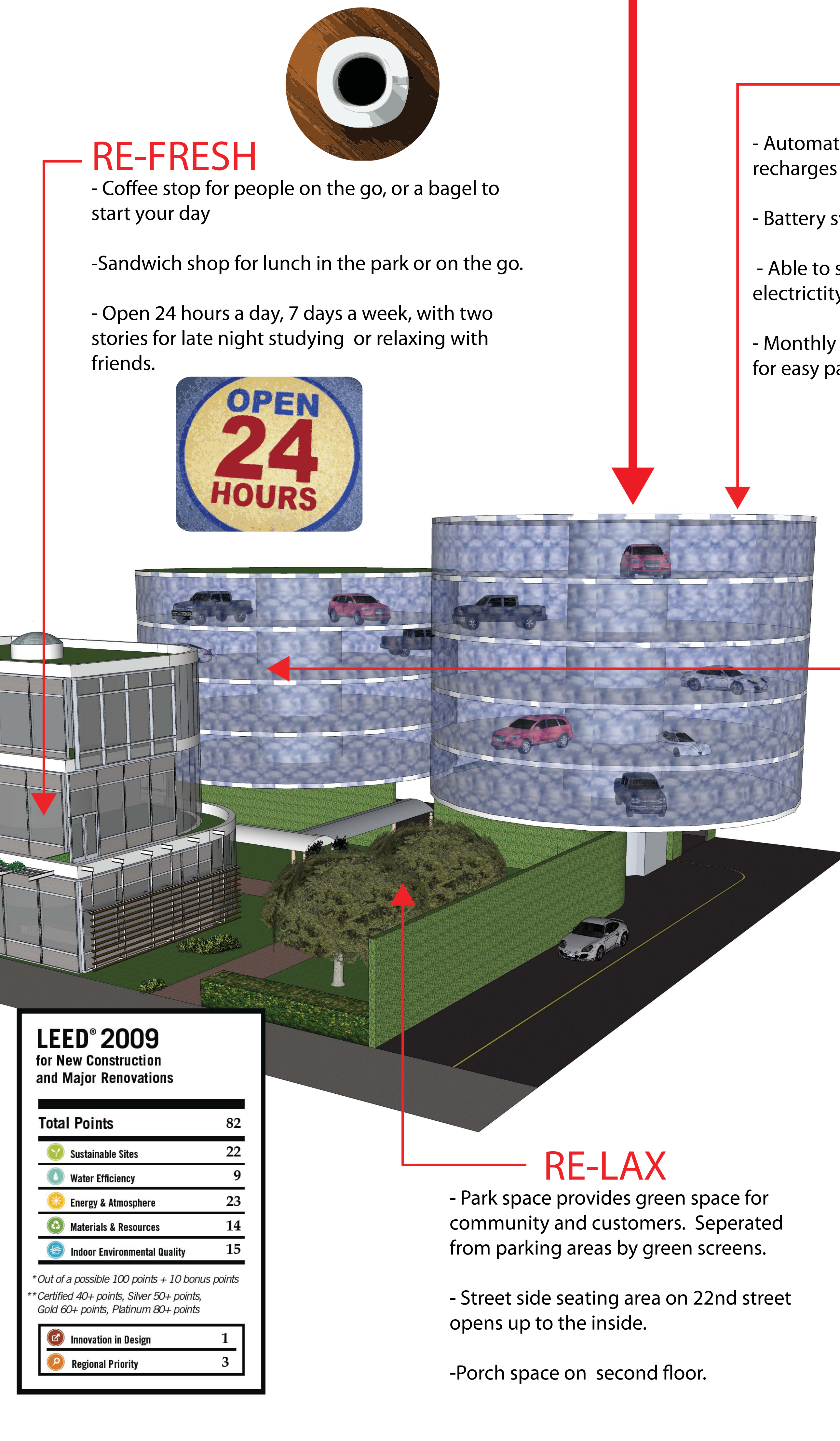
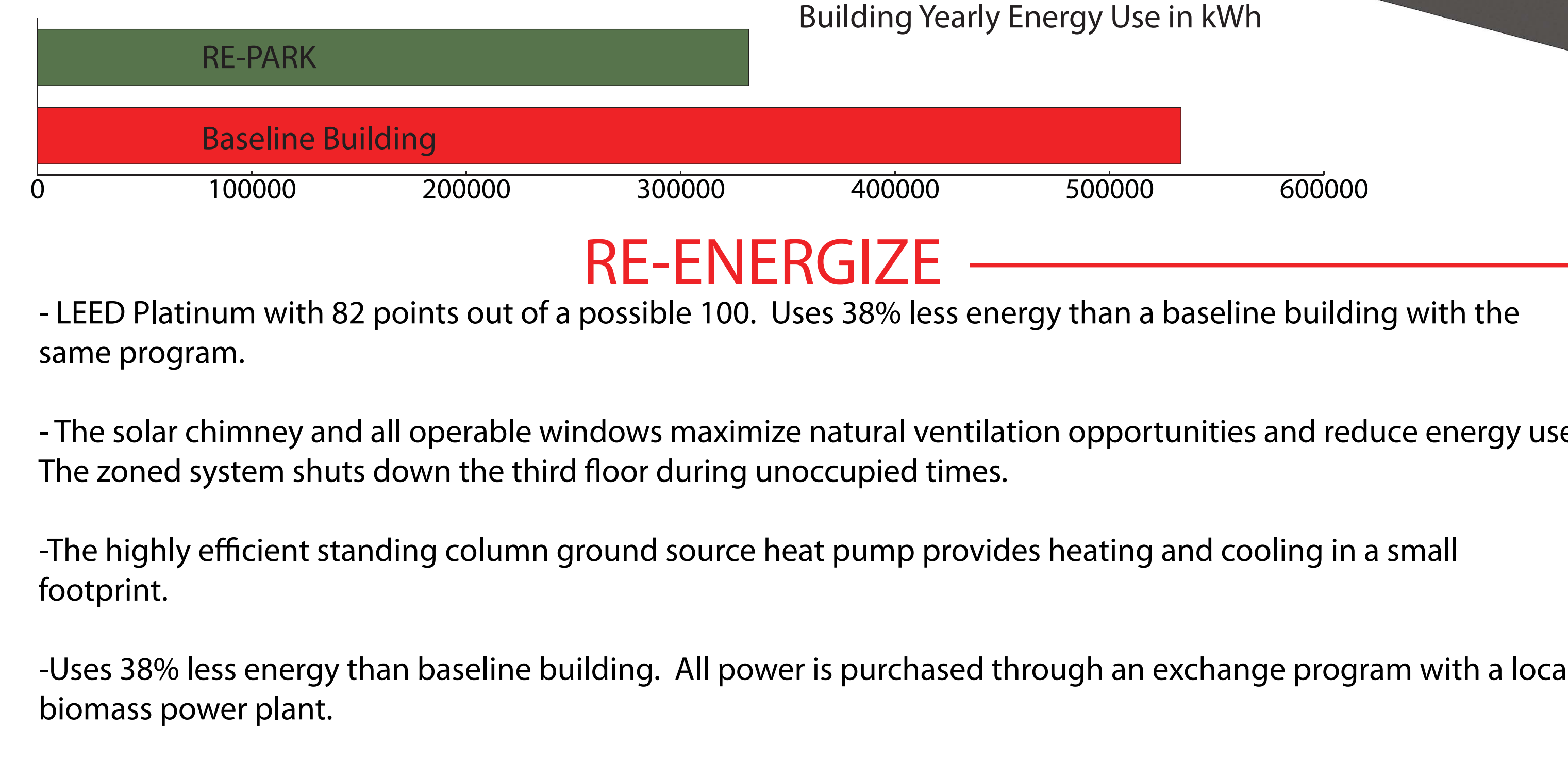
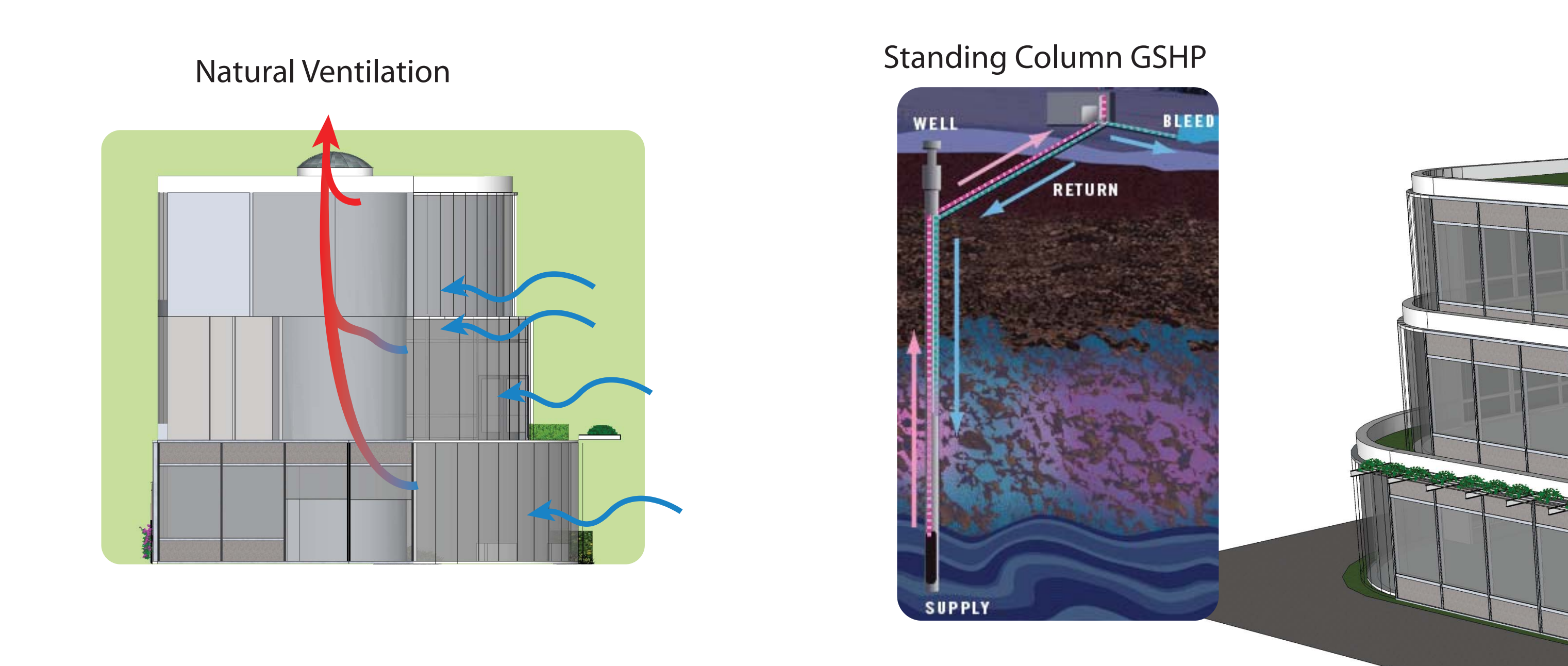
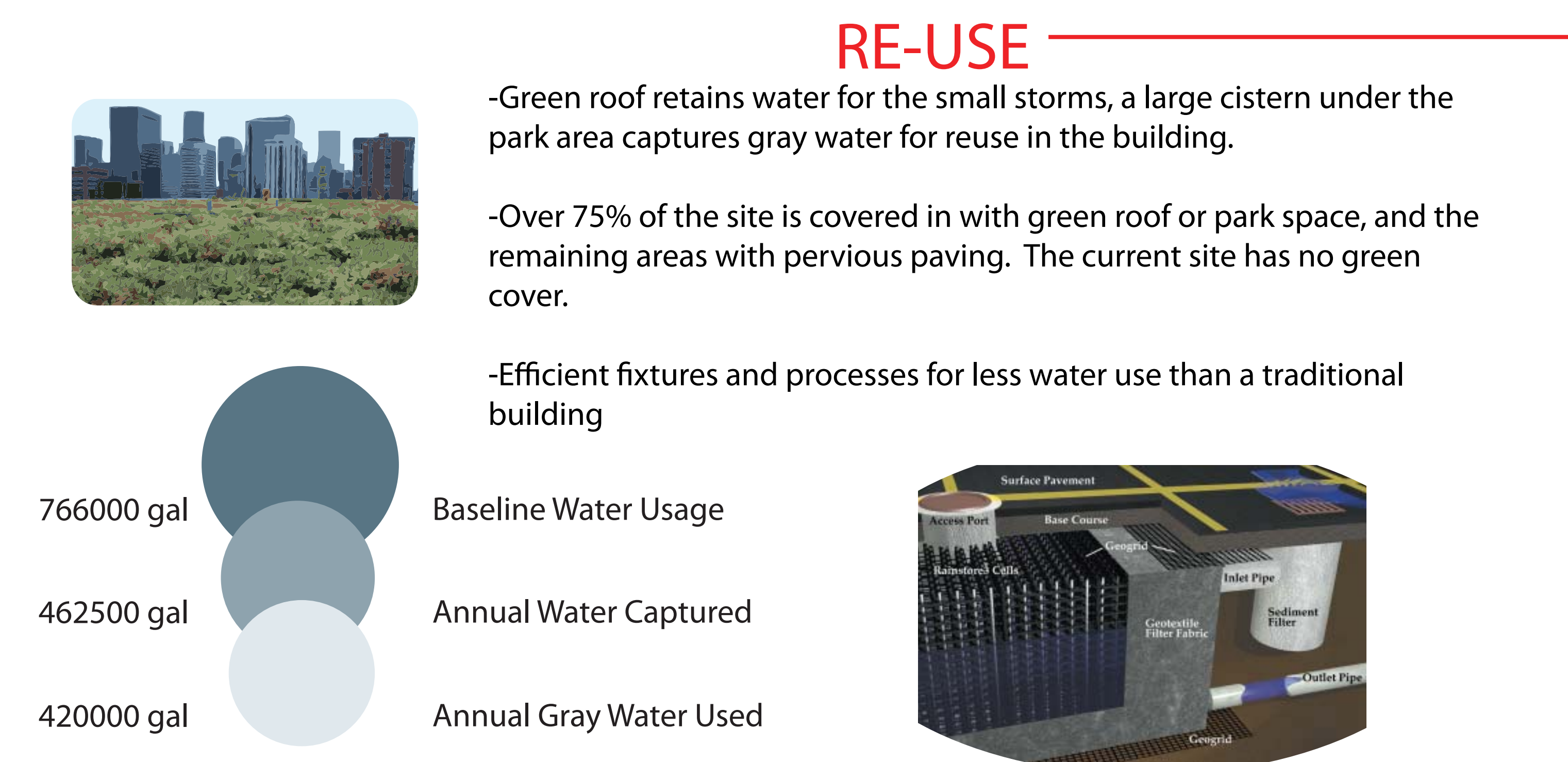
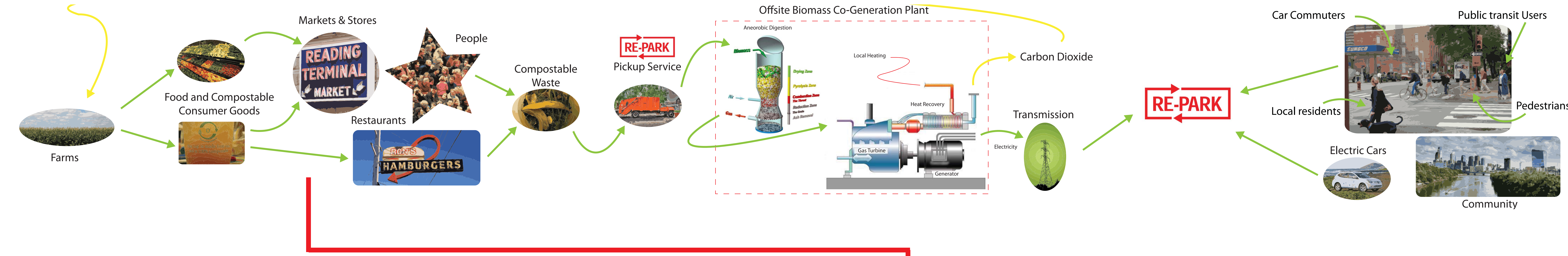




## BUSINESS CONCEPT

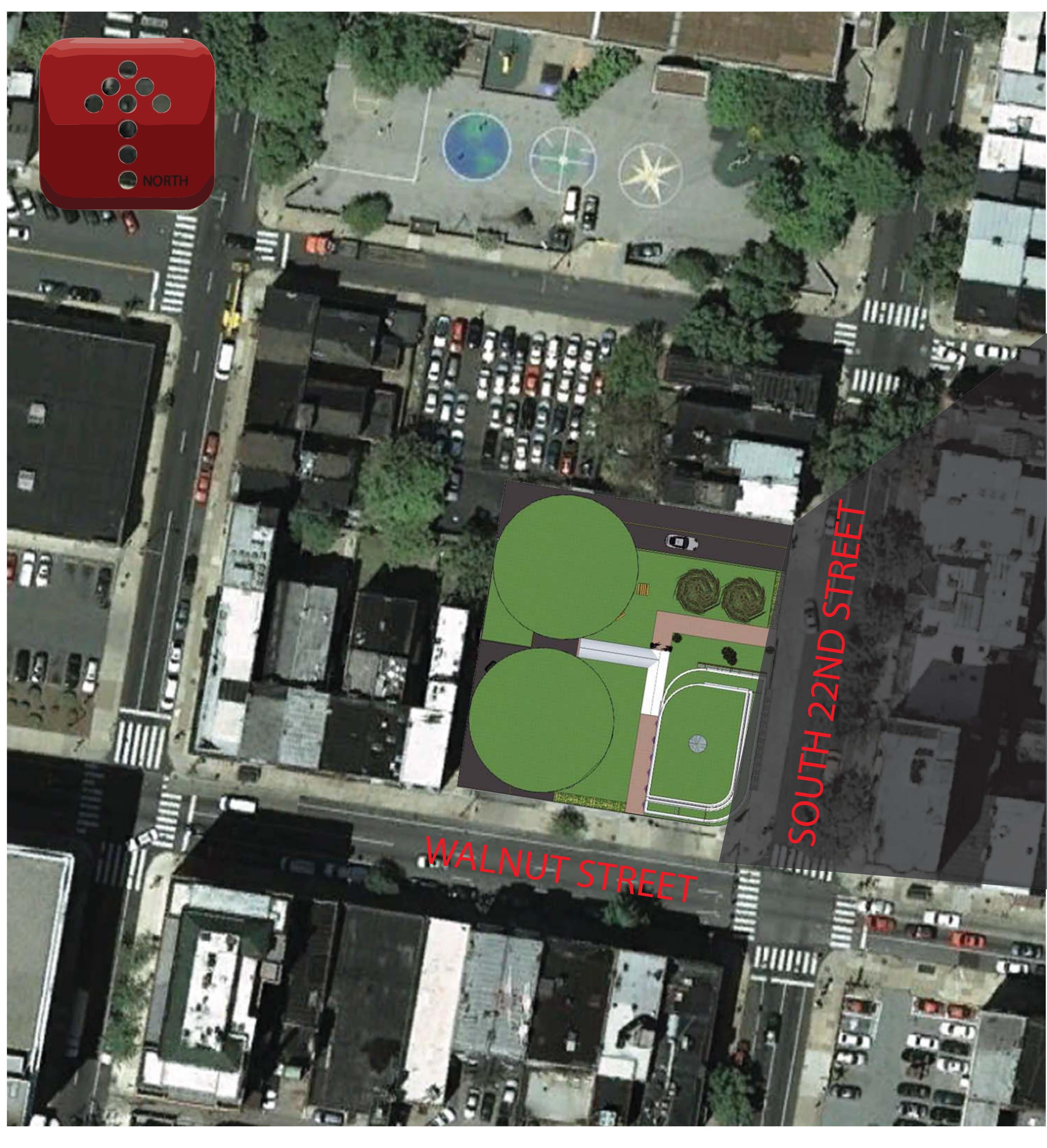
We are a local mission based organization committed to providing environmentally friendly parking with electrical vehicle battery charging as an option located on a sustainably developed site including a café to provide training to at risk individuals. Our clientele are offered the opportunity to recharge themselves at our retail café and community park adjacent to the parking facilities. We strive to provide disadvantaged/at risk individuals an opportunity to re-enter the work force through our job training/transitional mentoring program. Individuals participating in the work force re-entry program will gain skill sets that will enable them to successfully participate in mainstream society.



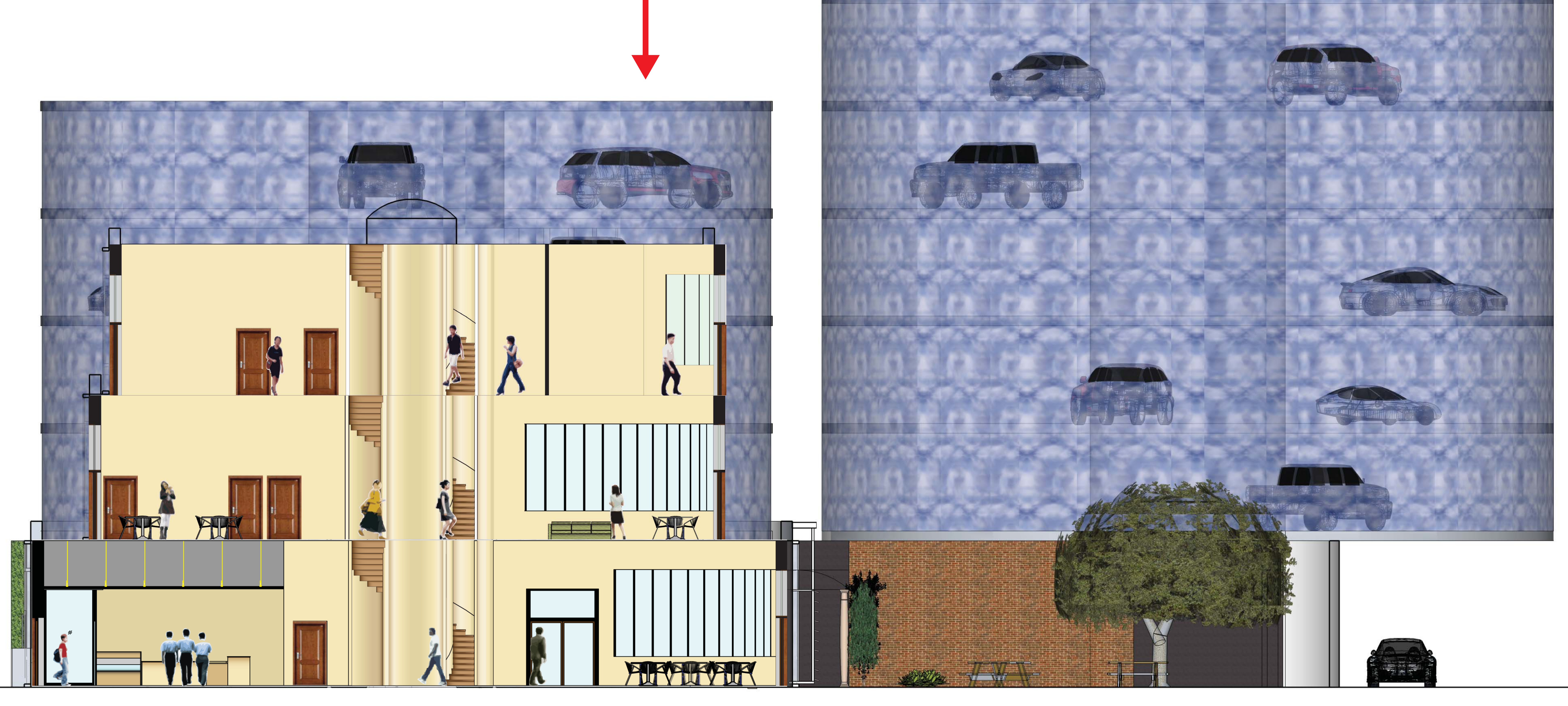
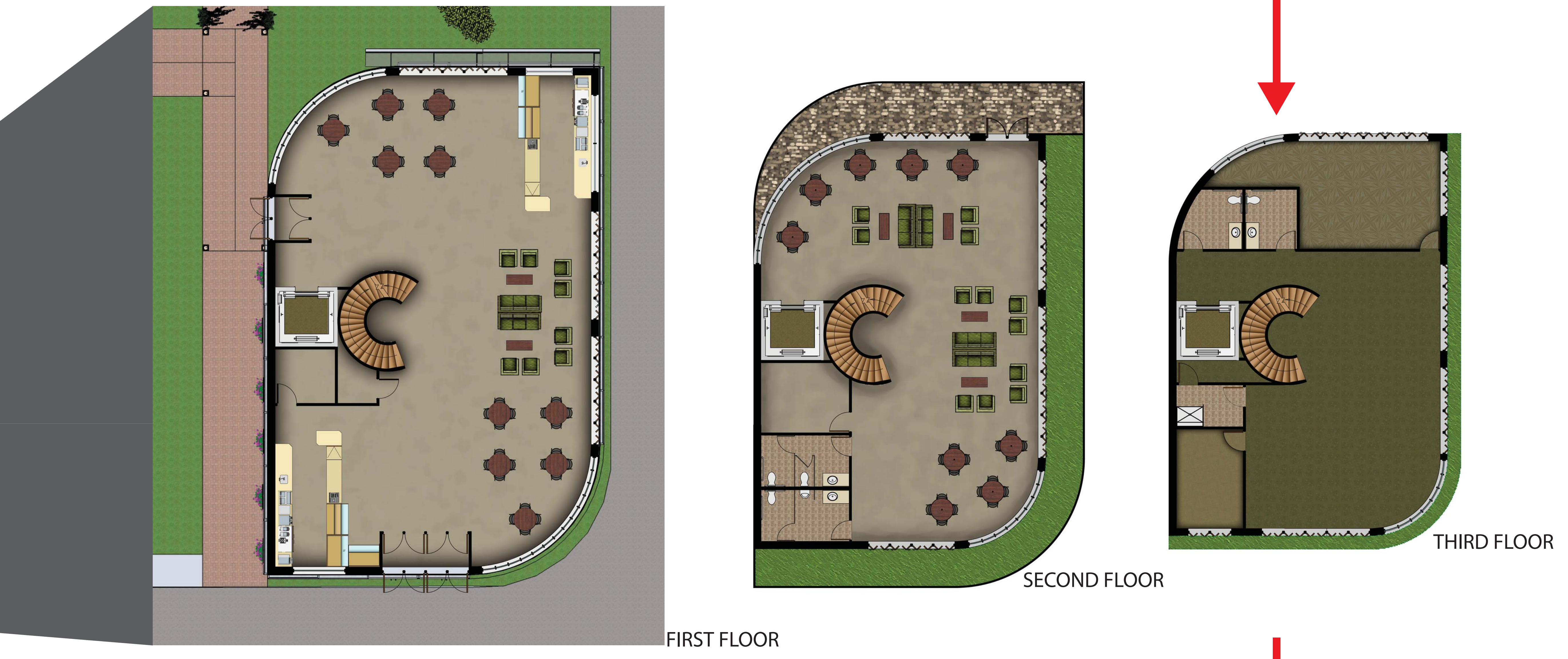
### LEED® 2009 for New Construction and Major Renovations

Total Points	82
Sustainable Sites	22
Water Efficiency	9
Energy & Atmosphere	23
Materials & Resources	14
Indoor Environmental Quality	15
LEED Accredited in Design	1
Regional Priority	3

\*Out of a possible 100 points = 10 bonus points  
\*\*Qualified LEED projects: Silver 50+ points, Gold 60+ points, Platinum 80+ points



## FLOOR PLANS 1/8" = 1'0"



## EAST ELEVATION AND SECTION 1/4" = 1'0"