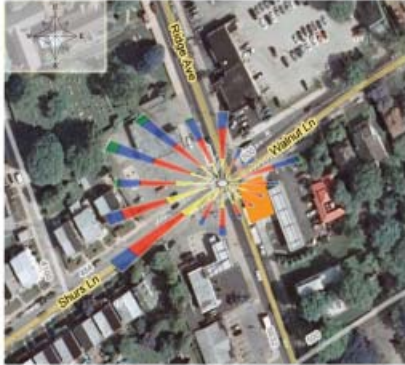
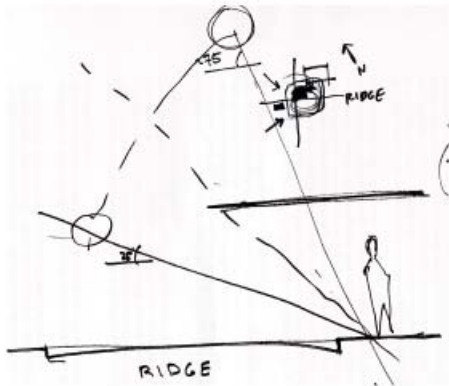


OBJECTIVE - REDESIGN SEPTA BUS SHELTER TO OPTIMIZE HUMAN COMFORT



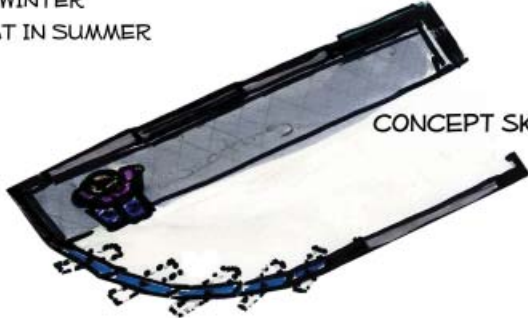
WIND ROSE ON SITE PLAN

LOUVERS  
- OPENS IN SUMMER FOR AIR CIRCULATION  
- CLOSES IN WINTER TO BLOCK WIND

LARGE OVERHANGS  
- SUN EXPOSURE IN WINTER  
- SHADING IN SUMMER



GREEN ROOF  
- INSULATES IN WINTER  
- DEFLECTS HEAT IN SUMMER



CONCEPT SKETCH

HUMAN COMFORT BUS SHELTER LEAH BROWN ADAM AGALLOCO ALEX DEWS