

PAGE  
MULLINS  
*work samples*

# table of contents

Johnson Family Residence  
ID 3782, Junior Year

IDEO Regional Headquarters  
ID 4754, Senior Year

Custom Design Pendant Light Fixture  
ID 3751, Senior Year

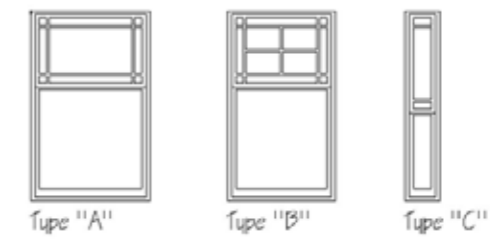
Public Library Learning Commons  
IDEC Student Competition, Senior Year

The Repose, Boutique Hotel  
ID 4755, Senior Year

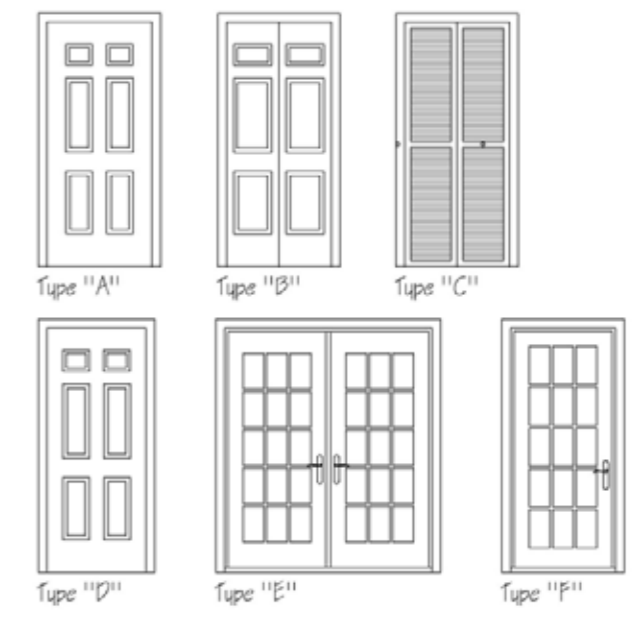
Mark	Description
	Exterior Masonry Wall (See Detail: 109/O/1)
	Exterior Wall with Siding (See Detail: 109/O/2)
	2" x 4" Interior Wall with GYP Board (See Detail: 109/O/2)
	2" x 6" Plumbing Wall (See Detail: 109/O/3)

General Notes-  
 All angles 45 degrees, unless noted otherwise  
 All doors centered on wall unless noted otherwise

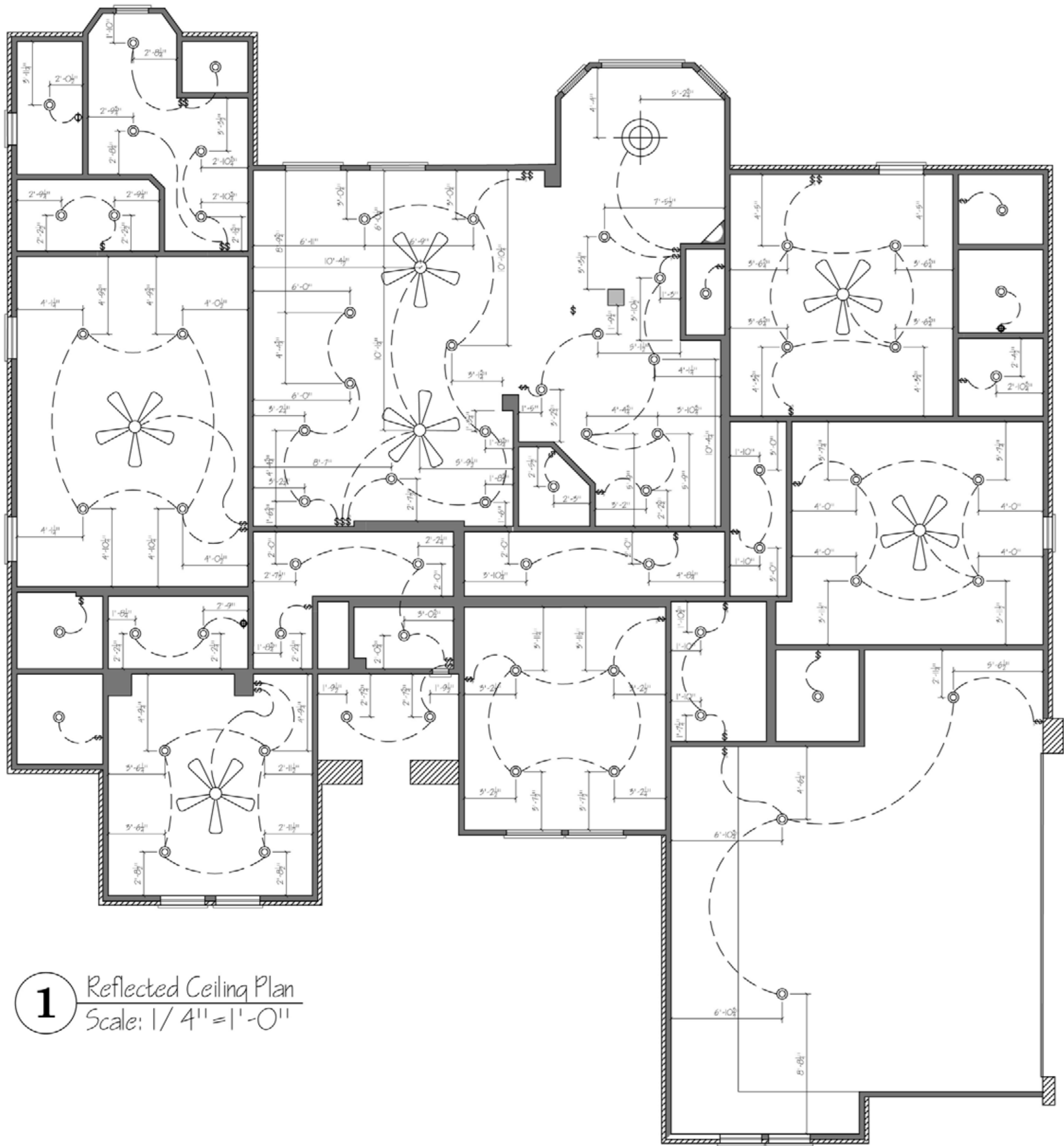
Key	Width	Height	Type	Material	Head Hgt. From F.F.
1	2'-0"	1'-0"	C	Wood	7'-9"
2	5'-5"	5'-5"	A	Wood	7'-9"
3	5'-5"	5'-5"	A	Wood	7'-9"
4	2'-7"	5'-5"	A	Wood	7'-9"
5	2'-7"	5'-5"	A	Wood	7'-9"
6	2'-0"	5'-5"	A	Wood	8'-4"
7	2'-9"	5'-5"	B	Wood	7'-9"
8	2'-0"	5'-5"	A	Wood	8'-4"
9	5'-0"	5'-5"	A	Wood	8'-4"
10	2'-0"	5'-5"	A	Wood	8'-4"
11	5'-5"	5'-5"	A	Wood	7'-9"
12	5'-5"	5'-5"	A	Wood	7'-9"
13	2'-0"	5'-5"	B	Wood	7'-9"
14	2'-0"	5'-5"	B	Wood	7'-9"
15	2'-9"	5'-5"	B	Wood	7'-9"
16	2'-9"	5'-5"	B	Wood	7'-9"
17	2'-9"	5'-5"	A	Wood	7'-9"
18	2'-9"	5'-5"	A	Wood	7'-9"



Key	Width	Height	Thickness	Type	Material	Remarks
1	5'-0"	7'-0"	2.25"	A	WOOD	
2	5'-0"	7'-0"	2.25"	A	WOOD	
3	5'-0"	7'-0"	2.25"	F	WOOD	
4	6'-0"	7'-0"	2.25"	E	WOOD	FRENCH
5	1'-8"	7'-0"	1.75"	D	WOOD	
6	2'-0"	7'-0"	1.75"	D	WOOD	
7	2'-0"	7'-0"	1.75"	D	WOOD	
8	2'-0"	7'-0"	1.75"	D	WOOD	
9	5'-0"	7'-0"	1.75"	D	WOOD	
10	2'-0"	7'-0"	1.75"	D	WOOD	
11	5'-0"	7'-0"	1.75"	B	WOOD	9FOLD
12	5'-0"	7'-0"	1.75"	D	WOOD	
13	2'-0"	7'-0"	1.75"	D	WOOD	
14	2'-0"	7'-0"	1.75"	D	WOOD	
15	5'-0"	7'-0"	1.75"	B	WOOD	
16	2'-8"	7'-0"	1.75"	D	WOOD	
17	2'-8"	7'-0"	1.75"	D	WOOD	
18	2'-0"	7'-0"	1.75"	D	WOOD	
19	5'-0"	7'-0"	1.75"	D	WOOD	
20	5'-0"	7'-0"	1.75"	D	WOOD	
21	2'-0"	7'-0"	1.75"	D	WOOD	
22	2'-0"	7'-0"	1.75"	D	WOOD	
23	2'-0"	7'-0"	1.75"	D	WOOD	
24	7'-0"	7'-0"	1.75"	D	WOOD	
25	5'-0"	7'-0"	1.75"	C	WOOD	CLOSET



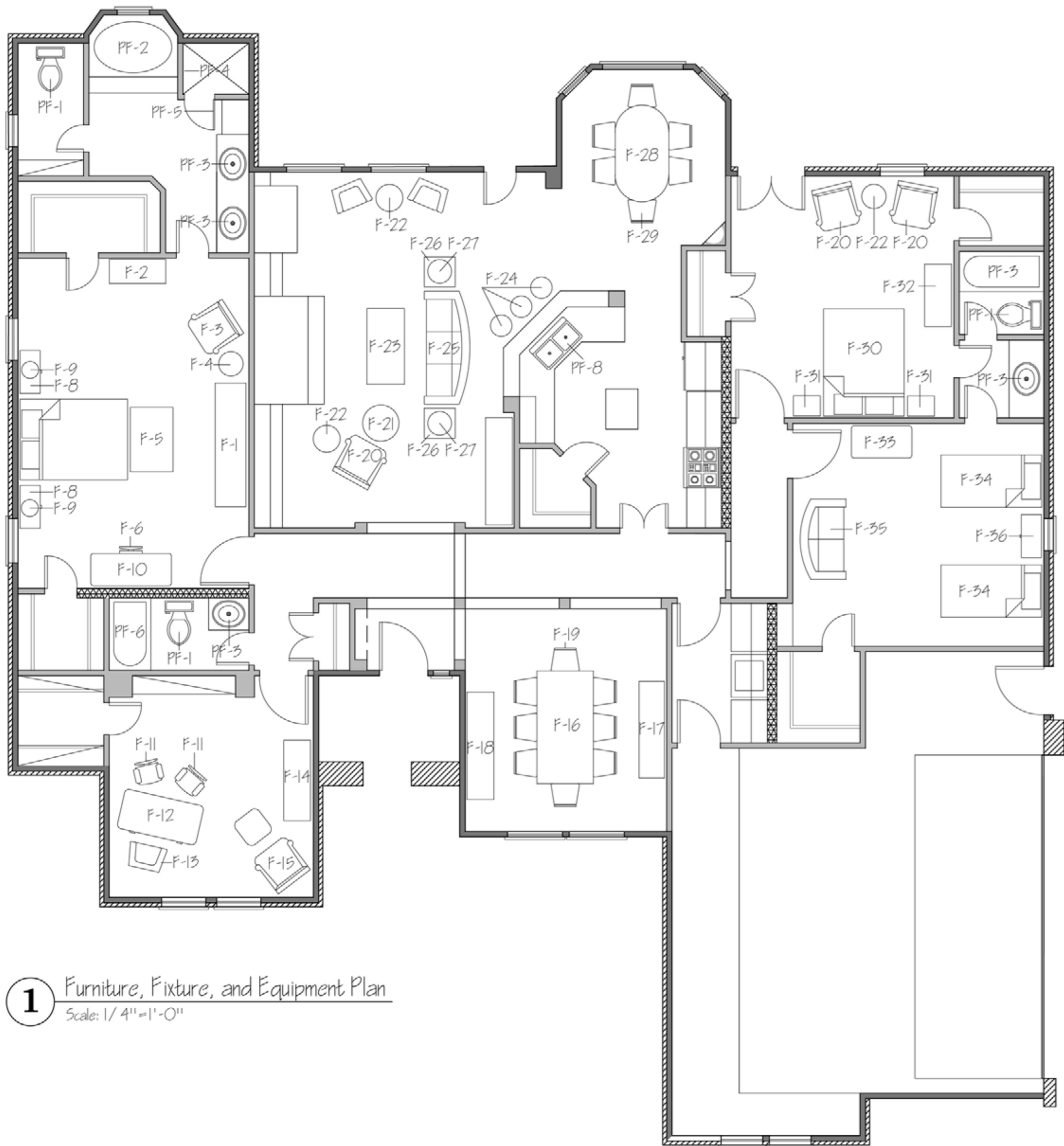
**1** Floor Plan  
 Scale: 1/4" = 1'-0"



**1** Reflected Ceiling Plan  
 Scale: 1/4" = 1'-0"

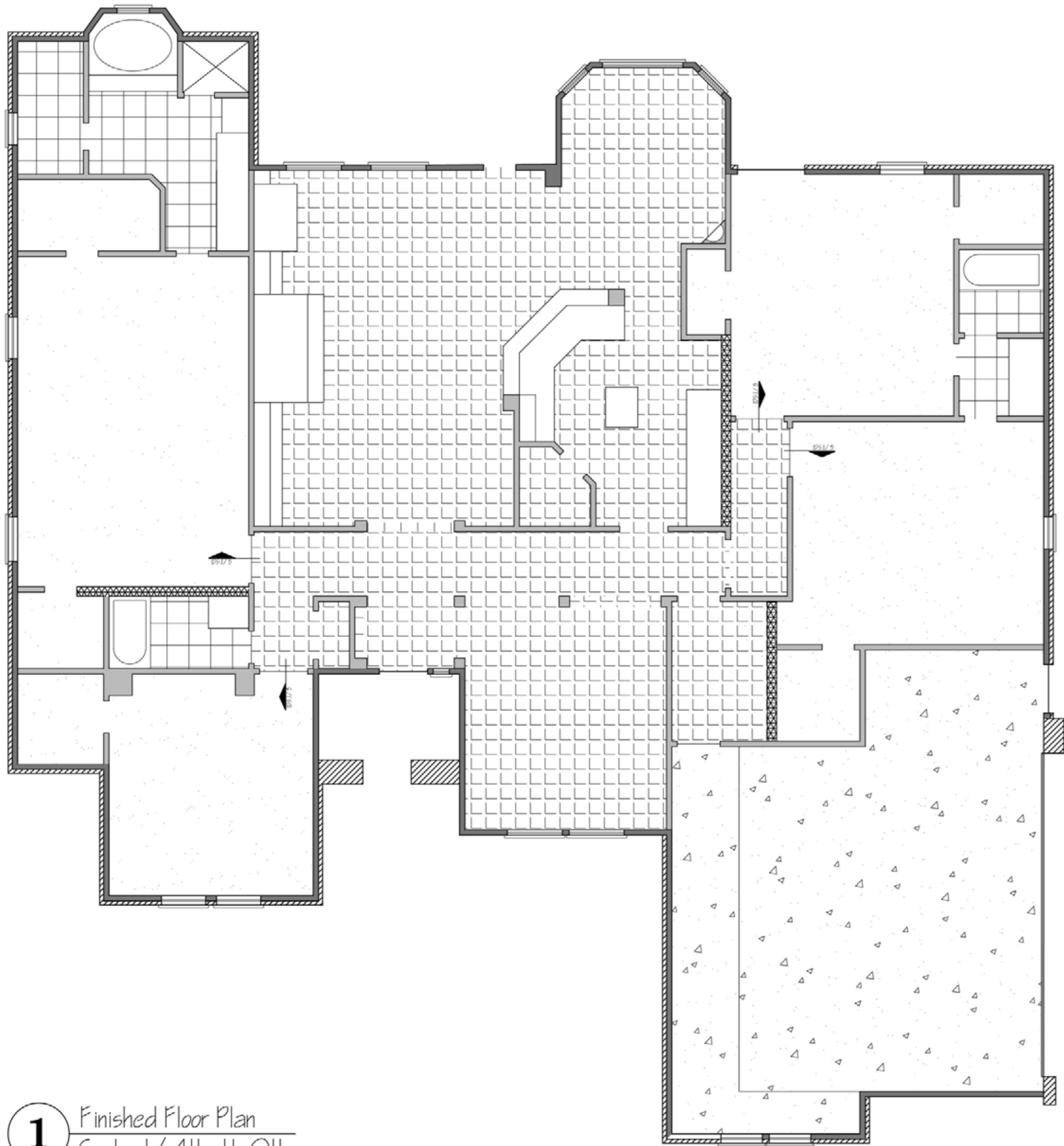
Legend		
Mark	Symbol	Description
L1		Recessed Can Light
L2		Ceiling Fan
L3		Suspended Chandelier
N/A		Switch
N/A		3-Way Switch
N/A		Light-Fan-Heater Switch
N/A		Light-Fan Switch

General Notes-  
 Unless otherwise noted, all electric ceiling mount fixtures to be centered within room.  
 Ceiling height throughout at 10'-0" AFF



**1** Furniture, Fixture, and Equipment Plan  
 Scale: 1/4" = 1'-0"

Legend	
Mark	Description
F-1	Robert Lighton Sir William Emerson X Grande Armoire
F-2	Robert Lighton Findlayson Campaign Chest
F-3	Oly Studio Leo Chair
F-4	Oly Studio Ichibad Round Side Table
F-5	Oly Studio Jonathan Ottoman
F-6	Windsor Smith Home Shoshana Dinir Chair
F-7	Windsor Smith Cane Side Table
F-8	Oly Studio Paris Table Lamp
F-9	Niemann Weeks Loire Bed
F-10	Baker Paris Writing Table
F-11	Reception Chair
F-12	Desk
F-13	Desk Chair
F-14	Bookshelf
F-15	Reading Chair and Ottoman
F-16	Dining Table
F-17	China Cabinet
F-18	Buffet
F-19	Dining Chair
F-20	Chair
F-21	Ottoman
F-22	Round Side Table
F-23	Coffee Table
F-24	Bar Stool
F-25	Sofa
F-26	End Table
F-27	Lamp
F-28	Kitchen Table
F-29	Dining Chair
F-30	Queen Bed
F-31	Nightstand
F-32	Dresser
F-33	Dresser
F-34	Twin Bed
F-35	Settee
F-36	Nightstand
P-1	Toilet
P-2	Bathtub
P-3	Bathroom Sink
P-4	Shower Head and Fixtures
P-5	Shower Door
P-6	Bathtub
P-7	Bathtub
P-8	Kitchen Sink

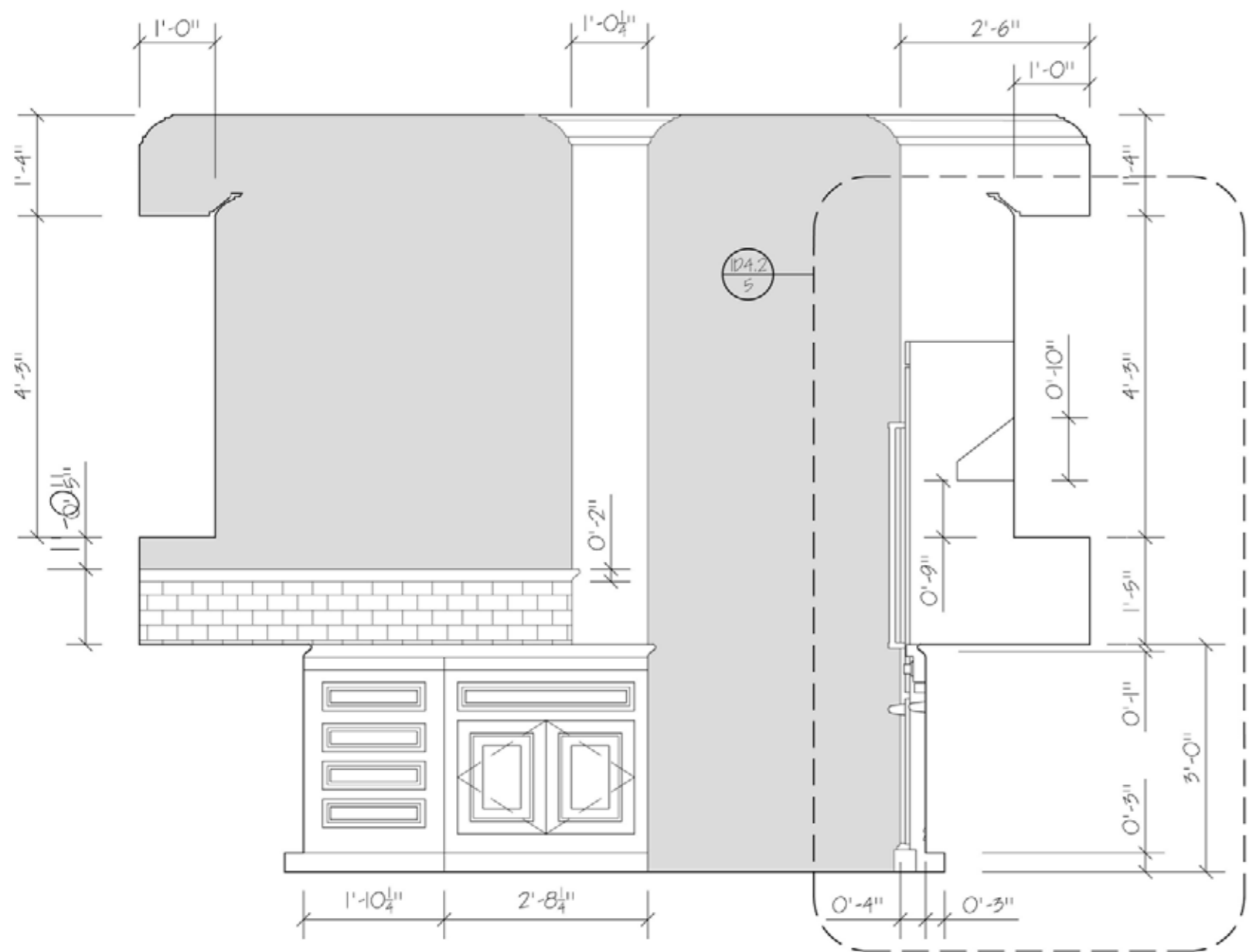


**1** Finished Floor Plan  
Scale: 1/4" = 1'-0"

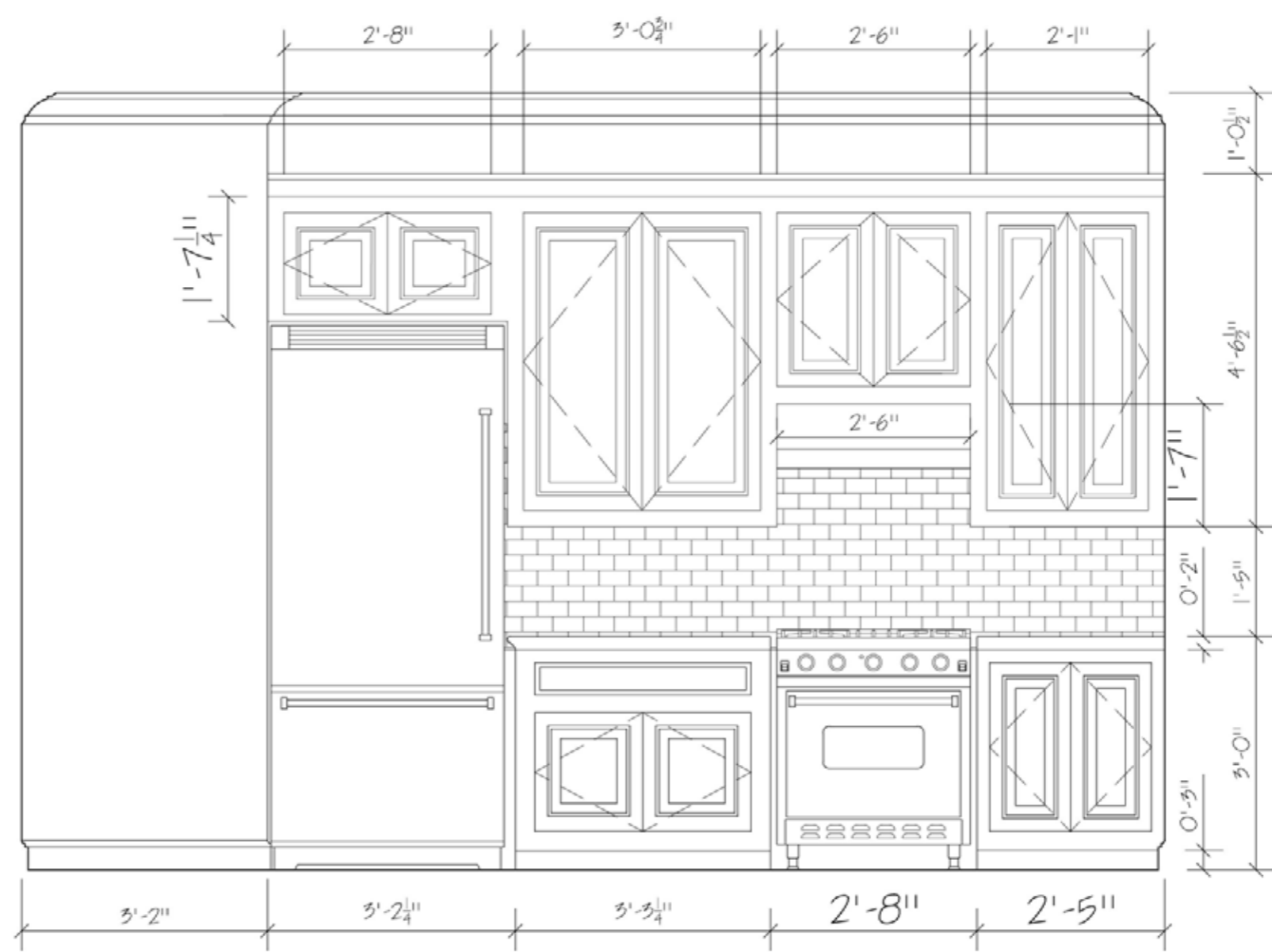
Finish Legend							
Mark	Manufacturer	Model	Name	Color	Size	Spec	Notes
P1	Benjamin Moore	Classic Colors	Lafayette Green	HC-155	N/A	Eggshell	
P2	Benjamin Moore	Off-White Colors	Sea Pearl	OC-19	N/A	Gloss	
P3	Benjamin Moore	Off-White Colors	Mooreline	OC-56	N/A	Semi-Gloss	
P4	Benjamin Moore	Off-White Colors	White Dove	OC-17	N/A	Semi-Gloss	
P5	Benjamin Moore	Classic Colors	Pearl Gray	865	N/A	Eggshell	
P6	Benjamin Moore	Classic Colors	Fresno	O20	N/A	Eggshell	
P7	Benjamin Moore	Classic Colors	Gold Field	292	N/A	Eggshell	
P8	Benjamin Moore	Classic Colors	Etched	626	N/A	Eggshell	
P9	Benjamin Moore	Classic Colors	Sweet Pear	589	N/A	Eggshell	
CP11	Shaw	N/A	Manneram II	Pewter	15'	N/A	Color # 00742
WC1	Cole & Son, Ltd.	Tamarisk	Brush Flower	Lavender	52"	N/A	
WC2	Cole & Son, Ltd.	Waldorf	Shadow Trellis	Coral	20.5" wide	N/A	Product # 67 / 7031
WC3	Schumacher	Elements	Nami Rushcloth	Cork	56"	N/A	Product # SKU-5002860
WC4	Schumacher	Classic	Tolle Florissante	Peopnia	27"	N/A	Product # SKU-5004093
WC5	Schumacher	Classic	Haddon Hall Danish	Maize	27"	N/A	Product # SKU-5004170
WD1	Armstrong	Tropical Exotic	Kona Wood	Mayan Tepez	5.25" x 7.5" x 4'	HartGuard Deluxe	Product # KO131M1
S11	Sherrin Williams	Wood Classics	Brazilnut	SW 5150-K	N/A	N/A	
G1	Laticrete	Spectral-OCK Pro	N/A	Almond	N/A	N/A	Color # B5
T1	DalTile	Serra Aire	Cashmere	N/A	16" x 16"	N/A	
T2	DalTile	Foto One	Fleur de Lis Accent	Brushed Suede	6" x 6"	Brushed	Color # A105

Finish Schedule										
Room No.	Room Name	Floor	Base	Walls				Height	Ceiling	Notes
				North	East	South	West			
101	Living	WD1	S11	P1	P1	P1	P1	10'-0"	GYP Board- P3	
102	Breakfast	WD1	S11	WC5	WC5	WC5	WC5	10'-0"	GYP Board- P4	
103	Kitchen	WD1	S11	WC5	WC5,12	WC5	WC5,12	10'-0"	GYP Board- P4	
104	Master Bed	CP11	P2	P5	P5	P5	P5	10'-0"	GYP Board- P4	
105	Master Bath	T1,G1	P2	WC4	WC4	WC4	WC4	10'-0"	GYP Board- P4	
106	Guest Bath	T1,G1	P2	WC2	WC2	WC2	WC2	10'-0"	GYP Board- P4	
107	Study	CP11	P2	P6	P6	P6	P6	10'-0"	GYP Board- P4	
108	Entry	WD1	P2	P7	P7	P7	P7	10'-0"	GYP Board- P4	
109	Gallery	WD1	P2	P7	P7	P7	P7	10'-0"	GYP Board- P4	
111	Dining	WD1	P2	WC5	WC5	WC5	WC5	10'-0"	GYP Board- P4	
110	Utility	WD1	P2	P7	P7	P7	P7	10'-0"	GYP Board- P4	
112	Bed One	CP11	P2	P8	P8	P8	P8	10'-0"	GYP Board- P4	
113	Bed Two	CP11	P2	P9	P9	P9	P9	10'-0"	GYP Board- P4	
114	Adjoining Bath	T1,G1	P2	WC1	WC1	WC1	WC1	10'-0"	GYP Board- P4	

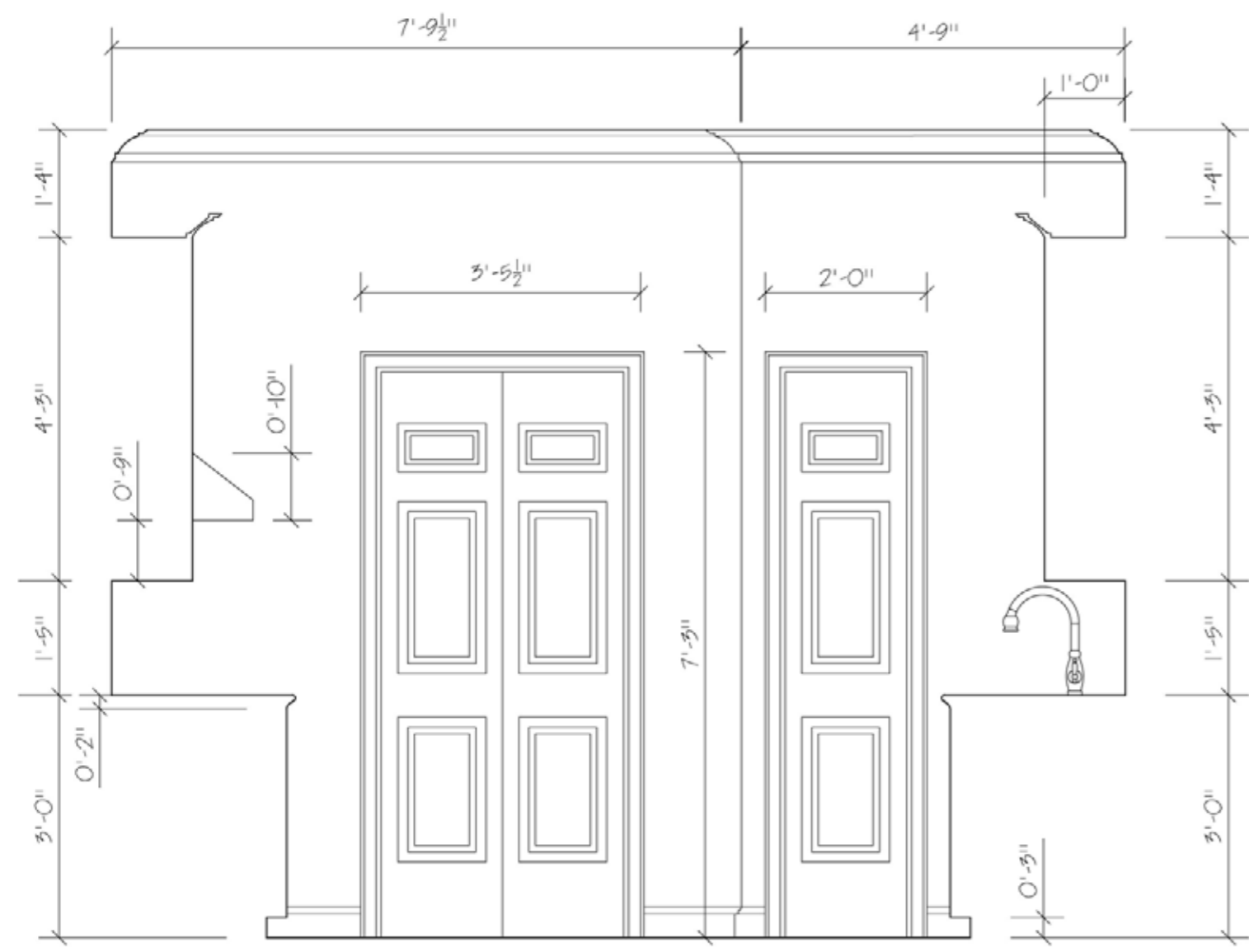
Legend			
Mark	Description	Mark	Description
	Armstrong Wood Flooring		DalTile Flooring Tile
	Shaw Carpet		Concrete



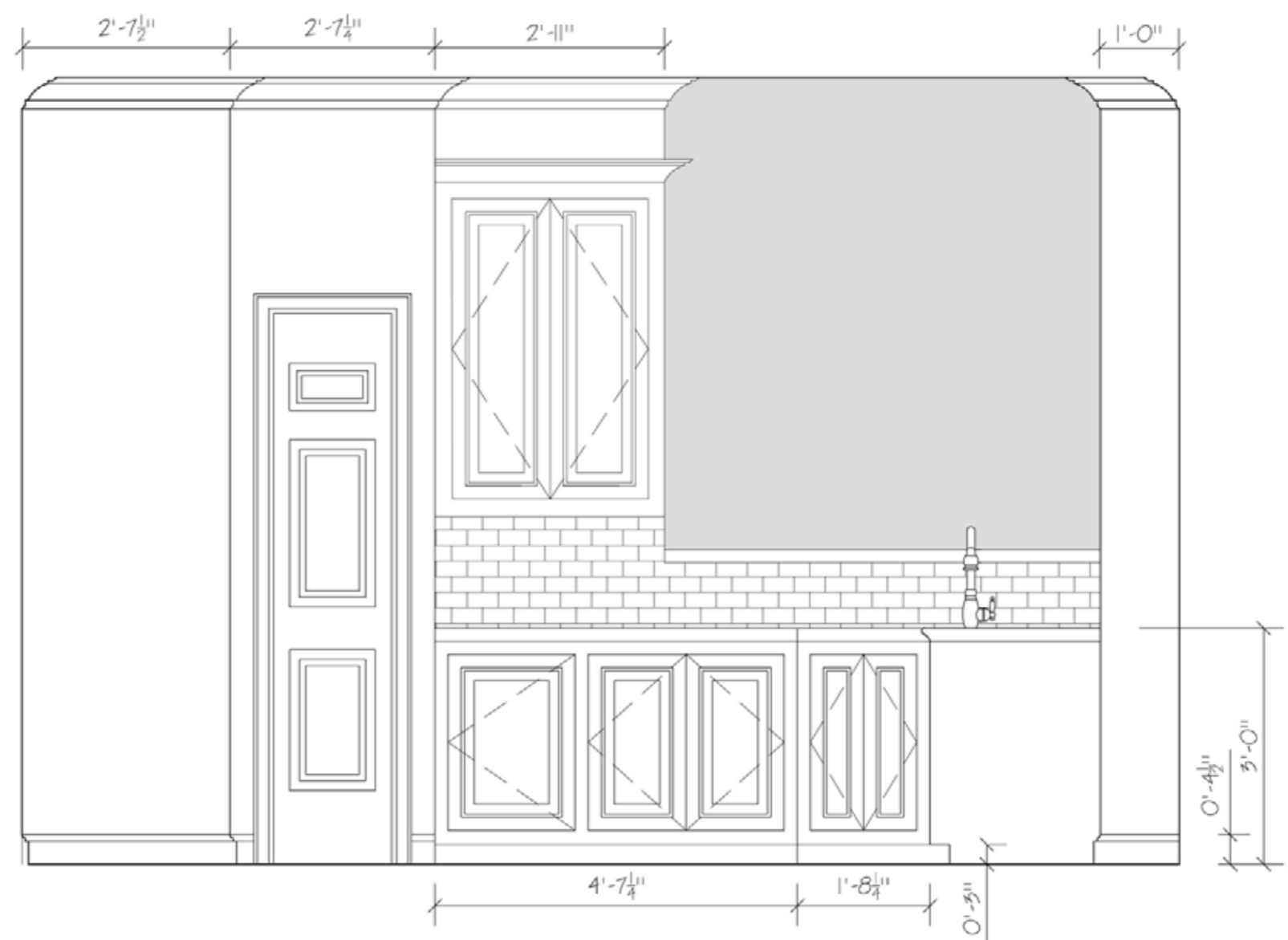
**1** N Kitchen  
Scale: 3/4" = 1'-0"



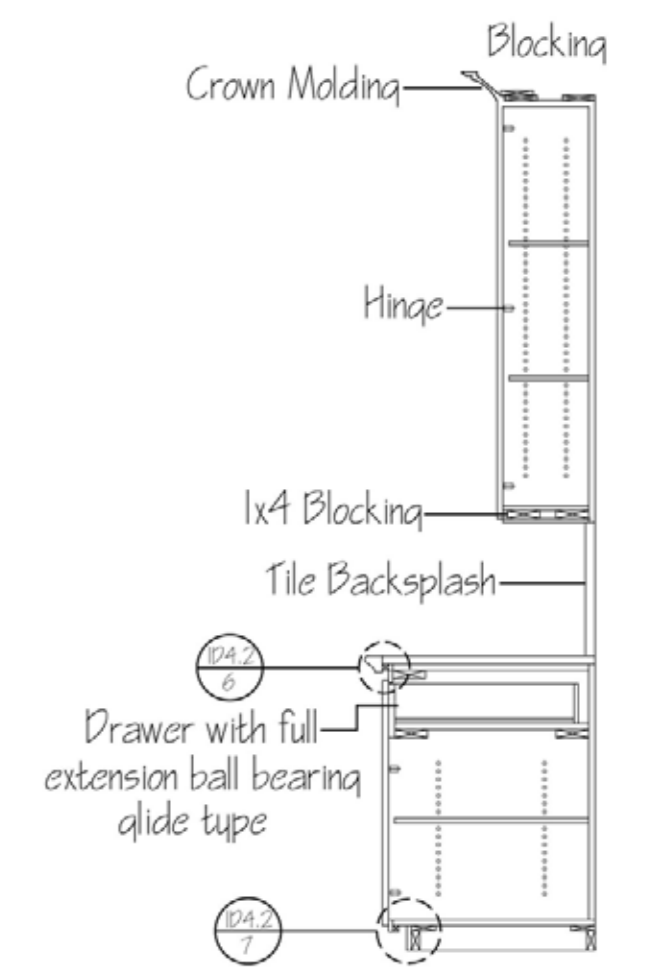
**2** E Kitchen  
Scale: 3/4" = 1'-0"



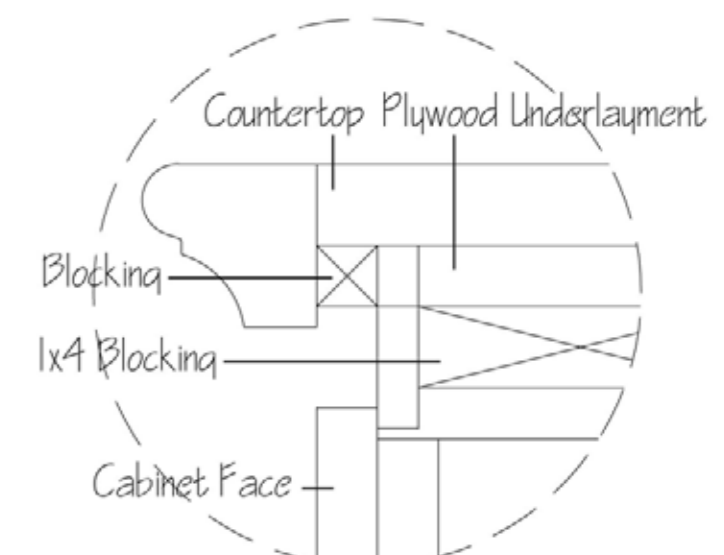
**3** S Kitchen  
Scale: 3/4" = 1'-0"



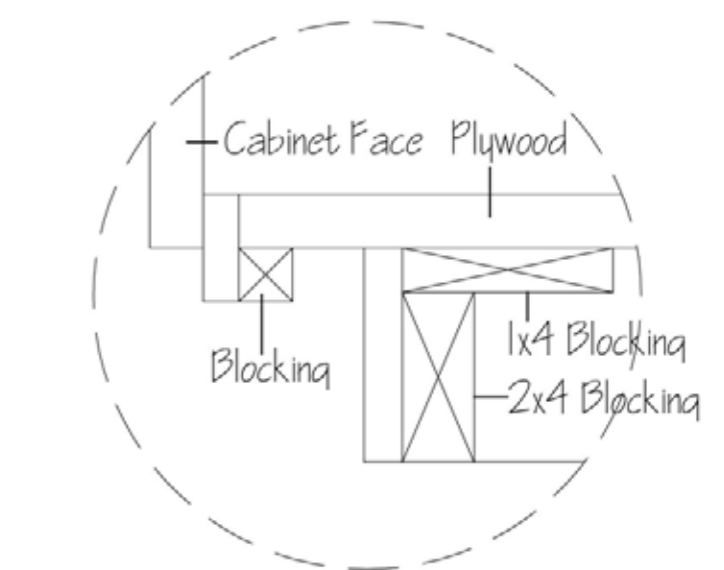
**4** W Kitchen  
Scale: 3/4" = 1'-0"



**5** Cabinet Section  
Scale: 3/4" = 1'-0"



**6** Cabinet Section Detail  
Scale: Full Scale



**7** Cabinet Section Detail  
Scale: Full Scale

# IDEO regional headquarters

ID 4754 Studio Project, Senior Year

# IDEO regional headquarters



The purpose of this project was to design a regional office for the design and innovation consulting firm, IDEO. Emphasis was placed on learning to manipulate and arrange systems furniture, as well as considering way-finding and circulation in a multi-use facility.

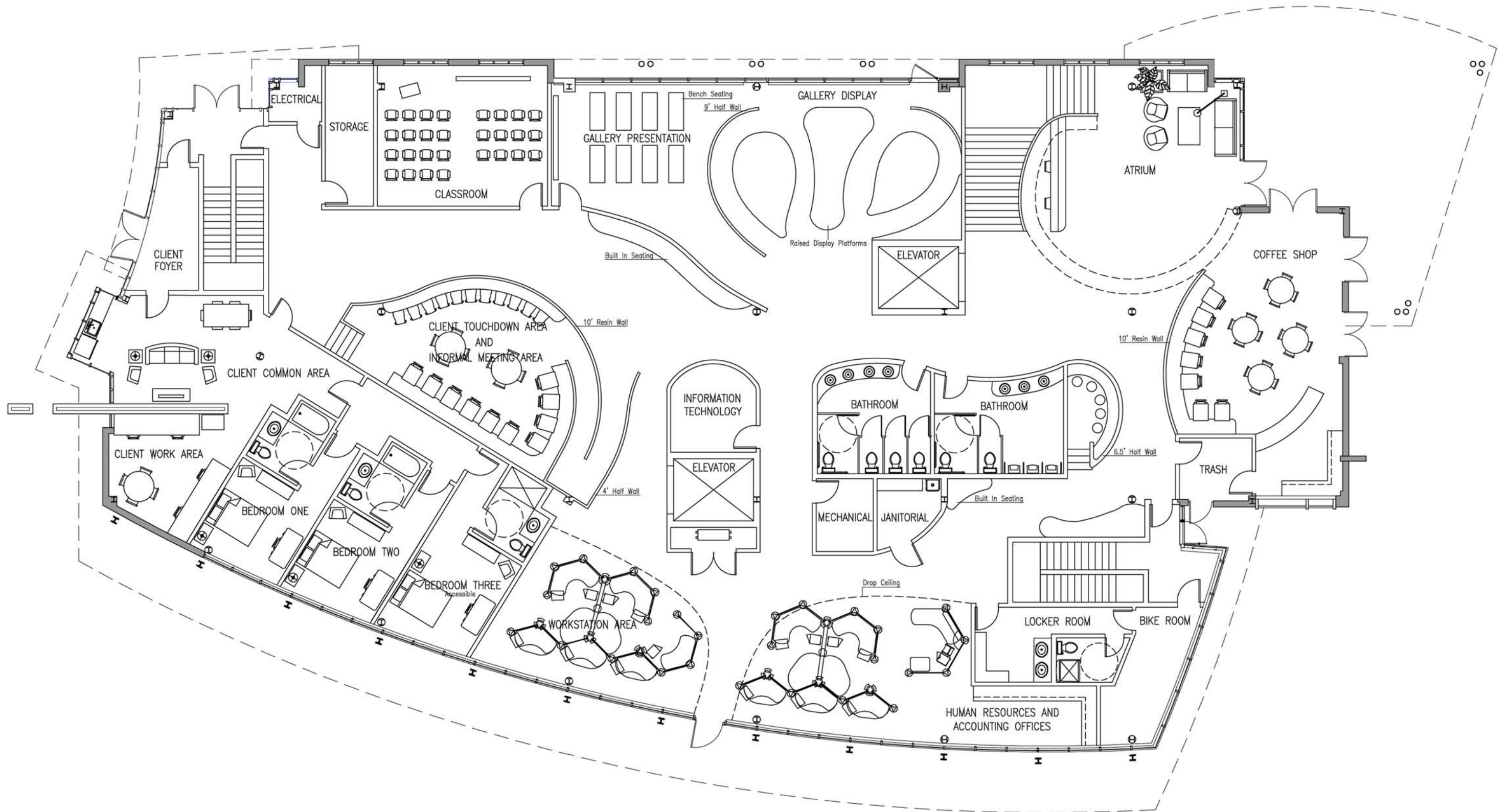
The driving focus of my space planning became to create paths of travel throughout the space that draw employees along them, therefore encouraging interaction and collaboration.

The people of IDEO practice what they call "design thinking." This creative process slowly evolves a notion from one designer's mind to the next, constantly maturing and adapting into a complete, thorough idea.

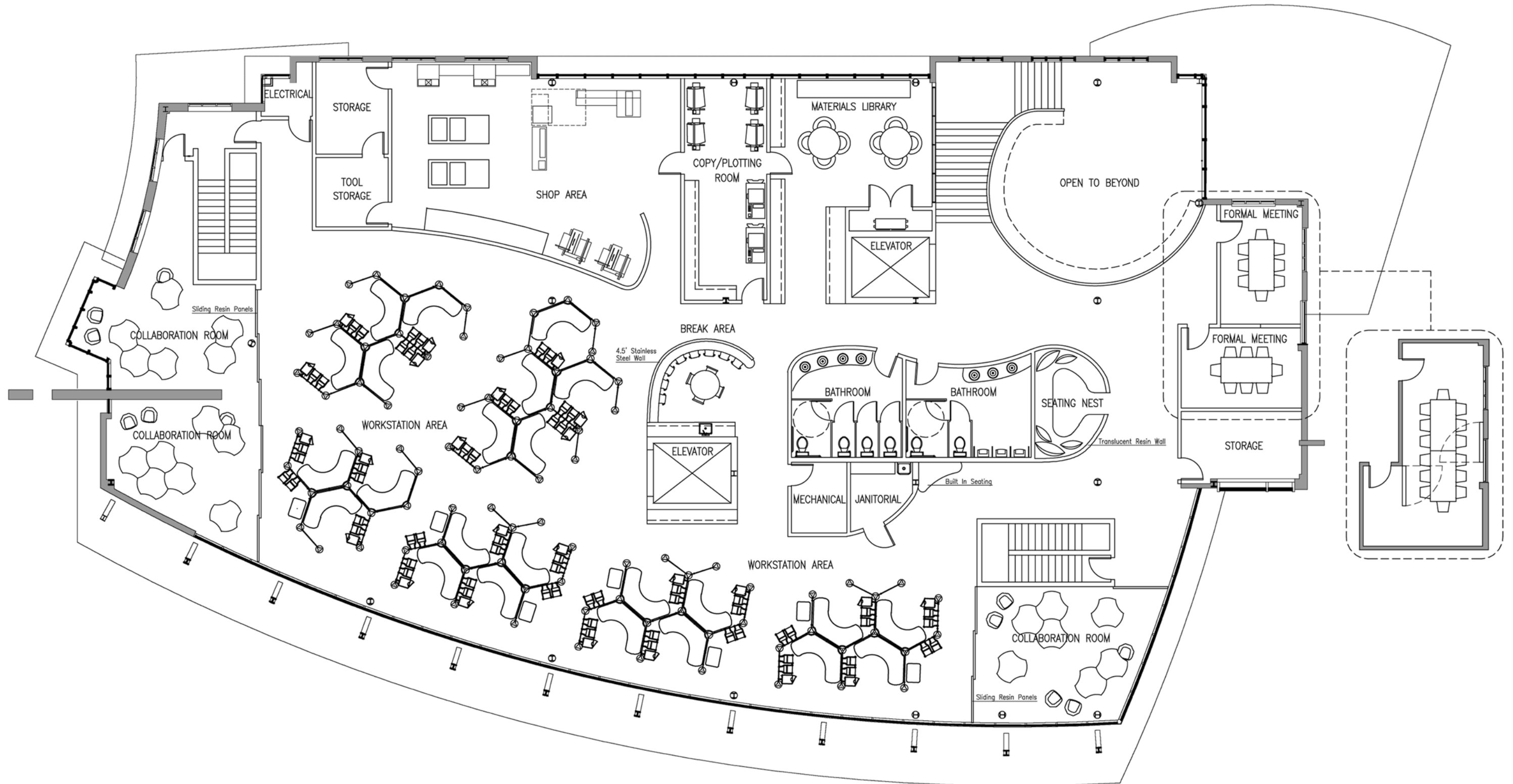
The organic and uncontrolled process of design thinking mimics in many ways the qualities of water: fluidity, transparency, mobility, adaptability. The concept for this space expresses that wandering, permeable and constant flow of thought that defines the true essence of IDEO



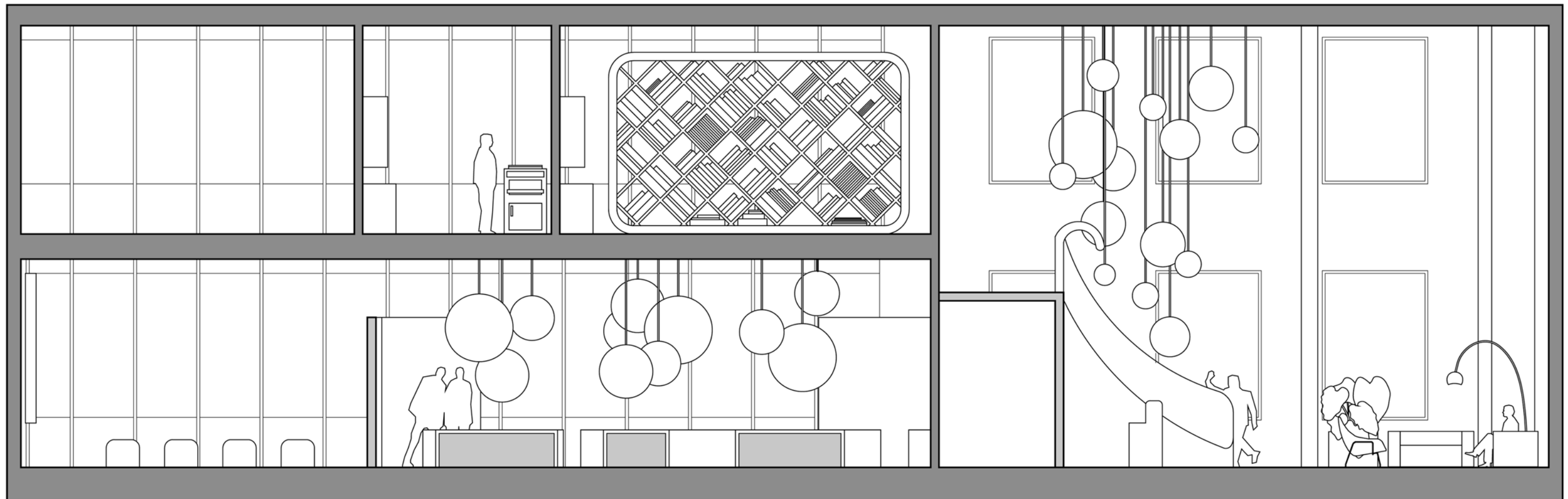
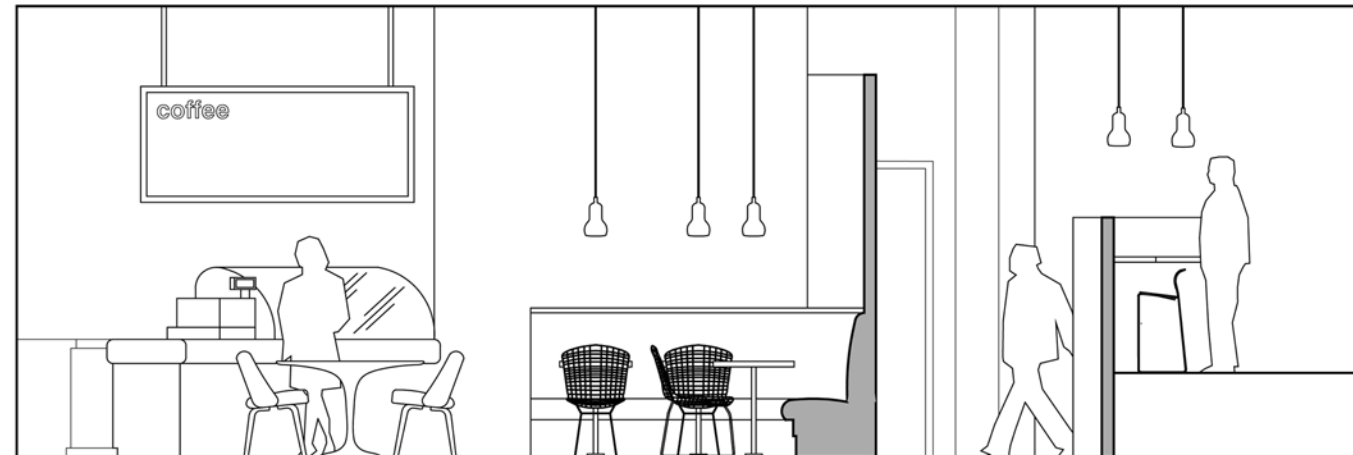
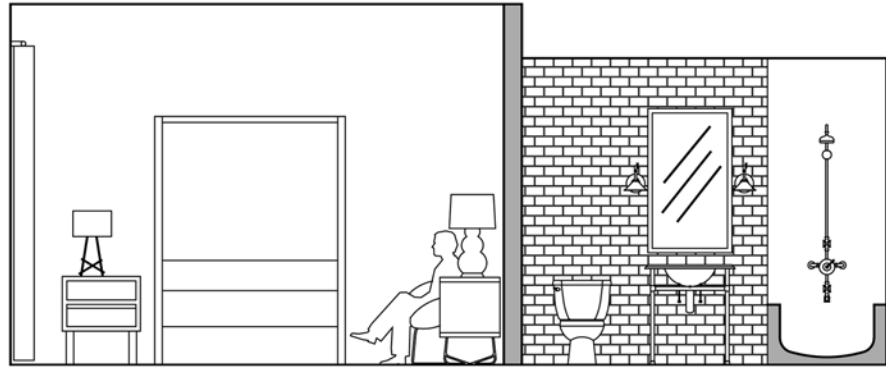
# IDEO regional headquarters



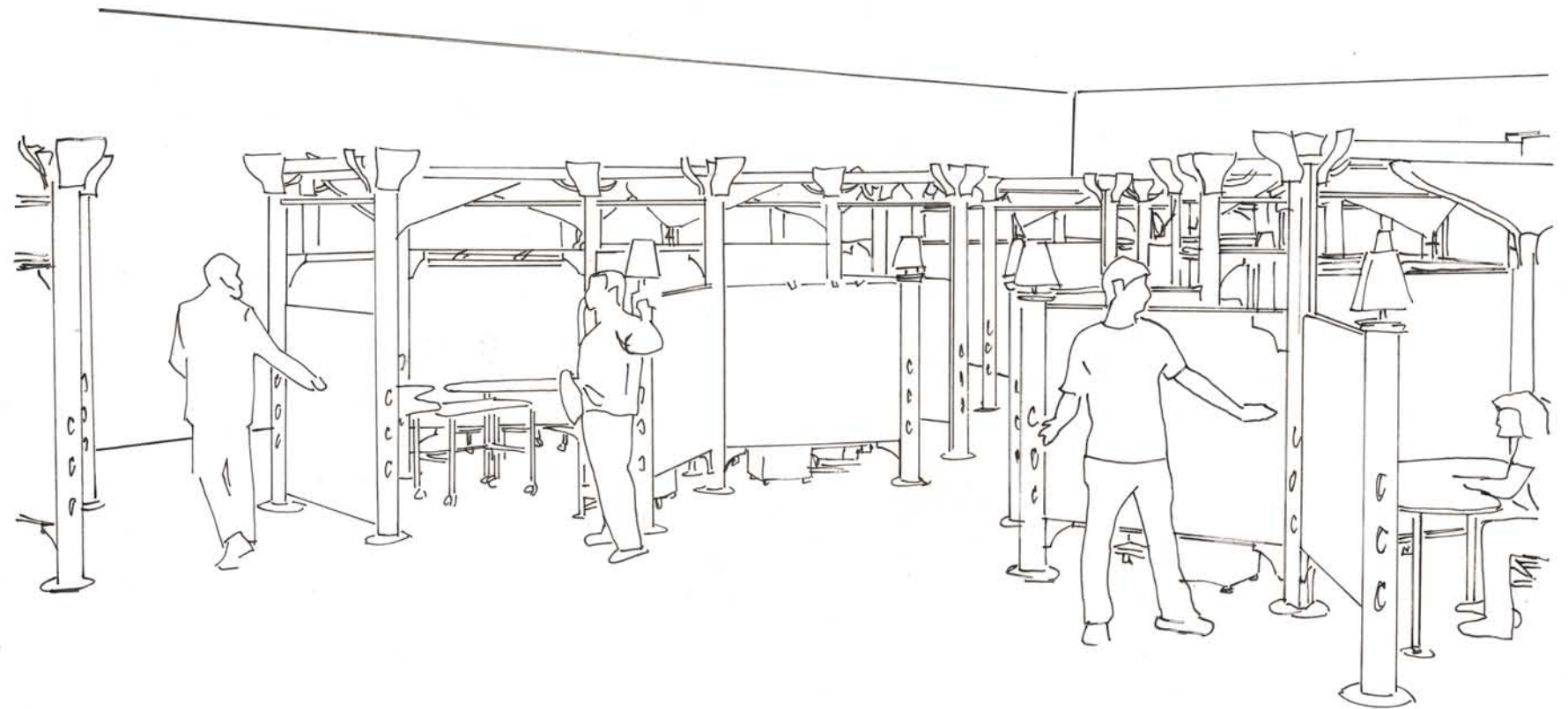
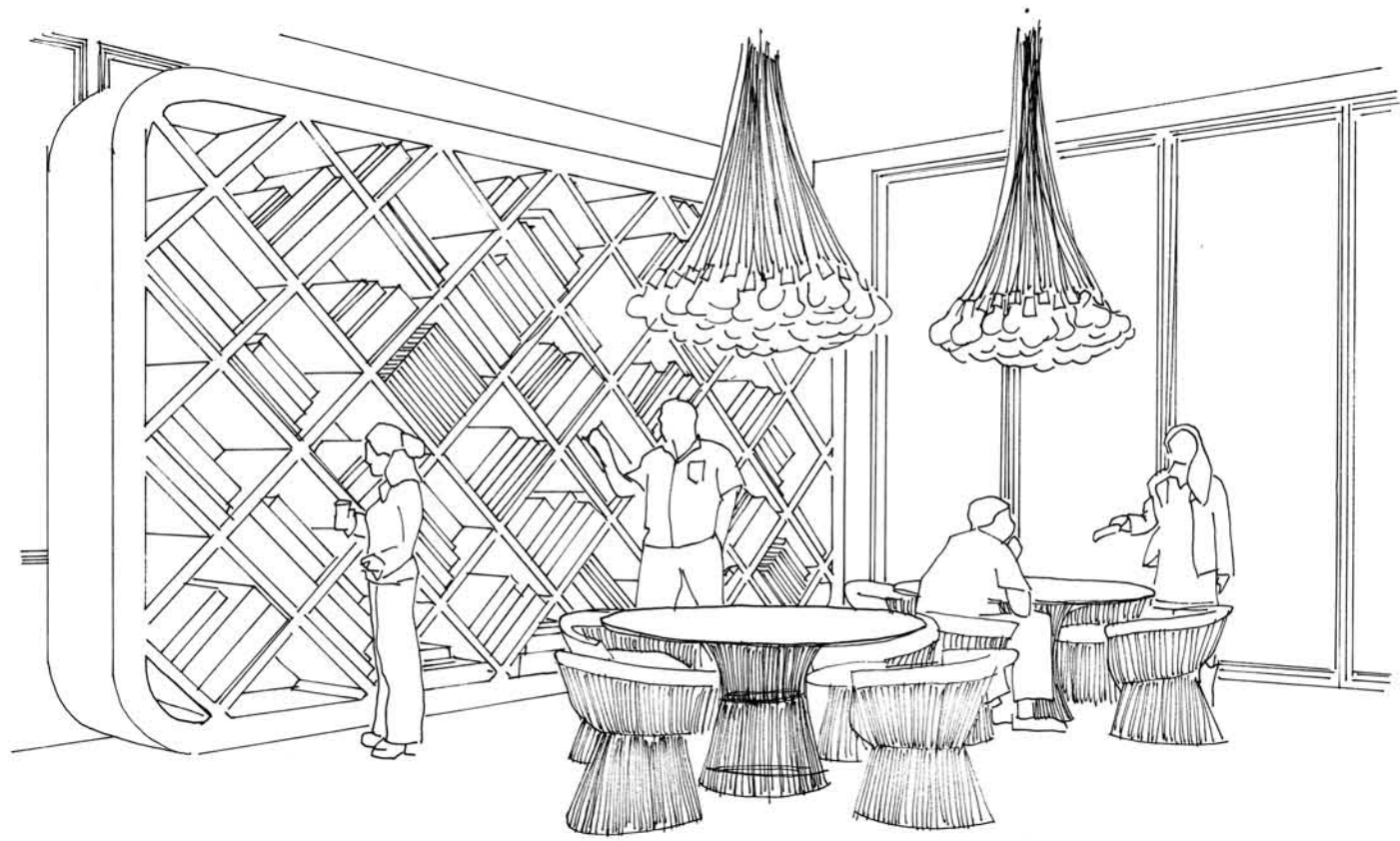
# IDEO regional headquarters



# IDEO regional headquarters



# IDEO regional headquarters



# custom pendant light fixture

ID 3751 Component Construction Project, Senior Year

# custom pendant light fixture

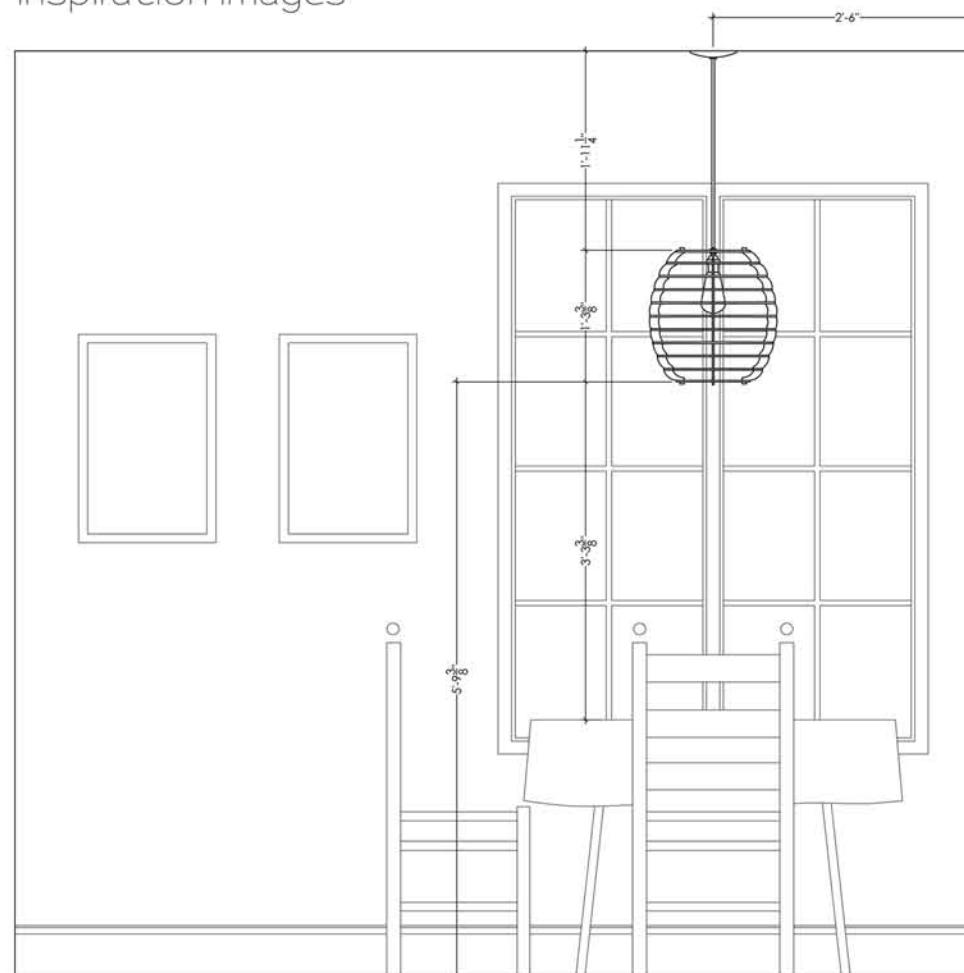
The purpose of this project was to design an appropriate custom light fixture for a specific space- from concept through actual construction of the fixture. The space is a rustic, yet charming kitchen in a rural home. The image of the space shows a small café table and chairs, perfect for sharing morning coffee and breakfast. The light fixture designed for the space is a pendant to provide ambient lighting above the table, as well as visual interest within kitchen. The piece evolved from the notion of a honey bee- compelling the fixture to take on the structure of the bee hive and ultimately translate the form of a honey stirrer. Throughout the course of the project, the creative process was thoroughly examined and the concept of taking an initial idea and converting it a feasible, built object was discovered.



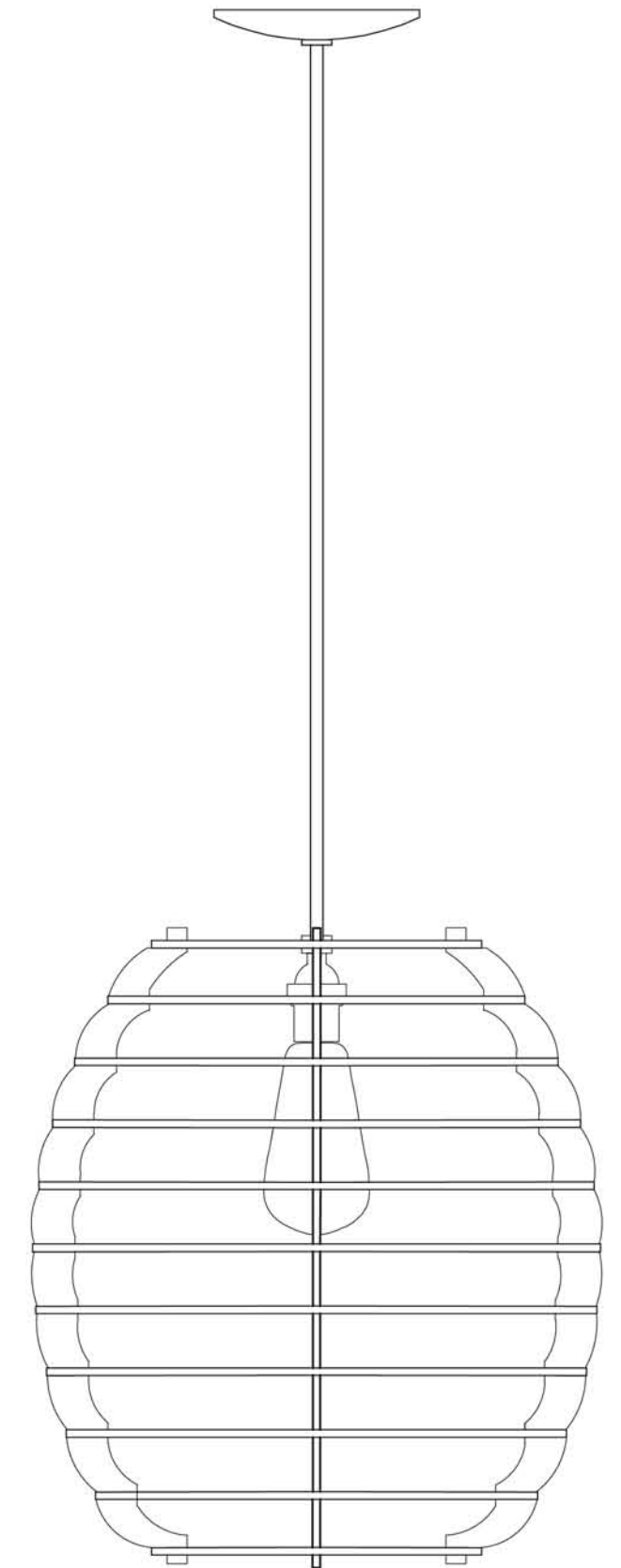
inspiration images



selected interior space

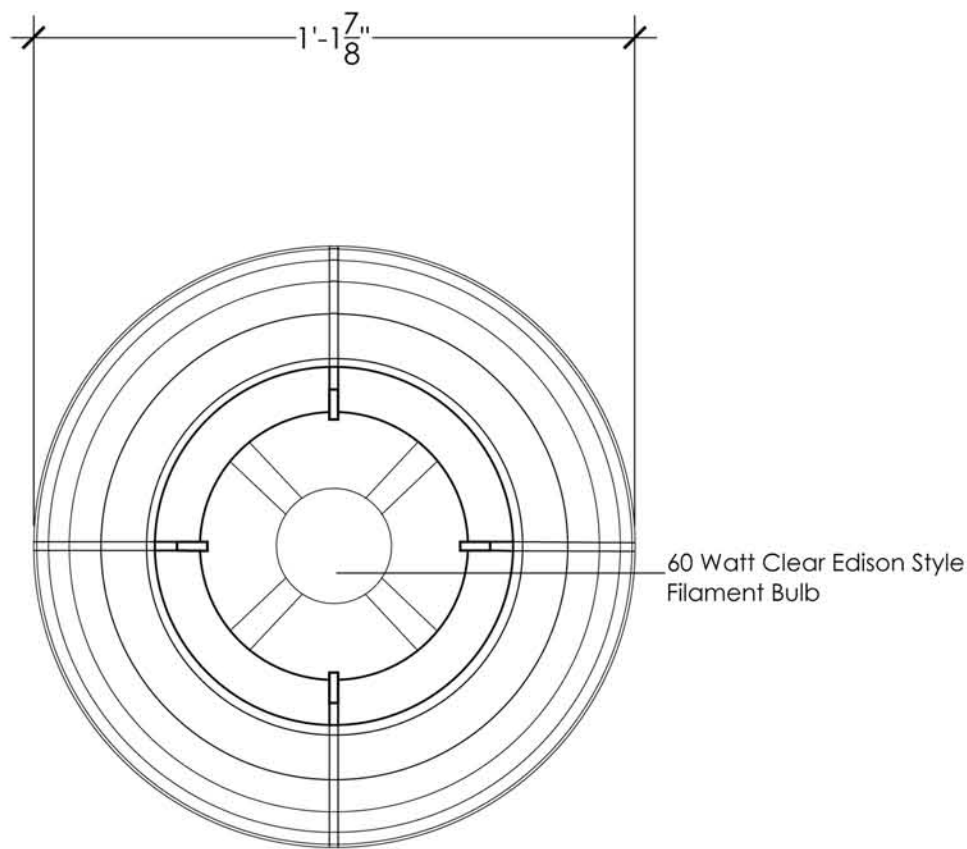


interior elevation with fixture

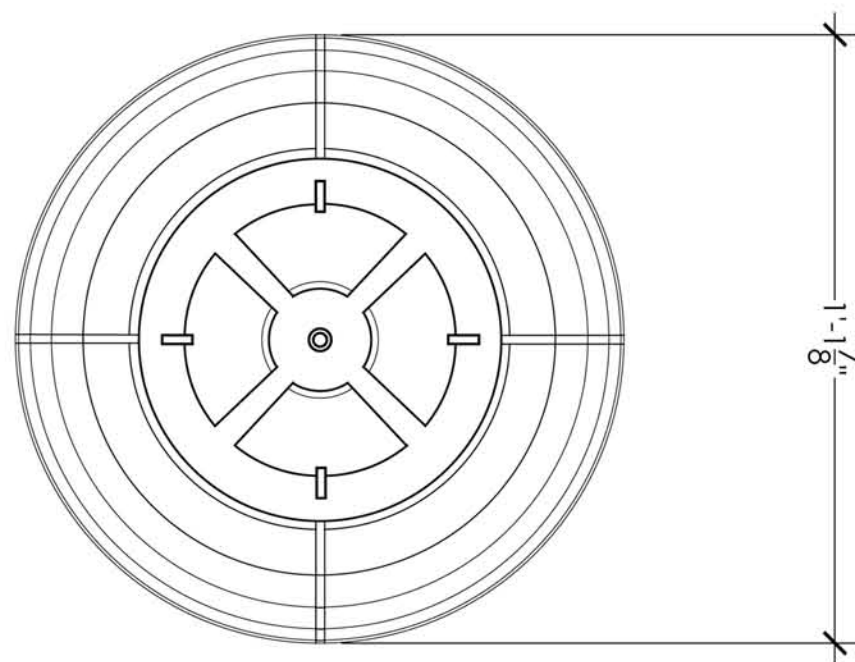


fixture elevation

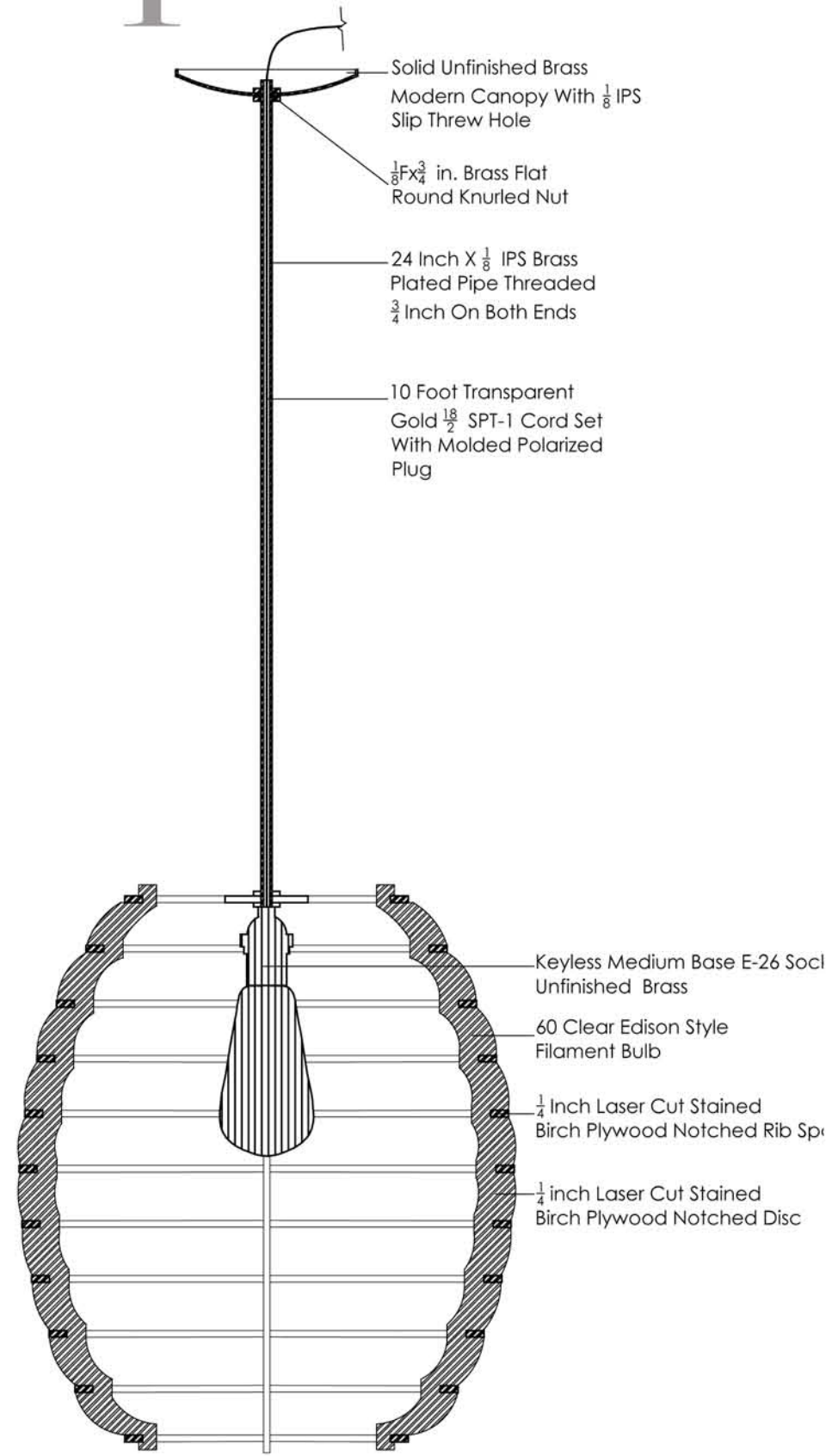
# custom pendant light fixture



bottom elevation



top elevation



vertical section



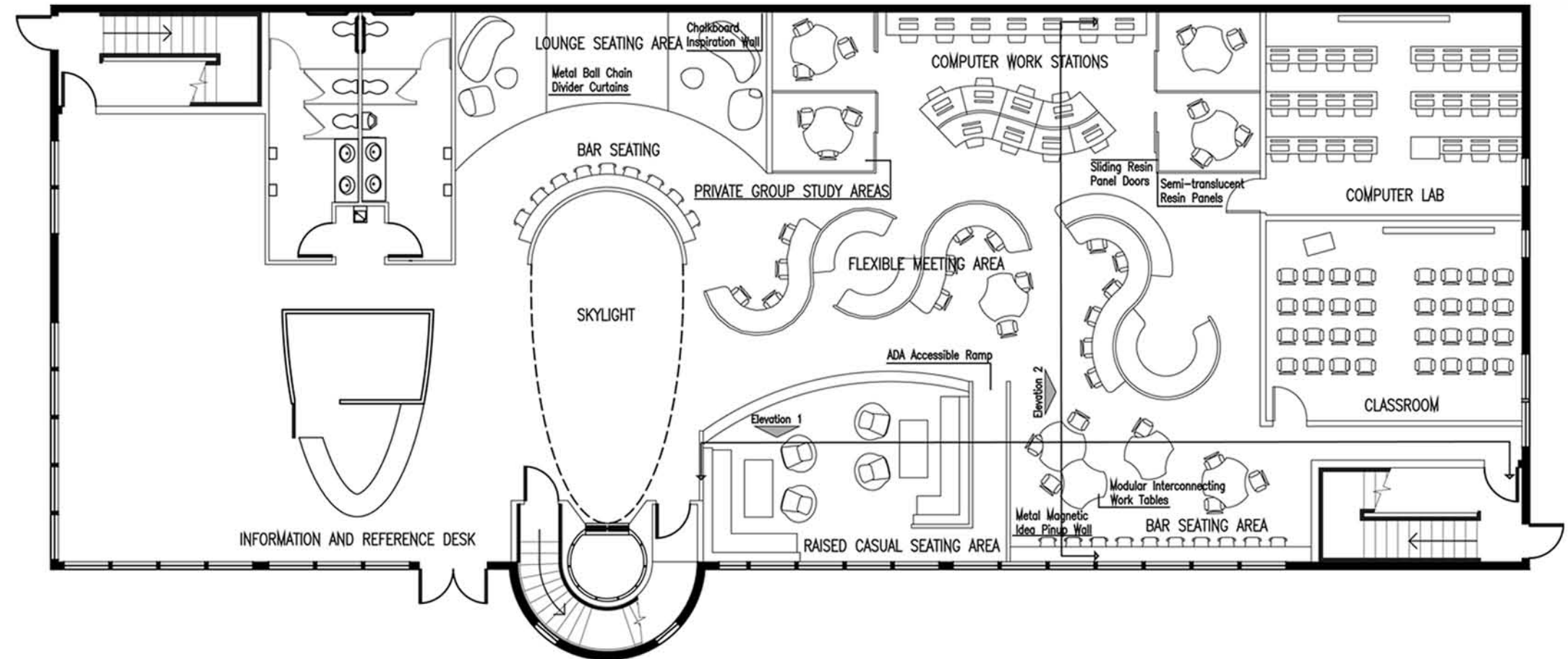
fixture prototype

# library learning commons

IDEC Student Competition, Senior Year

# library learning commons

Libraries in today's modern world are much more than merely spaces to store and preserve information. Constantly evolving technologies and lifestyles have molded today's library into a place where information is created, exchanged, and shared through numerous media forms. Students and information seekers are realizing that they can utilize one another as information sources, just as effectively as material resources. The concept for this space emphasizes this idea- that people are our greatest resource. By encouraging interaction, collaboration, and exchange among users in the space, students can utilize the knowledge of others and collectively grow with each other. Compelling surfaces and materials encourage interaction. Curved, strategic circulation patterns stimulate travel within the space, thus likening the number of encounters among users. Modular and configurable furniture allow students to manipulate seating arrangements for group discussions and meetings. All of these characteristics of the space compel users to utilize one another in seeking information and growing together intellectual



# library learning commons



# the repose boutique hotel

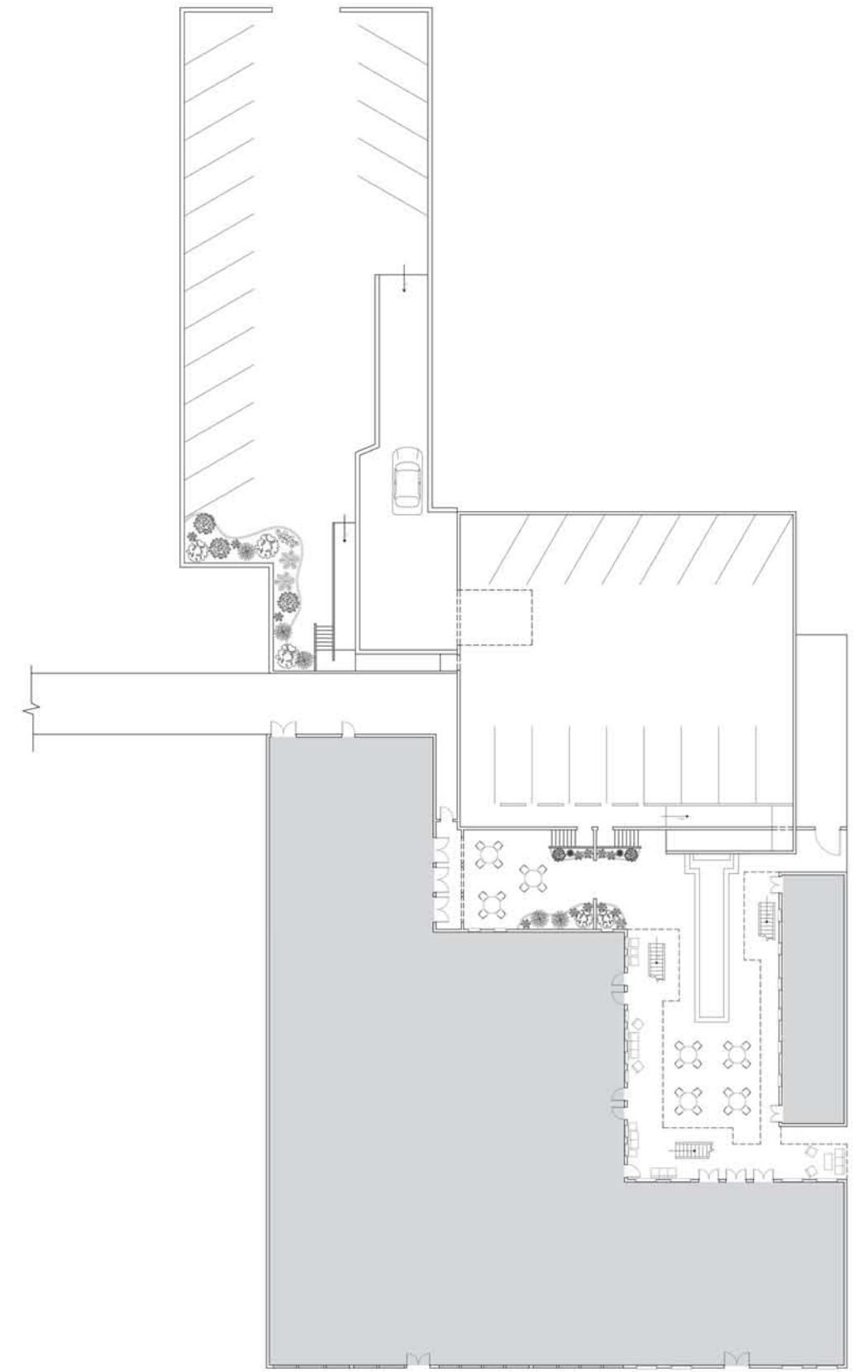
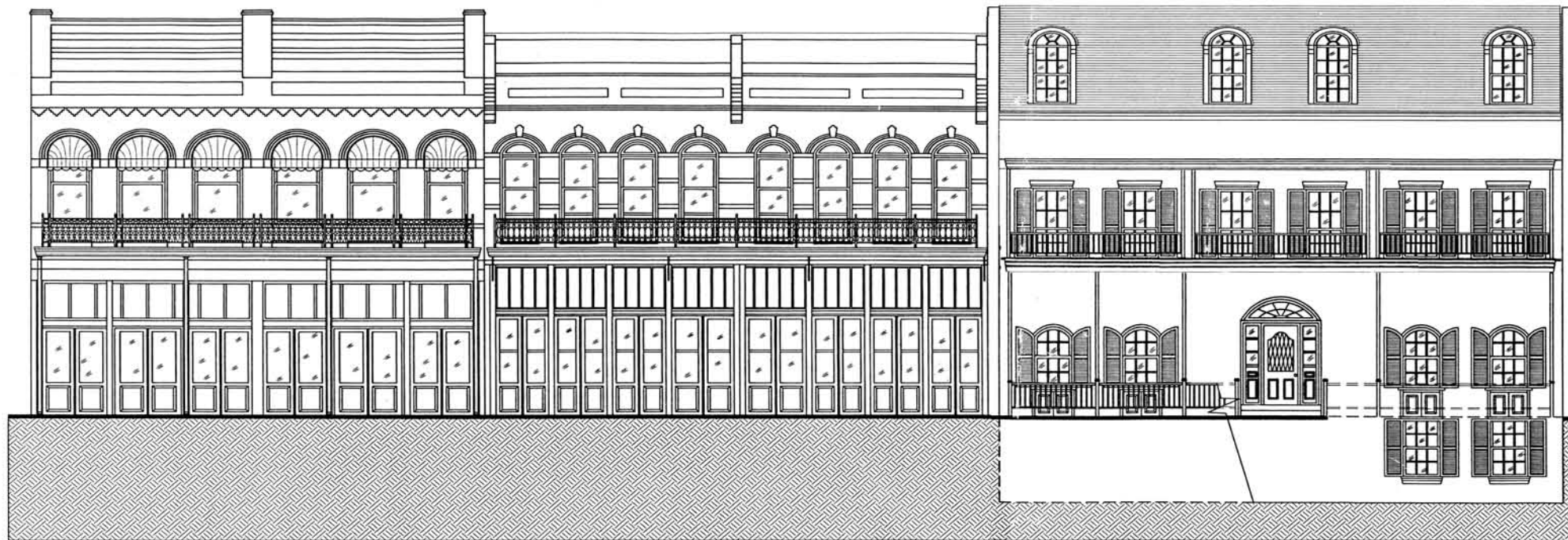
ID 4755 Capstone Project, Senior Year

# the repose boutique hotel

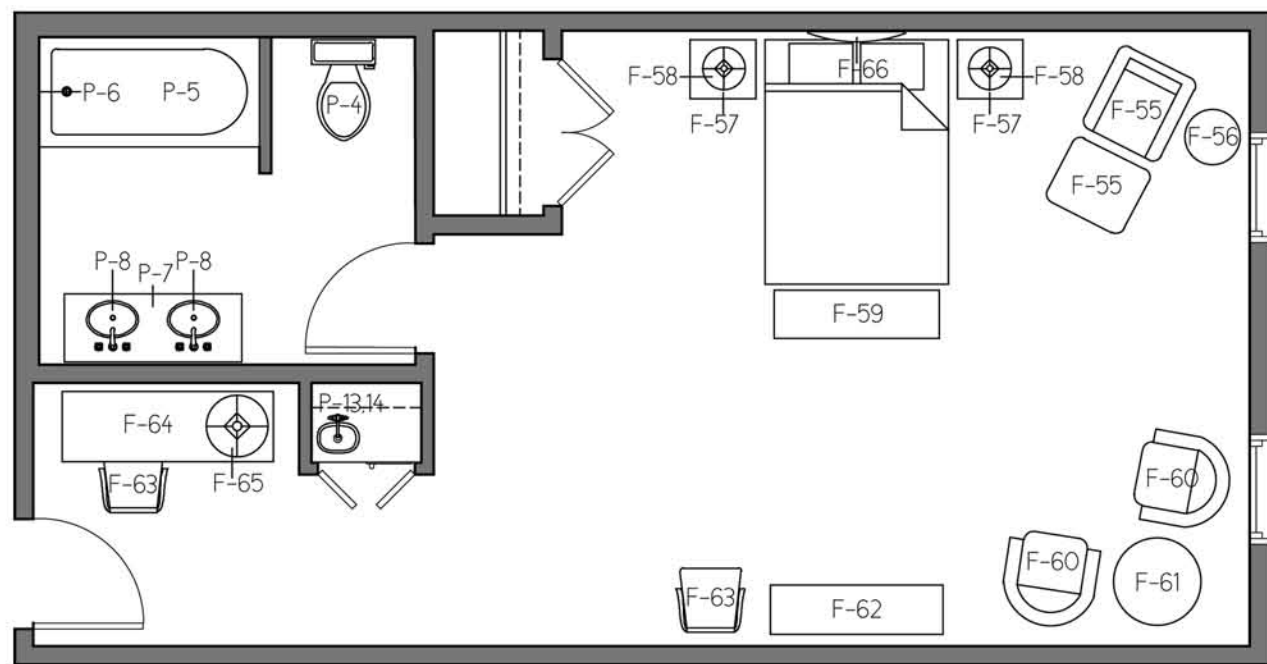
## the REPOSE boutique hotel

The Senior Capstone Project was a yearlong exploration of a comprehensive design solution for a project of one's own choosing. Research and Programming were first conducted to investigate the space's primary needs, uses, and functions. This project explores the design of a boutique hotel in a historic downtown space in Natchez, Mississippi. Space Planning, Construction Documents, and Furniture & Finish Selections were followed in the second half of the year, thoroughly completing the design process. Specific design aspects investigated included cooperating with historical preservation requirements, construction detailing, and furniture and equipment specifications. Key learning objectives included time managements and prioritizing tasks. The Repose is an upscale boutique hotel located in the heart of Natchez,

Mississippi. Situated on the bluffs of the Mississippi River, this quaint town is certainly one of many complexities, saturated with a perfect blend of past and present. A picturesque setting of antebellum architecture and southern charm seems to transport guests back in time to the area's pre-war opulence and grandeur. However, after closer observation, it becomes clear that this city is much more than a living relic of the past. A flamboyant culture and a contagious lust for life permeate all aspects of daily life and community in Natchez. This multifaceted personality of contradictions somehow blends into an offbeat harmony that defines the city's unmistakable charm. The concept for The Repose embodies this character, conveying to guests through its design and décor the rich history and spirit of Natchez. By gracefully combining historical inspiration with fresh, contemporary design, The Repose exudes a certain bewitching charm, providing guests with the best of both modern and other not-so-forgotten times.

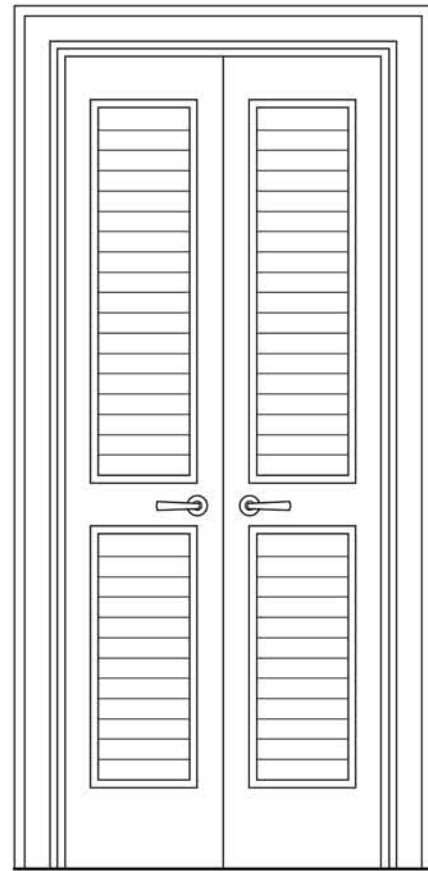


# the repose boutique hotel

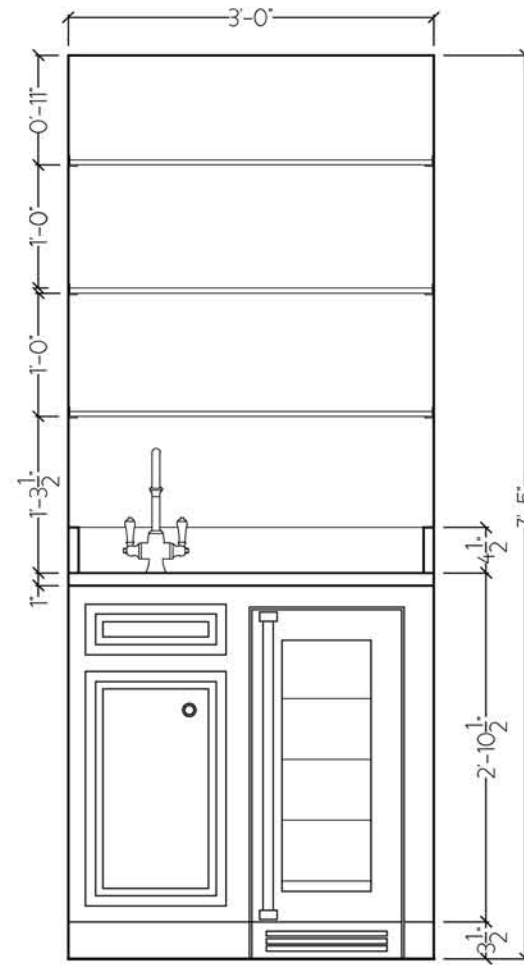


1 Furniture, Fixture & Equipment Plan  
Scale: 3/8"=1'-0"

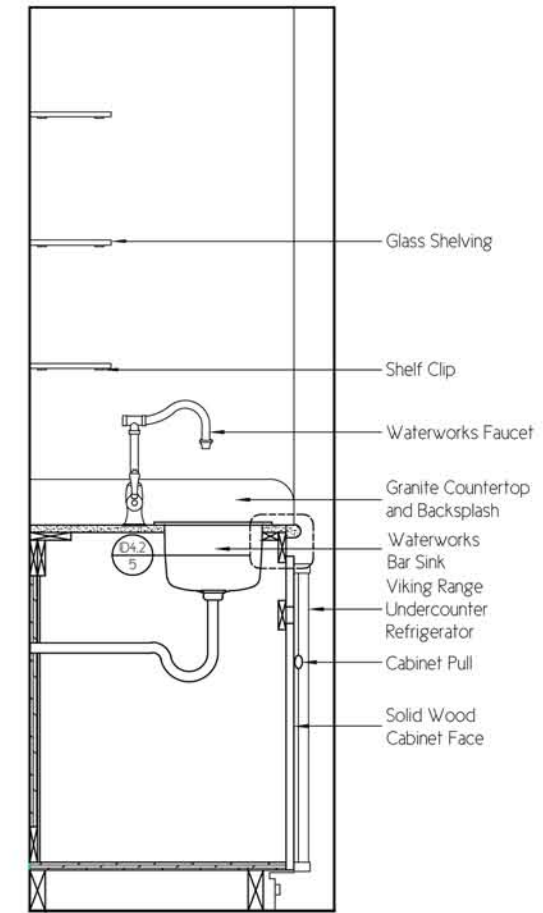
# the repose boutique hotel



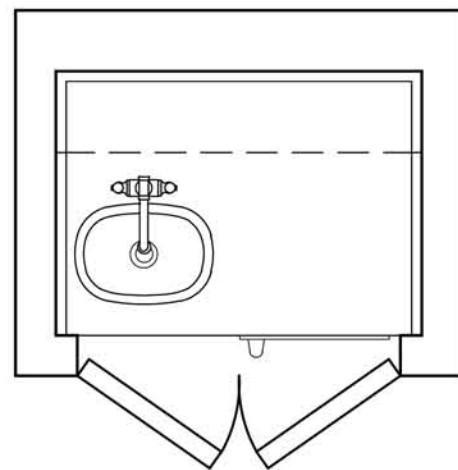
1 Front Elevation- Closed  
Scale: 1-1/2"=1'-0"



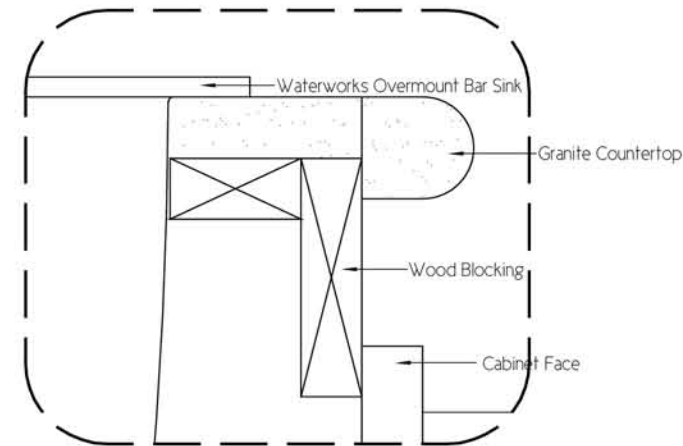
2 Front Elevation-Open  
Scale: 1-1/2"=1'-0"



3 Side Section  
Scale: 1-1/2"=1'-0"

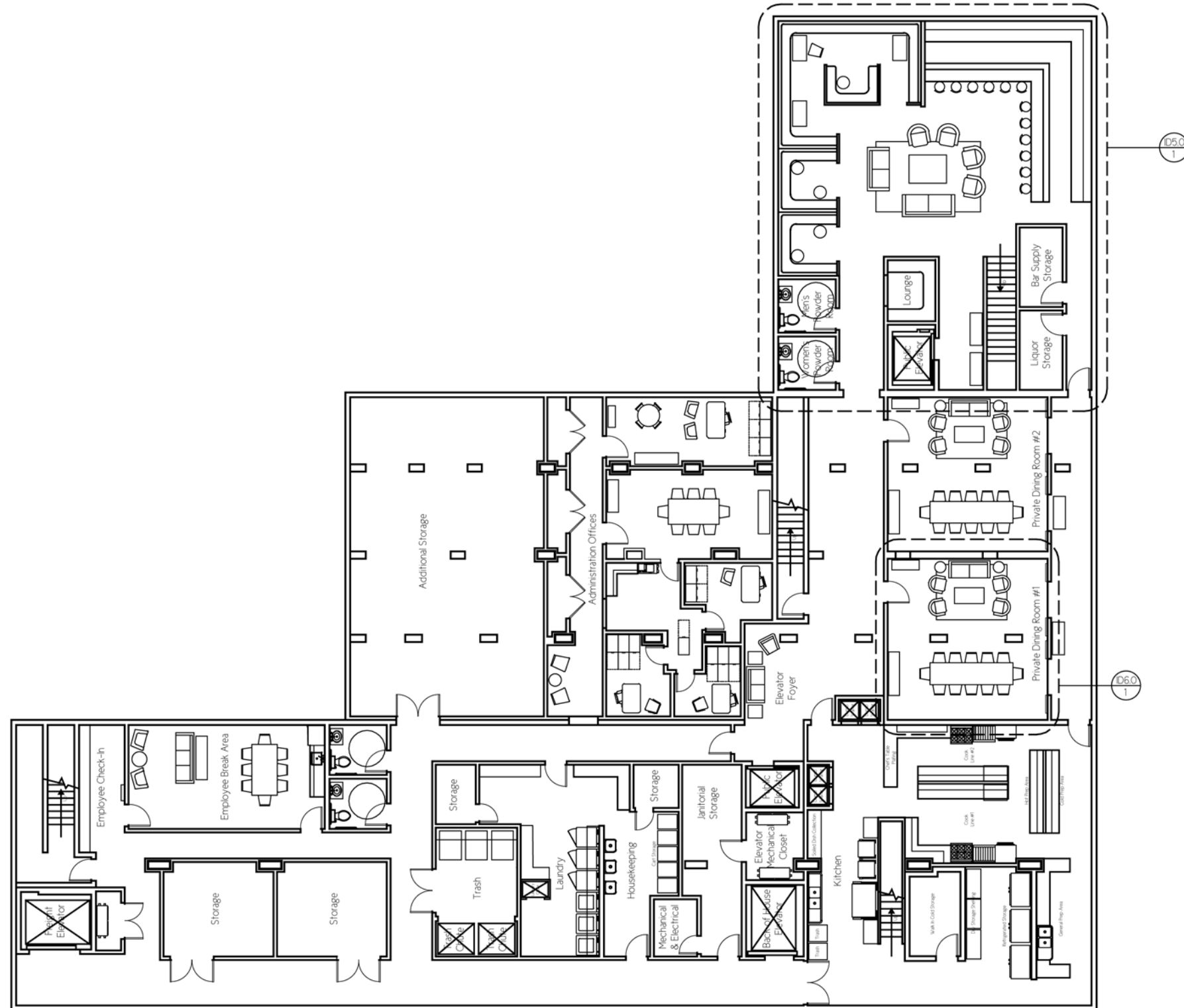


4 Wet Bar Plan  
Scale: 1-1/2"=1'-0"



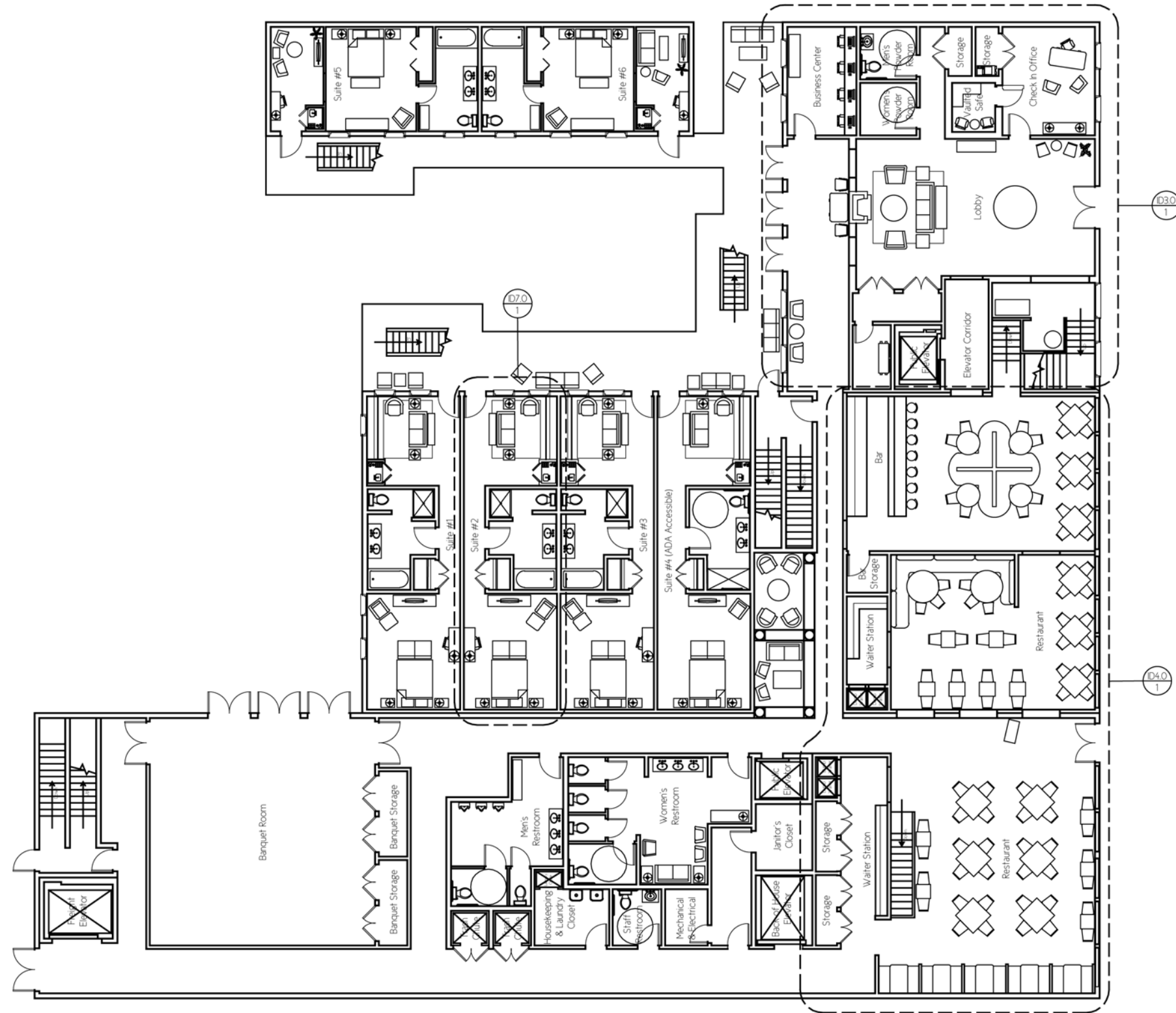
5 Cabinet Detail  
Scale: Full Scale

# the repose boutique hotel



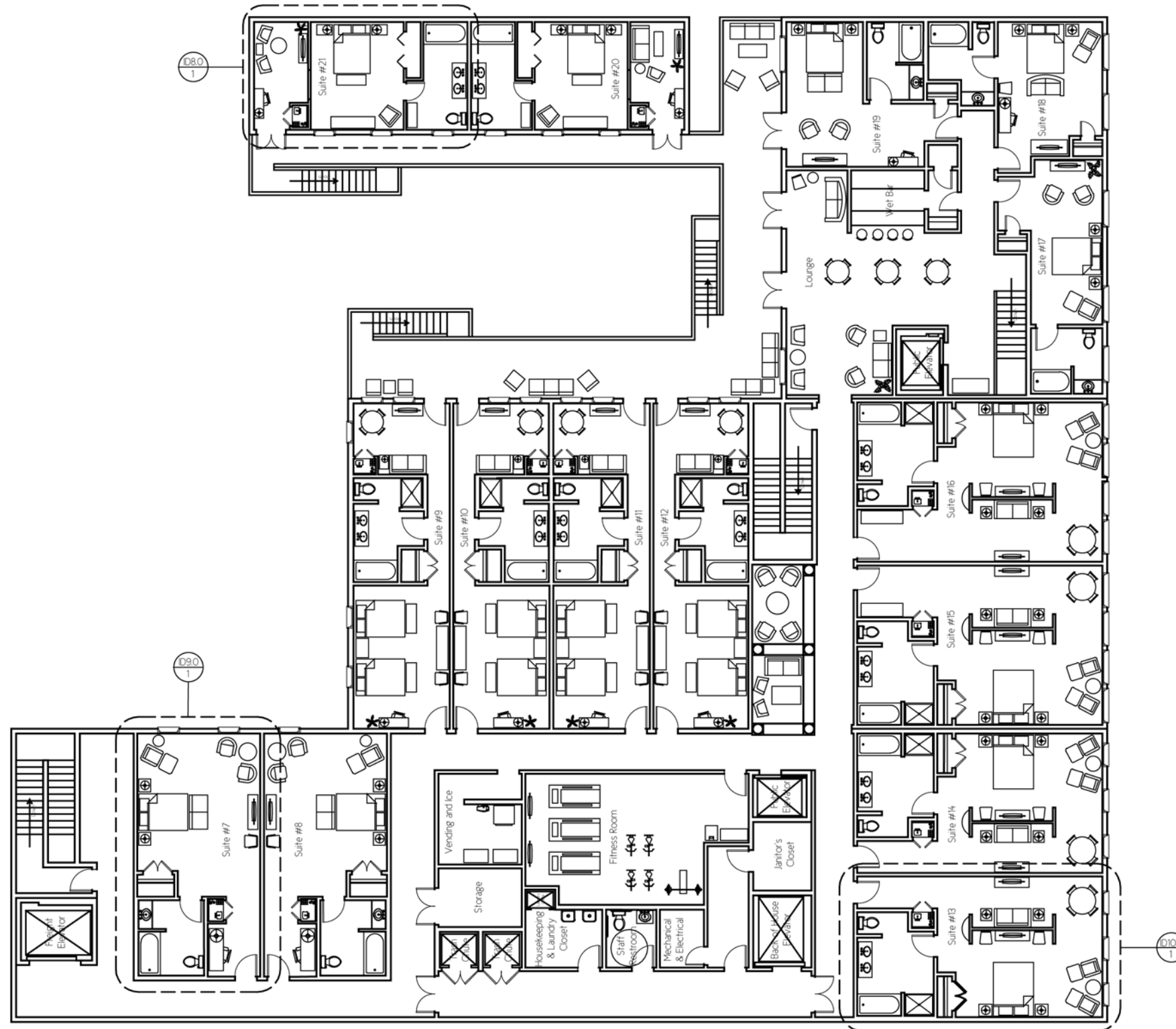
1 Basement Reference Floor Plan  
Scale: 1/8"=1'-0"

# the repose boutique hotel



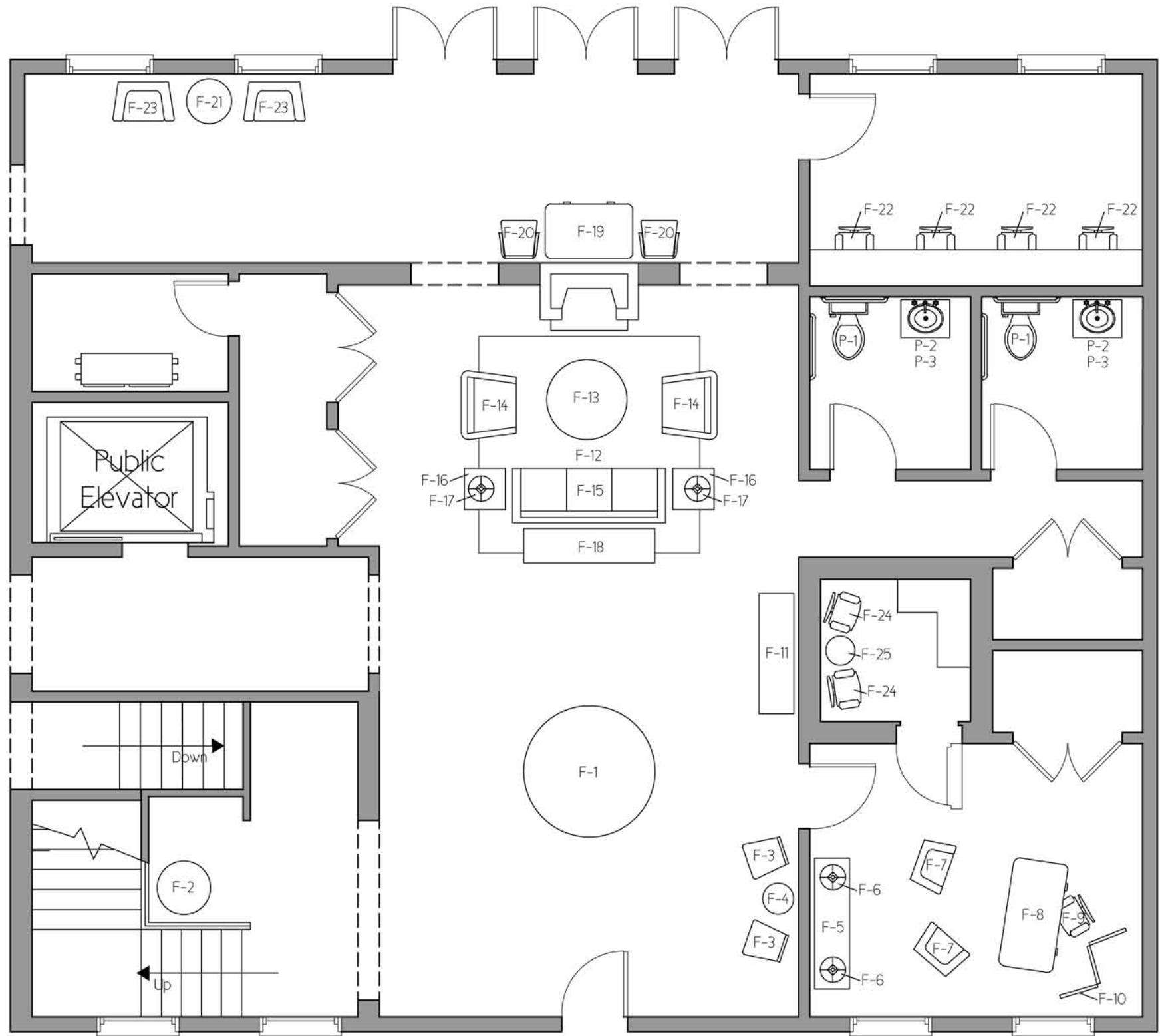
1 First Floor Reference Floor Plan  
Scale: 1/8"=1'-0"

# the repose boutique hotel



1 Second Floor Reference Floor Plan  
Scale: 1/8"=1'-0"

# the repose boutique hotel



1 Furniture, Fixture & Equipment Plan  
Scale: 3/8"=1'-0"

# the repose boutique hotel



The Concierge's Office is one of the defining elements of The Repose, emphasizing the hotel's attention to detail and luxury. In most hotel experiences, guests check in to their room at a rather uninspiring counter in the main lobby, proceeding through formalities in a routine and stoic manner. The Concierge's Office in The Repose aims to transform that process of check-in into a much more personal and memorable experience for guests. Upon entering the lobby for check in, guest would proceed to the private concierge's office. A beverage service and accommodating seating greet weary travelers, as the hotel employee manages their check in. A vaulted safe, located in the office, allows guests to privately access deposit boxes and stow valuables with the concierge. The "lived in" atmosphere of the décor and comfortable furniture layout makes arriving more reminiscent of arriving at the home of a dear friend, rather than a unfamiliar hotel.



# the repose boutique hotel





# the repose boutique hotel

