

NUMARI

Pattern & Sample Making Test - Dress 1

NUMARI 1st Pattern & Sample Test Dress 1

Original Dress by LUSH

Size: L

Ponte di Roma KNIT

78% Poly

18% Rayon

4% Spandex

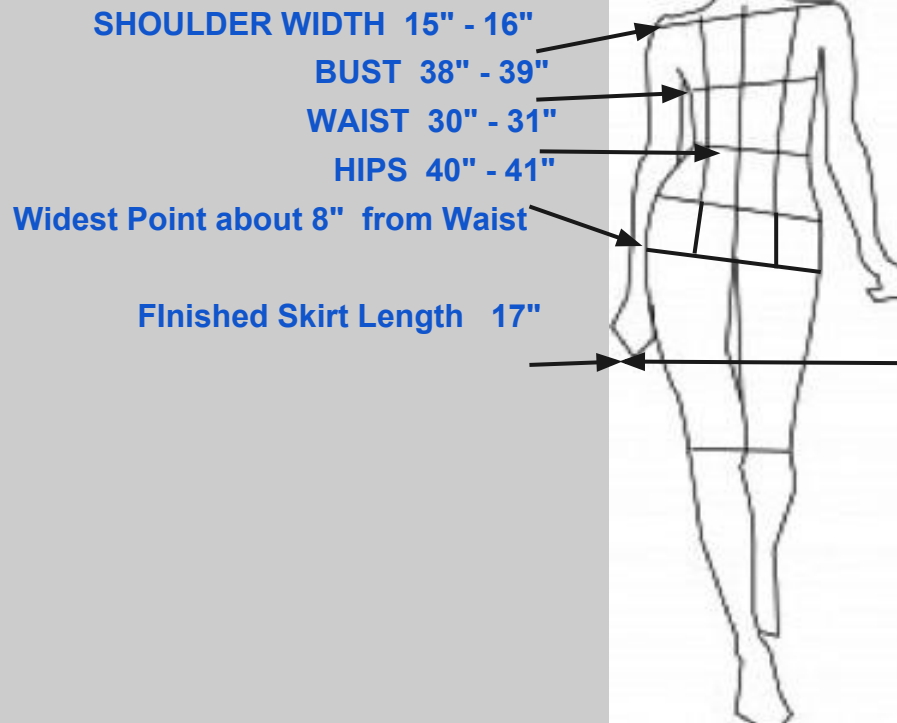
DRY CLEAN ONLY



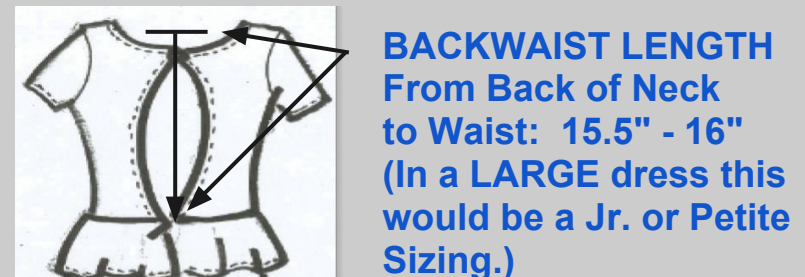
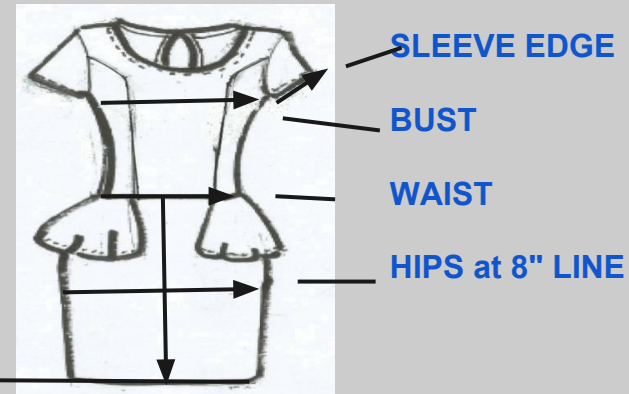
NUMARI Knit Peplum Dress SAMPLE SIZING

"LUSH" Original Sample Size: **Large** (Jr Size 11-13 w Shorter Backwaist)

BODY MEASUREMENTS



FINISHED DRESS MEASUREMENTS



NUMARI Test Dress 1 Original DESIGN SPECS

NECK EDGE & BACK OPENING - Faced w 5/16" Knit Binding & Double Top Stitched

**SLEEVE EDGES
& HEM -**
Cover Stched

**PRINCESS
SEAMS** in
FRONT ONLY

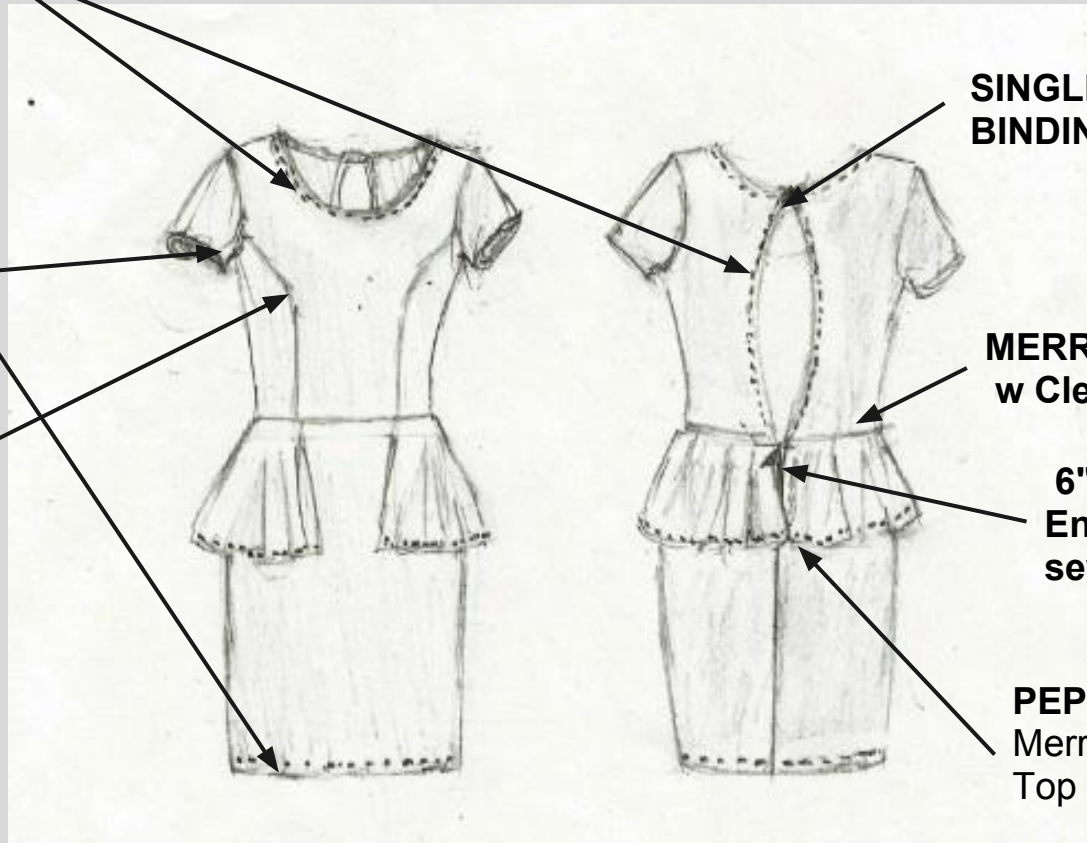
**MERROWED
SEAMS**

**SINGLE BUTTON w
BINDING LOOP**

**MERROWED WAIST SEAM
w Clear Elastic Stay**

6" INVISIBLE BACK ZIP
Entire Peplum Edge is
sewn into the seam

PEPLUM HEM
Merrow Turn & Single
Top Stitch



NUMARI

Test Dress 1

Approved Changes

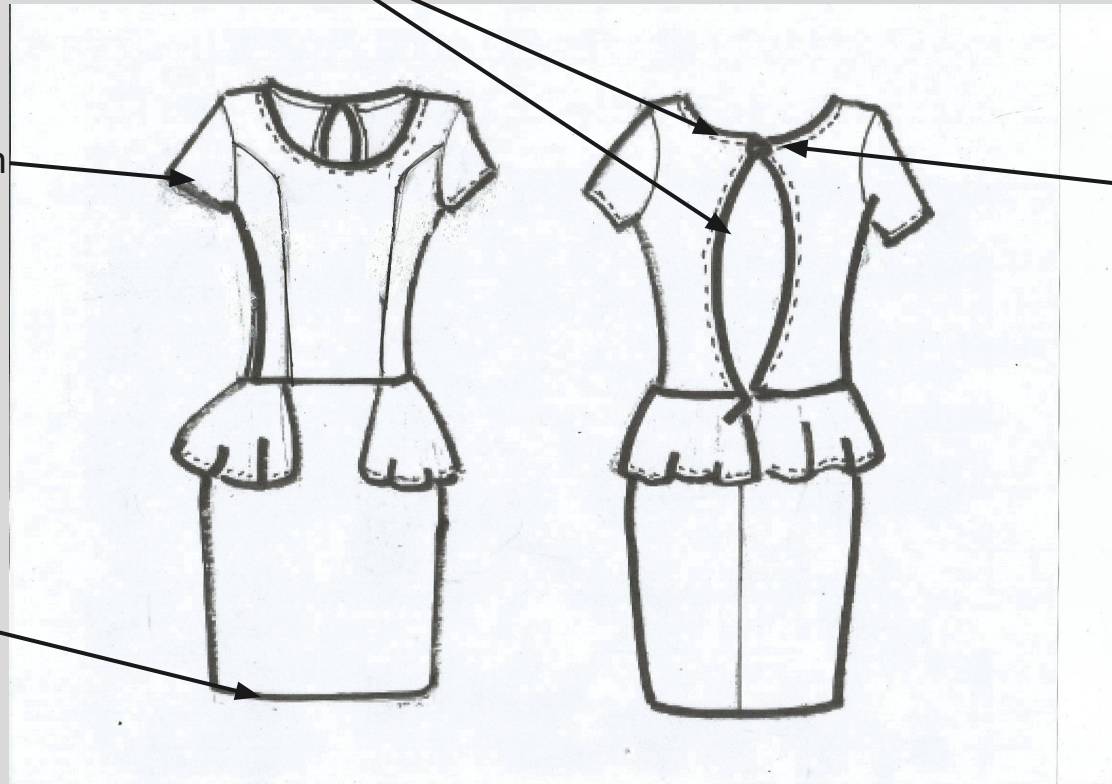
NECK & BACK OPENING EDGES - Same fabric facing w elastic, turn & top stiched

SLEEVE EDGES

Merrow & Top Stitch

ALTERNATIVE
MATERIAL for
Button Loop
TBD

HEM - 1" Invisible



NUMARI Test Dress 1 Original Garment STYLING SPECS

ORIGINAL
GARMENT
SIZE: L

*Set In CAP style
Sleeve 7/8" Curve
Shaping in Front

* Peplum Folds
Under 1"

* LONGER Front
6" in front

SKIRT LENGTH 17"

Scoop Neck
10" Wide

Sleeve Length 6.5" top

1" under
arm length

Max Width of Back
Opening 1.75"
from 5" to 7" up from
Waist

5.75" Peplum
Length

Skirt Tapers 1.5"
From Hip to Hem

* Skirt Width at Hem
16.5"

