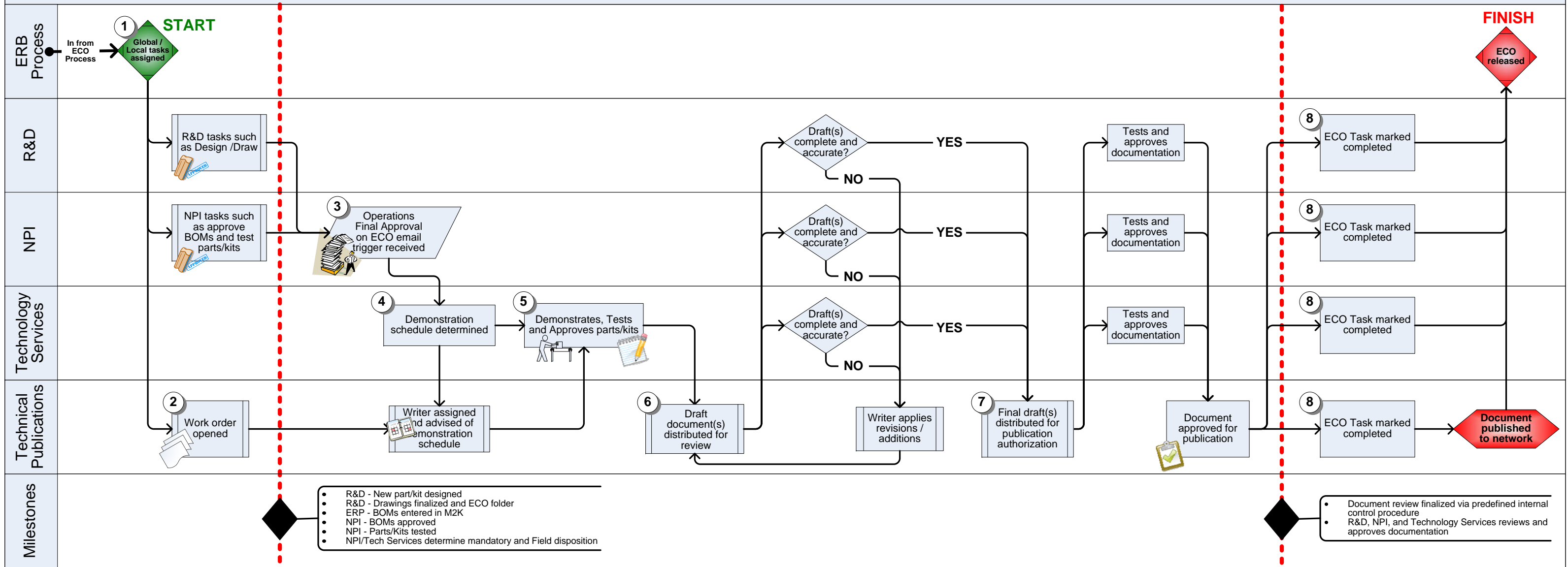


# Local ERB Documentation Workflow



**1** See also: Technical Publications *ECO Trigger* process flow chart

**2** See also: Technical Publications *Forecast Work Order* process flow chart

Other documentation processes *not* identified/ applicable here:

- Manufacturing Instructions
- West Virginia Gaming Guide
- Compliance Technical Bulletins

**3** Auto-generated email from Manage 2000 system indicates date, ECO number, and name of approver.

Approver name used as key contact/SME for demonstrations and content creation/verification

**4** Schedule formally calendared in Outlook.

- Hardware, peripherals, and tools confirmed prior to demonstration sessions
- Applicable 3D, line drawings, and wiring schematics confirmed and finalized prior to demonstration sessions

**5** Demonstration session recommendations:

- Cabinet reflects configuration that will be encountered in the Field
- All applicable subassemblies and assemblies match condition and Field performance expectations
- Applicable tools match Field tool kits and performance expectations

**6** First Draft(s) distributed to Technician that demonstrated the procedure(s)

**7** Final draft(s) distributed R&D representative, NPI manager, and to Regional Field Managers for review and approval

**8** **Note:** approval and publication of documentation is only a **subset** of any/all tasks that might be required of each discrete department