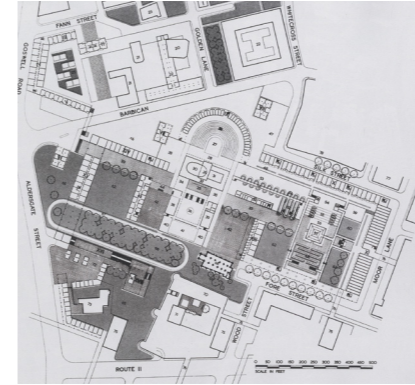


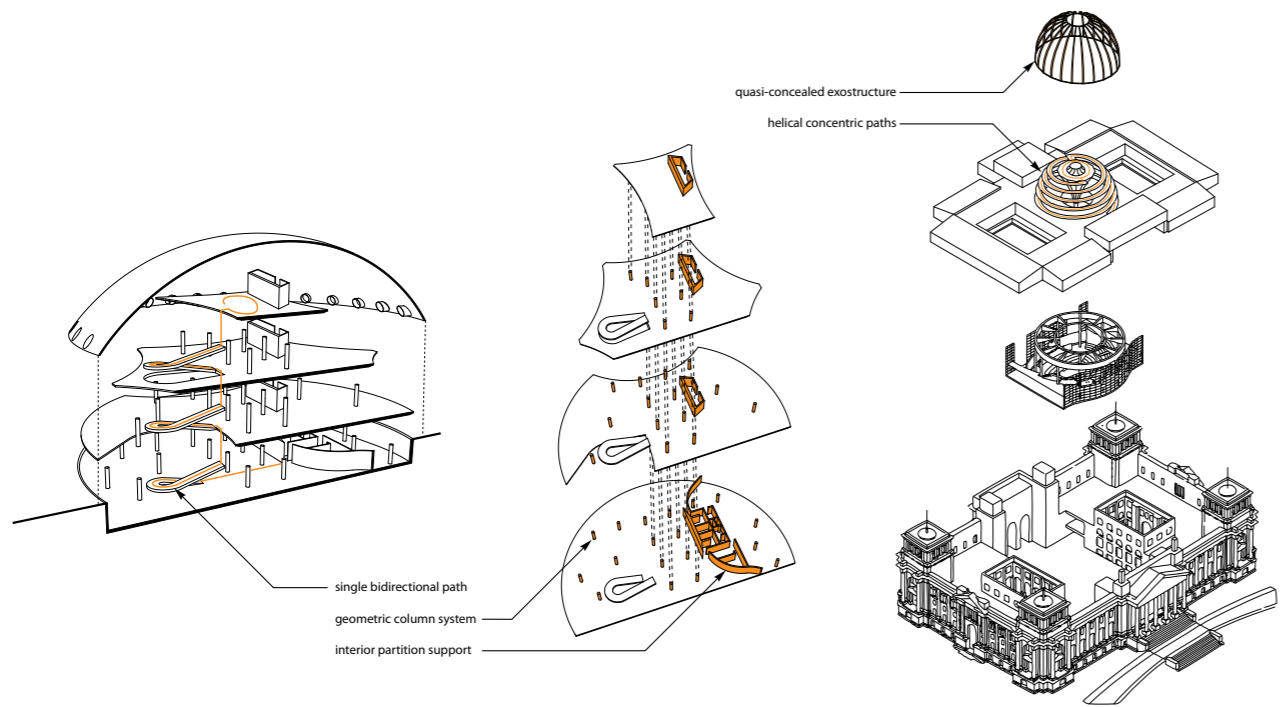
Sections of the Oca and the Reichstag reveal the contrasting qualities of the two spaces.



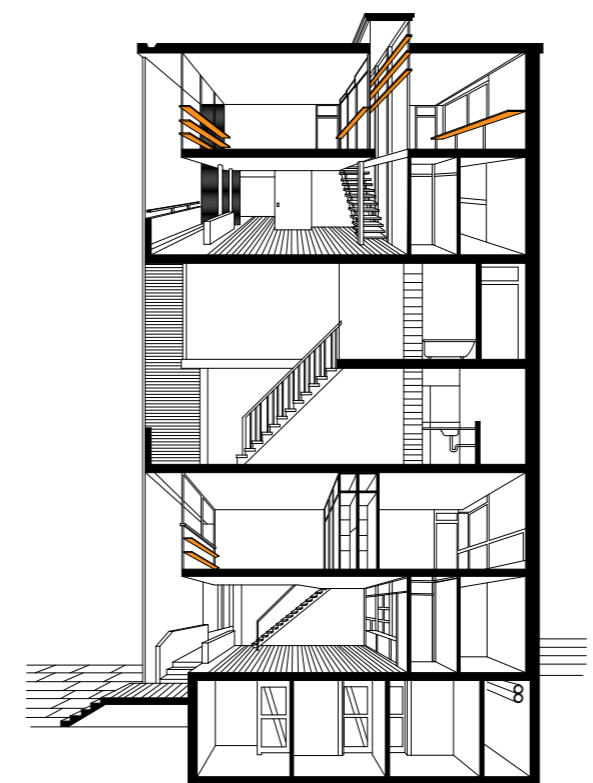
The architects of Barbican focused a great deal of attention to a person's movement through the site, and were very preoccupied with the notion of framing views throughout the procession.

The circulation of Barbican is very important to its design, and pathways and stairs continually move one across and between different and often several levels.

Multi-level dwelling units produce interesting configurations of individual assemblages as well as overall arrangement, and allow for opportunities of optimizing the light and maximizing exposure. Light shelves are often used to increase diffuse light in central areas.



Circulation and structure comparison.



Studies of the Barbican Estate, London

