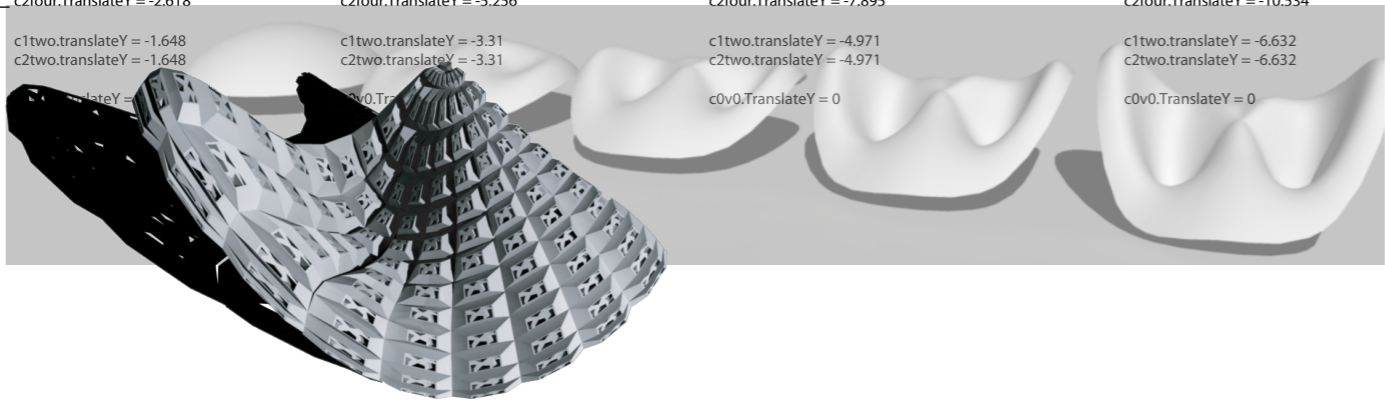
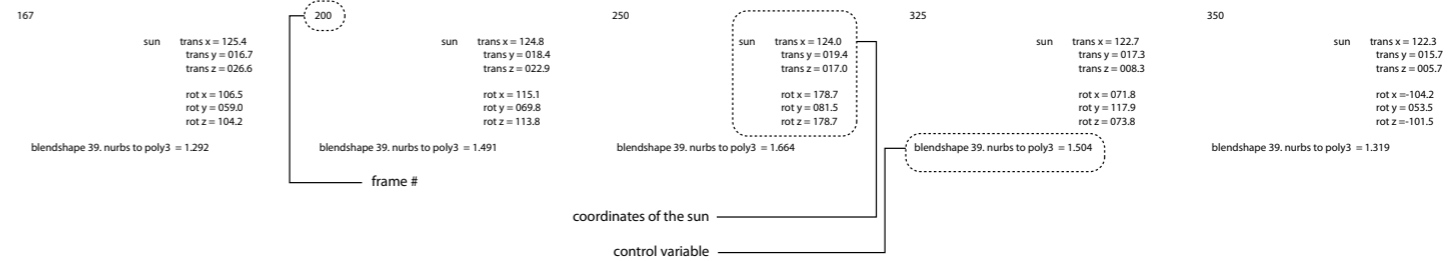
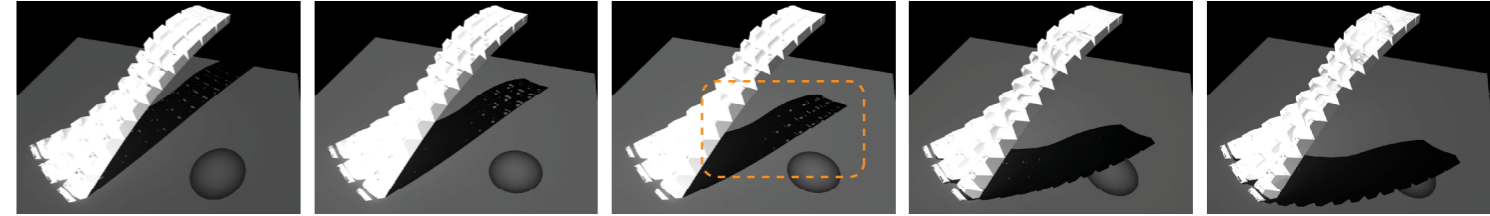


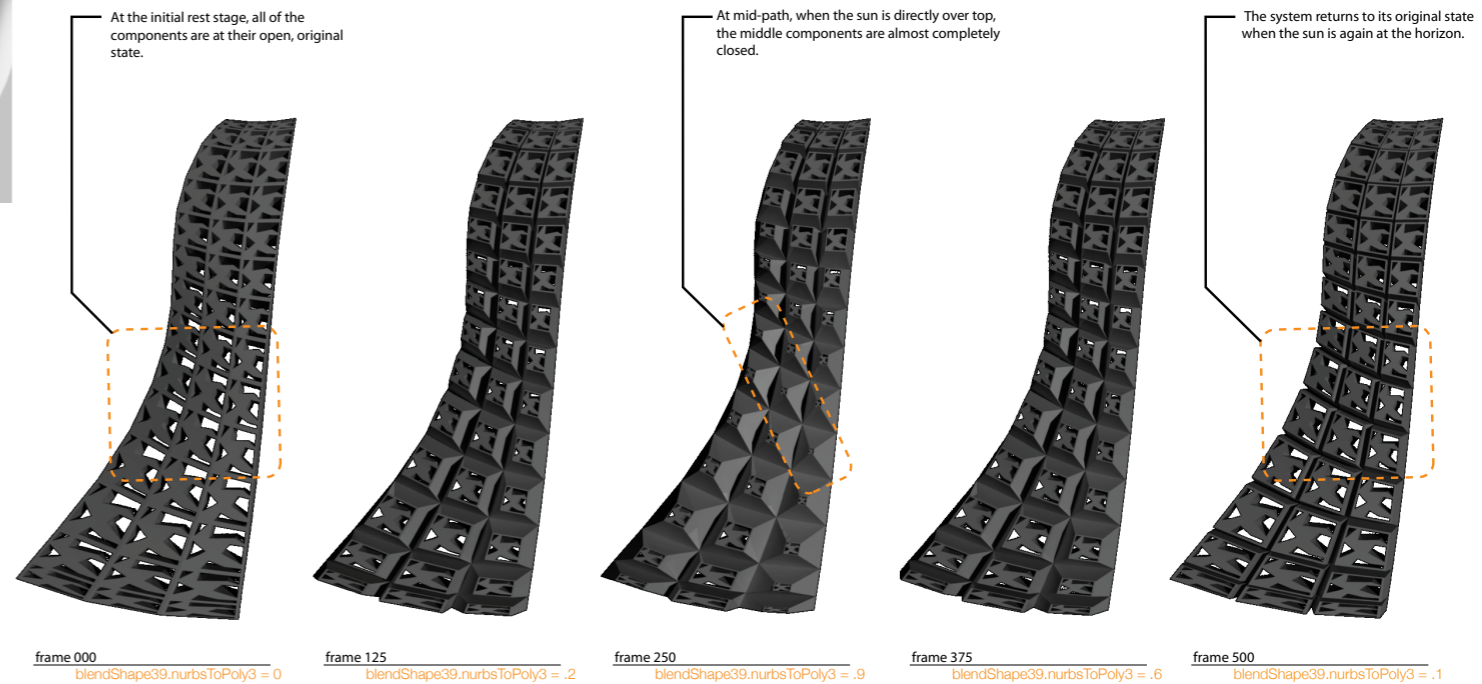
125	250	375	500
trans x = 64.609	trans x = 129.739	trans x = 194.87	trans x = 260
c1twelve.translateY = 8.836 c2twelve.translateY = -5.103	c1twelve.translateY = 17.744 c2twelve.translateY = -10.246	c1twelve.translateY = 26.651 c2twelve.translateY = -15.39	c1twelve.translateY = 35.559 c2twelve.translateY = -20.534
c1ten.TranslateY = 2.65 c2ten.TranslateY = 2.65	c1ten.TranslateY = 5.322 c2ten.TranslateY = 5.322	c1ten.TranslateY = 7.993 c2ten.TranslateY = 7.993	c1ten.TranslateY = 10.665 c2ten.TranslateY = 10.665
c1nine.TranslateY = 0 c2nine.TranslateY = 0	c1nine.TranslateY = 0 c2nine.TranslateY = 0	c1nine.TranslateY = 0 c2nine.TranslateY = 0	c1nine.TranslateY = 0 c2nine.TranslateY = 0
c1eight.TranslateY = 1.711 c2eight.TranslateY = 1.711	c1eight.TranslateY = 3.437 c2eight.TranslateY = 3.437	c1eight.TranslateY = 5.162 c2eight.TranslateY = 5.162	c1eight.TranslateY = 6.887 c2eight.TranslateY = 6.887
c1six.TranslateY = 8.836 c2six.TranslateY = -5.103	c1six.TranslateY = 17.744 c2six.TranslateY = -10.246	c1six.TranslateY = 26.651 c2six.TranslateY = -15.39	c1six.TranslateY = 35.559 c2six.TranslateY = -20.534
c1four.TranslateY = -2.618 c2four.TranslateY = -2.618	c1four.TranslateY = -5.256 c2four.TranslateY = -5.256	c1four.TranslateY = -7.895 c2four.TranslateY = -7.895	c1four.TranslateY = -10.534 c2four.TranslateY = -10.534
c1two.translateY = -1.648 c2two.translateY = -1.648	c1two.translateY = -3.31 c2two.translateY = -3.31	c1two.translateY = -4.971 c2two.translateY = -4.971	c1two.translateY = -6.632 c2two.translateY = -6.632
c0v0.TranslateY = 0	c0v0.TranslateY = 0	c0v0.TranslateY = 0	c0v0.TranslateY = 0



The component was further tested across a compound surface. Through a morphology of the dome form of the Oca, the correlating value adjustments were recorded at each frame and the component proliferated across the surface of the manufactured global.



Measurements recorded from the output of the system further indicate its performance. Through shadow casting, we can also measure the percentage of exposure, quality of light, and range of motion.



Frames from the animation reveal the product of the system. If one imagines the system frozen in one of these optimal configurations, the most efficient density has been established for each section of the facade.

Global Transformation

Component Proliferation