

DUMMY

A man with dark hair and a beard, wearing dark sunglasses, a blue polo shirt, and a green plaid button-down shirt. He has his arms crossed and is wearing a black watch on his left wrist. A small cross pendant is visible on a chain around his neck. The background is a blurred outdoor setting.

CHERRY'S
BONANZA

CHAITU
NEW MOVIE

SNEHA
NEW LOOK

SAMANTA
PHOTOSHOOT

Now on the the iPad.

Visit <http://www.funday.in/ipad> for more details



DUMMY

Chief Executive Officer
Chief Operating Office

Ram
Suman

Editor in Chief
Features Editor
Features Writer
Stylist & Fashion Writer

Pawan Kumar
Hemanth
Rama
Nagesh

Editorial Coordinators
Andhra Pradesh
Tamilnadu

Murali
Madhu Pillai

Contributors
Tamilnadu

Rinku
Pavitra

Design Director
Graphic Designer
Production Head

Nickson
Pradeep
Taman

Circulation Head
Deputy Manager

Raghu
Sanjay Kumar

Publication Consultant
Board of Advisors

Raju
Ramakanth

Enquiries

info@dummy.in

www.dummy.in

Subscriptions:

info@dummy.in
or sms DUMMY to 53223

Ad Sales

National Sales Head
Naresh, M: +919335562635
naresh@dummy.in

Mumbai
Sunita, M: +919335562636
sunita@dummy.in

Hyderabad
Indira, M: +919335562637
indira@dummy.in

Bengaluru
Sunny, M: +919335562638
sunny@dummy.in

Our Distributors

National Sales Head

Mahesh, H.No. 11-21-1232, ntr nagar, Saroor Nagar,
lb nagar, Hyderabad - 500 074.
mahesh@dummy.in

Mumbai:

Mahesh, H.No. 11-21-1232, ntr nagar, Saroor Nagar,
lb nagar, Hyderabad - 500 074.
mahesh@dummy.in

Mumbai:

Mahesh, H.No. 11-21-1232, ntr nagar, Saroor Nagar,
lb nagar, Hyderabad - 500 074.
mahesh@dummy.in

Mumbai:

Mahesh, H.No. 11-21-1232, ntr nagar, Saroor Nagar,
lb nagar, Hyderabad - 500 074.
mahesh@dummy.in

Edited, Printed, Published and Owned by Dummy Services Printed at Kalajyothi Process Pvt. Ltd. 1-1-60/5,
RTC X Road, Hyderabad - 500 020. Published from 202, Shiva Sai Sannidhi, Dwarakapuri Colony, Punjagutta,
Hyderabad - 500 082. AP. Tel: +91 40 3060523523 / 3524





Cherry's BONANZA

CONTENT

REGULARS

News	10
Politics	20
Box Office	25

OTHERS

News	10
Updates	20
Box Office	25
News	10
Updates	20
Box Office	25
News	10
Updates	20



Chaitu
New
movie

20

Sneha

in new look



25

NIKE HAS GREAT ADS



LOVE COMPETITION

CONTENT

Samantha
photoshoot



25



27

Deeksha
cute look



29

Puppy's
world



The House

*T*his file contains last-minute product information and troubleshooting tips. Please refer to the User Guide or the HowToInstall document for installation instructions. For further troubleshooting and performance information, see the User Guide or online Help.

If you acquired Photoshop as part of an Adobe Creative Suite, you will find the Photoshop Goodies folder on one of your Content. If you acquired Photoshop as an Electronic Software Download (ESD), you will not have but the folder structure created on your hard drive after decompressing your download will contain a Goodies folder and other folders described in this document. Also certain instructions in this document may be slightly different for you, such as Serial Number informa-

tion. Please refer to your Creative Suite ReadMe, or the e-mail confirmation you received when you purchased the ESD version for the latest information.

Important: Please register your

certain instructions in this document may be slightly different for you, such as Serial Number information.

copy of Photoshop online at the end of the installation process, or by accessing the Registration item under the Help menu. You can also complete the registration card and mail it today. You must register to receive technical support and important product update information.

Your product may also require Ac-



certain instructions in this document may be slightly different for you, such as Serial Number information.

tivation within 30 days of installation. If your product requires Activation, you will find the Activation ReadMe.wri file in the same folder as this ReadMe file. Please read it for more information.

This file contains last-minute product information and troubleshooting tips. Please refer to the User Guide or the HowToInstall document for installation instructions. For further troubleshooting and performance information, see the User Guide or online Help.

If you acquired Photoshop as part of an Adobe Creative Suite, you will find the Photoshop Goodies folder on one of your Content. If you acquired Photoshop as an Electronic Software Download (ESD), you will not have but the folder structure created on your hard drive after decompressing your download will contain a Goodies folder and other folders described in this document. Also certain instructions in this document may be slightly different for you, such as Serial Number information. Please refer to your Creative Suite ReadMe, or the e-mail confirmation you received when you purchased the ESD version for the latest information.

Important: Please register your copy of Photoshop online at the end of the installation process, or by access-

ing the Registration item under the Help menu. You can also complete the registration card and mail it today. You must register to receive technical support and important product update information.

Your product may also require Activation within 30 days of installation. If your product requires Activation, you will find the Activation ReadMe.wri file in the same folder as this ReadMe file. Please read it for more information.

This file contains last-minute product information and troubleshooting tips. Please refer to the User Guide or the HowToInstall document for installation instructions. For further troubleshooting and performance information, see the User Guide or online Help.

If you acquired Photoshop as part of an Adobe Creative Suite, you will find the Photoshop Goodies folder on one of your Content. If you acquired Photoshop as an Electronic Software Download (ESD), you will not have but the folder structure created on your hard drive after decompressing your download will contain a Goodies folder and other folders described in this document. Also certain instructions in this document may be slightly different for you, such as Serial Number information. Please refer to your Creative Suite ReadMe, or the e-mail confirmation you received when you purchased the ESD version for the latest information.

Important: Please register your

copy of Photoshop online at the end of the installation process, or by accessing the Registration item under the Help menu. You can also complete the registration card and mail it today. You must register to receive technical support and important product update information.

Your product may also require Ac-



tivation within 30 days of installation. If your product requires Activation, you will find the Activation ReadMe.wri file in the same folder as this ReadMe file. Please read it for more information.

If you acquired Photoshop as an Electronic Software Download (ESD), you will not have but the folder structure.



Political

THE DECISION OF

HIGH COME



This file contains last-minute product information and troubleshooting tips. Please refer to the User Guide or the HowToInstall document for installation instructions. For further troubleshooting and performance information, see the User Guide or online Help.

If you acquired Photoshop as part of an Adobe Creative Suite, you will find the Photoshop Goodies folder on one of your Content. If you acquired Photoshop as an Electronic Software Download (ESD), you will not have but the folder struc-

*A*ctivation within 30 days of installation. If your product requires Activation, you will find the Activation ReadMe.wri file in the same folder as this ReadMe file. Please read it for more information.



Political

the Photoshop Goodies folder on one of your Content. If you acquired Photoshop as an Electronic Software Download (ESD), you will not have but the folder structure created on your hard drive after decompressing your download will contain a Goodies folder and other folders described in this document. Also certain instructions in this document may be slightly different for you, such as Serial Number information. Please refer to your Creative Suite ReadMe, or the e-mail confirmation you received when you purchased the ESD version for the latest information.

Important: Please register your copy of Photoshop online at the end of the installation process, or by accessing the Registration item under the Help menu. You can also complete the registration card and mail it today. You must register to receive technical support and important product update information.

Your product may also require Activation within 30 days of installation. If your product requires Activation, you will find the Activation ReadMe.wri file in the same folder as this ReadMe file. Please read it for more information.

This file contains last-minute product information and troubleshooting tips. Please refer to the User Guide or the HowToInstall document for installation instructions. For further trouble-

ture created on your hard drive after decompressing your download will contain a Goodies folder and other folders described in this document. Also certain instructions in this document may be slightly different for you, such as Serial Number information. Please refer to your Creative Suite ReadMe, or the e-mail confirmation you received when you purchased the ESD version for the latest information.

If you acquired Photoshop as part of an Adobe Creative Suite, you will find

Political

shooting and performance information, see the User Guide or online Help.

If you acquired Photoshop as part of an Adobe Creative Suite, you will find the Photoshop Goodies folder on one of your Content. If you acquired Photoshop as an Electronic Software Download (ESD), you will not have but the folder structure created on your hard drive after decompressing your download will contain a Goodies folder and other folders described in this

menu. You can also complete the registration card and mail it today. You must register to receive technical support and important product update information.

Your product may also require Activation within 30 days of installation. If your product requires Activation, you will find the Activation ReadMe.wri file in the same folder as this ReadMe file. Please read it for more information.

This file contains last-minute prod-



document. Also certain instructions in this document may be slightly different for you, such as Serial Number information. Please refer to your Creative Suite ReadMe, or the e-mail confirmation you received when you purchased the ESD version for the latest information.

Important: Please register your copy of Photoshop online at the end of the installation process, or by accessing the Registration item under the Help

uct information and troubleshooting tips. Please refer to the User Guide or the HowToInstall document for installation instructions. For further troubleshooting and performance information, see the User Guide or online Help.

If you acquired Photoshop as part of an Adobe Creative Suite, you will find the Photoshop Goodies folder on one of your Content. If you acquired Photoshop as an Electronic Software Download (ESD), you

Political

will not have but the folder structure created on your hard drive after decompressing your download will contain a Goodies folder and other folders described in this document. Also certain instructions in this document may be slightly different for you, such as Serial Number information. Please refer to your Creative Suite ReadMe, or the e-mail confirmation you received when you purchased the ESD version for the latest information.

find the Activation ReadMe.wri file in the same folder as this ReadMe file. Please read it for more information.

If you acquired Photoshop as an Electronic Software Download (ESD), you will not have but the folder structure.

Important: Please register your copy of Photoshop online at the end of the installation process, or by accessing the Registration item under the Help menu. You can also complete the regis-



“ Your product may also require Activation within 30 days of installation. If your product requires Activation, you will find the Activation ReadMe.wri file in the same folder as this ReadMe file. Your product may also require Activation within 30 days of installation. If your product requires Activation, you will find the Activation ReadMe. ”

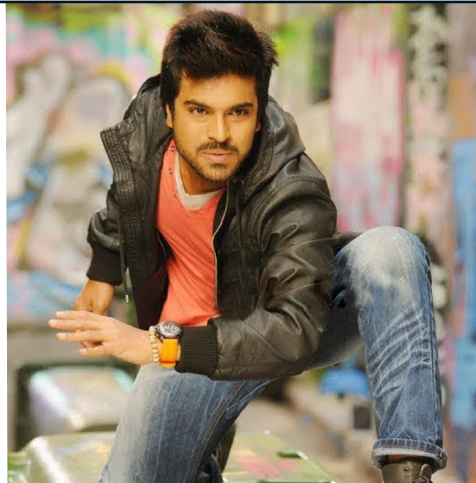
Important: Please register your copy of Photoshop online at the end of the installation process, or by accessing the Registration item under the Help menu. You can also complete the registration card and mail it today. You must register to receive technical support and important product update information.

Your product may also require Activation within 30 days of installation. If your product requires Activation, you will

tration card and mail it today. You must register to receive technical support and important product update information.

Your product may also require Activation within 30 days of installation. If your product requires Activation, you will find the Activation ReadMe.wri file in the same folder as this ReadMe file.

Box Office



Box Office

*R*ectivation within 30 days of installation. If your product requires Activation, you will find the Activation ReadMe.wri file in the same folder as this ReadMe file. Please read it for more information.

This file contains last-minute product information and troubleshooting tips. Please refer to the User Guide or the HowToInstall document for installation instructions. For further troubleshooting and performance information, see the User Guide or online Help.

If you acquired Photoshop as part of an Adobe Creative Suite, you will find the Photoshop Goodies folder on one of your Content. If you acquired Photoshop as an Electronic Software Download (ESD), you will not have but the folder

HARAN'S
ANZA



Box Office

structure created on your hard drive after decompressing your download will contain a Goodies folder and other folders described in this document. Also certain instructions in this document may be slightly different for you, such as Serial Number information. Please refer to your Creative Suite ReadMe, or the e-mail confirmation you received when you purchased the ESD version for the latest information.

If you acquired Photoshop as part of an Adobe Creative Suite, you will find the Photoshop Goodies folder on one of your Content. If you acquired Photoshop as an Electronic Software Download (ESD), you will not have but the folder structure created on your hard drive after decompressing your download will contain a Goodies folder and other folders described in this document. Also certain instructions in this document may be slightly different for you, such as Serial Number information. Please refer to your Creative Suite ReadMe, or the e-mail confirmation you received when you purchased the ESD version for the latest information.

Important: Please register your copy of Photoshop online at the end of the installation process, or by accessing the Registration item under the Help menu. You can also complete



RAGALAHARI RAGALAHARI RAGALAHARI RAGALAHARI

Box Office

the registration card and mail it today. You must register to receive technical support and important product update information.

Your product may also require Activation within 30 days of installation. If your product requires Activation, you will find the Activation ReadMe.wri file in the same folder as this ReadMe file. Please read it for more information.

Your product may also require Activation within 30 days of installation. If your product requires Activation, you will find the Activation ReadMe.wri file in the same folder as this ReadMe file. Your product may also require Activation within 30 days of installation. If your product requires Activation, you will find the Activation ReadMe. Your product may also require Activation within 30 days of installation.

ing your download will contain a Goodies folder and other folders described in this document. Also certain instructions in this document may be slightly different for you, such as Serial Number information. Please refer to your Creative Suite ReadMe, or the e-mail confirmation you received when you purchased the ESD version for the latest information.

Important: Please register your



This file contains last-minute product information and troubleshooting tips. Please refer to the User Guide or the HowToInstall document for installation instructions. For further troubleshooting and performance information, see the User Guide or online Help.

If you acquired Photoshop as part of an Adobe Creative Suite, you will find the Photoshop Goodies folder on one of your Content. If you acquired Photoshop as an Electronic Software Download (ESD), you will not have but the folder structure created on your hard drive after decompress-

copy of Photoshop online at the end of the installation process, or by accessing the Registration item under the Help menu. You can also complete the registration card and mail it today. You must register to receive technical support and important product update information.

Your product may also require Activation within 30 days of installation. If your product requires Activation, you will find the Activation ReadMe.wri file in the same folder as this ReadMe file. Please read it for more information.



Box Office





Samantha photoshoot

TARUN



Activation within 30 days of installation. If your product requires Activation, you will find the Activation ReadMe.wri file in the same folder as this ReadMe file. Please read it for more information.

This file contains last-minute prod-

Box Office

uct information and troubleshooting tips. Please refer to the User Guide or the HowToInstall document for installation instructions. For further troubleshooting and performance information, see the User Guide or online Help.

If you acquired Photoshop as part of an Adobe Creative Suite, you will find the Photoshop Goodies folder on one of your Content. If you acquired Photoshop as an Electronic Software Download (ESD), you will not have but the folder structure created on your hard drive after decompress-

ing your download will contain a Goodies folder and other folders described in this document. Also certain instructions in this document may be slightly different for you, such as Serial Number information. Please refer to your Creative Suite ReadMe, or the e-mail confirmation you received when you purchased the ESD version for the latest information.

If you acquired Photoshop as part of an Adobe Creative Suite, you will find the Photoshop Goodies folder on one of your Content. If you acquired Photoshop as an



Box Office

Electronic Software Download (ESD), you will not have but the folder structure created on your hard drive after decompressing your download will contain a Goodies folder and other folders described in this document. Also certain instructions in this document may be slightly different for you, such as Serial Number information. Please refer to your Creative Suite ReadMe, or the e-mail confirmation you received when you purchased the ESD version for the latest information.

Important: Please register your copy of Photoshop online at the end of the in-

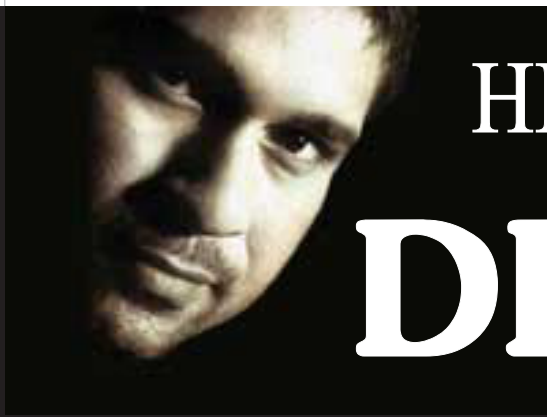
stallation process, or by accessing the Registration item under the Help menu. You can also complete the registration card and mail it today. You must register to receive technical support and important product update information.

Your product may also require Activation within 30 days of installation. If your product requires Activation, you will find the Activation ReadMe.wri file in the same folder as this ReadMe file. Please read it for more information.



“ Also certain instructions in this document may be slightly different for you, such as Serial Number information. Please refer to your Creative Suite ReadMe, or the e-mail confirmation you received when you purchased the ESD version for the latest information. ”





HERO OF THE DECADE

Activation within 30 days of installation. If your product requires Activation, you will find the Activation ReadMe.wri file in the same folder as this ReadMe file. Please read it for more information.

This file contains last-minute product information and troubleshooting tips. Please refer to the User Guide or the

HowToInstall document for installation instructions. For further troubleshooting and performance information, see the User Guide or online Help.

If you acquired Photoshop as part of an Adobe Creative Suite, you will find the Photoshop Goodies folder on one of your Content. If you acquired Photoshop as an Electronic Software Download (ESD), you will not have but the folder structure created on your hard drive after decompressing your download will contain a Goodies folder and other folders described in this

Sports



Sports

document. Also certain instructions in this document may be slightly different for you, such as Serial Number information. Please refer to your Creative Suite ReadMe, or the e-mail confirmation you received when you purchased the ESD version for the latest information.

If you acquired Photoshop as part of an Adobe Creative Suite, you will find the Photoshop Goodies folder on one of your Content. If you acquired Photoshop as an



Electronic Software Download (ESD), you will not have but the folder structure created on your hard drive after decompressing your download will contain a Goodies folder and other folders described in this document. Also certain instructions in this document may be slightly different for you, such as Serial Number informa-

tion. Please refer to your Creative Suite ReadMe, or the e-mail confirmation you received when you purchased the ESD version for the latest information.

Important: Please register your copy of Photoshop online at the end of the installation process, or by accessing the Registration item under the Help

menu. You can also complete the registration card and mail it today. You must register to receive technical support and im-

portant product update information.

Your product may also require Activation within 30 days of installation. If your product requires Activation, you will find the Activation ReadMe.wri file in the same folder as this ReadMe file. Please read it for more information.



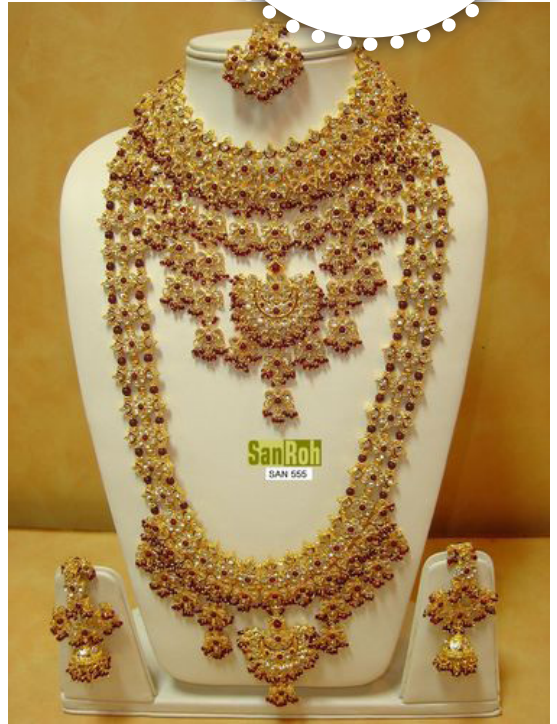


Shopping

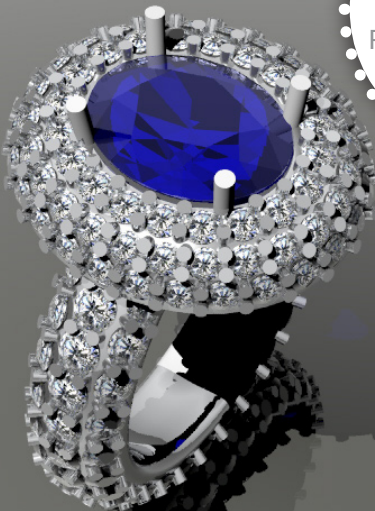


BRAND: SONATA
PRICE: **12,000/-**

BRAND: LAXMI
PRICE: **30,000/-**



BRAND: PUNNA
PRICE: **50,000/-**



BRAND: SONY
PRICE: **60,000/-**



Shopping



BRAND: LAXMI
PRICE: **1,00,000/-**



BRAND: SONATA
PRICE: **35,000/-**



BRAND: SONATA
PRICE: **35,000/-**



BRAND: SONATA
PRICE: **60,000/-**



BRAND: SONATA
PRICE: **40,000/-**



HEAD OFFICE: MUMBAI - GROUND FLOOR, RAHUL MANDIR MANSION, 8-22, MUMBAI - 400013.
TEL: +91 9885012345

BANGALORE - GROUND FLOOR, RAHUL MANDIR MANSION, 8-22, BANGALORE - 400016.
TEL: +91 9885012345

KOLKATA - GROUND FLOOR, RAHUL MANDIR MANSION, 8-22, KOLKOTA - 400015.
TEL: +91 9885012345