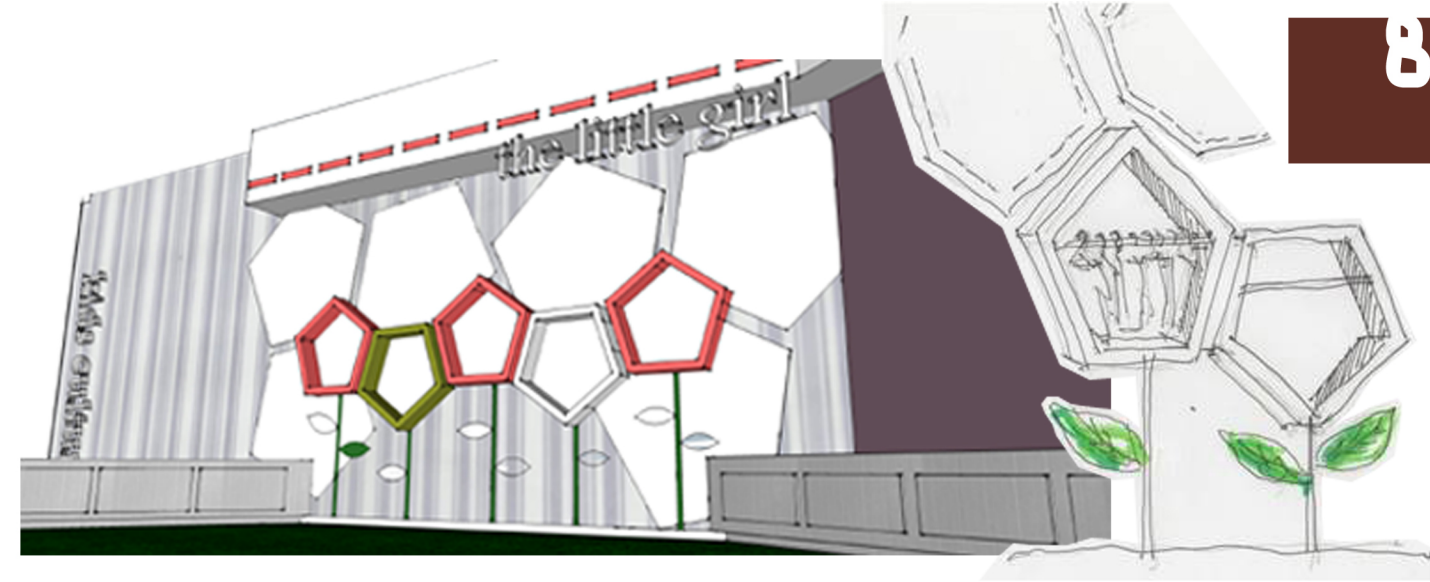
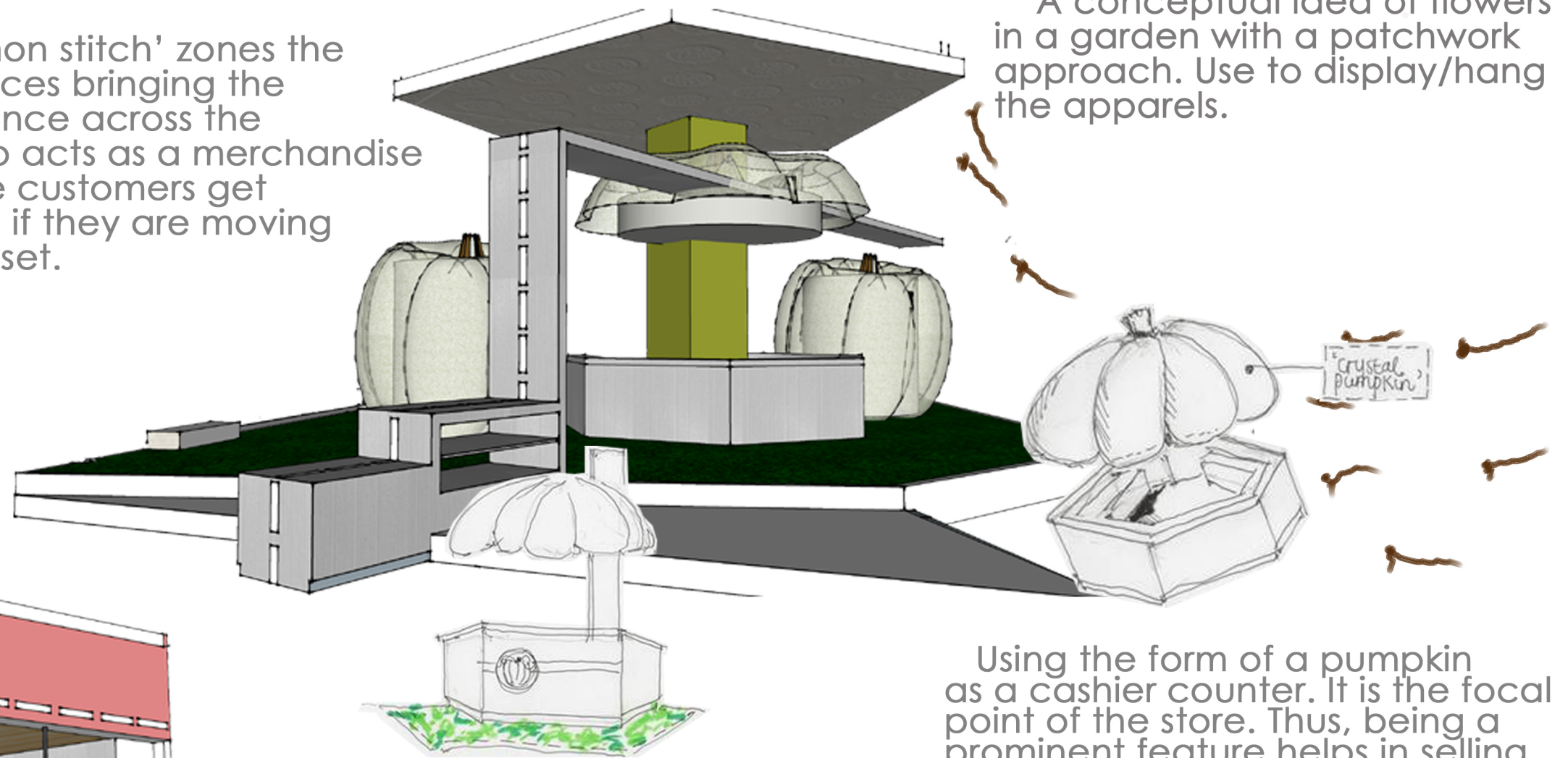
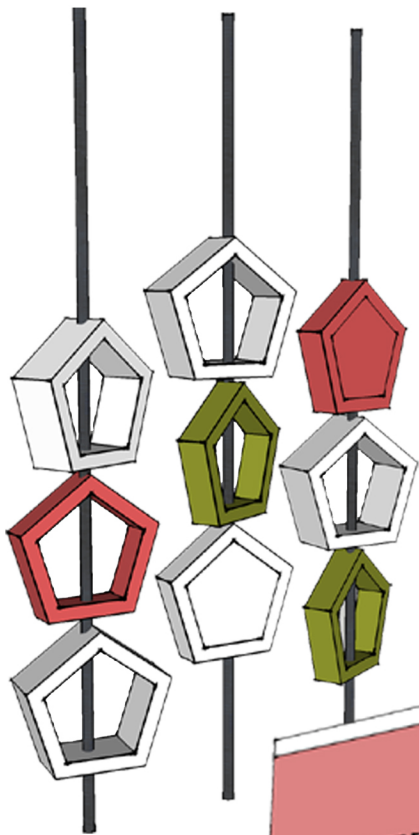


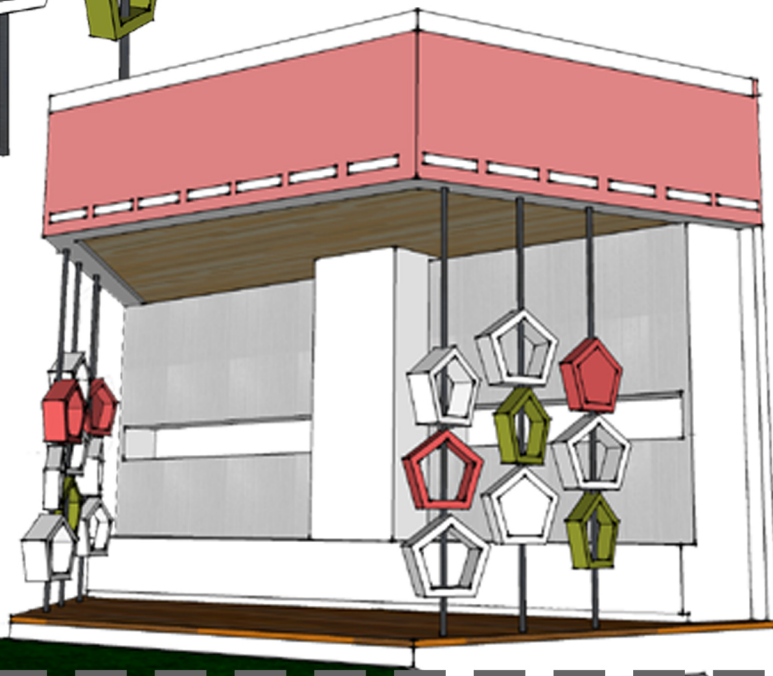
The 'common stitch' zones the adjacent spaces bringing the visual experience across the store and also acts as a merchandise display where customers get interactive as if they are moving through a closet.



A conceptual idea of flowers in a garden with a patchwork approach. Use to display/hang the apparels.



Using the form of a pumpkin as a cashier counter. It is the focal point of the store. Thus, being a prominent feature helps in selling of the brand and image of the company.



A rotatable vertical element that serves as a foot wear compartment. This allow room for interaction and the convenience of whichever direction.

*visual merchandise display..*