

Team 7654

PHASE 1

- Redevelopment of the triangle of land including the bus transit center and the site of the former Levee/Amazon site.
- Construct monumental pedestrian and bike gateway from MLK Baker Station to The Infield.
- Donate land to City of Seattle for development of "The Infield" - a multi-purpose public square.
- Continue leasing of non-developed retail space providing NDC for development.
- Co-develop with public sector partners several civic amenities including co-located library, community center, and community college location.
- Develop and build:
 - 150 key boutique hotel
 - 256 unit apartment complex
 - 71 condo units
 - 2 story urban focused Target
 - 76,000 s.f. retail space
 - 10 screen Cinema

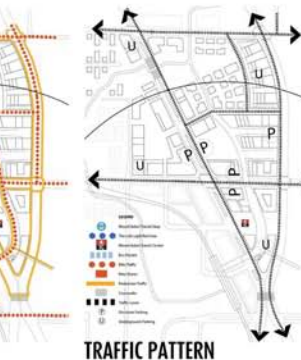
PHASE 2

- Demolition of current CVS/QFC building and delivery of child care center, senior living center, and additional for sale and rental housing.
- Develop and build:
 - 191 condo and townhome units
 - 104 unit senior living center
 - 2 story urban focused Lanes
 - 19,200 s.f. retail space
 - 96,000 s.f. Class A office space

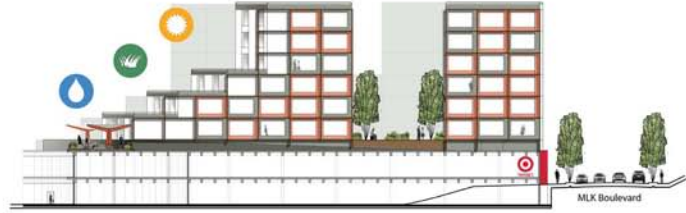
PHASE 3

- Delivery of for sale townhomes and condos.
- Donate land to City of Seattle for development of "The Outfield" - a 2-acre ecological park.
- Delivery of a multi-use, flex space for public/commercial/research use.
- Develop and build:
 - 146 unit apartment complex
 - 151 condo and townhome units
 - 71,200 s.f. Class A office space
 - 59,188 s.f. flex space

Phase	1	2	3	Total
Residential (units)	327	295	297	919
Office/retail (s.f.)	303,881	226,030	148,568	761,164
Parking (spaces)	1,574	961	818	3,353
Civic (s.f.)	47,296	0	58,188	105,484
Affordable housing (units)	85	31	32	98
Affordable hotel (units)	18	3	9	29
Open space (s.f.)	88,152	113,198	24,128	205,478



SECTION 1... McCLELLAN BRIDGE
East-West Looking South



SECTION 2... TARGET
West-East Looking North



PERSPECTIVE 2... "THE INFIELD"



SECTION 3... "THE OUTFIELD"
East-West Looking South



PERSPECTIVE 3... "THE OUTFIELD"

Team 7654