

**廊** Corridor

people love to watch people, the corridor at different levels are not only a connection between functions, but opportunities of launching the visual contact between people.

**间** Unit

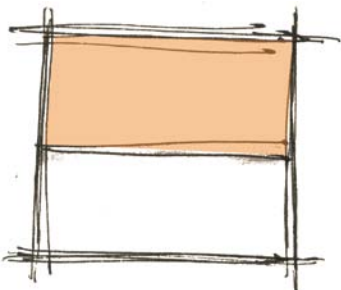
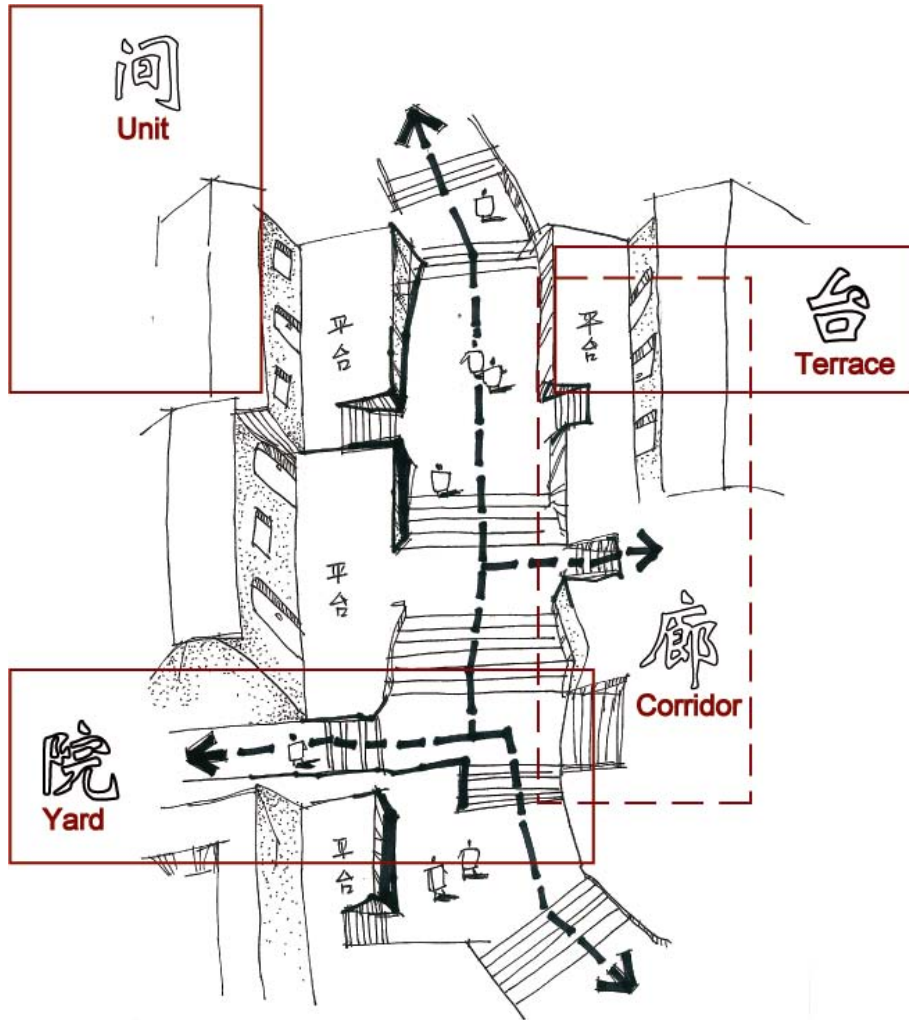
As hotel room, it provides its residents the space with privacy, and also the balcony attached as a transitional space between private and public.

**院** Yard

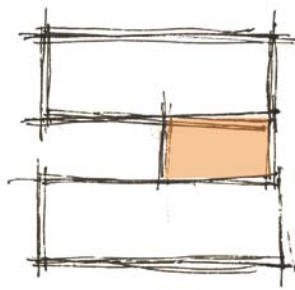
It is always the ideal space to launch some small-scale social activities. The central yard surrounded by hotel rooms can be a social space, as well as a visual focus for people at upstairs

**台** Terrace

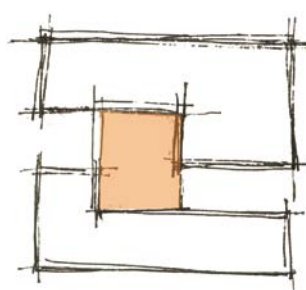
It is a connecting point to the movement from top floor to the bottom floor. Meanwhile, a widened terrace can also be a great social space for communication and multi-angle views.



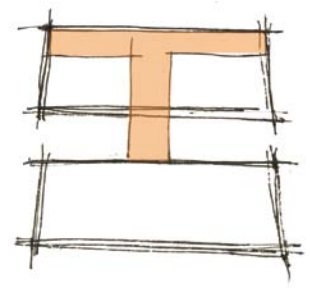
间/Unit



台/Terrace



院/Yard



廊/Corridor