

# TEAM AKIRA ORAL PRESENTATION

SOLICITATION #: YA 1323-15-MS-0004

JULY 21, 2015

MULTI-TIERED ACQUISITION FRAMEWORK FOR SYSTEMS  
ENGINEERING & INTEGRATION PROGRAM TIER

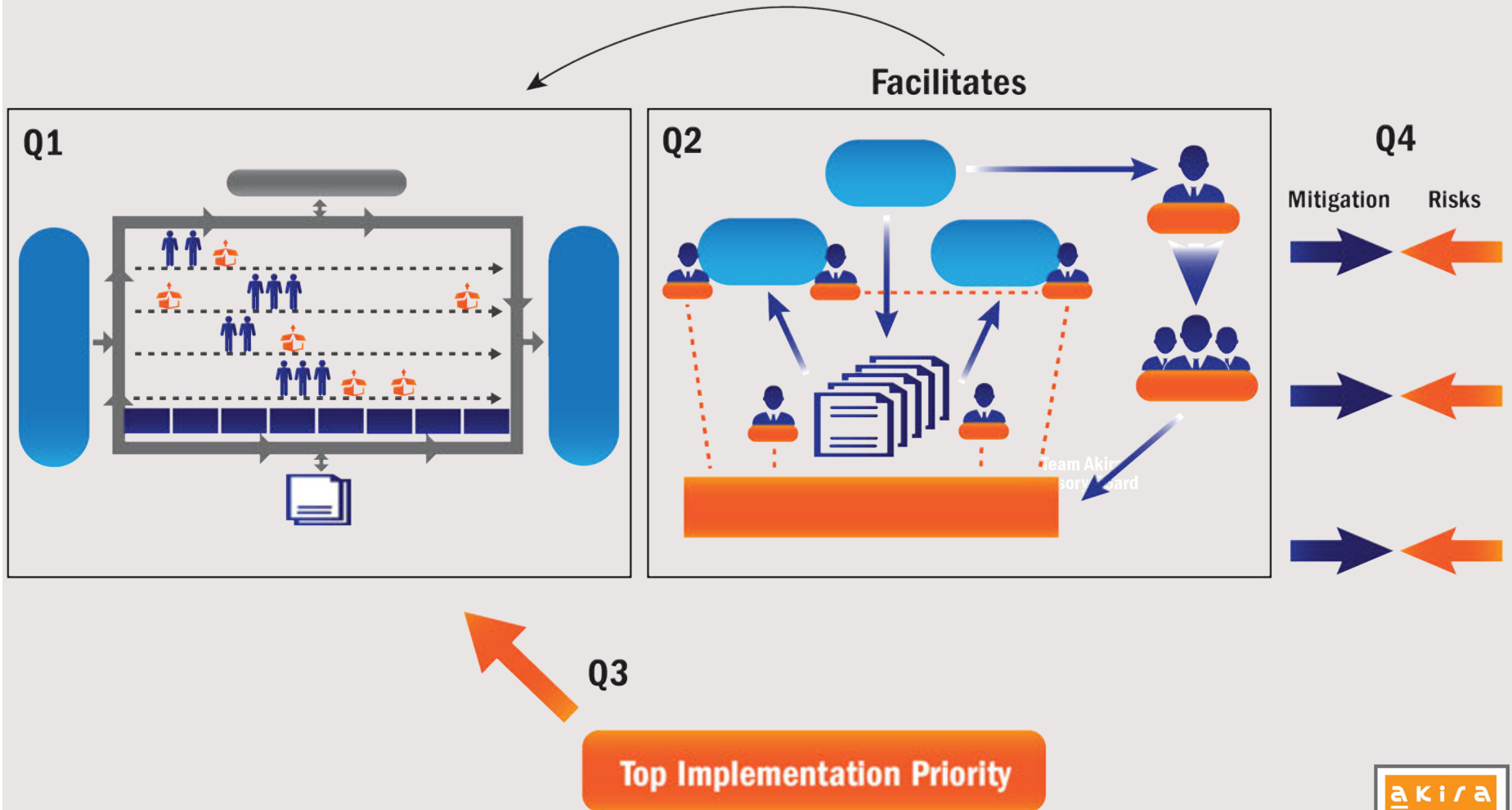
PHASE TWO RESPONSE



# INTRODUCTION

- Srinivas Chennamaraja, Akira
- David Wood, Akira
- Steven Nesbit, PORTAL Technologies
- Logan Chellaperumal, Cyber Innovations
- Latif Khalil, JBS International

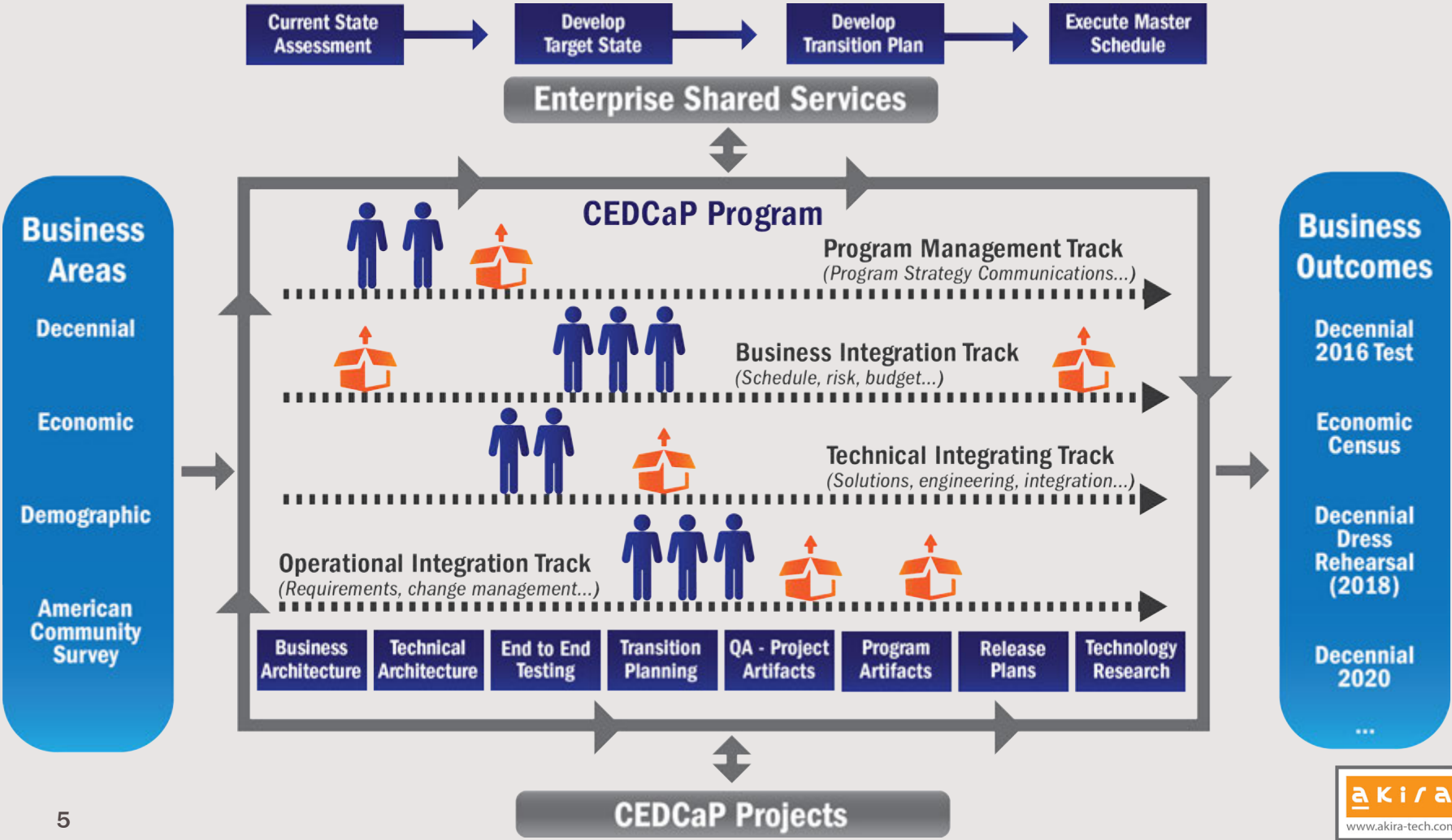
# OVERVIEW



# QUESTION 1: FUNCTIONAL & PRAGMATIC STRATEGY

*Considering many CEDCaP projects were initiated and consequently began development work on custom software solutions prior to the launch of the CEDCaP Program, please propose a functional and pragmatic implementation strategy and framework for delivering an ecosystem of adaptable, secure, resilient, loosely coupled, service-oriented interoperable solutions that meet or exceed the performance requirements defined in workload demand models and service-level agreements (SLAs). For the purposes of this proposal, assume these solutions are a combination of commercial off-the-shelf software (COTS), open source software (OSS), and in-house custom-developed software systems that leverage the Bureau's middleware environment and on-premise, hybrid, and public cloud infrastructures.*

# PROPOSED IMPLEMENTATION STRATEGY AND FRAMEWORK

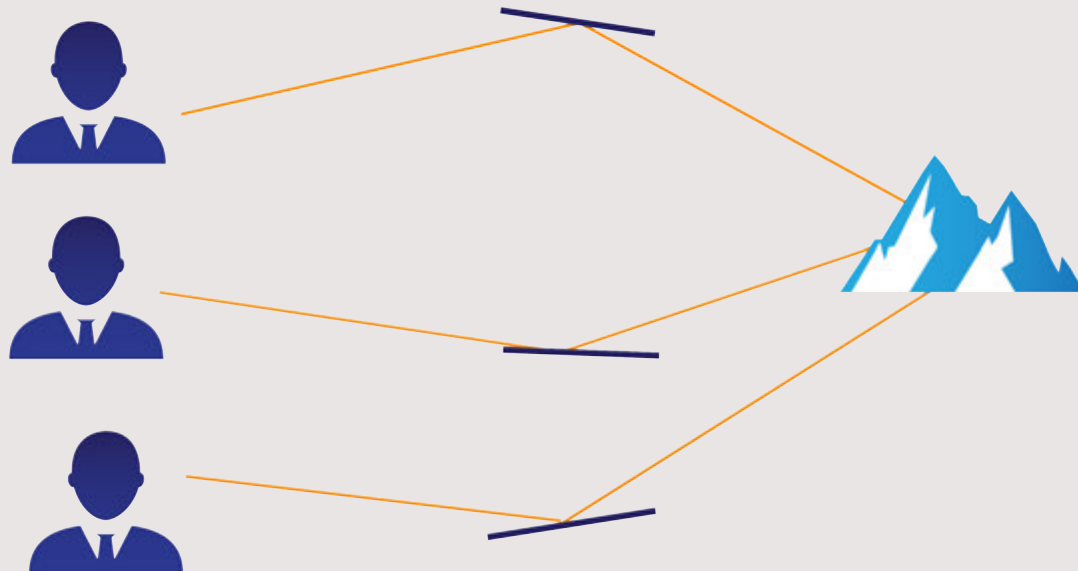


## QUESTION 2: ENGAGEMENT STRATEGY W/ GOV'T – CEDCAP & SERVICE DELIVERY PARTNERS

- *In the context of your proposal above, please address your engagement strategy in collaborating with the government, the CEDCaP Program Management Office (PgMO), and the program's multiple service delivery partners, substantiated by real world examples of your role on integration teams tasked with similar challenges, and discuss how your prior experience has prepared you to deliver the above successfully.*

# DISCIPLINED ALIGNMENT FOCUS

- Commitment to scope discipline as a function of customer vision alignment
- Strong partner for customer change management discipline
- Focus on alignment with customer priorities
- Proactively engage and seek clarification for customer expectations



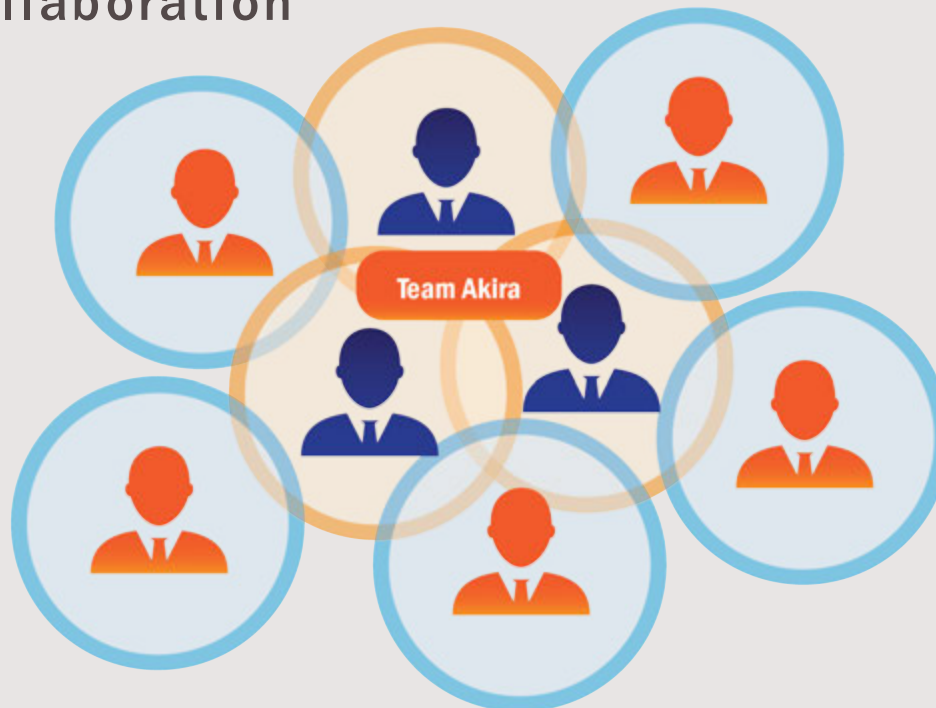
# COMMITMENT TO PARTNERSHIP

- Continuously assess and adapt
- Commitment to responsiveness and flexibility as a service provider
- Customer mission oriented approach

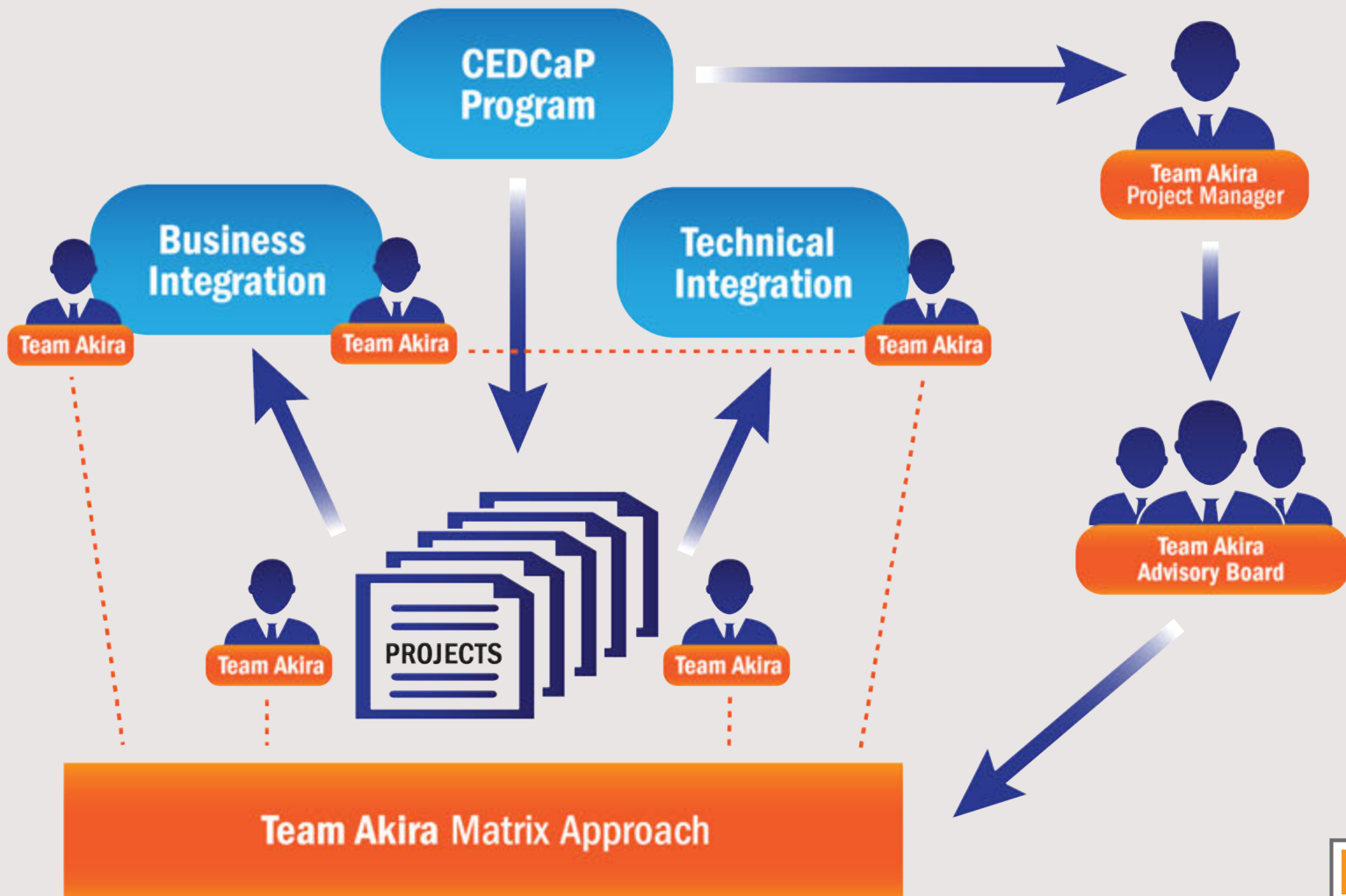


# INTEGRATION CENTRIC APPROACH

- Emphasis on collaboration in every aspect of execution
- Organize our external engagement with customers to optimize collaboration
- Organize our internal vendor management approach to optimize collaboration



# TEAM AKIRA MATRIX MODEL



# TEAM AKIRA CONCEPT

- Emphasis on value-added, not role or organization
- Institutionalization of collaboration via Advisory Board
- Collaboration first, tasking second - oriented approach
- Partner empowerment to optimize service delivery

# ADVISORY BOARD



David Wood



Robert Warren



Latif Khalil



David Kane



Steven Nesbit



Logan Chellaperumal



# RELEVANT EXPERIENCE

## Past Performance

- FDA ORA Business IT Support
- USCB: CEDCaP, ASDI, Decennial
- IRS: CADE 2, AMS
- VA: VLER
- NIH/FDA: Federal Safety Reporting Portal

## Relevance

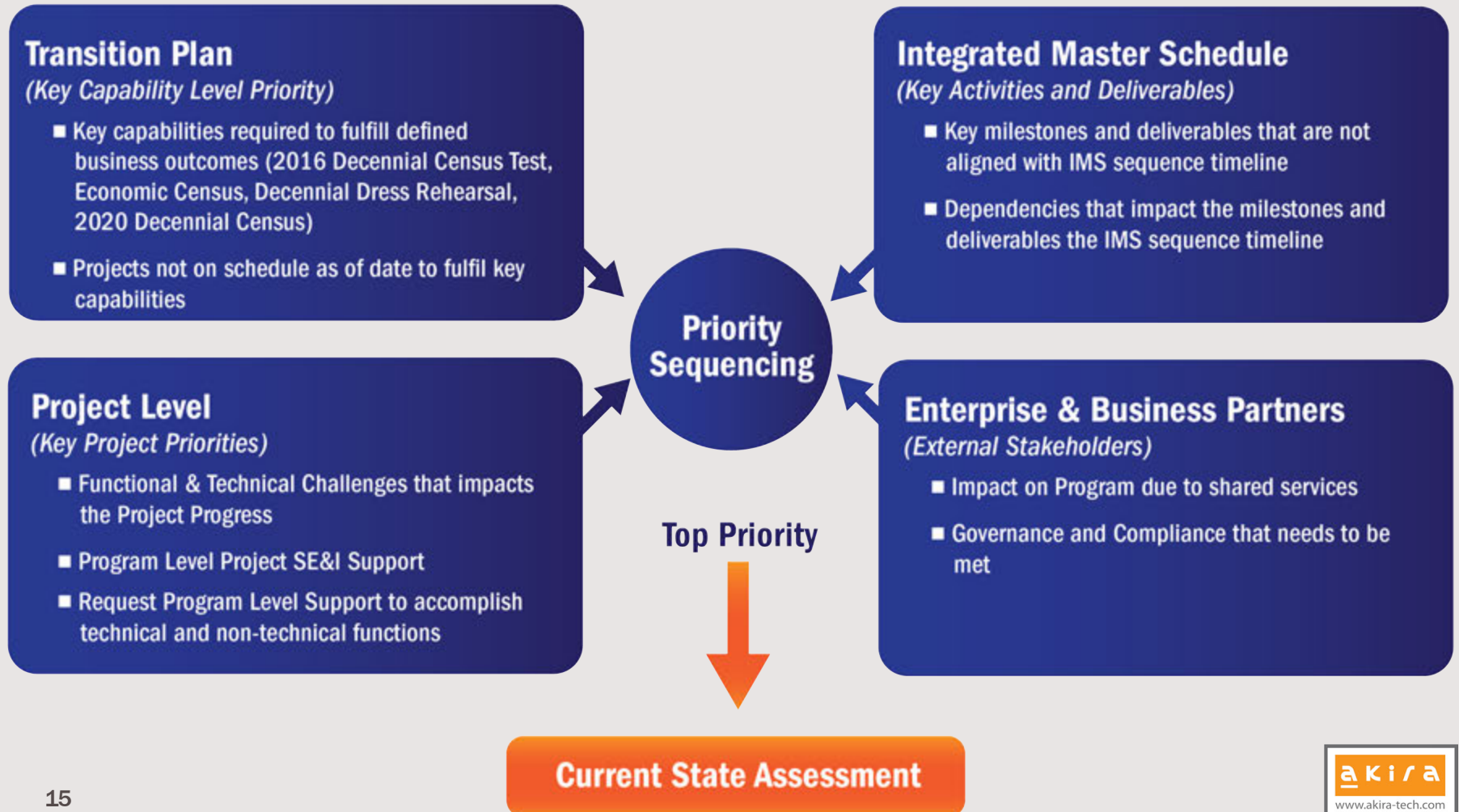
- Various project level artifacts for multiple FDA ORA programs.
- Quality Assurance of artifacts: Business Proposals, Project Charters, CONOPS, PMP, Solution Architecture, SDD,SEMP, TEMP, Risk Management Plan, etc.
- Program architecture, engineering, and integration
- Program level project guidance
- Release Plan for MARCS, ALM, RBIS
- Research on Case Management Systems, Laboratory Information Systems (LIMS), Business Rule Engines (BRE)
- Conducted elicitation from 100s of subject matter experts to develop integrated business processes
- Creation of Business Architecture from multiple stakeholders
- Service Oriented Architecture
- Preparing the test data
- Availability, Performance & Scalability with Guaranteed Service delivery across systems
- Transition from a legacy DOD-VA interface (BHIE) to a service oriented architecture (SOA)

# QUESTION 3: TOP PRIORITY SE&I FRAMEWORK

*In addition, please address the following related questions:*

*What would be your top priority in implementing the SE&I framework? How would you determine such priority?*

# BUSINESS DRIVEN PRIORITY APPROACH



# QUESTION 4: IMMEDIATE RISK & HOW TO MITIGATE

*From the introductory information provided above, what immediate risks do you identify, and how would you mitigate such risks?*

# RISKS AND MITIGATIONS

Risk	Mitigation
<p>If the pace of resource skill transition lags behind program execution needs, then the program critical path may be effected. For example, USCB transformation efforts represent a paradigm shift from traditional software to metadata and requirements driven development.</p>	<p>It will be necessary to support critical skills enhancement to bridge any gaps during the initial phases during program execution until necessary skill proficiency has been achieved.</p>
<p>If mission enabling systems (MES) are not delivered on a timely basis, then redundancies will continue to exist and benefits will not be realized.</p>	<p>The program will engage closely with MES projects to provide timely support necessary to help ensure program level critical path execution.</p>
<p>If effective coordination, at the program level, for system integration testing is not conducted, then the unavailability of dependent systems may adversely effect t he delivery of incremental capabilities.</p>	<p>Contingency activity is to create test harnesses for the inputs outputs and interfaces along with any required test data</p>
<p>If organizational change management efforts are not effective, then the value of new capabilities will not be fully realized.</p>	<p>Collaboration engagement strategy to understand stakeholder concerns and resolve them to support delivery of incremental capability.</p>
<p>If legacy systems are not retired on schedule, then the CEDCaP Program will not fully realize targeted benefits.</p>	<p>Continuously conduct stakeholder engagement activities and formally conduct retirement/disposition in a disciplined manner.</p>

# WHY TEAM AKIRA!

- **Significant current Census experience**
  - Specific CEDCAP program experience
- **Leverage program management experience similar to size, scope, and complexity of CEDCaP program**
- **World renowned Systems Engineering & Integration teaming partner**
- **Bring an integrated team culture of partnership**